

Converting Colors

HunterLab(77.4023, 25.0041,
-10.5791)

Have a look what the booklet for
HunterLab(77.4023, 25.0041,
-10.5791) contains.

HunterLab(77.4187, 24.9223, -10.3255)	3
<i>Conversions</i>	4
<i>Details</i>	6
<i>Harmonies</i>	12
<i>Previews</i>	24
<i>Color Blindness Simulation</i>	28
<i>CSS Examples</i>	31

Color

**HunterLab(77.4187, 24.9223,
-10.3255)**

Conversions

Conversions Part 1

Format	Color
Hex	F5B9E8
RGB	245, 185, 232
RGB Percent	96%, 73%, 91%
CMY	0.0392, 0.2745, 0.0902
CMYK	0.00, 0.24, 0.05, 0.04
HSL	313°, 75%, 84%
HSV	313°, 24%, 96%
XYZ	69.5706, 59.9366, 84.2460
YIQ	208.2980, 20.6730, 27.3370

Conversions

Conversions Part 2

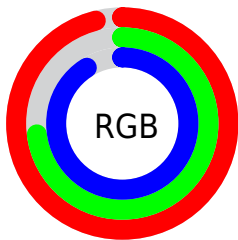
Format	Color
R _Y B	245, 185, 232
Decimal	16103912
CIE _{Lab}	81.81, 29.04, -14.98
CIE _{LCh}	82, 32.674, 332.712
Yxy	59.9392, 0.3255, 0.2804
Android (android.graphics.Color)	4294293992 (0xFFFF5B9E8)
YUV	208.2980, 11.6851, 32.1877
Hunter-Lab	77.4187, 24.9223, -10.3255

Details

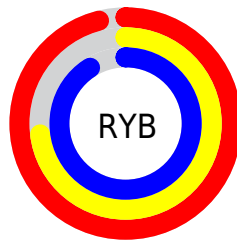
The HunterLab color $77.4187, 24.9223, -10.3255$ is a light color, and the websafe version is hex FFCCFF . A complement of this color would be $89.2737, -30.5517, 18.9907$, and the grayscale version is $79.4948, -4.2416, 4.3191$.

A 20% lighter version of the original color is $95.5984, 2.1411, 0.2692$, and $54.8257, 23.5153, -10.2239$ is the 20% darker color. If you saturate the color by 10%, you get $70.8936, 37.4264, -16.2526$, and if you desaturate by 10%, it is $84.4954, 12.5018, -4.1025$.

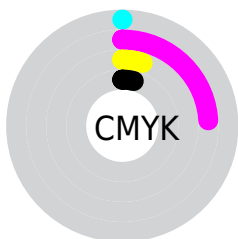
Distribution



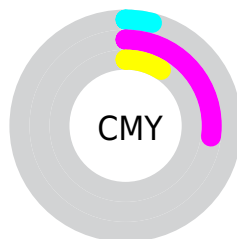
- Red (96%)
- Green (73%)
- Blue (91%)



- Red (96%)
- Yellow (73%)
- Blue (91%)



- Cyan (0%)
- Magenta (24%)
- Yellow (5%)
- Black (4%)



- Cyan (4%)
- Magenta (27%)
- Yellow (9%)

Brightness & Saturation Gradients

These gradients show how the HunterLab color 77.4187, 24.9223, -10.3255 changes by changing the brightness by 10 percent. The first figure shows a shift by +10% for each color and the second figure -10%.

Similar to the brightness gradients but the following saturation gradients show a change of the HunterLab color 77.4187, 24.9223, -10.3255 by changing the saturation by 10% instead.

77.4187, 24.9223,
-10.3255

77.4187, 24.9223,
-10.3255

206.0033, 27.9741,
-8.1111

65.8556, 24.2237,
-10.3258

102.3433, 26.0584,
-10.1521

54.9320, 23.4315,
-10.2660

115.6473, 26.5146,
-9.9897

44.6896, 22.5324,
-10.1396

129.4825, 26.9031,
-9.7803

35.1773, 21.5141,
-9.9414

143.8293, 27.2286,
-9.5266

26.4560, 20.3628,
-9.6671

158.6700, 27.4951,
-9.2308

18.6054, 19.0670,
-9.3174

173.9886, 27.7061,

11.7355, 17.6349,

-8.8952

-8.9135

189.7708, 27.8649,
-8.5214

4.4703, 28.1180,
-14.0754

0.0000, NaN, -NF

77.4187, 24.9223,
-10.3255

77.4187, 24.9223,
-10.3255

70.8936, 37.4264,
-16.2526

84.4954, 12.5018,
-4.1025

65.0103, 49.7773,
-21.7015

92.0379, 0.2957,
2.2892

59.8781, 61.5582,
-26.4035

98.8461, -9.8257,
7.5036

55.6069, 72.1574,
-30.0179

99.0150, -8.8936,
5.0931

■ 52.2905, 80.8163,
-32.1813

■ 99.0720, -8.5789,
4.2792

■ 49.9763, 86.8135,
-32.6199

■ 48.6276, 89.7734,
-31.2985

■ 48.1815, 90.4029,
-30.0327

Harmonies

Analogous

The Analogous color harmony consists of three colors that are next to each other on the color wheel.



77.4204, 13.0709, -24.4329



77.4187, 24.9223, -10.3255



77.4204, 28.7948, 5.5763

Triad

The Triadic color harmony groups three colors that are evenly spaced from another and form a triangle on the color wheel.



77.4204, 24.9199, -10.3238



77.4204, -5.5749, 27.9803



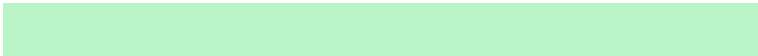
77.4204, -28.1931, -13.1881

Complementary

The Complementary color scheme is a pair of colors which are on the opposite of each other on the color wheel.



77.4187, 24.9223, -10.3255



89.2737, -30.5517, 18.9907

Split Complementary

Split-complementary colors differ from the complementary color scheme. The scheme consists of three colors, the original color and two neighbors of the complement color.



77.4204, -32.3413, 2.8269



77.4187, 24.9223, -10.3255



77.4204, -19.9585, 24.8906

Square

The Square scheme is like the rectangle color scheme, but the four colors are evenly spaced on the color wheel.



77.4204, 24.9199, -10.3238



77.4204, 10.3704, 25.8431



77.4204, -29.4509, 16.3858



77.4204, -17.6455, -26.3071

Rectangle

The Rectangle color scheme consists of four colors that form a rectangle on the color wheel.



77.4187, 24.9223, -10.3255



77.4204, 26.1002, 14.6133



77.4204, -29.4509, 16.3858



77.4204, -30.3419, -7.8633

Sweetspot

The Sweet Spot groups the original color and five complimentary colors.



77.4204, 24.9199, -10.3238



94.2808, 3.5127, 0.6935



73.0064, 11.9009, -24.9623



43.3949, 1.9810, 0.1328

0.0000, NaN, NaN



46.2646, -2.4686, 2.5136

Same Dimension

The Same Dimension uses a secret algorithm to generate beautiful new colors.



77.4204, 24.9199, -10.3238



77.8195, 32.0652, -13.6897



76.4051, 19.7065, 4.0630



40.8696, 2.9489, -0.4266



35.3941, 66.4605, -22.4537



10.5638, 19.9537, -7.6145

Inverse Universe

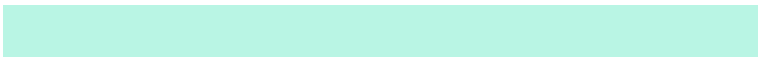
The Inverse Universe completely reimagines the original color for something new.



77.4204, 24.9199, -10.3238



77.8195, 32.0652, -13.6897



90.1233, -25.6765, 6.7955



40.8696, 2.9489, -0.4266



35.3941, 66.4605, -22.4537



10.5638, 19.9537, -7.6145

Previews

White Background



This preview shows how the HunterLab color 77.4187, 24.9223, -10.3255 looks on a white background.

Color Contrast Check

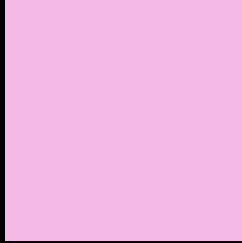
Large Text (above 18pt) WCAG AA × Fail

Any Text WCAG AA × Fail

Large Text (above 18pt) WCAG AAA × Fail

Any Text WCAG AAA × Fail

Black Background



This preview shows how the HunterLab color 77.4187, 24.9223, -10.3255 looks on a black background.

Color Contrast Check

Large Text (above 18pt) WCAG AA ✓ Pass

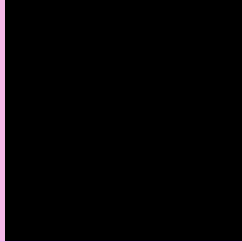
Any Text WCAG AA ✓ Pass

Large Text (above 18pt) WCAG AAA ✓ Pass

Any Text WCAG AAA ✓ Pass

If you want to check with other color combinations, try the [Color Contrast Checker](#).

HunterLab 77.4187, 24.9223, -10.3255 Background



This preview shows how black text looks on a background with the HunterLab color 77.4187, 24.9223, -10.3255.



This preview shows how white text looks on a background with the HunterLab color 77.4187, 24.9223, -10.3255.

-10.3255.

Color Blindness Simulation

Color vision deficiency is a very complex topic, and I could not describe the different causes any better than Wikipedia does, so if you want to learn more, you should check out their [article about color blindness](#).

Dichromacy



Original Color

77.4187, 24.9223, -10.3255

Protanopia

77.6622, 1.5452, -16.8525

Deuteranopia

77.3913, 5.7226, -9.0021



Tritanopia

77.4180, 16.0204, 3.7518

Trichromacy



Original Color

77.4187, 24.9223, -10.3255



Protanomaly

77.3679, 9.4044, -14.7418



Deuteranomaly

77.1629, 12.5165, -9.7563



Tritanomaly

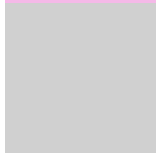
77.2981, 19.1401, -1.3466

Monochromacy



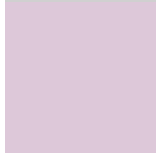
Original Color

77.4187, 24.9223, -10.3255



Achromatopsia

79.4202, -4.2377, 4.3151



Achromatomaly

78.5433, 5.7193, -1.0558

CSS Examples

Text

The CSS property to change the color of the text to HunterLab 77.4187, 24.9223, -10.3255 is called "color". The color property can be set on classes, ids or directly on the HTML element.

This example shows how text in the color `rgb(245, 185, 232)` looks like.

```
.text, #text, p{  
    color:rgb(245, 185, 232)  
}
```

If you want to add a text shadow in that color use the text-shadow property, you can generate a text shadow directly with our [CSS Text Shadow Generator](#).

Here you see how black text with a 4 pixel rgb(245, 185, 232) colored shadow looks like.

```
.shadow{ text-shadow: 4px 4px 2px rgb(245, 185, 232) }
```

Border

The CSS property to change the border of an element to HunterLab 77.4187, 24.9223, -10.3255 is called "border". The border property can be set on classes, ids or directly on the HTML element.

This example shows the color as border, it can be applied via the CSS property "border" or "border-color".

```
.border, #border, table{ border:4px solid rgb(245, 185, 232) }
```


If only the border color should be changed use the property `border-color`.

```
.border{ border-color:rgb(245, 185, 232) }
```

If you want to add a box shadow in that color use:

Here you see how a box with a 4 pixel `rgb(245, 185, 232)` colored shadow looks like.

```
.boxshadow{ -moz-box-shadow:4px 4px 4px  
4px rgb(245, 185, 232); -webkit-box-  
shadow:4px 4px 4px 4px rgb(245, 185, 232);  
box-shadow:4px 4px 4px 4px rgb(245, 185,  
232) }
```

Background

The CSS property to change the background color of an element to HunterLab 77.4187, 24.9223, -10.3255 is called "background". The background property can be set on classes, ids or directly on the HTML element.

```
.background, #background, body{  
background: rgb(245, 185, 232) }
```

If only the background color should be changed can be used:

```
.background{ background-color: rgb(245,  
185, 232) }
```

This example shows the color as background, it is applied via the CSS property "background".

To optimize and compress your CSS code, you can use our [online CSS compressor and optimizer](#) based on csstidy. If you want to create a linear or radial gradient as background or border, check our [CSS Gradient Generator](#).

Hey! You found this booklet interesting? Support Converting Colors with the new Membership Option!

The pro membership hides all ads, plus gives you double the colors in the color bucket, and more awesome pro features!

[Learn more, Memberships starting at \\$2.50/m!](#)

**Follow me
on Twitter!**

@ConvertingColor