

Converting Colors

HunterLab(77.4464, 1.5084,
20.1650)

Have a look what the booklet for
HunterLab(77.4464, 1.5084,
20.1650) contains.

HunterLab(77.3300, 1.7619, 20.0210)	3
<i>Conversions</i>	4
<i>Details</i>	6
<i>Harmonies</i>	12
<i>Previews</i>	24
<i>Color Blindness Simulation</i>	28
<i>CSS Examples</i>	31

Color

**HunterLab(77.3300, 1.7619,
20.0210)**

Conversions

Conversions Part 1

Format	Color
Hex	E5C6A6
RGB	229, 198, 166
RGB Percent	90%, 78%, 65%
CMY	0.1020, 0.2235, 0.3490
CMYK	0.00, 0.14, 0.28, 0.10
HSL	30°, 55%, 77%
HSV	30°, 28%, 90%
XYZ	59.3900, 59.7993, 44.4886
YIQ	203.6210, 28.7480, -3.3800

Conversions

Conversions Part 2

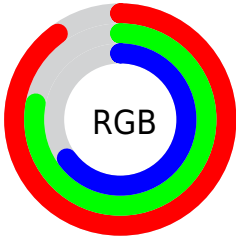
Format	Color
RYB	227, 229, 166
Decimal	15058598
CIELab	81.73, 6.21, 20.09
CIELCh	82, 21.029, 72.820
Yxy	59.8020, 0.3628, 0.3654
Android (android.graphics.Color)	4293248678 (0xFFE5C6A6)
YUV	203.6210, -18.5472, 22.2574
Hunter-Lab	77.3300, 1.7619, 20.0210

Details

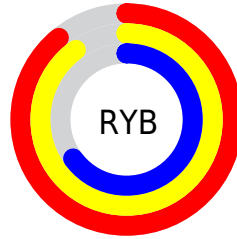
The HunterLab color **77.3300, 1.7619, 20.0210** is a light color, and the websafe version is hex **FFCC99**. A complement of this color would be **73.2769, -6.8395, -14.9462**, and the grayscale version is **77.6138, -4.1413, 4.2169**.

A 20% lighter version of the original color is **98.9952, -10.8687, 19.8401**, and **54.8139, 2.5647, 16.6014** is the 20% darker color. If you saturate the color by 10%, you get **73.5353, 4.8056, 24.4112**, and if you desaturate by 10%, it is **81.2788, -0.9050, 14.9893**.

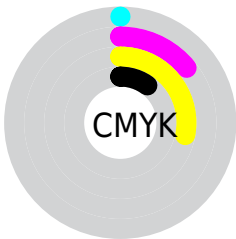
Distribution



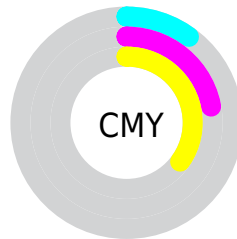
- Red (90%)
- Green (78%)
- Blue (65%)



- Red (89%)
- Yellow (90%)
- Blue (65%)



- Cyan (0%)
- Magenta (14%)
- Yellow (28%)
- Black (10%)



- Cyan (10%)
- Magenta (22%)
- Yellow (35%)

Brightness & Saturation Gradients

These gradients show how the HunterLab color 77.3300, 1.7619, 20.0210 changes by changing the brightness by 10 percent. The first figure shows a shift by +10% for each color and the second figure -10%.

Similar to the brightness gradients but the following saturation gradients show a change of the HunterLab color 77.3300, 1.7619, 20.0210 by changing the saturation by 10% instead.

■ 77.3300, 1.7619,
20.0210

■ 77.3300, 1.7619,
20.0210

205.8805, -2.8907,
34.4517

■ 65.7716, 2.0766,
18.3514

■ 102.2460, 0.9871,
23.2891

■ 54.8529, 2.3426,
16.6432

■ 115.5460, 0.5386,
24.8986

■ 44.6158, 2.5520,
14.8835

129.3773, 0.0519,
26.4983

■ 35.1092, 2.6976,
13.0519

143.7203, -0.4710,
28.0919

■ 26.3941, 2.7698,
11.1175

158.5574, -1.0282,
29.6820

■ 18.5503, 2.7547,
9.0313

173.8725, -1.6181,

■ 11.6882, 2.6306,

31.2708

8.1342

189.6513, -2.2394,
32.8602

■ 4.3769, 5.9500,
3.0638

0.0000, NaN, NaN

■ 77.3300, 1.7619,
20.0210

■ 77.3300, 1.7619,
20.0210

■ 73.5353, 4.8056,
24.4112

■ 81.2788, -0.9050,
14.9893

■ 69.9023, 8.2545,
28.0919

■ 85.3646, -3.2111,
9.3744

■ 66.4466, 12.1196,
30.9992

■ 89.5782, -5.1848,
3.2345

■ 63.1827, 16.4036,
33.0739

■ 93.8201, -7.3459,
-2.1048

■ 60.1252, 21.0925,
34.2722

■ 97.4559, -13.1909,
2.2637

■ 57.2874, 26.1481,
34.5815

■ 97.6719, -13.5318,
2.5181

■ 54.6787, 31.4915,
34.0665

■ 54.0613, 32.8335,
33.8871

Harmonies

Analogous

The Analogous color harmony consists of three colors that are next to each other on the color wheel.



77.3318, 10.8159, 15.8666



77.3300, 1.7619, 20.0210



77.3318, -8.4421, 20.3068

Triad

The Triadic color harmony groups three colors that are evenly spaced from another and form a triangle on the color wheel.



77.3318, 1.7593, 20.0221



77.3318, -22.3717, -0.0540



77.3318, 9.6831, -10.7937

Complementary

The Complementary color scheme is a pair of colors which are on the opposite of each other on the color wheel.



77.3300, 1.7619, 20.0210



73.2769, -6.8395, -14.9462

Split Complementary

Split-complementary colors differ from the complementary color scheme. The scheme consists of three colors, the original color and two neighbors of the complement color.



77.3318, 0.2780, -16.3236



77.3300, 1.7619, 20.0210



77.3318, -18.0212, -9.6032

Square

The Square scheme is like the rectangle color scheme, but the four colors are evenly spaced on the color wheel.



77.3318, 1.7593, 20.0221



77.3318, -22.0213, 9.5292



77.3318, -9.8489, -15.8616



77.3318, 15.5511, -1.5175

Rectangle

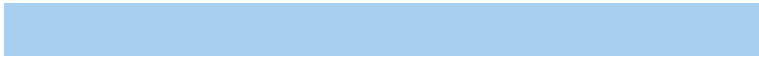
The Rectangle color scheme consists of four colors that form a rectangle on the color wheel.



77.3300, 1.7619, 20.0210



77.3318, -14.4945, 18.3272



77.3318, -9.8489, -15.8616



77.3318, 6.8100, -13.2032

Sweetspot

The Sweet Spot groups the original color and five complimentary colors.



77.3318, 1.7593, 20.0221



96.1862, -3.4976, 10.9467



69.2714, 23.2966, -2.3774



44.1731, -1.4458, 5.5247

0.0000, NaN, NaN



46.2646, -2.4686, 2.5136

Same Dimension

The Same Dimension uses a secret algorithm to generate beautiful new colors.



77.3318, 1.7593, 20.0221



84.9029, 3.8894, 25.5320



86.8620, -13.8814, 28.6555



39.4617, -1.3016, 4.9048



41.1726, 24.1455, 25.7931



11.9940, 4.7961, 7.4746

Inverse Universe

The Inverse Universe completely reimagines the original color for something new.



73.2769, -6.8395, -14.9462



79.4188, -7.6836, -21.8263



64.0604, 9.1198, -28.9754



38.7972, -2.7222, -0.8128



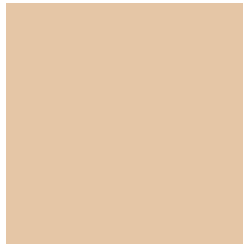
31.9129, 8.8177, -58.9233



9.6860, 0.5037, -13.1941

Previews

White Background



This preview shows how the HunterLab color 77.3300, 1.7619, 20.0210 looks on a white background.

Color Contrast Check

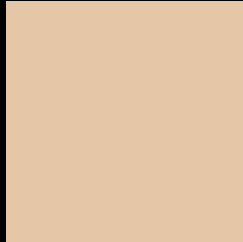
Large Text (above 18pt) WCAG AA × Fail

Any Text WCAG AA × Fail

Large Text (above 18pt) WCAG AAA × Fail

Any Text WCAG AAA × Fail

Black Background



This preview shows how the HunterLab color 77.3300, 1.7619, 20.0210 looks on a black background.

Color Contrast Check

Large Text (above 18pt) WCAG AA ✓ Pass

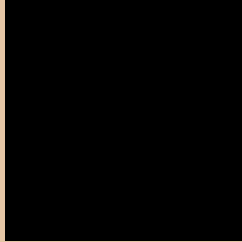
Any Text WCAG AA ✓ Pass

Large Text (above 18pt) WCAG AAA ✓ Pass

Any Text WCAG AAA ✓ Pass

If you want to check with other color combinations, try the [Color Contrast Checker](#).

HunterLab 77.3300, 1.7619, 20.0210 Background



This preview shows how black text looks on a background with the HunterLab color 77.3300, 1.7619, 20.0210.



This preview shows how white text looks on a background with the HunterLab color 77.3300, 1.7619,

Color Blindness Simulation

Color vision deficiency is a very complex topic, and I could not describe the different causes any better than Wikipedia does, so if you want to learn more, you should check out their [article about color blindness](#).

Dichromacy



Original Color

77.3300, 1.7619, 20.0210

Protanopia

77.4507, -5.4431, 19.2702

Deuteranopia

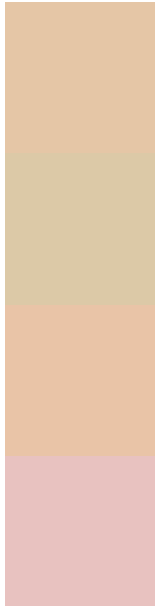
77.2354, 6.0061, 19.6325



Tritanopia

77.2636, 12.7472, 2.5335

Trichromacy



Original Color

77.3300, 1.7619, 20.0210

Protanomaly

77.3168, -2.8395, 19.5573

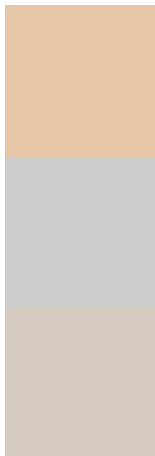
Deuteranomaly

77.1968, 4.3800, 19.5662

Tritanomaly

77.1655, 8.5758, 9.3823

Monochromacy



Original Color

77.3300, 1.7619, 20.0210

Achromatopsia

77.7063, -4.1462, 4.2219

Achromatomaly

77.5273, -2.4659, 10.4733

CSS Examples

Text

The CSS property to change the color of the text to HunterLab 77.3300, 1.7619, 20.0210 is called "color". The color property can be set on classes, ids or directly on the HTML element.

This example shows how text in the color `rgb(229, 198, 166)` looks like.

```
.text, #text, p{  
    color:rgb(229, 198, 166)  
}
```

If you want to add a text shadow in that color use the text-shadow property, you can generate a text shadow directly with our [CSS Text Shadow Generator](#).

Here you see how black text with a 4 pixel rgb(229, 198, 166) colored shadow looks like.

```
.shadow{ text-shadow: 4px 4px 2px rgb(229, 198, 166) }
```

Border

The CSS property to change the border of an element to HunterLab 77.3300, 1.7619, 20.0210 is called "border". The border property can be set on classes, ids or directly on the HTML element.

This example shows the color as border, it can be applied via the CSS property "border" or "border-color".

```
.border, #border, table{ border:4px solid rgb(229, 198, 166) }
```


If only the border color should be changed use the property `border-color`.

```
.border{ border-color:rgb(229, 198, 166) }
```

If you want to add a box shadow in that color use:

Here you see how a box with a 4 pixel `rgb(229, 198, 166)` colored shadow looks like.

```
.boxshadow{ -moz-box-shadow:4px 4px 4px 4px rgb(229, 198, 166); -webkit-box-shadow:4px 4px 4px 4px rgb(229, 198, 166); box-shadow:4px 4px 4px 4px rgb(229, 198, 166) }
```

Background

The CSS property to change the background color of an element to HunterLab 77.3300, 1.7619, 20.0210 is called "background". The background property can be set on classes, ids or directly on the HTML element.

```
.background, #background, body{  
background: rgb(229, 198, 166) }
```

If only the background color should be changed can be used:

```
.background{ background-color: rgb(229,  
198, 166) }
```

This example shows the color as background, it is applied via the CSS property "background".

To optimize and compress your CSS code, you can use our [online CSS compressor and optimizer](#) based on csstidy. If you want to create a linear or radial gradient as background or border, check our [CSS Gradient Generator](#).

Hey! You found this booklet interesting? Support Converting Colors with the new Membership Option!

The pro membership hides all ads, plus gives you double the colors in the color bucket, and more awesome pro features!

[Learn more, Memberships starting at \\$2.50/m!](#)

**Follow me
on Twitter!**

@ConvertingColor