

Converting Colors

HunterLab(77.5172, 2.0266,
13.1403)

Have a look what the booklet for
HunterLab(77.5172, 2.0266,
13.1403) contains.

HunterLab(77.5595, 1.9339, 13.1601)	3
<i>Conversions</i>	4
<i>Details</i>	6
<i>Harmonies</i>	12
<i>Previews</i>	24
<i>Color Blindness Simulation</i>	28
<i>CSS Examples</i>	31

Color

**HunterLab(77.5595, 1.9339,
13.1601)**

Conversions

Conversions Part 1

Format	Color
Hex	E0C7B8
RGB	224, 199, 184
RGB Percent	88%, 78%, 72%
CMY	0.1216, 0.2196, 0.2784
CMYK	0.00, 0.11, 0.18, 0.12
HSL	23°, 39%, 80%
HSV	23°, 18%, 88%
XYZ	59.8155, 60.1548, 53.8057
YIQ	204.7650, 19.7150, 0.6350

Conversions

Conversions Part 2

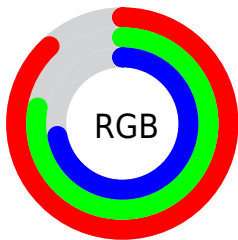
Format	Color
RYB	224, 208, 184
Decimal	14731192
CIELab	81.92, 6.40, 10.71
CIELCh	82, 12.478, 59.157
Yxy	60.1575, 0.3442, 0.3462
Android (android.graphics.Color)	4292921272 (0xFFE0C7B8)
YUV	204.7650, -10.2371, 16.8691
Hunter-Lab	77.5595, 1.9339, 13.1601

Details

The HunterLab color **77.5595, 1.9339, 13.1601** is a light color, and the websafe version is hex **CCCCCC**. A complement of this color would be **78.2123, -9.0159, -5.4236**, and the grayscale version is **78.0715, -4.1657, 4.2418**.

A 20% lighter version of the original color is **99.5346, -7.8917, 12.0885**, and **54.9676, 2.4313, 10.7521** is the 20% darker color. If you saturate the color by 10%, you get **72.8993, 6.0637, 17.3762**, and if you desaturate by 10%, it is **82.4094, -1.8551, 8.5528**.

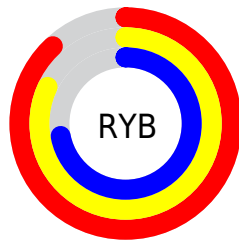
Distribution



Red (88%)

Green (78%)

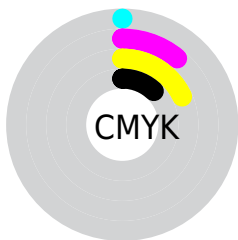
Blue (72%)



Red (88%)

Yellow (82%)

Blue (72%)

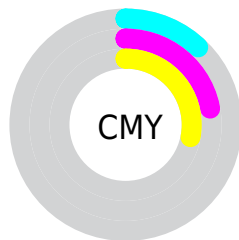


Cyan (0%)

Magenta (11%)

Yellow (18%)

Black (12%)



Cyan (12%)

Magenta (22%)

Yellow (28%)

Brightness & Saturation Gradients

These gradients show how the HunterLab color 77.5595, 1.9339, 13.1601 changes by changing the brightness by 10 percent. The first figure shows a shift by +10% for each color and the second figure -10%.

Similar to the brightness gradients but the following saturation gradients show a change of the HunterLab color 77.5595, 1.9339, 13.1601 by changing the saturation by 10% instead.

■ 77.5595, 1.9339,
13.1601

■ 77.5595, 1.9339,
13.1601

206.1984, -2.6593,
23.9961

■ 65.9891, 2.2410,
12.0004

■ 102.4978, 1.1741,
15.4974

■ 55.0576, 2.4988,
10.8395

115.8083, 0.7325,
16.6772

■ 44.8069, 2.6994,
9.6732

129.6497, 0.2526,
17.8671

■ 35.2856, 2.8358,
8.4931

144.0024, -0.2638,
19.0680

■ 26.5545, 2.8982,
7.2862

158.8488, -0.8147,
20.2808

■ 18.6930, 2.8725,
6.0303

174.1731, -1.3985,

■ 11.8106, 2.7369,

21.5061

4.8121

189.9607, -2.0138,
22.7445

■ 4.6148, 5.7938,
3.2304

0.0000, NaN, NaN

■ 77.5595, 1.9339,
13.1601

■ 77.5595, 1.9339,
13.1601

■ 72.8993, 6.0637,
17.3762

■ 82.4094, -1.8551,
8.5528

■ 68.4449, 10.5672,
21.1346

■ 87.4254, -5.3254,
3.6039

■ 64.2225, 15.4602,
24.3637

■ 92.5930, -8.5089,
-1.6411

■ 60.2596, 20.7460,
26.9825

■ 97.2547, -15.0150,
1.9887

■ 56.5865, 26.4041,
28.9066

■ 97.2560, -15.0171,
1.9903

■ 53.2355, 32.3777,
30.0595

■ 50.2385, 38.5592,
30.3936

■ 47.6217, 44.7678,
29.9564

■ 47.1082, 46.0616,
29.8342

Harmonies

Analogous

The Analogous color harmony consists of three colors that are next to each other on the color wheel.



77.5612, 6.3140, 9.4382



77.5595, 1.9339, 13.1601



77.5612, -3.9709, 14.5220

Triad

The Triadic color harmony groups three colors that are evenly spaced from another and form a triangle on the color wheel.



77.5612, 1.9315, 13.1613



77.5612, -15.4699, 4.3849



77.5612, 1.6254, -6.1119

Complementary

The Complementary color scheme is a pair of colors which are on the opposite of each other on the color wheel.



77.5595, 1.9339, 13.1601



78.2123, -9.0159, -5.4236

Split Complementary

Split-complementary colors differ from the complementary color scheme. The scheme consists of three colors, the original color and two neighbors of the complement color.



77.5612, -4.3142, -7.7188



77.5595, 1.9339, 13.1601



77.5612, -14.0731, -1.3839

Square

The Square scheme is like the rectangle color scheme, but the four colors are evenly spaced on the color wheel.



77.5612, 1.9315, 13.1613



77.5612, -13.9101, 9.7004



77.5612, -10.0354, -5.9271



77.5612, 6.1335, -1.6880

Rectangle

The Rectangle color scheme consists of four colors that form a rectangle on the color wheel.



77.5595, 1.9339, 13.1601



77.5612, -7.9353, 13.9934



77.5612, -10.0354, -5.9271



77.5612, -0.2757, -7.0138

Sweetspot

The Sweet Spot groups the original color and five complimentary colors.



77.5612, 1.9315, 13.1613



97.0708, -3.3180, 8.3270



73.9925, 13.8859, -2.6726



44.7207, -1.4006, 4.0371

0.0000, NaN, NaN



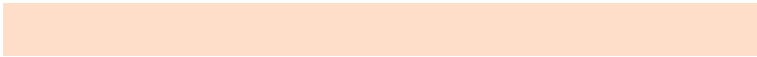
46.2646, -2.4686, 2.5136

Same Dimension

The Same Dimension uses a secret algorithm to generate beautiful new colors.



77.5612, 1.9315, 13.1613



88.0314, 3.7683, 16.9062



83.5450, -8.1015, 19.1557



38.1297, -0.5958, 4.3484



36.2226, 34.3864, 22.9222



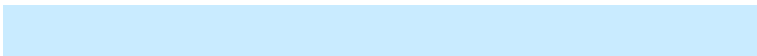
10.3810, 6.9274, 6.5180

Inverse Universe

The Inverse Universe completely reimagines the original color for something new.



78.2123, -9.0159, -5.4236



88.9195, -11.1904, -8.4869



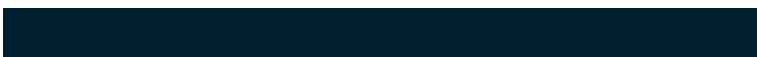
72.1884, 0.9937, -13.4213



38.2925, -3.3265, -0.2880



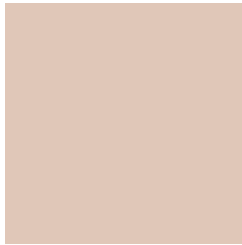
37.7805, -2.7957, -41.1872



10.7690, -2.0362, -9.0647

Previews

White Background



This preview shows how the HunterLab color 77.5595, 1.9339, 13.1601 looks on a white background.

Color Contrast Check

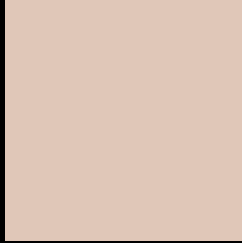
Large Text (above 18pt) WCAG AA × Fail

Any Text WCAG AA × Fail

Large Text (above 18pt) WCAG AAA × Fail

Any Text WCAG AAA × Fail

Black Background



This preview shows how the HunterLab color 77.5595, 1.9339, 13.1601 looks on a black background.

Color Contrast Check

Large Text (above 18pt) WCAG AA ✓ Pass

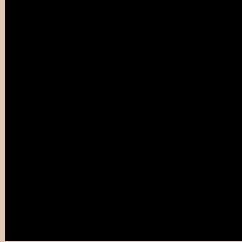
Any Text WCAG AA ✓ Pass

Large Text (above 18pt) WCAG AAA ✓ Pass

Any Text WCAG AAA ✓ Pass

If you want to check with other color combinations, try the [Color Contrast Checker](#).

HunterLab 77.5595, 1.9339, 13.1601 Background



This preview shows how black text looks on a background with the HunterLab color 77.5595, 1.9339, 13.1601.



This preview shows how white text looks on a background with the HunterLab color 77.5595, 1.9339,

Color Blindness Simulation

Color vision deficiency is a very complex topic, and I could not describe the different causes any better than Wikipedia does, so if you want to learn more, you should check out their [article about color blindness](#).

Dichromacy



Original Color

77.5595, 1.9339, 13.1601

Protanopia

77.6235, -3.9148, 12.2802

Deuteranopia

77.7059, 5.4553, 13.3773



Tritanopia

77.4689, 9.1913, 1.2320

Trichromacy



Original Color

77.5595, 1.9339, 13.1601

Protanomaly

77.6806, -2.2133, 12.7952

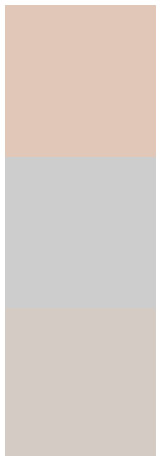
Deuteranomaly

77.6807, 3.8629, 13.3225

Tritanomaly

77.3729, 6.8167, 5.4523

Monochromacy



Original Color

77.5595, 1.9339, 13.1601

Achromatopsia

78.1342, -4.1690, 4.2452

Achromatomaly

77.9360, -2.2074, 7.7996

CSS Examples

Text

The CSS property to change the color of the text to HunterLab 77.5595, 1.9339, 13.1601 is called "color". The color property can be set on classes, ids or directly on the HTML element.

This example shows how text in the color `rgb(224, 199, 184)` looks like.

```
.text, #text, p{  
  color:rgb(224, 199, 184)  
}
```

If you want to add a text shadow in that color use the text-shadow property, you can generate a text shadow directly with our [CSS Text Shadow Generator](#).

Here you see how black text with a 4 pixel rgb(224, 199, 184) colored shadow looks like.

```
.shadow{ text-shadow: 4px 4px 2px rgb(224, 199, 184) }
```

Border

The CSS property to change the border of an element to HunterLab 77.5595, 1.9339, 13.1601 is called "border". The border property can be set on classes, ids or directly on the HTML element.

This example shows the color as border, it can be applied via the CSS property "border" or "border-color".

```
.border, #border, table{ border:4px solid rgb(224, 199, 184) }
```


If only the border color should be changed use the property `border-color`.

```
.border{ border-color:rgb(224, 199, 184) }
```

If you want to add a box shadow in that color use:

Here you see how a box with a 4 pixel `rgb(224, 199, 184)` colored shadow looks like.

```
.boxshadow{ -moz-box-shadow:4px 4px 4px  
4px rgb(224, 199, 184); -webkit-box-  
shadow:4px 4px 4px 4px rgb(224, 199, 184);  
box-shadow:4px 4px 4px 4px rgb(224, 199,  
184) }
```

Background

The CSS property to change the background color of an element to HunterLab 77.5595, 1.9339, 13.1601 is called "background". The background property can be set on classes, ids or directly on the HTML element.

```
.background, #background, body{  
background: rgb(224, 199, 184) }
```

If only the background color should be changed can be used:

```
.background{ background-color: rgb(224,  
199, 184) }
```

This example shows the color as background, it is applied via the CSS property "background".

To optimize and compress your CSS code, you can use our [online CSS compressor and optimizer](#) based on csstidy. If you want to create a linear or radial gradient as background or border, check our [CSS Gradient Generator](#).

Hey! You found this booklet interesting? Support Converting Colors with the new Membership Option!

The pro membership hides all ads, plus gives you double the colors in the color bucket, and more awesome pro features!

[Learn more, Memberships starting at \\$2.50/m!](#)

**Follow me
on Twitter!**

@ConvertingColor