

Converting Colors

HunterLab(77.6641, 0.6420,
10.3306)

Have a look what the booklet for
HunterLab(77.6641, 0.6420,
10.3306) contains.

HunterLab(77.5437, 0.7377, 10.1076)	3
<i>Conversions</i>	4
<i>Details</i>	6
<i>Harmonies</i>	12
<i>Previews</i>	24
<i>Color Blindness Simulation</i>	28
<i>CSS Examples</i>	31

Color

**HunterLab(77.5437, 0.7377,
10.1076)**

Conversions

Conversions Part 1

Format	Color
Hex	DBC8BF
RGB	219, 200, 191
RGB Percent	86%, 78%, 75%
CMY	0.1412, 0.2157, 0.2510
CMYK	0.00, 0.09, 0.13, 0.14
HSL	19°, 28%, 80%
HSV	19°, 13%, 86%
XYZ	59.2717, 60.1303, 57.7726
YIQ	204.6550, 14.2130, 1.2290

Conversions

Conversions Part 2

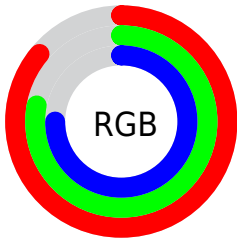
Format	Color
R _Y B	219, 204, 191
Decimal	14403775
CIE Lab	81.91, 5.15, 6.90
CIE LCh	82, 8.608, 53.237
Yxy	60.1329, 0.3345, 0.3394
Android (android.graphics.Color)	4292593855 (0xFFDBC8BF)
YUV	204.6550, -6.7319, 12.5806
Hunter-Lab	77.5437, 0.7377, 10.1076

Details

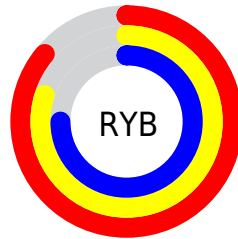
The HunterLab color **77.5437, 0.7377, 10.1076** is a light color, and the websafe version is hex **CCCCCC**. A complement of this color would be **78.9195, -8.4663, -1.8675**, and the grayscale version is **78.0116, -4.1625, 4.2385**.

A 20% lighter version of the original color is **99.7474, -6.7215, 9.0414**, and **55.0320, 1.5723, 8.0329** is the 20% darker color. If you saturate the color by 10%, you get **72.5868, 5.1869, 14.1176**, and if you desaturate by 10%, it is **82.6985, -3.3940, 5.8139**.

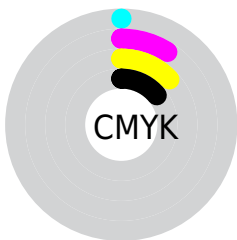
Distribution



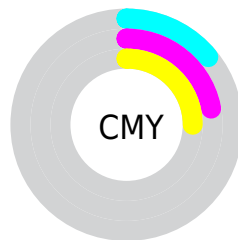
- Red (86%)
- Green (78%)
- Blue (75%)



- Red (86%)
- Yellow (80%)
- Blue (75%)



- Cyan (0%)
- Magenta (9%)
- Yellow (13%)
- Black (14%)



- Cyan (14%)
- Magenta (22%)
- Yellow (25%)

Brightness & Saturation Gradients

These gradients show how the HunterLab color 77.5437, 0.7377, 10.1076 changes by changing the brightness by 10 percent. The first figure shows a shift by +10% for each color and the second figure -10%.

Similar to the brightness gradients but the following saturation gradients show a change of the HunterLab color 77.5437, 0.7377, 10.1076 by changing the saturation by 10% instead.

■ 77.5437, 0.7377,
10.1076

■ 77.5437, 0.7377,
10.1076

■ 206.1765, -4.2946,
19.5423

■ 65.9741, 1.1041,
9.1439

■ 102.4805, -0.1324,
12.0850

■ 55.0435, 1.4244,
8.1927

■ 115.7902, -0.6258,
13.0980

■ 44.7937, 1.6913,
7.2526

■ 129.6309, -1.1557,
14.1282

■ 35.2734, 1.8985,
6.3199

■ 143.9829, -1.7203,
15.1758

■ 26.5435, 2.0375,
5.3881

■ 158.8287, -2.3178,
16.2410

■ 18.6832, 2.0958,
4.4459


■ 174.1524, -2.9469,

■ 11.8022, 2.0539,


17.3239

3.4712


189.9394, -3.6063,
18.4243

 4.5988, 4.6360,
3.2192


0.0000, NaN, NaN


 77.5437, 0.7377,
10.1076


 77.5437, 0.7377,
10.1076


 72.5868, 5.1869,
14.1176


 82.6985, -3.3940,
5.8139


 67.8465, 9.9876,
17.7866

 88.0256, -7.2317,
1.2760

 63.3526, 15.1572,
21.0505

 93.4506, -11.1342,
-2.6353

 59.1373, 20.6999,
23.8313

 96.8505, -16.4719,
1.4734

■ 55.2371, 26.5935,
26.0405

■ 51.6919, 32.7749,
27.5860

■ 48.5432, 39.1228,
28.3881

■ 45.8295, 45.4428,
28.4113

■ 44.1519, 49.8035,
28.0781

Harmonies

Analogous

The Analogous color harmony consists of three colors that are next to each other on the color wheel.



77.5454, 3.3950, 7.1820



77.5437, 0.7377, 10.1076



77.5454, -3.1915, 11.4472

Triad

The Triadic color harmony groups three colors that are evenly spaced from another and form a triangle on the color wheel.



77.5454, 0.7355, 10.1088



77.5454, -11.9753, 5.1175



77.5454, -0.9400, -3.1507

Complementary

The Complementary color scheme is a pair of colors which are on the opposite of each other on the color wheel.



77.5437, 0.7377, 10.1076



78.9195, -8.4663, -1.8675

Split Complementary

Split-complementary colors differ from the complementary color scheme. The scheme consists of three colors, the original color and two neighbors of the complement color.



77.5454, -5.0876, -3.7754



77.5437, 0.7377, 10.1076



77.5454, -11.4013, 1.1385

Square

The Square scheme is like the rectangle color scheme, but the four colors are evenly spaced on the color wheel.



77.5454, 0.7355, 10.1088



77.5454, -10.4862, 8.6660



77.5454, -8.9014, -2.1680



77.5454, 2.4134, -0.5037

Rectangle

The Rectangle color scheme consists of four colors that form a rectangle on the color wheel.



77.5437, 0.7377, 10.1076



77.5454, -5.9765, 11.3117



77.5454, -8.9014, -2.1680



77.5454, -2.2898, -3.6097

Sweetspot

The Sweet Spot groups the original color and five complimentary colors.



77.5454, 0.7355, 10.1088



97.4805, -3.4393, 7.5619



75.4866, 8.5823, -1.2945



44.8815, -1.4233, 3.6813

0.0000, NaN, NaN



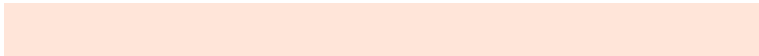
46.2646, -2.4686, 2.5136

Same Dimension

The Same Dimension uses a secret algorithm to generate beautiful new colors.



77.5454, 0.7355, 10.1088



90.7321, 2.0777, 13.1595



81.7607, -6.3452, 14.5252



37.0563, -0.3193, 4.0675



34.2566, 37.6198, 21.7673



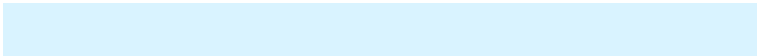
9.5574, 7.3613, 6.0181

Inverse Universe

The Inverse Universe completely reimagines the original color for something new.



78.9195, -8.4663, -1.8675



92.6580, -10.8262, -3.6317



74.6537, -1.4253, -7.2498



37.5323, -3.5053, -0.0802



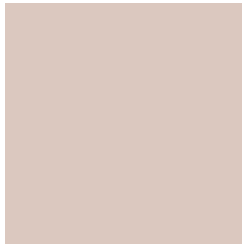
39.8806, -7.0503, -34.6277



10.8801, -2.8831, -7.3755

Previews

White Background



This preview shows how the HunterLab color 77.5437, 0.7377, 10.1076 looks on a white background.

Color Contrast Check

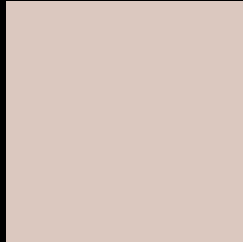
Large Text (above 18pt) WCAG AA × Fail

Any Text WCAG AA × Fail

Large Text (above 18pt) WCAG AAA × Fail

Any Text WCAG AAA × Fail

Black Background



This preview shows how the HunterLab color 77.5437, 0.7377, 10.1076 looks on a black background.

Color Contrast Check

Large Text (above 18pt) WCAG AA ✓ Pass

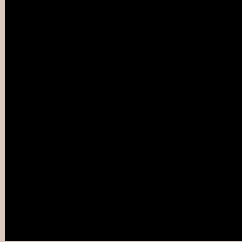
Any Text WCAG AA ✓ Pass

Large Text (above 18pt) WCAG AAA ✓ Pass

Any Text WCAG AAA ✓ Pass

If you want to check with other color combinations, try the [Color Contrast Checker](#).

HunterLab 77.5437, 0.7377, 10.1076 Background



This preview shows how black text looks on a background with the HunterLab color 77.5437, 0.7377, 10.1076.

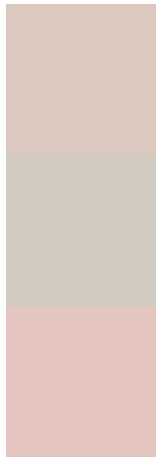


This preview shows how white text looks on a background with the HunterLab color 77.5437, 0.7377,

Color Blindness Simulation

Color vision deficiency is a very complex topic, and I could not describe the different causes any better than Wikipedia does, so if you want to learn more, you should check out their [article about color blindness](#).

Dichromacy



Original Color

77.5437, 0.7377, 10.1076

Protanopia

77.6297, -3.5001, 9.2408

Deuteranopia

77.6094, 5.5760, 9.8225



Tritanopia

77.5987, 6.7611, 0.3431

Trichromacy



Original Color

77.5437, 0.7377, 10.1076

Protanomaly

77.5841, -2.1562, 9.6591

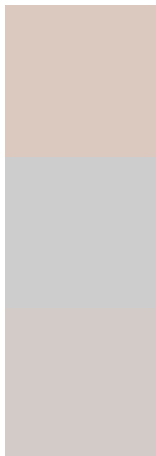
Deuteranomaly

77.5896, 4.0002, 9.7729

Tritanomaly

77.5371, 4.5371, 4.1745

Monochromacy



Original Color

77.5437, 0.7377, 10.1076

Achromatopsia

78.1342, -4.1690, 4.2452

Achromatomaly

77.8355, -2.3761, 6.2964

CSS Examples

Text

The CSS property to change the color of the text to HunterLab 77.5437, 0.7377, 10.1076 is called "color". The color property can be set on classes, ids or directly on the HTML element.

This example shows how text in the color `rgb(219, 200, 191)` looks like.

```
.text, #text, p{  
    color:rgb(219, 200, 191)  
}
```

If you want to add a text shadow in that color use the text-shadow property, you can generate a text shadow directly with our [CSS Text Shadow Generator](#).

Here you see how black text with a 4 pixel rgb(219, 200, 191) colored shadow looks like.

```
.shadow{ text-shadow: 4px 4px 2px rgb(219, 200, 191) }
```

Border

The CSS property to change the border of an element to HunterLab 77.5437, 0.7377, 10.1076 is called "border". The border property can be set on classes, ids or directly on the HTML element.

This example shows the color as border, it can be applied via the CSS property "border" or "border-color".

```
.border, #border, table{ border:4px solid rgb(219, 200, 191) }
```


If only the border color should be changed use the property `border-color`.

```
.border{ border-color:rgb(219, 200, 191) }
```

If you want to add a box shadow in that color use:

Here you see how a box with a 4 pixel `rgb(219, 200, 191)` colored shadow looks like.

```
.boxshadow{ -moz-box-shadow:4px 4px 4px  
4px rgb(219, 200, 191); -webkit-box-  
shadow:4px 4px 4px 4px rgb(219, 200, 191);  
box-shadow:4px 4px 4px 4px rgb(219, 200,  
191) }
```

Background

The CSS property to change the background color of an element to HunterLab 77.5437, 0.7377, 10.1076 is called "background". The background property can be set on classes, ids or directly on the HTML element.

```
.background, #background, body{  
background: rgb(219, 200, 191) }
```

If only the background color should be changed can be used:

```
.background{ background-color: rgb(219,  
200, 191) }
```

This example shows the color as background, it is applied via the CSS property "background".

To optimize and compress your CSS code, you can use our [online CSS compressor and optimizer](#) based on csstidy. If you want to create a linear or radial gradient as background or border, check our [CSS Gradient Generator](#).

Hey! You found this booklet interesting? Support Converting Colors with the new Membership Option!

The pro membership hides all ads, plus gives you double the colors in the color bucket, and more awesome pro features!

[Learn more, Memberships starting at \\$2.50/m!](#)

**Follow me
on Twitter!**

@ConvertingColor