

Converting Colors

HunterLab(77.6934, 4.3502,
9.8939)

Have a look what the booklet for
HunterLab(77.6934, 4.3502, 9.8939)
contains.

HunterLab(77.6934, 4.3502, 9.8939)	3
<i>Conversions</i>	4
<i>Details</i>	6
<i>Harmonies</i>	12
<i>Previews</i>	24
<i>Color Blindness Simulation</i>	28
<i>CSS Examples</i>	31

Color

**HunterLab(77.6934, 4.3502,
9.8939)**

Conversions

Conversions Part 1

Format	Color
Hex	E2C6C0
RGB	226, 198, 192
RGB Percent	89%, 78%, 75%
CMY	0.1137, 0.2235, 0.2471
CMYK	0.00, 0.12, 0.15, 0.11
HSL	11°, 37%, 82%
HSV	11°, 15%, 89%
XYZ	61.0725, 60.3626, 58.3015
YIQ	205.6880, 18.6140, 4.0700

Conversions

Conversions Part 2

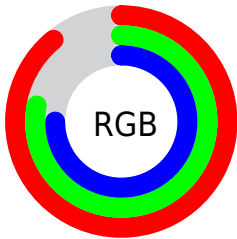
Format	Color
R_{YB}	226, 199, 192
Decimal	14862016
CIE Lab	82.04, 8.89, 6.62
CIE LCh	82, 11.086, 36.670
Yxy	60.3653, 0.3398, 0.3358
Android (android.graphics.Color)	4293052096 (0xFFE2C6C0)
YUV	205.6880, -6.7482, 17.8136
Hunter-Lab	77.6934, 4.3502, 9.8939

Details

The HunterLab color **77.6934, 4.3502, 9.8939** is a light color, and the websafe version is hex **FFCCCC**. A complement of this color would be **82.3908, -11.9003, -1.2176**, and the grayscale version is **78.4526, -4.1860, 4.2625**.

A 20% lighter version of the original color is **99.7784, -6.5511, 8.5977**, and **55.0969, 4.6964, 7.7476** is the 20% darker color. If you saturate the color by 10%, you get **71.7271, 10.7608, 13.1952**, and if you desaturate by 10%, it is **83.9535, -1.7168, 6.4879**.

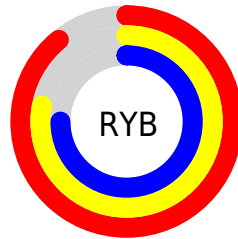
Distribution



Red (89%)

Green (78%)

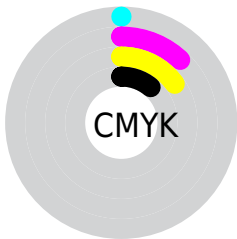
Blue (75%)



Red (89%)

Yellow (78%)

Blue (75%)

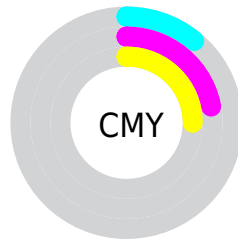


Cyan (0%)

Magenta (12%)

Yellow (15%)

Black (11%)



Cyan (11%)


Magenta (22%)


Yellow (25%)

Brightness & Saturation Gradients


These gradients show how the HunterLab color 77.6934, 4.3502, 9.8939 changes by changing the brightness by 10 percent. The first figure shows a shift by +10% for each color and the second figure -10%.

Similar to the brightness gradients but the following saturation gradients show a change of the HunterLab color 77.6934, 4.3502, 9.8939 by changing the saturation by 10% instead.


 77.6934, 4.3502,
9.8939

 77.6934, 4.3502,
9.8939


206.3839, 0.6281,
19.2310

 66.1159, 4.5404,
8.9439


 102.6448, 3.8089,
11.8462

 55.1771, 4.6751,
8.0073


115.9613, 3.4701,
12.8476

 44.9184, 4.7453,
7.0830

129.8086, 3.0891,
13.8667

 35.3886, 4.7426,
6.1676

144.1669, 2.6685,
14.9036

 26.6482, 4.6552,
5.2551

159.0188, 2.2103,
15.9586

 18.7764, 4.4665,
4.3351

174.3484, 1.7164,

 11.8822, 4.1508,

17.0315

3.3866

190.1411, 1.1886,
18.1223

■ 4.7480, 7.9070,
3.3236

0.0000, NaN, NaN

■ 77.6934, 4.3502,
9.8939

■ 77.6934, 4.3502,
9.8939

■ 71.7271, 10.7608,
13.1952

■ 83.9535, -1.7168,
6.4879

■ 66.0943, 17.5404,
16.3454

■ 90.4654, -7.4643,
3.0022

■ 60.8508, 24.6771,
19.2832

■ 97.0394, -13.8272,
1.7489

■ 56.0605, 32.1113,
21.9212

■ 97.4212, -14.4265,
2.2002

■ 51.7961, 39.7029,
24.1440

■ 48.1353, 47.1995,
25.8150

■ 45.1511, 54.2212,
26.8036

■ 42.8966, 60.2924,
27.0421

■ 42.0480, 62.7701,
27.0087

Harmonies

Analogous

The Analogous color harmony consists of three colors that are next to each other on the color wheel.



77.6951, 6.4254, 5.3667



77.6934, 4.3502, 9.8939



77.6951, 0.0016, 12.7565

Triad

The Triadic color harmony groups three colors that are evenly spaced from another and form a triangle on the color wheel.



77.6951, 4.3478, 9.8951



77.6951, -13.4484, 8.0369



77.6951, -2.9411, -6.2255

Complementary

The Complementary color scheme is a pair of colors which are on the opposite of each other on the color wheel.



77.6934, 4.3502, 9.8939



82.3908, -11.9003, -1.2176

Split Complementary

Split-complementary colors differ from the complementary color scheme. The scheme consists of three colors, the original color and two neighbors of the complement color.



77.6951, -8.2158, -5.3897



77.6934, 4.3502, 9.8939



77.6951, -14.1879, 3.0741

Square

The Square scheme is like the rectangle color scheme, but the four colors are evenly spaced on the color wheel.



77.6951, 4.3478, 9.8951



77.6951, -10.2489, 11.7358



77.6951, -12.2972, -1.8985



77.6951, 2.1435, -4.1104

Rectangle

The Rectangle color scheme consists of four colors that form a rectangle on the color wheel.



77.6934, 4.3502, 9.8939



77.6951, -3.5462, 13.4505



77.6951, -12.2972, -1.8985



77.6951, -4.7515, -6.2824

Sweetspot

The Sweet Spot groups the original color and five complimentary colors.



77.6951, 4.3478, 9.8951



96.2754, -1.9757, 7.4354



76.8465, 12.2666, -4.8530



44.3019, -0.6922, 3.5694

0.0000, NaN, NaN



46.2646, -2.4686, 2.5136

Same Dimension

The Same Dimension uses a secret algorithm to generate beautiful new colors.



77.6951, 4.3478, 9.8951



86.9483, 7.2040, 12.5257



82.7082, -4.2526, 15.1403



37.5365, 0.4201, 3.6982



31.9499, 46.8025, 20.5067



9.0835, 10.3009, 5.7776

Inverse Universe

The Inverse Universe completely reimagines the original color for something new.



82.3908, -11.9003, -1.2176



93.4061, -15.1637, -2.7618



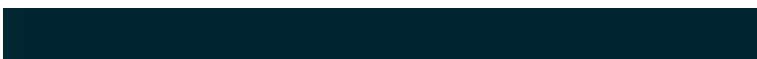
77.1802, -3.4658, -7.7764



38.9088, -4.3225, 0.4517



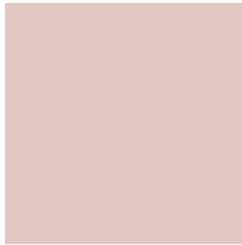
48.3182, -18.2875, -20.9161



13.1438, -5.3732, -4.8294

Previews

White Background



This preview shows how the HunterLab color 77.6934, 4.3502, 9.8939 looks on a white background.

Color Contrast Check

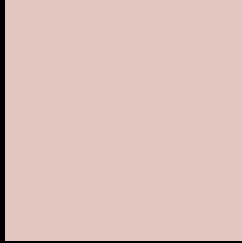
Large Text (above 18pt) WCAG AA × Fail

Any Text WCAG AA × Fail

Large Text (above 18pt) WCAG AAA × Fail

Any Text WCAG AAA × Fail

Black Background



This preview shows how the HunterLab color 77.6934, 4.3502, 9.8939 looks on a black background.

Color Contrast Check

Large Text (above 18pt) WCAG AA ✓ Pass

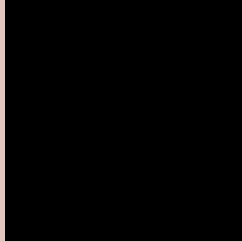
Any Text WCAG AA ✓ Pass

Large Text (above 18pt) WCAG AAA ✓ Pass

Any Text WCAG AAA ✓ Pass

If you want to check with other color combinations, try the [Color Contrast Checker](#).

HunterLab 77.6934, 4.3502, 9.8939 Background



This preview shows how black text looks on a background with the HunterLab color 77.6934, 4.3502, 9.8939.



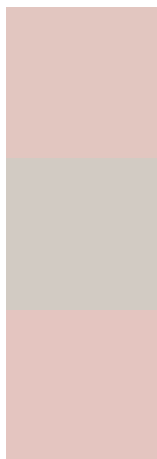
This preview shows how white text looks on a background with the HunterLab color 77.6934, 4.3502,

9.8939.

Color Blindness Simulation

Color vision deficiency is a very complex topic, and I could not describe the different causes any better than Wikipedia does, so if you want to learn more, you should check out their [article about color blindness](#).

Dichromacy



Original Color

77.6934, 4.3502, 9.8939

Protanopia

77.6876, -3.1837, 8.4120

Deuteranopia

77.6094, 5.5760, 9.8225



Tritanopia

77.5741, 9.5389, 1.3662

Trichromacy



Original Color

77.6934, 4.3502, 9.8939

Protanomaly

77.6320, -0.3274, 8.8507

Deuteranomaly

77.5043, 5.2232, 9.6998

Tritanomaly

77.5387, 7.4916, 4.7075

Monochromacy



Original Color

77.6934, 4.3502, 9.8939

Achromatopsia

78.5625, -4.1919, 4.2684

Achromatomaly

78.1505, -1.2297, 6.2119

CSS Examples

Text

The CSS property to change the color of the text to HunterLab 77.6934, 4.3502, 9.8939 is called "color". The color property can be set on classes, ids or directly on the HTML element.

This example shows how text in the color `rgb(226, 198, 192)` looks like.

```
.text, #text, p{  
    color:rgb(226, 198, 192)  
}
```

If you want to add a text shadow in that color use the text-shadow property, you can generate a text shadow directly with our [CSS Text Shadow Generator](#).

Here you see how black text with a 4 pixel rgb(226, 198, 192) colored shadow looks like.

```
.shadow{ text-shadow: 4px 4px 2px rgb(226, 198, 192) }
```

Border

The CSS property to change the border of an element to HunterLab 77.6934, 4.3502, 9.8939 is called "border". The border property can be set on classes, ids or directly on the HTML element.

This example shows the color as border, it can be applied via the CSS property "border" or "border-color".

```
.border, #border, table{ border:4px solid rgb(226, 198, 192) }
```


If only the border color should be changed use the property `border-color`.

```
.border{ border-color:rgb(226, 198, 192) }
```

If you want to add a box shadow in that color use:

Here you see how a box with a 4 pixel `rgb(226, 198, 192)` colored shadow looks like.

```
.boxshadow{ -moz-box-shadow:4px 4px 4px  
4px rgb(226, 198, 192); -webkit-box-  
shadow:4px 4px 4px 4px rgb(226, 198, 192);  
box-shadow:4px 4px 4px 4px rgb(226, 198,  
192) }
```

Background

The CSS property to change the background color of an element to HunterLab 77.6934, 4.3502, 9.8939 is called "background". The background property can be set on classes, ids or directly on the HTML element.

```
.background, #background, body{  
background: rgb(226, 198, 192) }
```

If only the background color should be changed can be used:

```
.background{ background-color: rgb(226,  
198, 192) }
```

This example shows the color as background, it is applied via the CSS property "background".

To optimize and compress your CSS code, you can use our [online CSS compressor and optimizer](#) based on csstidy. If you want to create a linear or radial gradient as background or border, check our [CSS Gradient Generator](#).

Hey! You found this booklet interesting? Support Converting Colors with the new Membership Option!

The pro membership hides all ads, plus gives you double the colors in the color bucket, and more awesome pro features!

[Learn more, Memberships starting at \\$2.50/m!](#)

**Follow me
on Twitter!**

@ConvertingColor