

Converting Colors

HunterLab(77.7961, 5.4452,
3.5972)

Have a look what the booklet for
HunterLab(77.7961, 5.4452, 3.5972)
contains.

HunterLab(77.8026, 5.5536, 3.5404)	3
<i>Conversions</i>	4
<i>Details</i>	6
<i>Harmonies</i>	12
<i>Previews</i>	24
<i>Color Blindness Simulation</i>	28
<i>CSS Examples</i>	31

Color

**HunterLab(77.8026, 5.5536,
3.5404)**

Conversions

Conversions Part 1

Format	Color
Hex	DFC6CE
RGB	223, 198, 206
RGB Percent	87%, 78%, 81%
CMY	0.1255, 0.2235, 0.1922
CMYK	0.00, 0.11, 0.08, 0.13
HSL	341°, 28%, 83%
HSV	341°, 11%, 87%
XYZ	61.7662, 60.5324, 66.8210
YIQ	206.3870, 12.3320, 7.7880

Conversions

Conversions Part 2

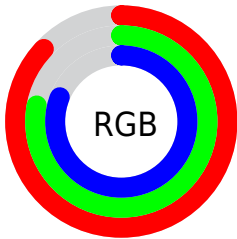
Format	Color
RYB	223, 198, 206
Decimal	14665422
CIELab	82.13, 10.12, -0.77
CIELCh	82, 10.153, 355.623
Yxy	60.5351, 0.3266, 0.3201
Android (android.graphics.Color)	4292855502 (0xFFDFC6CE)
YUV	206.3870, -0.1908, 14.5696
Hunter-Lab	77.8026, 5.5536, 3.5404

Details

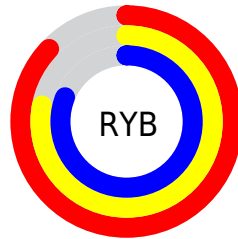
The HunterLab color $77.8026, 5.5536, 3.5404$ is a light color, and the websafe version is hex `CCCCCC`. A complement of this color would be $83.4800, -13.6379, 5.5380$, and the grayscale version is $78.7269, -4.2007, 4.2774$.

A 20% lighter version of the original color is $100.0000, -5.3358, 5.4332$, and $55.2615, 5.9745, 2.2852$ is the 20% darker color. If you saturate the color by 10%, you get $70.9773, 14.8261, 2.9010$, and if you desaturate by 10%, it is $85.0085, -3.5040, 4.5279$.

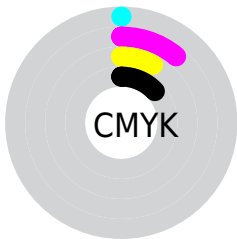
Distribution



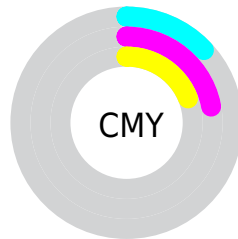
- Red (87%)
- Green (78%)
- Blue (81%)



- Red (87%)
- Yellow (78%)
- Blue (81%)



- Cyan (0%)
- Magenta (11%)
- Yellow (8%)
- Black (13%)



- Cyan (13%)
- Magenta (22%)
- Yellow (19%)

Brightness & Saturation Gradients

These gradients show how the HunterLab color 77.8026, 5.5536, 3.5404 changes by changing the brightness by 10 percent. The first figure shows a shift by +10% for each color and the second figure -10%.

Similar to the brightness gradients but the following saturation gradients show a change of the HunterLab color 77.8026, 5.5536, 3.5404 by changing the saturation by 10% instead.

■ 77.8026, 5.5536,
3.5404

■ 77.8026, 5.5536,
3.5404

206.5351, 2.2572,
10.2843

■ 66.2194, 5.6871,
2.9471

102.7645, 5.1189,
4.8336

■ 55.2745, 5.7620,
2.3893

116.0860, 4.8302,
5.5274

■ 45.0094, 5.7691,
1.8711

129.9381, 4.4976,
6.2513

■ 35.4726, 5.6992,
1.3955

144.3011, 4.1238,
7.0041

■ 26.7247, 5.5398,
0.9668

159.1574, 3.7109,
7.7847

■ 18.8444, 5.2732,
0.5904

174.4913, 3.2611,

■ 11.9406, 4.8724,

8.5922

0.2745

190.2883, 2.7760,
9.4256

4.8539, 8.8291,
-0.3976

0.0000, NaN, NaN

77.8026, 5.5536,
3.5404

77.8026, 5.5536,
3.5404

70.9773, 14.8261,
2.9010

85.0085, -3.5040,
4.5279

64.5949, 24.2800,
2.6848

92.5360, -12.3390,
5.7951

58.7407, 33.8013,
2.9859

97.0592, -15.9526,
3.5233

53.5150, 43.1595,
3.9020

97.1742, -15.3103,
1.8861

■ 49.0315, 51.9544,
5.5129

■ 45.4048, 59.5974,
7.8409

■ 42.7250, 65.3938,
10.7984

■ 41.0186, 68.7839,
14.1564

■ 40.1839, 69.9590,
17.1065

Harmonies

Analogous

The Analogous color harmony consists of three colors that are next to each other on the color wheel.



77.8043, 3.8466, -1.0459



77.8026, 5.5536, 3.5404



77.8043, 4.6025, 8.0450

Triad

The Triadic color harmony groups three colors that are evenly spaced from another and form a triangle on the color wheel.



77.8043, 5.5514, 3.5417



77.8043, -8.2239, 11.9555



77.8043, -9.4507, -3.6041

Complementary

The Complementary color scheme is a pair of colors which are on the opposite of each other on the color wheel.



77.8026, 5.5536, 3.5404



83.4800, -13.6379, 5.5380

Split Complementary

Split-complementary colors differ from the complementary color scheme. The scheme consists of three colors, the original color and two neighbors of the complement color.



77.8043, -12.5427, 0.2222



77.8026, 5.5536, 3.5404



77.8043, -11.8469, 9.1700

Square

The Square scheme is like the rectangle color scheme, but the four colors are evenly spaced on the color wheel.



77.8043, 5.5514, 3.5417



77.8043, -3.4287, 12.7228



77.8043, -13.4089, 4.9221



77.8043, -4.8798, -5.3317

Rectangle

The Rectangle color scheme consists of four colors that form a rectangle on the color wheel.



77.8026, 5.5536, 3.5404



77.8043, 2.6050, 10.4252



77.8043, -13.4089, 4.9221



77.8043, -10.6930, -2.5095

Sweetspot

The Sweet Spot groups the original color and five complimentary colors.



77.8043, 5.5514, 3.5417



97.4090, -2.1867, 5.0365



77.5342, 5.7679, -5.5085



44.7482, -0.6204, 2.2834

0.0000, NaN, NaN



46.2646, -2.4686, 2.5136

Same Dimension

The Same Dimension uses a secret algorithm to generate beautiful new colors.



77.8043, 5.5514, 3.5417



89.0365, 8.4824, 3.9488



78.7954, 2.0762, 8.3865



37.1112, 1.8500, 1.7335



30.8425, 53.7535, 12.6834



8.2177, 14.5103, 1.9209

Inverse Universe

The Inverse Universe completely reimagines the original color for something new.



77.8043, 5.5514, 3.5417



89.0365, 8.4824, 3.9488



82.4084, -10.1407, 0.3741



37.1112, 1.8500, 1.7335



30.8425, 53.7535, 12.6834



8.2177, 14.5103, 1.9209

Previews

White Background



This preview shows how the HunterLab color 77.8026, 5.5536, 3.5404 looks on a white background.

Color Contrast Check

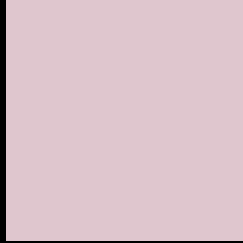
Large Text (above 18pt) WCAG AA × Fail

Any Text WCAG AA × Fail

Large Text (above 18pt) WCAG AAA × Fail

Any Text WCAG AAA × Fail

Black Background



This preview shows how the HunterLab color 77.8026, 5.5536, 3.5404 looks on a black background.

Color Contrast Check

Large Text (above 18pt) WCAG AA ✓ Pass

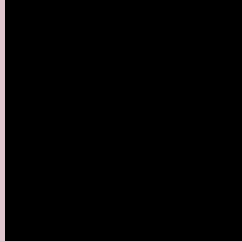
Any Text WCAG AA ✓ Pass

Large Text (above 18pt) WCAG AAA ✓ Pass

Any Text WCAG AAA ✓ Pass

If you want to check with other color combinations, try the [Color Contrast Checker](#).

HunterLab 77.8026, 5.5536, 3.5404 Background



This preview shows how black text looks on a background with the HunterLab color 77.8026, 5.5536, 3.5404.



This preview shows how white text looks on a background with the HunterLab color 77.8026, 5.5536,

3.5404.

Color Blindness Simulation

Color vision deficiency is a very complex topic, and I could not describe the different causes any better than Wikipedia does, so if you want to learn more, you should check out their [article about color blindness](#).

Dichromacy



Original Color

77.8026, 5.5536, 3.5404

Protanopia

77.8336, -1.8259, 1.9786

Deuteranopia

77.8026, 5.5536, 3.5404



Tritanopia

77.8031, 7.4427, 0.6060

Trichromacy



Original Color

77.8026, 5.5536, 3.5404

Protanomaly

77.7647, 0.9747, 2.4378

Deuteranomaly

77.8026, 5.5536, 3.5404

Tritanomaly

77.7386, 7.0988, 1.5235

Monochromacy



Original Color

77.8026, 5.5536, 3.5404

Achromatopsia

78.5625, -4.1919, 4.2684

Achromatomaly

78.2082, -0.7257, 3.9111

CSS Examples

Text

The CSS property to change the color of the text to HunterLab 77.8026, 5.5536, 3.5404 is called "color". The color property can be set on classes, ids or directly on the HTML element.

This example shows how text in the color `rgb(223, 198, 206)` looks like.

```
.text, #text, p{  
    color:rgb(223, 198, 206)  
}
```

If you want to add a text shadow in that color use the text-shadow property, you can generate a text shadow directly with our [CSS Text Shadow Generator](#).

Here you see how black text with a 4 pixel rgb(223, 198, 206) colored shadow looks like.

```
.shadow{ text-shadow: 4px 4px 2px rgb(223, 198, 206) }
```

Border

The CSS property to change the border of an element to HunterLab 77.8026, 5.5536, 3.5404 is called "border".

The border property can be set on classes, ids or directly on the HTML element.

This example shows the color as border, it can be applied via the CSS property "border" or "border-color".

```
.border, #border, table{ border:4px solid rgb(223, 198, 206) }
```


If only the border color should be changed use the property `border-color`.

```
.border{ border-color:rgb(223, 198, 206) }
```

If you want to add a box shadow in that color use:

Here you see how a box with a 4 pixel `rgb(223, 198, 206)` colored shadow looks like.

```
.boxshadow{ -moz-box-shadow:4px 4px 4px  
4px rgb(223, 198, 206); -webkit-box-  
shadow:4px 4px 4px 4px rgb(223, 198, 206);  
box-shadow:4px 4px 4px 4px rgb(223, 198,  
206) }
```

Background

The CSS property to change the background color of an element to HunterLab 77.8026, 5.5536, 3.5404 is called "background". The background property can be set on classes, ids or directly on the HTML element.

```
.background, #background, body{  
background: rgb(223, 198, 206) }
```

If only the background color should be changed can be used:

```
.background{ background-color: rgb(223,  
198, 206) }
```

This example shows the color as background, it is applied via the CSS property "background".

To optimize and compress your CSS code, you can use our [online CSS compressor and optimizer](#) based on csstidy. If you want to create a linear or radial gradient as background or border, check our [CSS Gradient Generator](#).

Hey! You found this booklet interesting? Support Converting Colors with the new Membership Option!

The pro membership hides all ads, plus gives you double the colors in the color bucket, and more awesome pro features!

[Learn more, Memberships starting at \\$2.50/m!](#)

**Follow me
on Twitter!**

@ConvertingColor