

Converting Colors

HunterLab(77.8346, 5.3817,
9.6232)

Have a look what the booklet for
HunterLab(77.8346, 5.3817, 9.6232)
contains.

HunterLab(77.9310, 5.2064, 9.7279)	3
<i>Conversions</i>	4
<i>Details</i>	6
<i>Harmonies</i>	12
<i>Previews</i>	24
<i>Color Blindness Simulation</i>	28
<i>CSS Examples</i>	31

Color

**HunterLab(77.9310, 5.2064,
9.7279)**

Conversions

Conversions Part 1

Format	Color
Hex	E4C6C1
RGB	228, 198, 193
RGB Percent	89%, 78%, 76%
CMY	0.1059, 0.2235, 0.2431
CMYK	0.00, 0.13, 0.15, 0.11
HSL	9°, 39%, 83%
HSV	9°, 15%, 89%
XYZ	61.8146, 60.7324, 58.9166
YIQ	206.4000, 19.4850, 4.8050

Conversions

Conversions Part 2

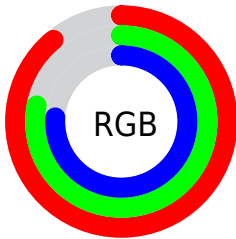
Format	Color
R _Y B	228, 199, 193
Decimal	14993089
CIE Lab	82.24, 9.77, 6.40
CIE LCh	82, 11.679, 33.207
Yxy	60.7351, 0.3406, 0.3347
Android (android.graphics.Color)	4293183169 (0xFFE4C6C1)
YUV	206.4000, -6.6062, 18.9432
Hunter-Lab	77.9310, 5.2064, 9.7279

Details

The HunterLab color $77.9310, 5.2064, 9.7279$ is a light color, and the websafe version is hex FFCCCC . A complement of this color would be $83.4941, -12.7473, -0.8961$, and the grayscale version is $78.7569, -4.2023, 4.2790$.

A 20% lighter version of the original color is $99.8096, -6.3799, 8.1519$, and $55.3269, 5.5161, 7.6005$ is the 20% darker color. If you saturate the color by 10%, you get $71.7149, 12.0996, 12.8783$, and if you desaturate by 10%, it is $84.4685, -1.3362, 6.5194$.

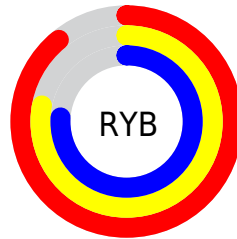
Distribution



Red (89%)

Green (78%)

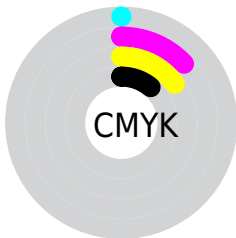
Blue (76%)



Red (89%)

Yellow (78%)

Blue (76%)

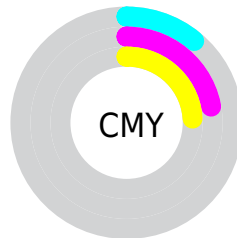


Cyan (0%)

Magenta (13%)

Yellow (15%)

Black (11%)



Cyan (11%)


Magenta (22%)


Yellow (24%)

Brightness & Saturation Gradients


These gradients show how the HunterLab color 77.9310, 5.2064, 9.7279 changes by changing the brightness by 10 percent. The first figure shows a shift by +10% for each color and the second figure -10%.


Similar to the brightness gradients but the following saturation gradients show a change of the HunterLab color 77.9310, 5.2064, 9.7279 by changing the saturation by 10% instead.


 77.9310, 5.2064,
9.7279

 77.9310, 5.2064,
9.7279


206.7129, 1.7834,
18.9871

 66.3411, 5.3567,
8.7889


 102.9055, 4.7398,
11.6602

 55.3891, 5.4494,
7.8640


116.2328, 4.4362,
12.6523

 45.1164, 5.4755,
6.9525


130.0905, 4.0892,
13.6625

 35.5715, 5.4258,
6.0510

144.4589, 3.7015,
14.6909

 26.8146, 5.2882,
5.1542

159.3205, 3.2752,
15.7377

 18.9245, 5.0453,
4.2521

174.6594, 2.8123,

 12.0094, 4.6706,

16.8027

3.3255

190.4613, 2.3145,
17.8859

■ 4.9755, 8.2920,
3.4828

0.0000, NaN, NaN

■ 77.9310, 5.2064,
9.7279

■ 77.9310, 5.2064,
9.7279

■ 71.7149, 12.0996,
12.8783

■ 84.4685, -1.3362,
6.5194

■ 65.8664, 19.3638,
15.9291

■ 91.2802, -7.5513,
3.2723

■ 60.4496, 26.9739,
18.8219

■ 97.5880, -13.8311,
2.4118

■ 55.5384, 34.8431,
21.4682

■ 51.2168, 42.7832,
23.7452

■ 47.5726, 50.4706,
25.5025

■ 44.6852, 57.4422,
26.5920

■ 42.6040, 63.1605,
26.9342

■ 41.9043, 65.2270,
26.9631

Harmonies

Analogous

The Analogous color harmony consists of three colors that are next to each other on the color wheel.



77.9327, 7.0641, 4.8220



77.9310, 5.2064, 9.7279



77.9327, 0.8306, 12.9718

Triad

The Triadic color harmony groups three colors that are evenly spaced from another and form a triangle on the color wheel.



77.9327, 5.2040, 9.7292



77.9327, -13.6896, 8.7890



77.9327, -3.5495, -6.8804

Complementary

The Complementary color scheme is a pair of colors which are on the opposite of each other on the color wheel.



77.9310, 5.2064, 9.7279



83.4941, -12.7473, -0.8961

Split Complementary

Split-complementary colors differ from the complementary color scheme. The scheme consists of three colors, the original color and two neighbors of the complement color.



77.9327, -9.0329, -5.6312



77.9310, 5.2064, 9.7279



77.9327, -14.7875, 3.6576

Square

The Square scheme is like the rectangle color scheme, but the four colors are evenly spaced on the color wheel.



77.9327, 5.2040, 9.7292



77.9327, -10.0640, 12.4570



77.9327, -13.1065, -1.6754



77.9327, 1.9200, -4.9775

Rectangle

The Rectangle color scheme consists of four colors that form a rectangle on the color wheel.



77.9310, 5.2064, 9.7279



77.9327, -2.8642, 13.8847



77.9327, -13.1065, -1.6754



77.9327, -5.4523, -6.8156

Sweetspot

The Sweet Spot groups the original color and five complimentary colors.



77.9327, 5.2040, 9.7292



96.1411, -1.7481, 7.2843



77.4470, 12.9657, -5.6766



44.2312, -0.5721, 3.4900

0.0000, NaN, NaN



46.2646, -2.4686, 2.5136

Same Dimension

The Same Dimension uses a secret algorithm to generate beautiful new colors.



77.9327, 5.2040, 9.7292



86.4913, 8.0279, 12.0410



83.0847, -3.6804, 15.1284



38.3389, 0.6142, 3.6786



32.0031, 49.0422, 20.5788



9.2849, 11.5192, 5.9230

Inverse Universe

The Inverse Universe completely reimagines the original color for something new.



83.4941, -12.7473, -0.8961



93.9116, -15.9467, -2.1408



78.1038, -4.0637, -7.6627



39.9582, -4.6053, 0.5865



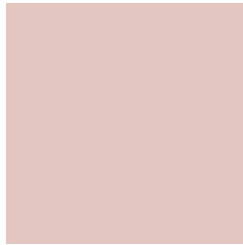
50.9998, -21.0909, -18.2161



14.2081, -6.1778, -4.4228

Previews

White Background



This preview shows how the HunterLab color 77.9310, 5.2064, 9.7279 looks on a white background.

Color Contrast Check

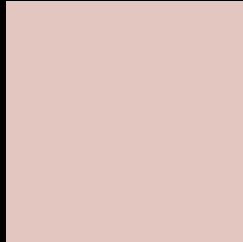
Large Text (above 18pt) WCAG AA × Fail

Any Text WCAG AA × Fail

Large Text (above 18pt) WCAG AAA × Fail

Any Text WCAG AAA × Fail

Black Background



This preview shows how the HunterLab color 77.9310, 5.2064, 9.7279 looks on a black background.

Color Contrast Check

Large Text (above 18pt) WCAG AA ✓ Pass

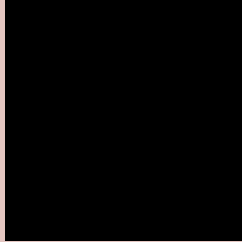
Any Text WCAG AA ✓ Pass

Large Text (above 18pt) WCAG AAA ✓ Pass

Any Text WCAG AAA ✓ Pass

If you want to check with other color combinations, try the [Color Contrast Checker](#).

HunterLab 77.9310, 5.2064, 9.7279 Background



This preview shows how black text looks on a background with the HunterLab color 77.9310, 5.2064, 9.7279.



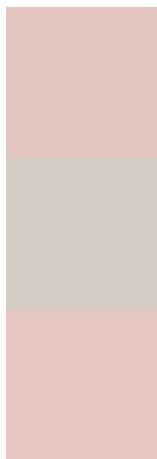
This preview shows how white text looks on a background with the HunterLab color 77.9310, 5.2064,

9.7279.

Color Blindness Simulation

Color vision deficiency is a very complex topic, and I could not describe the different causes any better than Wikipedia does, so if you want to learn more, you should check out their [article about color blindness](#).

Dichromacy



Original Color

77.9310, 5.2064, 9.7279

Protanopia

78.0211, -3.5331, 8.3277

Deuteranopia

78.0362, 5.5594, 9.8506



Tritanopia

77.8180, 10.4073, 1.1785

Trichromacy



Original Color

77.9310, 5.2064, 9.7279

Protanomaly

78.0595, -0.3476, 8.8785

Deuteranomaly

78.0362, 5.5594, 9.8506

Tritanomaly

77.7801, 8.3555, 4.5276

Monochromacy



Original Color

77.9310, 5.2064, 9.7279

Achromatopsia

78.5625, -4.1919, 4.2684

Achromatomaly

78.2464, -0.8999, 6.3282

CSS Examples

Text

The CSS property to change the color of the text to HunterLab 77.9310, 5.2064, 9.7279 is called "color". The color property can be set on classes, ids or directly on the HTML element.

This example shows how text in the color `rgb(228, 198, 193)` looks like.

```
.text, #text, p{  
    color:rgb(228, 198, 193)  
}
```

If you want to add a text shadow in that color use the text-shadow property, you can generate a text shadow directly with our [CSS Text Shadow Generator](#).

Here you see how black text with a 4 pixel rgb(228, 198, 193) colored shadow looks like.

```
.shadow{ text-shadow: 4px 4px 2px rgb(228, 198, 193) }
```

Border

The CSS property to change the border of an element to HunterLab 77.9310, 5.2064, 9.7279 is called "border". The border property can be set on classes, ids or directly on the HTML element.

This example shows the color as border, it can be applied via the CSS property "border" or "border-color".

```
.border, #border, table{ border:4px solid rgb(228, 198, 193) }
```


If only the border color should be changed use the property `border-color`.

```
.border{ border-color:rgb(228, 198, 193) }
```

If you want to add a box shadow in that color use:

Here you see how a box with a 4 pixel `rgb(228, 198, 193)` colored shadow looks like.

```
.boxshadow{ -moz-box-shadow:4px 4px 4px 4px rgb(228, 198, 193); -webkit-box-shadow:4px 4px 4px 4px rgb(228, 198, 193); box-shadow:4px 4px 4px 4px rgb(228, 198, 193) }
```

Background

The CSS property to change the background color of an element to HunterLab 77.9310, 5.2064, 9.7279 is called "background". The background property can be set on classes, ids or directly on the HTML element.

```
.background, #background, body{  
background: rgb(228, 198, 193) }
```

If only the background color should be changed can be used:

```
.background{ background-color: rgb(228,  
198, 193) }
```

This example shows the color as background, it is applied via the CSS property "background".

To optimize and compress your CSS code, you can use our [online CSS compressor and optimizer](#) based on csstidy. If you want to create a linear or radial gradient as background or border, check our [CSS Gradient Generator](#).

Hey! You found this booklet interesting? Support Converting Colors with the new Membership Option!

The pro membership hides all ads, plus gives you double the colors in the color bucket, and more awesome pro features!

[Learn more, Memberships starting at \\$2.50/m!](#)

**Follow me
on Twitter!**

@ConvertingColor