

Converting Colors

HunterLab(77.9073, 1.0711,
17.5497)

Have a look what the booklet for
HunterLab(77.9073, 1.0711,
17.5497) contains.

HunterLab(77.9073, 1.0711, 17.5497)	3
<i>Conversions</i>	4
<i>Details</i>	6
<i>Harmonies</i>	12
<i>Previews</i>	24
<i>Color Blindness Simulation</i>	28
<i>CSS Examples</i>	31

Color

**HunterLab(77.9073, 1.0711,
17.5497)**

Conversions

Conversions Part 1

Format	Color
Hex	E3C8AE
RGB	227, 200, 174
RGB Percent	89%, 78%, 68%
CMY	0.1098, 0.2157, 0.3176
CMYK	0.00, 0.12, 0.23, 0.11
HSL	29°, 49%, 79%
HSV	29°, 23%, 89%
XYZ	59.9729, 60.6955, 48.5990
YIQ	205.1090, 24.4380, -2.3620

Conversions

Conversions Part 2

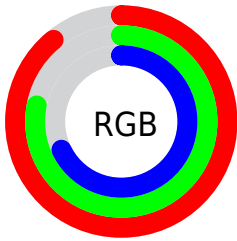
Format	Color
R _Y B	227, 225, 174
Decimal	14928046
CIE Lab	82.22, 5.51, 16.49
CIE LCh	82, 17.388, 71.521
Yxy	60.6982, 0.3543, 0.3586
Android (android.graphics.Color)	4293118126 (0xFFE3C8AE)
YUV	205.1090, -15.3367, 19.1984
Hunter-Lab	77.9073, 1.0711, 17.5497

Details

The HunterLab color $77.9073, 1.0711, 17.5497$ is a light color, and the websafe version is hex `FFCCCC`. A complement of this color would be $75.0444, -7.1486, -11.2999$, and the grayscale version is $78.2386, -4.1746, 4.2508$.

A 20% lighter version of the original color is $99.2437, -9.4948, 16.2628$, and $55.3361, 1.8254, 14.4018$ is the 20% darker color. If you saturate the color by 10%, you get $73.9806, 4.1236, 22.0914$, and if you desaturate by 10%, it is $81.9877, -1.6187, 12.4219$.

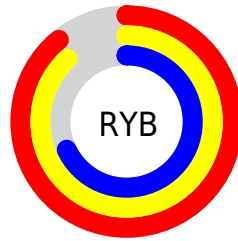
Distribution



Red (89%)

Green (78%)

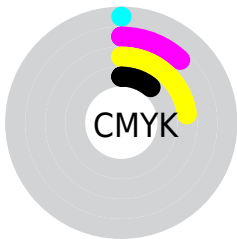
Blue (68%)



Red (89%)

Yellow (88%)

Blue (68%)

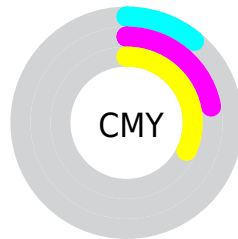


Cyan (0%)

Magenta (12%)

Yellow (23%)

Black (11%)



Cyan (11%)

Magenta (22%)

Yellow (32%)

Brightness & Saturation Gradients

These gradients show how the HunterLab color 77.9073, 1.0711, 17.5497 changes by changing the brightness by 10 percent. The first figure shows a shift by +10% for each color and the second figure -10%.

Similar to the brightness gradients but the following saturation gradients show a change of the HunterLab color 77.9073, 1.0711, 17.5497 by changing the saturation by 10% instead.

■ 77.9073, 1.0711,
17.5497

■ 77.9073, 1.0711,
17.5497

206.6801, -3.8441,
30.5760

■ 66.3187, 1.4215,
16.0809

■ 102.8795, 0.2301,
20.4523

■ 55.3680, 1.7253,
14.5890

116.2057, -0.2494,
21.8936

■ 45.0967, 1.9747,
13.0643

130.0624, -0.7660,
23.3331

■ 35.5532, 2.1634,
11.4915

144.4298, -1.3177,
24.7734

■ 26.7980, 2.2824,
9.8471

159.2904, -1.9027,
26.2164

■ 18.9097, 2.3191,
8.0927

174.6284, -2.5197,

■ 11.9967, 2.2535,

27.6637

6.8183

190.4294, -3.1672,
29.1165

■ 4.9533, 4.5838,
3.4673

0.0000, NaN, NaN

■ 77.9073, 1.0711,
17.5497

■ 77.9073, 1.0711,
17.5497

■ 73.9806, 4.1236,
22.0914

■ 81.9877, -1.6187,
12.4219

■ 70.2159, 7.5690,
25.9791

■ 86.2042, -3.9635,
6.7643

■ 66.6296, 11.4214,
29.1470

■ 90.5475, -5.9920,
0.6319

■ 63.2373, 15.6881,
31.5301

■ 94.6665, -9.6132,
-1.0884

60.0554, 20.3609,
33.0729

97.5043, -14.1295,
2.3057

57.0996, 25.4091,
33.7427

54.3839, 30.7697,
33.5529

52.7092, 34.4296,
33.0819

Harmonies

Analogous

The Analogous color harmony consists of three colors that are next to each other on the color wheel.



77.9091, 8.4120, 13.8281



77.9073, 1.0711, 17.5497



77.9091, -7.3876, 17.9459

Triad

The Triadic color harmony groups three colors that are evenly spaced from another and form a triangle on the color wheel.



77.9091, 1.0686, 17.5508



77.9091, -19.4865, 1.0824



77.9091, 6.9321, -8.2740

Complementary

The Complementary color scheme is a pair of colors which are on the opposite of each other on the color wheel.



77.9073, 1.0711, 17.5497



75.0444, -7.1486, -11.2999

Split Complementary

Split-complementary colors differ from the complementary color scheme. The scheme consists of three colors, the original color and two neighbors of the complement color.



77.9091, -0.8814, -12.5192



77.9073, 1.0711, 17.5497



77.9091, -15.9844, -6.7447

Square

The Square scheme is like the rectangle color scheme, but the four colors are evenly spaced on the color wheel.



77.9091, 1.0686, 17.5508



77.9091, -19.0146, 8.9934



77.9091, -9.2566, -11.9314



77.9091, 11.8957, -0.8315

Rectangle

The Rectangle color scheme consists of four colors that form a rectangle on the color wheel.



77.9073, 1.0711, 17.5497



77.9091, -12.4948, 16.3258



77.9091, -9.2566, -11.9314



77.9091, 4.5381, -10.1564

Sweetspot

The Sweet Spot groups the original color and five complimentary colors.



77.9091, 1.0686, 17.5508



96.5603, -3.5767, 10.1710



71.3014, 18.9285, -1.8800



44.5376, -1.5806, 4.8887

0.0000, NaN, NaN



46.2646, -2.4686, 2.5136

Same Dimension

The Same Dimension uses a secret algorithm to generate beautiful new colors.



77.9091, 1.0686, 17.5508



86.7038, 2.8497, 22.6169



85.9322, -12.1486, 25.1086



39.4078, -1.2109, 4.8467



40.5403, 25.6151, 25.4292



11.8324, 5.1406, 7.3811

Inverse Universe

The Inverse Universe completely reimagines the original color for something new.



75.0444, -7.1486, -11.2999



82.7831, -8.3672, -16.8949



67.2013, 6.2529, -22.5993



38.8520, -2.8122, -0.7459



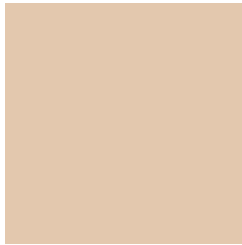
32.7151, 7.2428, -56.5260



9.8832, 0.1589, -12.6961

Previews

White Background



This preview shows how the HunterLab color 77.9073, 1.0711, 17.5497 looks on a white background.

Color Contrast Check

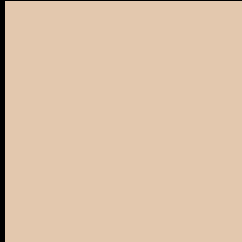
Large Text (above 18pt) WCAG AA × Fail

Any Text WCAG AA × Fail

Large Text (above 18pt) WCAG AAA × Fail

Any Text WCAG AAA × Fail

Black Background



This preview shows how the HunterLab color 77.9073, 1.0711, 17.5497 looks on a black background.

Color Contrast Check

Large Text (above 18pt) WCAG AA ✓ Pass

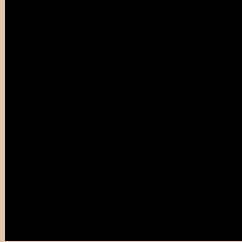
Any Text WCAG AA ✓ Pass

Large Text (above 18pt) WCAG AAA ✓ Pass

Any Text WCAG AAA ✓ Pass

If you want to check with other color combinations, try the [Color Contrast Checker](#).

HunterLab 77.9073, 1.0711, 17.5497 Background



This preview shows how black text looks on a background with the HunterLab color 77.9073, 1.0711, 17.5497.



This preview shows how white text looks on a background with the HunterLab color 77.9073, 1.0711,

Color Blindness Simulation

Color vision deficiency is a very complex topic, and I could not describe the different causes any better than Wikipedia does, so if you want to learn more, you should check out their [article about color blindness](#).

Dichromacy



Original Color

77.9073, 1.0711, 17.5497

Protanopia

77.9534, -4.8595, 16.7091

Deuteranopia

77.9037, 5.6486, 17.2358



Tritanopia

77.8924, 10.5881, 1.7712

Trichromacy



Original Color

77.9073, 1.0711, 17.5497

Protanomaly

78.0174, -3.1263, 17.1972

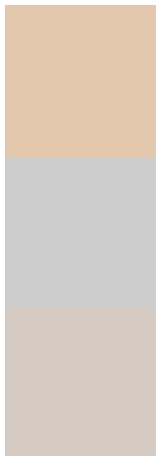
Deuteranomaly

77.8711, 4.0356, 17.1746

Tritanomaly

77.9658, 7.0575, 7.9956

Monochromacy



Original Color

77.9073, 1.0711, 17.5497

Achromatopsia

78.1342, -4.1690, 4.2452

Achromatomaly

77.9442, -2.3535, 9.1638

CSS Examples

Text

The CSS property to change the color of the text to HunterLab 77.9073, 1.0711, 17.5497 is called "color". The color property can be set on classes, ids or directly on the HTML element.

This example shows how text in the color `rgb(227, 200, 174)` looks like.

```
.text, #text, p{  
    color:rgb(227, 200, 174)  
}
```

If you want to add a text shadow in that color use the text-shadow property, you can generate a text shadow directly with our [CSS Text Shadow Generator](#).

Here you see how black text with a 4 pixel rgb(227, 200, 174) colored shadow looks like.

```
.shadow{ text-shadow: 4px 4px 2px rgb(227, 200, 174) }
```

Border

The CSS property to change the border of an element to HunterLab 77.9073, 1.0711, 17.5497 is called "border". The border property can be set on classes, ids or directly on the HTML element.

This example shows the color as border, it can be applied via the CSS property "border" or "border-color".

```
.border, #border, table{ border:4px solid rgb(227, 200, 174) }
```


If only the border color should be changed use the property `border-color`.

```
.border{ border-color:rgb(227, 200, 174) }
```

If you want to add a box shadow in that color use:

Here you see how a box with a 4 pixel `rgb(227, 200, 174)` colored shadow looks like.

```
.boxshadow{ -moz-box-shadow:4px 4px 4px  
4px rgb(227, 200, 174); -webkit-box-  
shadow:4px 4px 4px 4px rgb(227, 200, 174);  
box-shadow:4px 4px 4px 4px rgb(227, 200,  
174) }
```

Background

The CSS property to change the background color of an element to HunterLab 77.9073, 1.0711, 17.5497 is called "background". The background property can be set on classes, ids or directly on the HTML element.

```
.background, #background, body{  
background: rgb(227, 200, 174) }
```

If only the background color should be changed can be used:

```
.background{ background-color: rgb(227,  
200, 174) }
```

This example shows the color as background, it is applied via the CSS property "background".

To optimize and compress your CSS code, you can use our [online CSS compressor and optimizer](#) based on csstidy. If you want to create a linear or radial gradient as background or border, check our [CSS Gradient Generator](#).

Hey! You found this booklet interesting? Support Converting Colors with the new Membership Option!

The pro membership hides all ads, plus gives you double the colors in the color bucket, and more awesome pro features!

[Learn more, Memberships starting at \\$2.50/m!](#)

**Follow me
on Twitter!**

@ConvertingColor