

Converting Colors

HunterLab(77.9444, 1.7496,
8.1103)

Have a look what the booklet for
HunterLab(77.9444, 1.7496, 8.1103)
contains.

HunterLab(77.7880, 1.8588, 8.1596)	3
<i>Conversions</i>	4
<i>Details</i>	6
<i>Harmonies</i>	12
<i>Previews</i>	24
<i>Color Blindness Simulation</i>	28
<i>CSS Examples</i>	31

Color

**HunterLab(77.7880, 1.8588,
8.1596)**

Conversions

Conversions Part 1

Format	Color
Hex	DCC8C4
RGB	220, 200, 196
RGB Percent	86%, 78%, 77%
CMY	0.1373, 0.2157, 0.2314
CMYK	0.00, 0.09, 0.11, 0.14
HSL	10°, 26%, 82%
HSV	10°, 11%, 86%
XYZ	60.1333, 60.5097, 60.7347
YIQ	205.5240, 13.2040, 2.9960

Conversions

Conversions Part 2

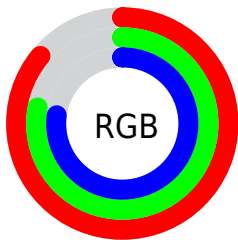
Format	Color
R _Y B	220, 201, 196
Decimal	14469316
CIE Lab	82.12, 6.33, 4.53
CIE LCh	82, 7.780, 35.601
Yxy	60.5124, 0.3315, 0.3336
Android (android.graphics.Color)	4292659396 (0xFFDCC8C4)
YUV	205.5240, -4.6953, 12.6955
Hunter-Lab	77.7880, 1.8588, 8.1596

Details

The HunterLab color $77.7880, 1.8588, 8.1596$ is a light color, and the websafe version is hex $CCCCCC$. A complement of this color would be $81.2487, -9.8431, 0.4818$, and the grayscale version is $78.3755, -4.1819, 4.2583$.

A 20% lighter version of the original color is $99.9359, -5.6870, 6.3478$, and $55.2359, 2.4772, 6.6100$ is the 20% darker color. If you saturate the color by 10%, you get $71.8296, 8.0363, 11.3476$, and if you desaturate by 10%, it is $84.0206, -3.9971, 4.8962$.

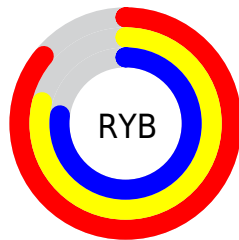
Distribution



Red (86%)

Green (78%)

Blue (77%)



Red (86%)

Yellow (79%)

Blue (77%)

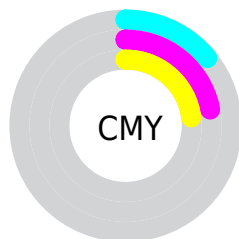


Cyan (0%)

Magenta (9%)

Yellow (11%)

Black (14%)



Cyan (14%)

Magenta (22%)

Yellow (23%)

Brightness & Saturation Gradients

These gradients show how the HunterLab color 77.7880, 1.8588, 8.1596 changes by changing the brightness by 10 percent. The first figure shows a shift by +10% for each color and the second figure -10%.

Similar to the brightness gradients but the following saturation gradients show a change of the HunterLab color 77.7880, 1.8588, 8.1596 by changing the saturation by 10% instead.

■ 77.7880, 1.8588,
8.1596

■ 77.7880, 1.8588,
8.1596

206.5149, -2.7655,
16.7486

■ 66.2056, 2.1704,
7.3134

102.7485, 1.0912,
9.9208

■ 55.2615, 2.4328,
6.4874

116.0694, 0.6460,
10.8333

■ 44.9972, 2.6383,
5.6822

129.9208, 0.1624,
11.7671

■ 35.4614, 2.7801,
4.8964

144.2831, -0.3574,
12.7222

■ 26.7144, 2.8483,
4.1274

159.1389, -0.9115,
13.6982

■ 18.8353, 2.8293,
3.3700

174.4722, -1.4985,

■ 11.9328, 2.7014,

14.6948

2.6133

190.2686, -2.1170,
15.7117

■ 4.8399, 5.4370,
3.3879

0.0000, NaN, NaN

■ 77.7880, 1.8588,
8.1596

■ 77.7880, 1.8588,
8.1596

■ 71.8296, 8.0363,
11.3476

■ 84.0206, -3.9971,
4.8962

■ 66.1817, 14.5656,
14.4229

■ 90.4885, -9.5573,
1.5752

■ 60.8960, 21.4466,
17.3367

■ 96.9291, -16.1806,
1.5739

■ 56.0324, 28.6407,
20.0158

■ 96.9308, -16.1833,
1.5759

■ 51.6606, 36.0404,
22.3594

■ 47.8568, 43.4368,
24.2402

■ 44.6974, 50.4957,
25.5206

■ 42.2446, 56.7702,
26.0959

■ 40.6454, 61.3567,
26.1197

Harmonies

Analogous

The Analogous color harmony consists of three colors that are next to each other on the color wheel.



77.7897, 3.2277, 4.9075



77.7880, 1.8588, 8.1596



77.7897, -1.1231, 10.2838

Triad

The Triadic color harmony groups three colors that are evenly spaced from another and form a triangle on the color wheel.



77.7897, 1.8566, 8.1608



77.7897, -10.6776, 7.0425



77.7897, -3.4426, -2.9820

Complementary

The Complementary color scheme is a pair of colors which are on the opposite of each other on the color wheel.



77.7880, 1.8588, 8.1596



81.2487, -9.8431, 0.4818

Split Complementary

Split-complementary colors differ from the complementary color scheme. The scheme consists of three colors, the original color and two neighbors of the complement color.



77.7897, -7.1409, -2.3438



77.7880, 1.8588, 8.1596



77.7897, -11.2720, 3.5550

Square

The Square scheme is like the rectangle color scheme, but the four colors are evenly spaced on the color wheel.



77.7897, 1.8566, 8.1608



77.7897, -8.3498, 9.6601



77.7897, -9.9891, 0.0918



77.7897, 0.1309, -1.6128

Rectangle

The Rectangle color scheme consists of four colors that form a rectangle on the color wheel.



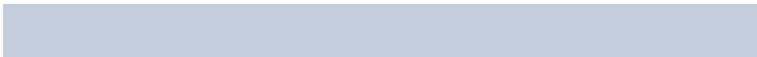
77.7880, 1.8588, 8.1596



77.7897, -3.5954, 10.8308



77.7897, -9.9891, 0.0918



77.7897, -4.7127, -2.9958

Sweetspot

The Sweet Spot groups the original color and five complimentary colors.



77.7897, 1.8566, 8.1608



97.7331, -3.2909, 6.6103



77.2362, 7.3170, -2.1506



44.9375, -1.2671, 3.2033

0.0000, NaN, NaN



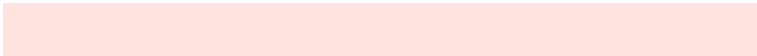
46.2646, -2.4686, 2.5136

Same Dimension

The Same Dimension uses a secret algorithm to generate beautiful new colors.



77.7897, 1.8566, 8.1608



90.3728, 3.7666, 10.4838



81.4180, -4.3100, 12.0625



36.6070, 0.4521, 3.5738



31.3132, 46.4413, 20.1081



8.6299, 9.8285, 5.4898

Inverse Universe

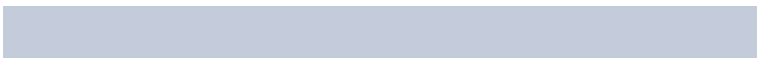
The Inverse Universe completely reimagines the original color for something new.



81.2487, -9.8431, 0.4818



95.2722, -12.8132, -0.3945



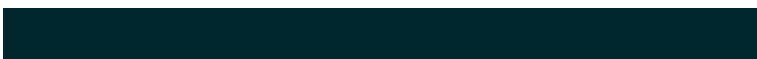
77.5175, -3.7639, -4.0892



38.0006, -4.2602, 0.4804



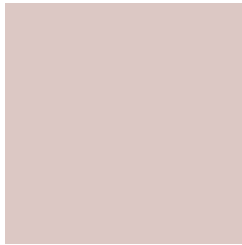
48.0857, -18.7184, -19.6953



12.6422, -5.2926, -4.3764

Previews

White Background



This preview shows how the HunterLab color 77.7880, 1.8588, 8.1596 looks on a white background.

Color Contrast Check

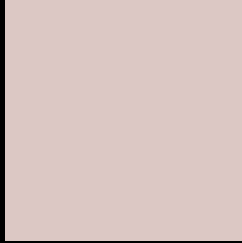
Large Text (above 18pt) WCAG AA × Fail

Any Text WCAG AA × Fail

Large Text (above 18pt) WCAG AAA × Fail

Any Text WCAG AAA × Fail

Black Background



This preview shows how the HunterLab color 77.7880, 1.8588, 8.1596 looks on a black background.

Color Contrast Check

Large Text (above 18pt) WCAG AA ✓ Pass

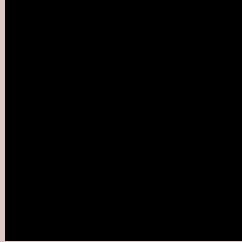
Any Text WCAG AA ✓ Pass

Large Text (above 18pt) WCAG AAA ✓ Pass

Any Text WCAG AAA ✓ Pass

If you want to check with other color combinations, try the [Color Contrast Checker](#).

HunterLab 77.7880, 1.8588, 8.1596 Background



This preview shows how black text looks on a background with the HunterLab color 77.7880, 1.8588, 8.1596.



This preview shows how white text looks on a background with the HunterLab color 77.7880, 1.8588,

8.1596.

Color Blindness Simulation

Color vision deficiency is a very complex topic, and I could not describe the different causes any better than Wikipedia does, so if you want to learn more, you should check out their [article about color blindness](#).

Dichromacy



Original Color

77.7880, 1.8588, 8.1596

Protanopia

77.6817, -3.0279, 7.0370

Deuteranopia

77.6202, 5.8435, 8.0399



Tritanopia

77.6313, 6.9352, -0.1205

Trichromacy



Original Color

77.7880, 1.8588, 8.1596

Protanomaly

77.7293, -1.3654, 7.5802

Deuteranomaly

77.6022, 4.2742, 7.9921

Tritanomaly

77.6307, 5.0395, 2.8390

Monochromacy



Original Color

77.7880, 1.8588, 8.1596

Achromatopsia

78.5625, -4.1919, 4.2684

Achromatomaly

78.2936, -2.2330, 5.8906

CSS Examples

Text

The CSS property to change the color of the text to HunterLab 77.7880, 1.8588, 8.1596 is called "color". The color property can be set on classes, ids or directly on the HTML element.

This example shows how text in the color `rgb(220, 200, 196)` looks like.

```
.text, #text, p{  
    color:rgb(220, 200, 196)  
}
```

If you want to add a text shadow in that color use the text-shadow property, you can generate a text shadow directly with our [CSS Text Shadow Generator](#).

Here you see how black text with a 4 pixel rgb(220, 200, 196) colored shadow looks like.

```
.shadow{ text-shadow: 4px 4px 2px rgb(220, 200, 196) }
```

Border

The CSS property to change the border of an element to HunterLab 77.7880, 1.8588, 8.1596 is called "border".

The border property can be set on classes, ids or directly on the HTML element.

This example shows the color as border, it can be applied via the CSS property "border" or "border-color".

```
.border, #border, table{ border:4px solid rgb(220, 200, 196) }
```


If only the border color should be changed use the property `border-color`.

```
.border{ border-color:rgb(220, 200, 196) }
```

If you want to add a box shadow in that color use:

Here you see how a box with a 4 pixel `rgb(220, 200, 196)` colored shadow looks like.

```
.boxshadow{ -moz-box-shadow:4px 4px 4px  
4px rgb(220, 200, 196); -webkit-box-  
shadow:4px 4px 4px 4px rgb(220, 200, 196);  
box-shadow:4px 4px 4px 4px rgb(220, 200,  
196) }
```

Background

The CSS property to change the background color of an element to HunterLab 77.7880, 1.8588, 8.1596 is called "background". The background property can be set on classes, ids or directly on the HTML element.

```
.background, #background, body{  
background: rgb(220, 200, 196) }
```

If only the background color should be changed can be used:

```
.background{ background-color: rgb(220,  
200, 196) }
```

This example shows the color as background, it is applied via the CSS property "background".

To optimize and compress your CSS code, you can use our [online CSS compressor and optimizer](#) based on csstidy. If you want to create a linear or radial gradient as background or border, check our [CSS Gradient Generator](#).

Hey! You found this booklet interesting? Support Converting Colors with the new Membership Option!

The pro membership hides all ads, plus gives you double the colors in the color bucket, and more awesome pro features!

[Learn more, Memberships starting at \\$2.50/m!](#)

**Follow me
on Twitter!**

@ConvertingColor