

Converting Colors

HunterLab(77.9836, 4.6996,
14.8098)

Have a look what the booklet for
HunterLab(77.9836, 4.6996,
14.8098) contains.

HunterLab(77.9187, 4.5055, 14.8276)	3
<i>Conversions</i>	4
<i>Details</i>	6
<i>Harmonies</i>	12
<i>Previews</i>	24
<i>Color Blindness Simulation</i>	28
<i>CSS Examples</i>	31

Color

**HunterLab(77.9187, 4.5055,
14.8276)**

Conversions

Conversions Part 1

Format	Color
Hex	E7C6B5
RGB	231, 198, 181
RGB Percent	91%, 78%, 71%
CMY	0.0941, 0.2235, 0.2902
CMYK	0.00, 0.14, 0.22, 0.09
HSL	20°, 51%, 81%
HSV	20°, 22%, 91%
XYZ	61.4895, 60.7132, 52.1940
YIQ	205.9290, 25.1250, 1.7090

Conversions

Conversions Part 2

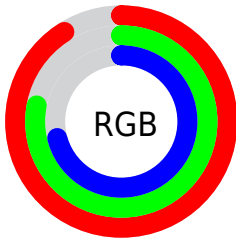
Format	Color
R _Y B	231, 207, 181
Decimal	15189685
CIE Lab	82.23, 9.06, 12.83
CIE LCh	82, 15.703, 54.784
Yxy	60.7160, 0.3526, 0.3481
Android (android.graphics.Color)	4293379765 (0xFFE7C6B5)
YUV	205.9290, -12.2900, 21.9873
Hunter-Lab	77.9187, 4.5055, 14.8276

Details

The HunterLab color **77.9187, 4.5055, 14.8276** is a light color, and the websafe version is hex **FFCCCC**. A complement of this color would be **79.8027, -10.9828, -7.1870**, and the grayscale version is **78.5769, -4.1927, 4.2692**.

A 20% lighter version of the original color is **99.4457, -8.3811, 13.3628**, and **55.3344, 4.9359, 12.3013** is the 20% darker color. If you saturate the color by 10%, you get **72.9541, 9.3544, 18.8648**, and if you desaturate by 10%, it is **83.1069, 0.0217, 10.4097**.

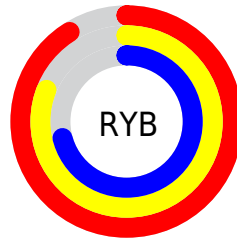
Distribution



Red (91%)

Green (78%)

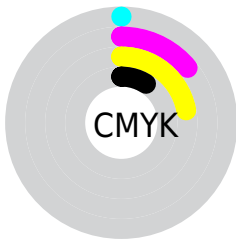
Blue (71%)



Red (91%)

Yellow (81%)

Blue (71%)

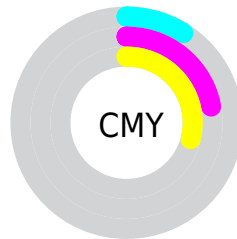


Cyan (0%)

Magenta (14%)

Yellow (22%)

Black (9%)



Cyan (9%)


Magenta (22%)


Yellow (29%)

Brightness & Saturation Gradients


These gradients show how the HunterLab color 77.9187, 4.5055, 14.8276 changes by changing the brightness by 10 percent. The first figure shows a shift by +10% for each color and the second figure -10%.


Similar to the brightness gradients but the following saturation gradients show a change of the HunterLab color 77.9187, 4.5055, 14.8276 by changing the saturation by 10% instead.


 77.9187, 4.5055,
14.8276

 77.9187, 4.5055,
14.8276


206.6959, 0.8333,
26.4581

 66.3295, 4.6889,
13.5564


 102.8920, 3.9764,
17.3693

 55.3781, 4.8167,
12.2763

116.2188, 3.6434,
18.6438

 45.1062, 4.8798,
10.9811


130.0759, 3.2682,
19.9242

 35.5620, 4.8695,
9.6602

144.4438, 2.8531,
21.2120

 26.8060, 4.7742,
8.2968

159.3049, 2.4002,
22.5084

 18.9168, 4.5771,
6.8629

174.6433, 1.9116,

 12.0028, 4.2526,

23.8145

5.5527

190.4447, 1.3888,
25.1308

■ 4.9640, 7.6835,
3.4748

0.0000, NaN, NaN

■ 77.9187, 4.5055,
14.8276

■ 77.9187, 4.5055,
14.8276

■ 72.9541, 9.3544,
18.8648

■ 83.1069, 0.0217,
10.4097

■ 68.2350, 14.5992,
22.4486

■ 88.4901, -4.1192,
5.6650

■ 63.7947, 20.2472,
25.4986

■ 94.0497, -7.9516,
0.6415

■ 59.6686, 26.2842,
27.9235

■ 97.8412, -12.9291,
2.7324

■ 55.8955, 32.6586,
29.6285

■ 52.5159, 39.2646,
30.5317

■ 49.5684, 45.9259,
30.5947

■ 47.4530, 51.3206,
30.1388

Harmonies

Analogous

The Analogous color harmony consists of three colors that are next to each other on the color wheel.



77.9205, 9.6471, 9.8819



77.9187, 4.5055, 14.8276



77.9205, -2.8201, 16.9287

Triad

The Triadic color harmony groups three colors that are evenly spaced from another and form a triangle on the color wheel.



77.9205, 4.5029, 14.8288



77.9205, -18.2755, 5.5028



77.9205, 2.1005, -9.5614

Complementary

The Complementary color scheme is a pair of colors which are on the opposite of each other on the color wheel.



77.9187, 4.5055, 14.8276



79.8027, -10.9828, -7.1870

Split Complementary

Split-complementary colors differ from the complementary color scheme. The scheme consists of three colors, the original color and two neighbors of the complement color.



77.9205, -5.4945, -11.0191



77.9187, 4.5055, 14.8276



77.9205, -17.0714, -1.8550

Square

The Square scheme is like the rectangle color scheme, but the four colors are evenly spaced on the color wheel.



77.9205, 4.5029, 14.8288



77.9205, -15.8184, 11.8864



77.9205, -12.4638, -8.0778



77.9205, 8.2230, -4.2664

Rectangle

The Rectangle color scheme consists of four colors that form a rectangle on the color wheel.



77.9187, 4.5055, 14.8276



77.9205, -7.8798, 16.5938



77.9205, -12.4638, -8.0778



77.9205, -0.3728, -10.5367

Sweetspot

The Sweet Spot groups the original color and five complimentary colors.



77.9205, 4.5029, 14.8288



96.3223, -2.6200, 8.7074



74.1009, 18.8539, -5.0911



44.3799, -1.0717, 4.1901

0.0000, NaN, NaN



46.2646, -2.4686, 2.5136

Same Dimension

The Same Dimension uses a secret algorithm to generate beautiful new colors.



77.9205, 4.5029, 14.8288



84.6363, 7.4244, 18.6757



85.3950, -8.1489, 22.1246



38.9425, -0.4225, 4.3417



35.8196, 37.6203, 22.7305



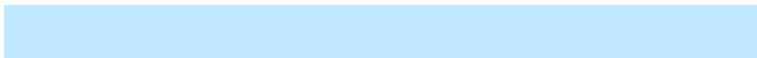
10.5616, 8.0696, 6.6493

Inverse Universe

The Inverse Universe completely reimagines the original color for something new.



79.8027, -10.9828, -7.1870



87.1599, -13.3793, -10.8831



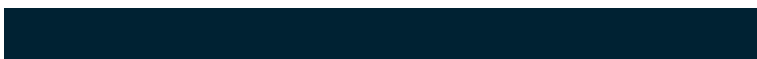
72.2030, 1.5806, -17.5620



39.3288, -3.5909, -0.1670



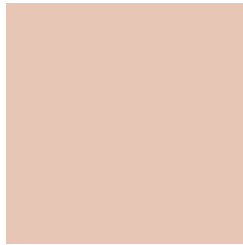
40.1781, -5.7130, -37.8864



11.6768, -2.7052, -8.7551

Previews

White Background



This preview shows how the HunterLab color 77.9187, 4.5055, 14.8276 looks on a white background.

Color Contrast Check

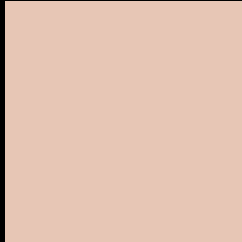
Large Text (above 18pt) WCAG AA × Fail

Any Text WCAG AA × Fail

Large Text (above 18pt) WCAG AAA × Fail

Any Text WCAG AAA × Fail

Black Background



This preview shows how the HunterLab color 77.9187, 4.5055, 14.8276 looks on a black background.

Color Contrast Check

Large Text (above 18pt) WCAG AA ✓ Pass

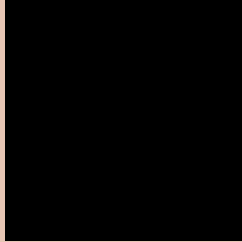
Any Text WCAG AA ✓ Pass

Large Text (above 18pt) WCAG AAA ✓ Pass

Any Text WCAG AAA ✓ Pass

If you want to check with other color combinations, try the [Color Contrast Checker](#).

HunterLab 77.9187, 4.5055, 14.8276 Background



This preview shows how black text looks on a background with the HunterLab color 77.9187, 4.5055, 14.8276.



This preview shows how white text looks on a background with the HunterLab color 77.9187, 4.5055,

Color Blindness Simulation

Color vision deficiency is a very complex topic, and I could not describe the different causes any better than Wikipedia does, so if you want to learn more, you should check out their [article about color blindness](#).

Dichromacy



Original Color

77.9187, 4.5055, 14.8276

Protanopia

77.9696, -4.3850, 13.4844

Deuteranopia

77.8411, 5.7483, 14.7683



Tritanopia

77.8970, 12.0130, 2.2973

Trichromacy



Original Color

77.9187, 4.5055, 14.8276

Protanomaly

78.0228, -1.1416, 14.0137

Deuteranomaly

77.7332, 5.3866, 14.6493

Tritanomaly

77.7672, 9.4949, 6.8912

Monochromacy



Original Color

77.9187, 4.5055, 14.8276

Achromatopsia

78.5625, -4.1919, 4.2684

Achromatomaly

78.2241, -1.2141, 8.1426

CSS Examples

Text

The CSS property to change the color of the text to HunterLab 77.9187, 4.5055, 14.8276 is called "color". The color property can be set on classes, ids or directly on the HTML element.

This example shows how text in the color `rgb(231, 198, 181)` looks like.

```
.text, #text, p{  
    color:rgb(231, 198, 181)  
}
```

If you want to add a text shadow in that color use the text-shadow property, you can generate a text shadow directly with our [CSS Text Shadow Generator](#).

Here you see how black text with a 4 pixel rgb(231, 198, 181) colored shadow looks like.

```
.shadow{ text-shadow: 4px 4px 2px rgb(231, 198, 181) }
```

Border

The CSS property to change the border of an element to HunterLab 77.9187, 4.5055, 14.8276 is called "border". The border property can be set on classes, ids or directly on the HTML element.

This example shows the color as border, it can be applied via the CSS property "border" or "border-color".

```
.border, #border, table{ border:4px solid rgb(231, 198, 181) }
```


If only the border color should be changed use the property `border-color`.

```
.border{ border-color:rgb(231, 198, 181) }
```

If you want to add a box shadow in that color use:

Here you see how a box with a 4 pixel `rgb(231, 198, 181)` colored shadow looks like.

```
.boxshadow{ -moz-box-shadow:4px 4px 4px  
4px rgb(231, 198, 181); -webkit-box-  
shadow:4px 4px 4px 4px rgb(231, 198, 181);  
box-shadow:4px 4px 4px 4px rgb(231, 198,  
181) }
```

Background

The CSS property to change the background color of an element to HunterLab 77.9187, 4.5055, 14.8276 is called "background". The background property can be set on classes, ids or directly on the HTML element.

```
.background, #background, body{  
background: rgb(231, 198, 181) }
```

If only the background color should be changed can be used:

```
.background{ background-color: rgb(231,  
198, 181) }
```

This example shows the color as background, it is applied via the CSS property "background".

To optimize and compress your CSS code, you can use our [online CSS compressor and optimizer](#) based on csstidy. If you want to create a linear or radial gradient as background or border, check our [CSS Gradient Generator](#).

Hey! You found this booklet interesting? Support Converting Colors with the new Membership Option!

The pro membership hides all ads, plus gives you double the colors in the color bucket, and more awesome pro features!

[Learn more, Memberships starting at \\$2.50/m!](#)

**Follow me
on Twitter!**

@ConvertingColor