

Converting Colors

HunterLab(78.0075, 1.6347,
16.0722)

Have a look what the booklet for
HunterLab(78.0075, 1.6347,
16.0722) contains.

HunterLab(78.0088, 1.6203, 16.0845)	3
<i>Conversions</i>	4
<i>Details</i>	6
<i>Harmonies</i>	12
<i>Previews</i>	24
<i>Color Blindness Simulation</i>	28
<i>CSS Examples</i>	31

Color

**HunterLab(78.0088, 1.6203,
16.0845)**

Conversions

Conversions Part 1

Format	Color
Hex	E3C8B2
RGB	227, 200, 178
RGB Percent	89%, 78%, 70%
CMY	0.1098, 0.2157, 0.3020
CMYK	0.00, 0.12, 0.22, 0.11
HSL	27°, 47%, 79%
HSV	27°, 22%, 89%
XYZ	60.3686, 60.8537, 50.6836
YIQ	205.5650, 23.1540, -1.1180

Conversions

Conversions Part 2

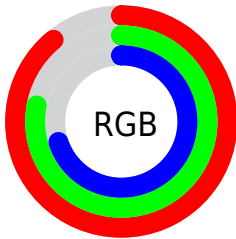
Format	Color
R _Y B	227, 218, 178
Decimal	14928050
CIE Lab	82.30, 6.08, 14.48
CIE LCh	82, 15.710, 67.212
Yxy	60.8565, 0.3512, 0.3540
Android (android.graphics.Color)	4293118130 (0xFFE3C8B2)
YUV	205.5650, -13.5895, 18.7985
Hunter-Lab	78.0088, 1.6203, 16.0845

Details

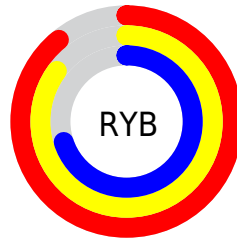
The HunterLab color $78.0088, 1.6203, 16.0845$ is a light color, and the websafe version is hex $FFCCCC$. A complement of this color would be $76.5977, -8.0761, -9.1946$, and the grayscale version is $78.4269, -4.1847, 4.2611$.

A 20% lighter version of the original color is $99.3582, -8.8632, 14.6183$, and $55.4043, 2.1930, 13.4155$ is the 20% darker color. If you saturate the color by 10%, you get $73.7974, 5.0895, 20.5418$, and if you desaturate by 10%, it is $82.3876, -1.4915, 11.1066$.

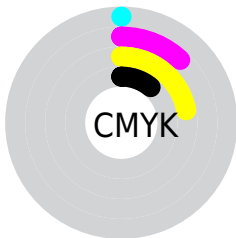
Distribution



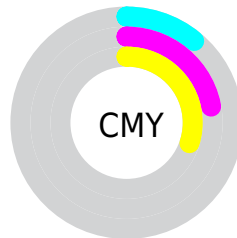
- Red (89%)
- Green (78%)
- Blue (70%)



- Red (89%)
- Yellow (85%)
- Blue (70%)



- Cyan (0%)
- Magenta (12%)
- Yellow (22%)
- Black (11%)





- Cyan (11%)
- Magenta (22%)
- Yellow (30%)

Brightness & Saturation Gradients

These gradients show how the HunterLab color 78.0088, 1.6203, 16.0845 changes by changing the brightness by 10 percent. The first figure shows a shift by +10% for each color and the second figure -10%.


Similar to the brightness gradients but the following saturation gradients show a change of the HunterLab color 78.0088, 1.6203, 16.0845 by changing the saturation by 10% instead.


 78.0088, 1.6203,
16.0845

 78.0088, 1.6203,
16.0845


206.8206, -3.0952,
28.3421

 66.4149, 1.9439,
14.7248


 102.9908, 0.8295,
18.7880

 55.4585, 2.2193,
13.3499


116.3217, 0.3735,
20.1374

 45.1813, 2.4388,
11.9522


130.1828, -0.1204,
21.4893

 35.6314, 2.5954,
10.5189

144.5544, -0.6502,
22.8456

 26.8692, 2.6799,
9.0302

159.4192, -1.2140,
24.2079

 18.9730, 2.6787,
7.4536

174.7612, -1.8103,

 12.0511, 2.5711,

25.5775

6.1224

190.5661, -2.4378,
26.9553

■ 5.0477, 4.9833,
3.5334

0.0000, NaN, NaN

■ 78.0088, 1.6203,
16.0845

■ 78.0088, 1.6203,
16.0845

■ 73.7974, 5.0895,
20.5418

■ 82.3876, -1.4915,
11.1066

■ 69.7645, 8.9476,
24.4090

■ 86.9139, -4.2656,
5.6638

■ 65.9297, 13.2099,
27.6160

■ 91.5768, -6.7322,
-0.1906

■ 62.3130, 17.8830,
30.0896

■ 95.8857, -11.5686,
0.3820

■ 58.9352, 22.9556,
31.7622

■ 97.5043, -14.1295,
2.3057

■ 55.8177, 28.3895,
32.5846

■ 52.9803, 34.1086,
32.5488

■ 50.8152, 39.0214,
31.9952

Harmonies

Analogous

The Analogous color harmony consists of three colors that are next to each other on the color wheel.



78.0106, 7.9075, 12.2497



78.0088, 1.6203, 16.0845



78.0106, -6.0061, 16.9015

Triad

The Triadic color harmony groups three colors that are evenly spaced from another and form a triangle on the color wheel.



78.0106, 1.6178, 16.0856



78.0106, -18.2413, 2.4677



78.0106, 4.9376, -7.7505

Complementary

The Complementary color scheme is a pair of colors which are on the opposite of each other on the color wheel.



78.0088, 1.6203, 16.0845



76.5977, -8.0761, -9.1946

Split Complementary

Split-complementary colors differ from the complementary color scheme. The scheme consists of three colors, the original color and two neighbors of the complement color.



78.0106, -2.3099, -10.9641



78.0088, 1.6203, 16.0845



78.0106, -15.5483, -4.7066

Square

The Square scheme is like the rectangle color scheme, but the four colors are evenly spaced on the color wheel.



78.0106, 1.6178, 16.0856



78.0106, -17.2806, 9.4782



78.0106, -9.7873, -9.7997



78.0106, 9.8752, -1.3751

Rectangle

The Rectangle color scheme consists of four colors that form a rectangle on the color wheel.



78.0088, 1.6203, 16.0845



78.0106, -10.7851, 15.7023



78.0106, -9.7873, -9.7997



78.0106, 2.6801, -9.2630

Sweetspot

The Sweet Spot groups the original color and five complimentary colors.



78.0106, 1.6178, 16.0856



96.8467, -3.5027, 9.2891



72.5377, 17.5360, -2.6028



44.6485, -1.5245, 4.4868

0.0000, NaN, NaN



46.2646, -2.4686, 2.5136

Same Dimension

The Same Dimension uses a secret algorithm to generate beautiful new colors.



78.0106, 1.6178, 16.0856



86.7813, 3.6077, 20.7613



85.2723, -10.4436, 23.0753



39.2790, -0.9935, 4.7074



39.0960, 29.0841, 24.5999



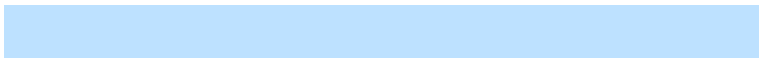
11.4575, 5.9623, 7.1644

Inverse Universe

The Inverse Universe completely reimagines the original color for something new.



76.5977, -8.0761, -9.1946



84.8372, -9.7076, -14.0120



69.4032, 4.0648, -19.2465



38.9833, -3.0276, -0.5857



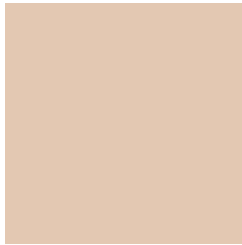
34.6896, 3.5405, -51.0020



10.3641, -0.6541, -11.5422

Previews

White Background



This preview shows how the HunterLab color 78.0088, 1.6203, 16.0845 looks on a white background.

Color Contrast Check

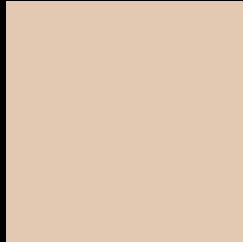
Large Text (above 18pt) WCAG AA × Fail

Any Text WCAG AA × Fail

Large Text (above 18pt) WCAG AAA × Fail

Any Text WCAG AAA × Fail

Black Background



This preview shows how the HunterLab color 78.0088, 1.6203, 16.0845 looks on a black background.

Color Contrast Check

Large Text (above 18pt) WCAG AA ✓ Pass

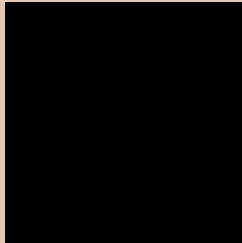
Any Text WCAG AA ✓ Pass

Large Text (above 18pt) WCAG AAA ✓ Pass

Any Text WCAG AAA ✓ Pass

If you want to check with other color combinations, try the [Color Contrast Checker](#).

HunterLab 78.0088, 1.6203, 16.0845 Background



This preview shows how black text looks on a background with the HunterLab color 78.0088, 1.6203, 16.0845.



This preview shows how white text looks on a background with the HunterLab color 78.0088, 1.6203,

Color Blindness Simulation

Color vision deficiency is a very complex topic, and I could not describe the different causes any better than Wikipedia does, so if you want to learn more, you should check out their [article about color blindness](#).

Dichromacy



Original Color

78.0088, 1.6203, 16.0845

Protanopia

77.9597, -4.6315, 15.1180

Deuteranopia

77.8971, 5.8314, 15.6413



Tritanopia

77.9245, 10.7578, 1.3145

Trichromacy



Original Color

78.0088, 1.6203, 16.0845

Protanomaly

78.1195, -2.5682, 15.7237

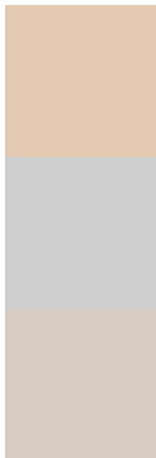
Deuteranomaly

77.8664, 4.2245, 15.5814

Tritanomaly

78.0250, 7.3730, 7.1490

Monochromacy



Original Color

78.0088, 1.6203, 16.0845

Achromatopsia

78.5625, -4.1919, 4.2684

Achromatomaly

78.4011, -2.2174, 8.7774

CSS Examples

Text

The CSS property to change the color of the text to HunterLab 78.0088, 1.6203, 16.0845 is called "color". The color property can be set on classes, ids or directly on the HTML element.

This example shows how text in the color `rgb(227, 200, 178)` looks like.

```
.text, #text, p{  
    color:rgb(227, 200, 178)  
}
```

If you want to add a text shadow in that color use the text-shadow property, you can generate a text shadow directly with our [CSS Text Shadow Generator](#).

Here you see how black text with a 4 pixel rgb(227, 200, 178) colored shadow looks like.

```
.shadow{ text-shadow: 4px 4px 2px rgb(227, 200, 178) }
```

Border

The CSS property to change the border of an element to HunterLab 78.0088, 1.6203, 16.0845 is called "border". The border property can be set on classes, ids or directly on the HTML element.

This example shows the color as border, it can be applied via the CSS property "border" or "border-color".

```
.border, #border, table{ border:4px solid rgb(227, 200, 178) }
```


If only the border color should be changed use the property border-color.

```
.border{ border-color:rgb(227, 200, 178) }
```

If you want to add a box shadow in that color use:

Here you see how a box with a 4 pixel rgb(227, 200, 178) colored shadow looks like.

```
.boxshadow{ -moz-box-shadow:4px 4px 4px  
4px rgb(227, 200, 178); -webkit-box-  
shadow:4px 4px 4px 4px rgb(227, 200, 178);  
box-shadow:4px 4px 4px 4px rgb(227, 200,  
178) }
```

Background

The CSS property to change the background color of an element to HunterLab 78.0088, 1.6203, 16.0845 is called "background". The background property can be set on classes, ids or directly on the HTML element.

```
.background, #background, body{  
background: rgb(227, 200, 178) }
```

If only the background color should be changed can be used:

```
.background{ background-color: rgb(227,  
200, 178) }
```

This example shows the color as background, it is applied via the CSS property "background".

To optimize and compress your CSS code, you can use our [online CSS compressor and optimizer](#) based on csstidy. If you want to create a linear or radial gradient as background or border, check our [CSS Gradient Generator](#).

Hey! You found this booklet interesting? Support Converting Colors with the new Membership Option!

The pro membership hides all ads, plus gives you double the colors in the color bucket, and more awesome pro features!

[Learn more, Memberships starting at \\$2.50/m!](#)

**Follow me
on Twitter!**

@ConvertingColor