

Converting Colors

HunterLab(78.0554, 3.5200,
16.5790)

Have a look what the booklet for
HunterLab(78.0554, 3.5200,
16.5790) contains.

HunterLab(78.1090, 3.4288, 16.6170)	3
<i>Conversions</i>	4
<i>Details</i>	6
<i>Harmonies</i>	12
<i>Previews</i>	24
<i>Color Blindness Simulation</i>	28
<i>CSS Examples</i>	31

Color

**HunterLab(78.1090, 3.4288,
16.6170)**

Conversions

Conversions Part 1

Format	Color
Hex	E7C7B1
RGB	231, 199, 177
RGB Percent	91%, 78%, 69%
CMY	0.0941, 0.2196, 0.3059
CMYK	0.00, 0.14, 0.23, 0.09
HSL	24°, 53%, 80%
HSV	24°, 23%, 91%
XYZ	61.3143, 61.0102, 50.1395
YIQ	206.0600, 26.1340, -0.0580

Conversions

Conversions Part 2

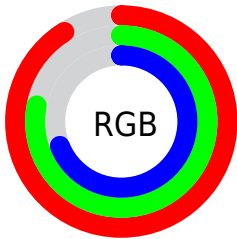
Format	Color
R_{YB}	231, 214, 177
Decimal	15189937
CIE _{Lab}	82.39, 7.95, 15.19
CIE _{LCh}	82, 17.143, 62.353
Yxy	61.0129, 0.3555, 0.3538
Android (android.graphics.Color)	4293380017 (0xFFE7C7B1)
YUV	206.0600, -14.3266, 21.8724
Hunter-Lab	78.1090, 3.4288, 16.6170

Details

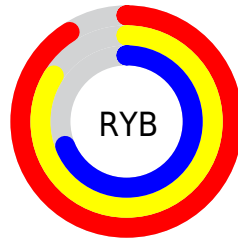
The HunterLab color $78.1090, 3.4288, 16.6170$ is a light color, and the websafe version is hex $FFCCCC$. A complement of this color would be $77.9204, -9.5531, -9.6786$, and the grayscale version is $78.6412, -4.1961, 4.2727$.

A 20% lighter version of the original color is $99.3293, -9.0223, 15.0326$, and $55.5158, 3.9452, 13.9124$ is the 20% darker color. If you saturate the color by 10%, you get $73.5869, 7.5364, 20.8783$, and if you desaturate by 10%, it is $82.8239, -0.3093, 11.8687$.

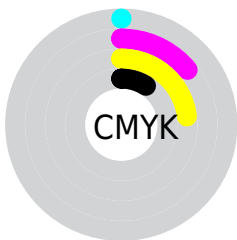
Distribution



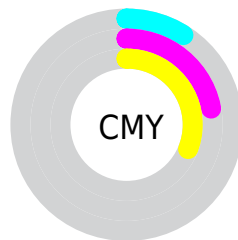
- Red (91%)
- Green (78%)
- Blue (69%)



- Red (91%)
- Yellow (84%)
- Blue (69%)



- Cyan (0%)
- Magenta (14%)
- Yellow (23%)
- Black (9%)



- Cyan (9%)
- Magenta (22%)
- Yellow (31%)

Brightness & Saturation Gradients

These gradients show how the HunterLab color 78.1090, 3.4288, 16.6170 changes by changing the brightness by 10 percent. The first figure shows a shift by +10% for each color and the second figure -10%.

Similar to the brightness gradients but the following saturation gradients show a change of the HunterLab color 78.1090, 3.4288, 16.6170 by changing the saturation by 10% instead.

78.1090, 3.4288,
16.6170

78.1090, 3.4288,
16.6170

206.9593, -0.6333,
29.1424

66.5099, 3.6645,
15.2196

103.1008, 2.8018,
19.3896

55.5480, 3.8475,
13.8042

116.4362, 2.4229,
20.7710

45.2648, 3.9690,
12.3628

130.3016, 2.0033,
22.1534

35.7086, 4.0211,
10.8816

144.6775, 1.5454,
23.5390

26.9394, 3.9929,
9.3397

159.5464, 1.0511,
24.9295

19.0356, 3.8689,
7.7027

174.8923, 0.5222,

12.1049, 3.6252,

26.3262

6.3609

190.7010, -0.0397,
27.7302

■ 5.1392, 6.4703,
3.5974

0.0000, NaN, NaN

■ 78.1090, 3.4288,
16.6170

■ 78.1090, 3.4288,
16.6170

■ 73.5869, 7.5364,
20.8783

■ 82.8239, -0.3093,
11.8687

■ 69.2730, 12.0450,
24.5786

■ 87.7081, -3.6985,
6.6917

■ 65.1923, 16.9664,
27.6410

■ 92.7474, -6.7713,
1.1400

■ 61.3705, 22.2987,
29.9836

■ 97.4353, -12.2853,
2.2546

■ 57.8351, 28.0140,
31.5293

■ 97.8412, -12.9291,
2.7324

■ 54.6143, 34.0466,
32.2213

■ 51.7341, 40.2794,
32.0525

■ 50.0178, 44.4032,
31.5981

Harmonies

Analogous

The Analogous color harmony consists of three colors that are next to each other on the color wheel.



78.1108, 9.8734, 11.9985



78.1090, 3.4288, 16.6170



78.1108, -4.8307, 18.0365

Triad

The Triadic color harmony groups three colors that are evenly spaced from another and form a triangle on the color wheel.



78.1108, 3.4262, 16.6181



78.1108, -19.5898, 3.6215



78.1108, 4.6156, -9.7971

Complementary

The Complementary color scheme is a pair of colors which are on the opposite of each other on the color wheel.



78.1090, 3.4288, 16.6170



77.9204, -9.5531, -9.6786

Split Complementary

Split-complementary colors differ from the complementary color scheme. The scheme consists of three colors, the original color and two neighbors of the complement color.



78.1108, -3.5111, -12.6177



78.1090, 3.4288, 16.6170



78.1108, -17.2901, -4.3798

Square

The Square scheme is like the rectangle color scheme, but the four colors are evenly spaced on the color wheel.



78.1108, 3.4262, 16.6181



78.1108, -17.9045, 11.0184



78.1108, -11.4904, -10.5393



78.1108, 10.5801, -3.1801

Rectangle

The Rectangle color scheme consists of four colors that form a rectangle on the color wheel.



78.1090, 3.4288, 16.6170



78.1108, -10.1905, 17.1107



78.1108, -11.4904, -10.5393



78.1108, 2.0345, -11.2503

Sweetspot

The Sweet Spot groups the original color and five complimentary colors.



78.1108, 3.4262, 16.6181



96.0936, -2.7918, 9.6580



72.8404, 20.1412, -4.0756



44.3034, -1.1863, 4.6322

0.0000, NaN, NaN



46.2646, -2.4686, 2.5136

Same Dimension

The Same Dimension uses a secret algorithm to generate beautiful new colors.



78.1108, 3.4262, 16.6181



84.9348, 5.9744, 20.9388



86.2201, -10.1496, 24.3470



39.1504, -0.7758, 4.5680



37.7557, 32.4560, 23.8331



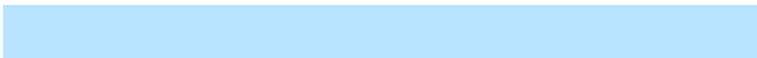
11.1003, 6.7766, 6.9586

Inverse Universe

The Inverse Universe completely reimagines the original color for something new.



77.9204, -9.5531, -9.6786



84.6771, -11.3920, -14.2652



69.8122, 4.0505, -21.1180



39.1149, -3.2427, -0.4258



36.7337, -0.0645, -45.7746



10.8565, -1.4497, -10.4402

Previews

White Background



This preview shows how the HunterLab color 78.1090, 3.4288, 16.6170 looks on a white background.

Color Contrast Check

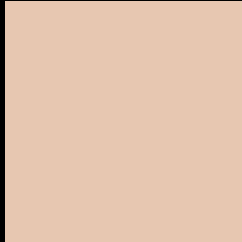
Large Text (above 18pt) WCAG AA × Fail

Any Text WCAG AA × Fail

Large Text (above 18pt) WCAG AAA × Fail

Any Text WCAG AAA × Fail

Black Background



This preview shows how the HunterLab color 78.1090, 3.4288, 16.6170 looks on a black background.

Color Contrast Check

Large Text (above 18pt) WCAG AA ✓ Pass

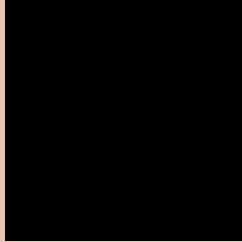
Any Text WCAG AA ✓ Pass

Large Text (above 18pt) WCAG AAA ✓ Pass

Any Text WCAG AAA ✓ Pass

If you want to check with other color combinations, try the [Color Contrast Checker](#).

HunterLab 78.1090, 3.4288, 16.6170 Background



This preview shows how black text looks on a background with the HunterLab color 78.1090, 3.4288, 16.6170.



This preview shows how white text looks on a background with the HunterLab color 78.1090, 3.4288,

Color Blindness Simulation

Color vision deficiency is a very complex topic, and I could not describe the different causes any better than Wikipedia does, so if you want to learn more, you should check out their [article about color blindness](#).

Dichromacy



Original Color

78.1090, 3.4288, 16.6170

Protanopia

78.3613, -4.7998, 15.5309

Deuteranopia

77.9545, 5.9204, 16.5029



Tritanopia

78.0059, 12.3689, 2.4347

Trichromacy



Original Color

78.1090, 3.4288, 16.6170

Protanomaly

78.3190, -1.8793, 15.9412

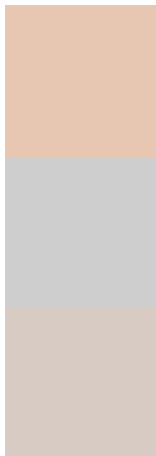
Deuteranomaly

78.1376, 5.0345, 16.6744

Tritanomaly

78.1047, 9.0097, 8.1868

Monochromacy



Original Color

78.1090, 3.4288, 16.6170

Achromatopsia

78.5625, -4.1919, 4.2684

Achromatomaly

78.1659, -1.5311, 8.9767

CSS Examples

Text

The CSS property to change the color of the text to HunterLab 78.1090, 3.4288, 16.6170 is called "color". The color property can be set on classes, ids or directly on the HTML element.

This example shows how text in the color `rgb(231, 199, 177)` looks like.

```
.text, #text, p{  
    color:rgb(231, 199, 177)  
}
```

If you want to add a text shadow in that color use the text-shadow property, you can generate a text shadow directly with our [CSS Text Shadow Generator](#).

Here you see how black text with a 4 pixel rgb(231, 199, 177) colored shadow looks like.

```
.shadow{ text-shadow: 4px 4px 2px rgb(231, 199, 177) }
```

Border

The CSS property to change the border of an element to HunterLab 78.1090, 3.4288, 16.6170 is called "border". The border property can be set on classes, ids or directly on the HTML element.

This example shows the color as border, it can be applied via the CSS property "border" or "border-color".

```
.border, #border, table{ border:4px solid rgb(231, 199, 177) }
```


If only the border color should be changed use the property `border-color`.

```
.border{ border-color:rgb(231, 199, 177) }
```

If you want to add a box shadow in that color use:

Here you see how a box with a 4 pixel `rgb(231, 199, 177)` colored shadow looks like.

```
.boxshadow{ -moz-box-shadow:4px 4px 4px  
4px rgb(231, 199, 177); -webkit-box-  
shadow:4px 4px 4px 4px rgb(231, 199, 177);  
box-shadow:4px 4px 4px 4px rgb(231, 199,  
177) }
```

Background

The CSS property to change the background color of an element to HunterLab 78.1090, 3.4288, 16.6170 is called "background". The background property can be set on classes, ids or directly on the HTML element.

```
.background, #background, body{  
background: rgb(231, 199, 177) }
```

If only the background color should be changed can be used:

```
.background{ background-color: rgb(231,  
199, 177) }
```

This example shows the color as background, it is applied via the CSS property "background".

To optimize and compress your CSS code, you can use our [online CSS compressor and optimizer](#) based on csstidy. If you want to create a linear or radial gradient as background or border, check our [CSS Gradient Generator](#).

Hey! You found this booklet interesting? Support Converting Colors with the new Membership Option!

The pro membership hides all ads, plus gives you double the colors in the color bucket, and more awesome pro features!

[Learn more, Memberships starting at \\$2.50/m!](#)

**Follow me
on Twitter!**

@ConvertingColor