

Converting Colors

HunterLab(78.1010, -0.5350,
11.6848)

Have a look what the booklet for
HunterLab(78.1010, -0.5350,
11.6848) contains.

HunterLab(78.0867, -0.5953, 11.5511)	3
<i>Conversions</i>	4
<i>Details</i>	6
<i>Harmonies</i>	12
<i>Previews</i>	24
<i>Color Blindness Simulation</i>	28
<i>CSS Examples</i>	31

Color

**HunterLab(78.0867, -0.5953,
11.5511)**

Conversions

Conversions Part 1

Format	Color
Hex	DBCABD
RGB	219, 202, 189
RGB Percent	86%, 79%, 74%
CMY	0.1412, 0.2078, 0.2588
CMYK	0.00, 0.08, 0.14, 0.14
HSL	26°, 29%, 80%
HSV	26°, 14%, 86%
XYZ	59.5193, 60.9753, 56.7766
YIQ	205.6010, 14.3050, -0.4390

Conversions

Conversions Part 2

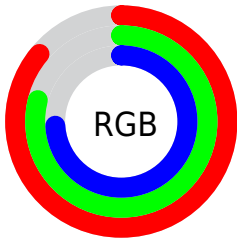
Format	Color
R _Y B	219, 212, 189
Decimal	14404285
CIE Lab	82.37, 3.78, 8.62
CIE LCh	82, 9.411, 66.330
Yxy	60.9780, 0.3358, 0.3440
Android (android.graphics.Color)	4292594365 (0xFFDBCABD)
YUV	205.6010, -8.1843, 11.7509
Hunter-Lab	78.0867, -0.5953, 11.5511

Details

The HunterLab color **78.0867, -0.5953, 11.5511** is a light color, and the websafe version is hex **CCCCCC**. A complement of this color would be **77.5079, -7.0316, -3.6291**, and the grayscale version is **78.4227, -4.1844, 4.2609**.

A 20% lighter version of the original color is **99.6858, -7.0598, 9.9225**, and **55.5427, 0.3171, 9.3667** is the 20% darker color. If you saturate the color by 10%, you get **73.8290, 2.6264, 16.1398**, and if you desaturate by 10%, it is **82.4989, -3.4960, 6.5300**.

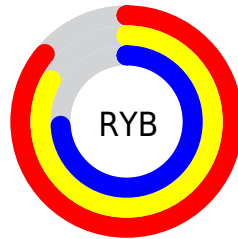
Distribution



Red (86%)

Green (79%)

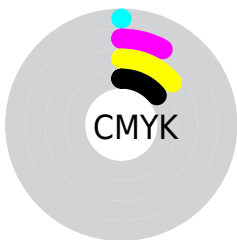
Blue (74%)



Red (86%)

Yellow (83%)

Blue (74%)

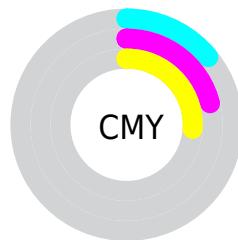


Cyan (0%)

Magenta (8%)

Yellow (14%)

Black (14%)



Cyan (14%)

Magenta (21%)

Yellow (26%)

Brightness & Saturation Gradients

These gradients show how the HunterLab color 78.0867, -0.5953, 11.5511 changes by changing the brightness by 10 percent. The first figure shows a shift by +10% for each color and the second figure -10%.

Similar to the brightness gradients but the following saturation gradients show a change of the HunterLab color 78.0867, -0.5953, 11.5511 by changing the saturation by 10% instead.

■ 78.0867, -0.5953,
11.5511

■ 78.0867, -0.5953,
11.5511

206.9284, -6.1285,
21.6195

■ 66.4887, -0.1611,
10.4994

■ 103.0762, -1.5916,
13.6906

■ 55.5280, 0.2308,
9.4543

116.4107, -2.1442,
14.7789

■ 45.2462, 0.5739,
8.4132

130.2751, -2.7311,
15.8812

■ 35.6914, 0.8629,
7.3705

144.6501, -3.3506,
16.9982

■ 26.9238, 1.0907,
6.3170

159.5180, -4.0014,
18.1303

■ 19.0217, 1.2468,
5.2371

174.8631, -4.6820,

■ 12.0929, 1.3153,

19.2778

4.1107

190.6709, -5.3914,
20.4408

■ 5.1189, 2.9427,
3.5832

0.0000, NaN, NaN

■ 78.0867, -0.5953,
11.5511

■ 78.0867, -0.5953,
11.5511

■ 73.8290, 2.6264,
16.1398

■ 82.4989, -3.4960,
6.5300

■ 69.7357, 6.2017,
20.2346

■ 87.0469, -6.0960,
1.1235

■ 65.8258, 10.1505,
23.7717

■ 91.7206, -8.4240,
-4.6235

■ 62.1183, 14.4875,
26.6807

■ 95.7450, -14.7552,
0.1535

■ 58.6341, 19.2143,
28.8895

■ 96.8505, -16.4719,
1.4734

■ 55.3953, 24.3122,
30.3322

■ 52.4242, 29.7320,
30.9633

■ 49.7414, 35.3832,
30.7831

■ 48.1998, 38.9703,
30.3827

Harmonies

Analogous

The Analogous color harmony consists of three colors that are next to each other on the color wheel.



78.0884, 3.0638, 9.0604



78.0867, -0.5953, 11.5511



78.0884, -5.1410, 12.1396

Triad

The Triadic color harmony groups three colors that are evenly spaced from another and form a triangle on the color wheel.



78.0884, -0.5975, 11.5523



78.0884, -12.7465, 3.3197



78.0884, 1.1244, -2.8167

Complementary

The Complementary color scheme is a pair of colors which are on the opposite of each other on the color wheel.



78.0867, -0.5953, 11.5511



77.5079, -7.0316, -3.6291

Split Complementary

Split-complementary colors differ from the complementary color scheme. The scheme consists of three colors, the original color and two neighbors of the complement color.



78.0884, -3.1958, -4.5584



78.0867, -0.5953, 11.5511



78.0884, -11.1513, -0.8861

Square

The Square scheme is like the rectangle color scheme, but the four colors are evenly spaced on the color wheel.



78.0884, -0.5975, 11.5523



78.0884, -12.0870, 7.5451



78.0884, -7.6809, -3.8323



78.0884, 4.0739, 0.8059

Rectangle

The Rectangle color scheme consists of four colors that form a rectangle on the color wheel.



78.0867, -0.5953, 11.5511



78.0884, -8.0451, 11.4038



78.0884, -7.6809, -3.8323



78.0884, -0.2195, -3.6508

Sweetspot

The Sweet Spot groups the original color and five complimentary colors.



78.0884, -0.5975, 11.5523



97.8410, -4.0439, 7.9668



74.7746, 8.9191, -0.0691



45.0793, -1.7555, 3.9024

0.0000, NaN, NaN



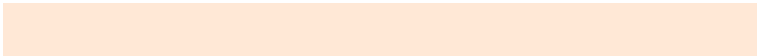
46.2646, -2.4686, 2.5136

Same Dimension

The Same Dimension uses a secret algorithm to generate beautiful new colors.



78.0884, -0.5975, 11.5523



91.5282, 0.1874, 15.1052



82.6804, -8.2210, 16.2786



37.3835, -0.8752, 4.4236



37.3957, 29.3043, 23.5561



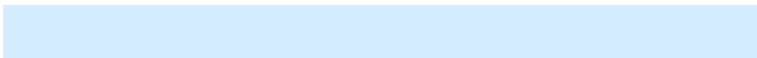
10.3691, 5.4474, 6.4848

Inverse Universe

The Inverse Universe completely reimagines the original color for something new.



77.5079, -7.0316, -3.6291



90.7176, -8.7912, -6.0866



72.9355, 0.6151, -9.5267



37.1958, -2.9573, -0.4873



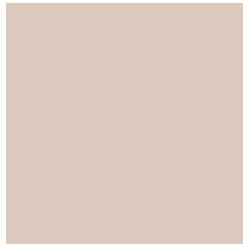
34.3689, 2.0296, -47.3395



9.6717, -1.0415, -9.8406

Previews

White Background



This preview shows how the HunterLab color 78.0867, -0.5953, 11.5511 looks on a white background.

Color Contrast Check

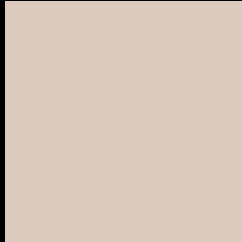
Large Text (above 18pt) WCAG AA × Fail

Any Text WCAG AA × Fail

Large Text (above 18pt) WCAG AAA × Fail

Any Text WCAG AAA × Fail

Black Background



This preview shows how the HunterLab color 78.0867, -0.5953, 11.5511 looks on a black background.

Color Contrast Check

Large Text (above 18pt) WCAG AA ✓ Pass

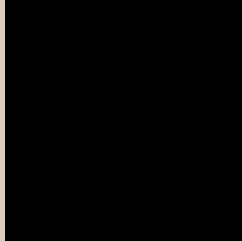
Any Text WCAG AA ✓ Pass

Large Text (above 18pt) WCAG AAA ✓ Pass

Any Text WCAG AAA ✓ Pass

If you want to check with other color combinations, try the [Color Contrast Checker](#).

HunterLab 78.0867, -0.5953, 11.5511 Background



This preview shows how black text looks on a background with the HunterLab color 78.0867, -0.5953, 11.5511.



This preview shows how white text looks on a background with the HunterLab color 78.0867, -0.5953, 11.5511.

Color Blindness Simulation

Color vision deficiency is a very complex topic, and I could not describe the different causes any better than Wikipedia does, so if you want to learn more, you should check out their [article about color blindness](#).

Dichromacy



Original Color

78.0867, -0.5953, 11.5511

Protanopia

78.0388, -3.8149, 11.0089

Deuteranopia

78.0569, 5.4592, 11.1911



Tritanopia

77.9569, 6.5823, -0.2329

Trichromacy



Original Color

78.0867, -0.5953, 11.5511

Protanomaly

78.0235, -2.3071, 11.0187

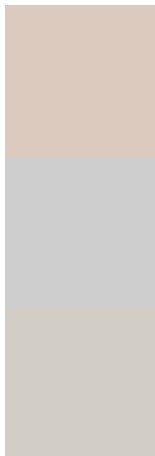
Deuteranomaly

77.9316, 3.5256, 11.0205

Tritanomaly

77.8632, 4.1807, 4.0718

Monochromacy



Original Color

78.0867, -0.5953, 11.5511

Achromatopsia

78.5625, -4.1919, 4.2684

Achromatomaly

78.5377, -3.0719, 7.0890

CSS Examples

Text

The CSS property to change the color of the text to HunterLab 78.0867, -0.5953, 11.5511 is called "color". The color property can be set on classes, ids or directly on the HTML element.

This example shows how text in the color `rgb(219, 202, 189)` looks like.

```
.text, #text, p{  
    color:rgb(219, 202, 189)  
}
```

If you want to add a text shadow in that color use the text-shadow property, you can generate a text shadow directly with our [CSS Text Shadow Generator](#).

Here you see how black text with a 4 pixel rgb(219, 202, 189) colored shadow looks like.

```
.shadow{ text-shadow: 4px 4px 2px rgb(219, 202, 189) }
```

Border

The CSS property to change the border of an element to HunterLab 78.0867, -0.5953, 11.5511 is called "border". The border property can be set on classes, ids or directly on the HTML element.

This example shows the color as border, it can be applied via the CSS property "border" or "border-color".

```
.border, #border, table{ border:4px solid rgb(219, 202, 189) }
```


If only the border color should be changed use the property `border-color`.

```
.border{ border-color:rgb(219, 202, 189) }
```

If you want to add a box shadow in that color use:

Here you see how a box with a 4 pixel `rgb(219, 202, 189)` colored shadow looks like.

```
.boxshadow{ -moz-box-shadow:4px 4px 4px  
4px rgb(219, 202, 189); -webkit-box-  
shadow:4px 4px 4px 4px rgb(219, 202, 189);  
box-shadow:4px 4px 4px 4px rgb(219, 202,  
189) }
```

Background

The CSS property to change the background color of an element to HunterLab 78.0867, -0.5953, 11.5511 is called "background". The background property can be set on classes, ids or directly on the HTML element.

```
.background, #background, body{  
background: rgb(219, 202, 189) }
```

If only the background color should be changed can be used:

```
.background{ background-color: rgb(219,  
202, 189) }
```

This example shows the color as background, it is applied via the CSS property "background".

To optimize and compress your CSS code, you can use our [online CSS compressor and optimizer](#) based on csstidy. If you want to create a linear or radial gradient as background or border, check our [CSS Gradient Generator](#).

Hey! You found this booklet interesting? Support Converting Colors with the new Membership Option!

The pro membership hides all ads, plus gives you double the colors in the color bucket, and more awesome pro features!

[Learn more, Memberships starting at \\$2.50/m!](#)

**Follow me
on Twitter!**

@ConvertingColor