

Converting Colors

HunterLab(78.1040, -0.1091,
10.7949)

Have a look what the booklet for
HunterLab(78.1040, -0.1091,
10.7949) contains.

| | |
|---|----|
| HunterLab(78.1426, -0.2912, 10.7475) | 3 |
| <i>Conversions</i> | 4 |
| <i>Details</i> | 6 |
| <i>Harmonies</i> | 12 |
| <i>Previews</i> | 24 |
| <i>Color Blindness Simulation</i> | 28 |
| <i>CSS Examples</i> | 31 |

Color

**HunterLab(78.1426, -0.2912,
10.7475)**

Conversions

Conversions Part 1

| Format | Color |
|---------------|---------------------------|
| Hex | DBCABF |
| RGB | 219, 202, 191 |
| RGB Percent | 86%, 79%, 75% |
| CMY | 0.1412, 0.2078, 0.2510 |
| CMYK | 0.00, 0.08, 0.13, 0.14 |
| HSL | 24°, 28%, 80% |
| HSV | 24°, 13%, 86% |
| XYZ | 59.7379, 61.0627, 57.9280 |
| YIQ | 205.8290, 13.6630, 0.1830 |

Conversions

Conversions Part 2

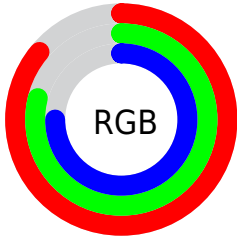
| Format | Color |
|-------------------------------------|-------------------------------|
| RYP | 219, 209, 191 |
| Decimal | 14404287 |
| CIELab | 82.41, 4.10, 7.62 |
| CIElCh | 82, 8.652, 61.721 |
| Yxy | 61.0654, 0.3342, 0.3417 |
| Android (android.graphics.Color) | 4292594367 (0xFFDBCABF) |
| YUV | 205.8290, -7.3107, 11.5510 |
| Hunter-Lab | 78.1426, -0.2912, 10.7475 |

Details

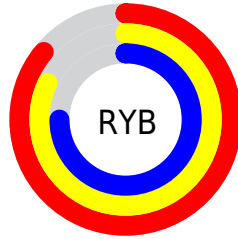
The HunterLab color $78.1426, -0.2912, 10.7475$ is a light color, and the websafe version is hex `CCCCCC`. A complement of this color would be $78.2952, -7.4590, -2.6359$, and the grayscale version is $78.5169, -4.1895, 4.2660$.

A 20% lighter version of the original color is $99.7474, -6.7215, 9.0414$, and $55.5943, 0.5969, 8.6243$ is the 20% darker color. If you saturate the color by 10%, you get $73.6206, 3.3534, 15.1536$, and if you desaturate by 10%, it is $82.8326, -3.6183, 5.9656$.

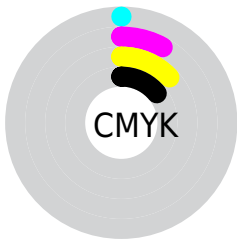
Distribution



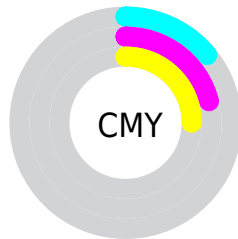
- Red (86%)
- Green (79%)
- Blue (75%)



- Red (86%)
- Yellow (82%)
- Blue (75%)



- Cyan (0%)
- Magenta (8%)
- Yellow (13%)
- Black (14%)



- Cyan (14%)
- Magenta (21%)
- Yellow (25%)

Brightness & Saturation Gradients

These gradients show how the HunterLab color 78.1426, -0.2912, 10.7475 changes by changing the brightness by 10 percent. The first figure shows a shift by +10% for each color and the second figure -10%.

Similar to the brightness gradients but the following saturation gradients show a change of the HunterLab color 78.1426, -0.2912, 10.7475 by changing the saturation by 10% instead.

■ 78.1426, -0.2912,
10.7475

■ 78.1426, -0.2912,
10.7475

207.0057, -5.7120,
20.4519

■ 66.5417, 0.1279,
9.7466

■ 103.1376, -1.2592,
12.7936

■ 55.5779, 0.5037,
8.7558

116.4745, -1.7985,
13.8386

■ 45.2928, 0.8298,
7.7733

130.3414, -2.3726,
14.8995

■ 35.7344, 1.1007,
6.7946

144.7187, -2.9798,
15.9767

■ 26.9630, 1.3087,
5.8122

159.5889, -3.6186,
17.0704

■ 19.0566, 1.4431,
4.8133

174.9362, -4.2877,

■ 12.1230, 1.4874,

18.1808

3.7729

190.7462, -4.9858,
19.3080

■ 5.1694, 3.1789,
3.6186

0.0000, NaN, NaN

■ 78.1426, -0.2912,
10.7475

■ 78.1426, -0.2912,
10.7475

■ 73.6206, 3.3534,
15.1536

■ 82.8326, -3.6183,
5.9656

■ 69.2793, 7.3492,
19.1237

■ 87.6698, -6.6496,
0.8525

■ 65.1409, 11.7162,
22.5933

■ 92.5830, -9.7437,
-3.7080

■ 61.2285, 16.4677,
25.4888

■ 96.8505, -16.4719,
1.4734

■ 57.5677, 21.6007,
27.7318

■ 54.1864, 27.0866,
29.2462

■ 51.1129, 32.8596,
29.9729

■ 48.3742, 38.8029,
29.8959

■ 46.6118, 43.0677,
29.4759

Harmonies

Analogous

The Analogous color harmony consists of three colors that are next to each other on the color wheel.



78.1443, 2.8467, 8.2031



78.1426, -0.2912, 10.7475



78.1443, -4.4173, 11.5803

Triad

The Triadic color harmony groups three colors that are evenly spaced from another and form a triangle on the color wheel.



78.1443, -0.2934, 10.7487



78.1443, -12.1178, 4.0215



78.1443, 0.1373, -2.5991

Complementary

The Complementary color scheme is a pair of colors which are on the opposite of each other on the color wheel.



78.1426, -0.2912, 10.7475



78.2952, -7.4590, -2.6359

Split Complementary

Split-complementary colors differ from the complementary color scheme. The scheme consists of three colors, the original color and two neighbors of the complement color.



78.1443, -3.9300, -3.8593



78.1426, -0.2912, 10.7475



78.1443, -10.9549, 0.0866

Square

The Square scheme is like the rectangle color scheme, but the four colors are evenly spaced on the color wheel.



78.1443, -0.2934, 10.7487



78.1443, -11.1900, 7.8218



78.1443, -7.9799, -2.8518



78.1443, 3.0991, 0.5088

Rectangle

The Rectangle color scheme consists of four colors that form a rectangle on the color wheel.



78.1426, -0.2912, 10.7475



78.1443, -7.1533, 11.0881



78.1443, -7.9799, -2.8518



78.1443, -1.1489, -3.2600

Sweetspot

The Sweet Spot groups the original color and five complimentary colors.



78.1443, -0.2934, 10.7487



97.7105, -3.8253, 7.8204



75.4253, 8.2563, -0.4233



45.0077, -1.6354, 3.8225

0.0000, NaN, NaN



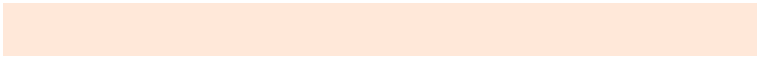
46.2646, -2.4686, 2.5136

Same Dimension

The Same Dimension uses a secret algorithm to generate beautiful new colors.



78.1443, -0.2934, 10.7487



91.5683, 0.6313, 14.0401



82.3392, -7.2895, 15.1164



37.2650, -0.6743, 4.2949



36.1689, 32.4379, 22.8550



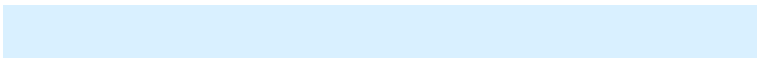
10.0618, 6.1490, 6.3077

Inverse Universe

The Inverse Universe completely reimagines the original color for something new.



78.2952, -7.4590, -2.6359



91.7794, -9.4158, -4.7279



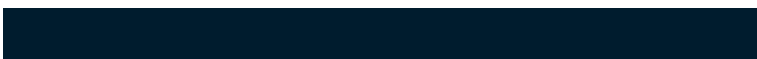
74.0905, -0.4667, -7.9845



37.3173, -3.1557, -0.3399



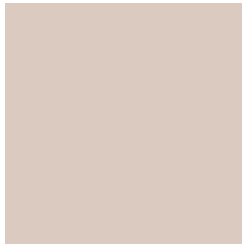
36.3147, -1.3267, -42.5262



10.1015, -1.7186, -8.9160

Previews

White Background



This preview shows how the HunterLab color 78.1426, -0.2912, 10.7475 looks on a white background.

Color Contrast Check

Large Text (above 18pt) WCAG AA × Fail

Any Text WCAG AA × Fail

Large Text (above 18pt) WCAG AAA × Fail

Any Text WCAG AAA × Fail

Black Background



This preview shows how the HunterLab color 78.1426, -0.2912, 10.7475 looks on a black background.

Color Contrast Check

Large Text (above 18pt) WCAG AA ✓ Pass

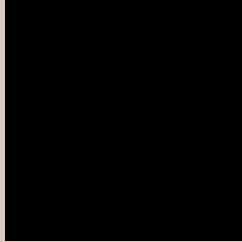
Any Text WCAG AA ✓ Pass

Large Text (above 18pt) WCAG AAA ✓ Pass

Any Text WCAG AAA ✓ Pass

If you want to check with other color combinations, try the [Color Contrast Checker](#).

HunterLab 78.1426, -0.2912, 10.7475 Background



This preview shows how black text looks on a background with the HunterLab color 78.1426, -0.2912, 10.7475.



This preview shows how white text looks on a background with the HunterLab color 78.1426, -0.2912, 10.7475.

Color Blindness Simulation

Color vision deficiency is a very complex topic, and I could not describe the different causes any better than Wikipedia does, so if you want to learn more, you should check out their [article about color blindness](#).

Dichromacy



Original Color

78.1426, -0.2912, 10.7475

Protanopia

78.0952, -3.5063, 10.1997

Deuteranopia

78.1133, 5.7611, 10.3820



Tritanopia

78.2505, 6.0549, 0.1204

Trichromacy



Original Color

78.1426, -0.2912, 10.7475

Protanomaly

78.0799, -1.9995, 10.2093

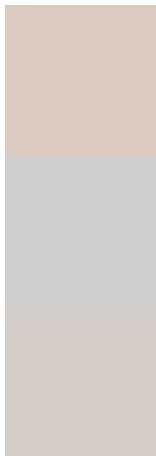
Deuteranomaly

77.9881, 3.8294, 10.2101

Tritanomaly

78.1901, 3.8249, 3.9695

Monochromacy



Original Color

78.1426, -0.2912, 10.7475

Achromatopsia

78.5625, -4.1919, 4.2684

Achromatomaly

78.5675, -2.9088, 6.6620

CSS Examples

Text

The CSS property to change the color of the text to HunterLab 78.1426, -0.2912, 10.7475 is called "color". The color property can be set on classes, ids or directly on the HTML element.

This example shows how text in the color `rgb(219, 202, 191)` looks like.

```
.text, #text, p{  
    color:rgb(219, 202, 191)  
}
```

If you want to add a text shadow in that color use the text-shadow property, you can generate a text shadow directly with our [CSS Text Shadow Generator](#).

Here you see how black text with a 4 pixel rgb(219, 202, 191) colored shadow looks like.

```
.shadow{ text-shadow: 4px 4px 2px rgb(219, 202, 191) }
```

Border

The CSS property to change the border of an element to HunterLab 78.1426, -0.2912, 10.7475 is called "border". The border property can be set on classes, ids or directly on the HTML element.

This example shows the color as border, it can be applied via the CSS property "border" or "border-color".

```
.border, #border, table{ border:4px solid rgb(219, 202, 191) }
```


If only the border color should be changed use the property `border-color`.

```
.border{ border-color:rgb(219, 202, 191) }
```

If you want to add a box shadow in that color use:

Here you see how a box with a 4 pixel `rgb(219, 202, 191)` colored shadow looks like.

```
.boxshadow{ -moz-box-shadow:4px 4px 4px  
4px rgb(219, 202, 191); -webkit-box-  
shadow:4px 4px 4px 4px rgb(219, 202, 191);  
box-shadow:4px 4px 4px 4px rgb(219, 202,  
191) }
```

Background

The CSS property to change the background color of an element to HunterLab 78.1426, -0.2912, 10.7475 is called "background". The background property can be set on classes, ids or directly on the HTML element.

```
.background, #background, body{  
background: rgb(219, 202, 191) }
```

If only the background color should be changed can be used:

```
.background{ background-color: rgb(219,  
202, 191) }
```

This example shows the color as background, it is applied via the CSS property "background".

To optimize and compress your CSS code, you can use our [online CSS compressor and optimizer](#) based on csstidy. If you want to create a linear or radial gradient as background or border, check our [CSS Gradient Generator](#).

Hey! You found this booklet interesting? Support Converting Colors with the new Membership Option!

The pro membership hides all ads, plus gives you double the colors in the color bucket, and more awesome pro features!

[Learn more, Memberships starting at \\$2.50/m!](#)

**Follow me
on Twitter!**

@ConvertingColor