

# Converting Colors

HunterLab(78.1283, 2.1654,  
12.3967)

Have a look what the booklet for  
HunterLab(78.1283, 2.1654,  
12.3967) contains.

<b>HunterLab(78.0410, 2.2083, 12.4095)</b> .....	3
<b><i>Conversions</i></b> .....	4
<b><i>Details</i></b> .....	6
<b><i>Harmonies</i></b> .....	12
<b><i>Previews</i></b> .....	24
<b><i>Color Blindness Simulation</i></b> .....	28
<b><i>CSS Examples</i></b> .....	31

# Color

**HunterLab(78.0410, 2.2083,  
12.4095)**

# Conversions

## Conversions Part 1

Format	Color
Hex	E1C8BB
RGB	225, 200, 187
RGB Percent	88%, 78%, 73%
CMY	0.1176, 0.2157, 0.2667
CMYK	0.00, 0.11, 0.17, 0.12
HSL	21°, 39%, 81%
HSV	21°, 17%, 88%
XYZ	60.6753, 60.9040, 55.5714
YIQ	205.9930, 19.0730, 1.2570

# Conversions

## Conversions Part 2

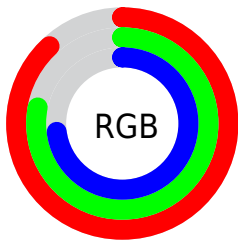
<b>Format</b>	<b>Color</b>
R <sub>Y</sub> B	225, 207, 187
Decimal	14796987
CIE Lab	82.33, 6.69, 9.70
CIE LCh	82, 11.786, 55.386
Yxy	60.9067, 0.3425, 0.3438
Android (android.graphics.Color)	4292987067 (0xFFE1C8BB)
YUV	205.9930, -9.3635, 16.6691
Hunter-Lab	78.0410, 2.2083, 12.4095

# Details

The HunterLab color  $78.0410, 2.2083, 12.4095$  is a light color, and the websafe version is hex `CCCCCC`. A complement of this color would be  $79.4270, -9.4890, -4.3982$ , and the grayscale version is  $78.5941, -4.1936, 4.2702$ .

A 20% lighter version of the original color is  $99.6248, -7.3950, 10.7952$ , and  $55.4202, 2.6809, 10.0675$  is the 20% darker color. If you saturate the color by 10%, you get  $73.1369, 6.7080, 16.5189$ , and if you desaturate by 10%, it is  $83.1492, -1.9513, 7.9569$ .

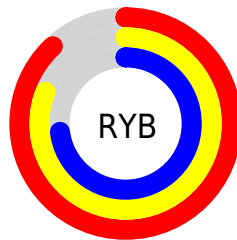
# Distribution



Red (88%)

Green (78%)

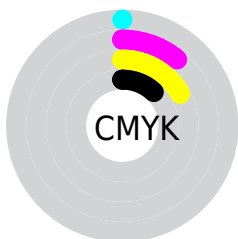
Blue (73%)



Red (88%)

Yellow (81%)

Blue (73%)

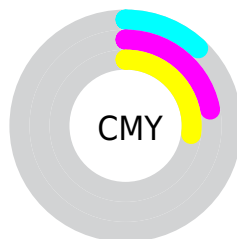


Cyan (0%)

Magenta (11%)

Yellow (17%)

Black (12%)



Cyan (12%)

Magenta (22%)

Yellow (27%)

# Brightness & Saturation Gradients

These gradients show how the HunterLab color 78.0410, 2.2083, 12.4095 changes by changing the brightness by 10 percent. The first figure shows a shift by +10% for each color and the second figure -10%.

Similar to the brightness gradients but the following saturation gradients show a change of the HunterLab color 78.0410, 2.2083, 12.4095 by changing the saturation by 10% instead.



■ 78.0410, 2.2083,  
12.4095

■ 78.0410, 2.2083,  
12.4095

206.8651, -2.2933,  
22.8746

■ 66.4454, 2.5033,  
11.3023

■ 103.0261, 1.4713,  
14.6509

■ 55.4873, 2.7484,  
10.1977

116.3585, 1.0405,  
15.7864

■ 45.2081, 2.9358,  
9.0925

130.2209, 0.5709,  
16.9340

■ 35.6562, 3.0581,  
7.9797

144.5940, 0.0646,  
18.0944

■ 26.8917, 3.1055,  
6.8482

159.4601, -0.4765,  
19.2683

■ 18.9931, 3.0640,  
5.6794

174.8033, -1.0507,

■ 12.0684, 2.9114,

20.4560

4.4787

190.6094, -1.6568,  
21.6581

■ 5.0773, 5.4747,  
3.5541

0.0000, NaN, NaN

■ 78.0410, 2.2083,  
12.4095

■ 78.0410, 2.2083,  
12.4095

■ 73.1369, 6.7080,  
16.5189

■ 83.1492, -1.9513,  
7.9569

■ 68.4561, 11.5812,  
20.2200

■ 88.4355, -5.7937,  
3.2079

■ 64.0284, 16.8424,  
23.4411

■ 93.8837, -9.3522,  
-1.7950

■ 59.8858, 22.4909,  
26.0980

■ 97.3384, -14.7224,  
2.0950

■ 56.0641, 28.4971,  
28.1000

■ 52.6016, 34.7879,  
29.3598

■ 49.5365, 41.2300,  
29.8155

■ 46.9022, 47.6131,  
29.4803

■ 46.1686, 49.5191,  
29.3158

# Harmonies

## Analogous

The Analogous color harmony consists of three colors that are next to each other on the color wheel.



78.0427, 6.0639, 8.6201



78.0410, 2.2083, 12.4095



78.0427, -3.2779, 14.0129

# Triad

The Triadic color harmony groups three colors that are evenly spaced from another and form a triangle on the color wheel.



78.0427, 2.2059, 12.4107



78.0427, -14.8763, 5.0886



78.0427, 0.6240, -5.8539

# Complementary

The Complementary color scheme is a pair of colors which are on the opposite of each other on the color wheel.



78.0410, 2.2083, 12.4095



79.4270, -9.4890, -4.3982

# Split Complementary

Split-complementary colors differ from the complementary color scheme. The scheme consists of three colors, the original color and two neighbors of the complement color.



78.0427, -5.0549, -6.9683



78.0410, 2.2083, 12.4095



78.0427, -13.8992, -0.3925

# Square

The Square scheme is like the rectangle color scheme, but the four colors are evenly spaced on the color wheel.



78.0427, 2.2059, 12.4107



78.0427, -13.0528, 9.9843



78.0427, -10.3444, -4.9041



78.0427, 5.1323, -1.9596



# Rectangle

The Rectangle color scheme consists of four colors that form a rectangle on the color wheel.



78.0410, 2.2083, 12.4095



78.0427, -7.0776, 13.7154



78.0427, -10.3444, -4.9041



78.0427, -1.2158, -6.5774

# Sweetspot

The Sweet Spot groups the original color and five complimentary colors.



78.0427, 2.2059, 12.4107



96.9387, -3.0959, 8.1794



75.0462, 13.1606, -2.9113



44.6511, -1.2834, 3.9597

0.0000, NaN, NaN



46.2646, -2.4686, 2.5136

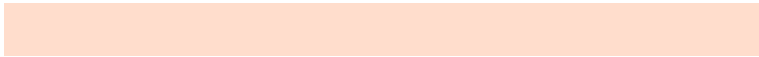


# Same Dimension

The Same Dimension uses a secret algorithm to generate beautiful new colors.



78.0427, 2.2059, 12.4107



88.0751, 4.1835, 15.8883



83.7170, -7.3451, 18.1608



38.0310, -0.4278, 4.2408



35.3248, 36.8196, 22.4116



10.1360, 7.5200, 6.3774

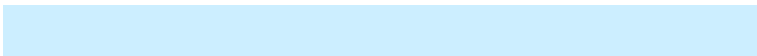


# Inverse Universe

The Inverse Universe completely reimagines the original color for something new.



79.4270, -9.4890, -4.3982



89.9683, -11.8272, -7.1165



73.6813, 0.0092, -11.9190



38.3942, -3.4919, -0.1651



39.4496, -5.4795, -37.4800

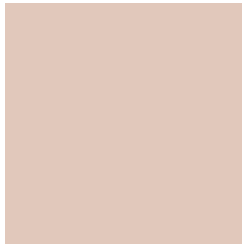


11.1496, -2.6084, -8.3054



# Previews

## White Background



This preview shows how the HunterLab color 78.0410, 2.2083, 12.4095 looks on a white background.

## Color Contrast Check

Large Text (above 18pt) WCAG AA × Fail

Any Text WCAG AA × Fail

Large Text (above 18pt) WCAG AAA × Fail

Any Text WCAG AAA × Fail



# Black Background



This preview shows how the HunterLab color 78.0410, 2.2083, 12.4095 looks on a black background.

## Color Contrast Check

Large Text (above 18pt) WCAG AA ✓ Pass

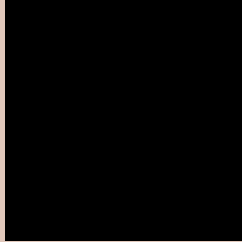
Any Text WCAG AA ✓ Pass

Large Text (above 18pt) WCAG AAA ✓ Pass

Any Text WCAG AAA ✓ Pass

If you want to check with other color combinations, try the [Color Contrast Checker](#).

## HunterLab 78.0410, 2.2083, 12.4095 Background



This preview shows how black text looks on a background with the HunterLab color 78.0410, 2.2083, 12.4095.



This preview shows how white text looks on a background with the HunterLab color 78.0410, 2.2083,



# Color Blindness Simulation

Color vision deficiency is a very complex topic, and I could not describe the different causes any better than Wikipedia does, so if you want to learn more, you should check out their [article about color blindness](#).

## Dichromacy



### Original Color

78.0410, 2.2083, 12.4095

### Protanopia

78.0108, -3.9678, 11.4098

### Deuteranopia

78.0801, 5.3705, 12.5068



## Tritanopia

77.9277, 9.3500, 0.7921

# Trichromacy



## Original Color

78.0410, 2.2083, 12.4095

## Protanomaly

78.1629, -1.9370, 12.0405

## Deuteranomaly

78.1618, 4.1366, 12.5729

## Tritanomaly

77.8301, 6.9649, 5.0395

# Monochromacy



## Original Color

78.0410, 2.2083, 12.4095

## Achromatopsia

78.5625, -4.1919, 4.2684

## Achromatomaly

78.3935, -2.0678, 7.4038

# CSS Examples

## Text

The CSS property to change the color of the text to HunterLab 78.0410, 2.2083, 12.4095 is called "color". The color property can be set on classes, ids or directly on the HTML element.

This example shows how text in the color `rgb(225, 200, 187)` looks like.

```
.text, #text, p{  
    color:rgb(225, 200, 187)  
}
```

If you want to add a text shadow in that color use the text-shadow property, you can generate a text shadow directly with our [CSS Text Shadow Generator](#).

Here you see how black text with a 4 pixel rgb(225, 200, 187) colored shadow looks like.

```
.shadow{ text-shadow: 4px 4px 2px rgb(225, 200, 187) }
```

## Border

The CSS property to change the border of an element to HunterLab 78.0410, 2.2083, 12.4095 is called "border". The border property can be set on classes, ids or directly on the HTML element.

This example shows the color as border, it can be applied via the CSS property "border" or "border-color".

```
.border, #border, table{ border:4px solid rgb(225, 200, 187) }
```



If only the border color should be changed use the property border-color.

```
.border{ border-color:rgb(225, 200, 187) }
```

If you want to add a box shadow in that color use:

Here you see how a box with a 4 pixel rgb(225, 200, 187) colored shadow looks like.

```
.boxshadow{ -moz-box-shadow:4px 4px 4px  
4px rgb(225, 200, 187); -webkit-box-  
shadow:4px 4px 4px 4px rgb(225, 200, 187);  
box-shadow:4px 4px 4px 4px rgb(225, 200,  
187) }
```

# Background

The CSS property to change the background color of an element to HunterLab 78.0410, 2.2083, 12.4095 is called "background". The background property can be set on classes, ids or directly on the HTML element.

```
.background, #background, body{  
background: rgb(225, 200, 187) }
```

If only the background color should be changed can be used:

```
.background{ background-color: rgb(225,  
200, 187) }
```

This example shows the color as background, it is applied via the CSS property "background".

To optimize and compress your CSS code, you can use our [online CSS compressor and optimizer](#) based on csstidy. If you want to create a linear or radial gradient as background or border, check our [CSS Gradient Generator](#).

Hey! You found this booklet interesting? Support Converting Colors with the new Membership Option!

The pro membership hides all ads, plus gives you double the colors in the color bucket, and more awesome pro features!

**[Learn more, Memberships starting at \\$2.50/m!](#)**

**Follow me  
on Twitter!**

@ConvertingColor