

Converting Colors

HunterLab(78.1579, -0.0104,
8.9944)

Have a look what the booklet for
HunterLab(78.1579, -0.0104, 8.9944)
contains.

HunterLab(78.1579, -0.0104, 8.9944)	3
<i>Conversions</i>	4
<i>Details</i>	6
<i>Harmonies</i>	12
<i>Previews</i>	24
<i>Color Blindness Simulation</i>	28
<i>CSS Examples</i>	31

Color

**HunterLab(78.1579, -0.0104,
8.9944)**

Conversions

Conversions Part 1

Format	Color
Hex	DACAC3
RGB	218, 202, 195
RGB Percent	85%, 79%, 76%
CMY	0.1451, 0.2078, 0.2353
CMYK	0.00, 0.07, 0.11, 0.15
HSL	18°, 24%, 81%
HSV	18°, 11%, 85%
XYZ	59.8842, 61.0866, 60.2644
YIQ	205.9860, 11.7830, 1.2150

Conversions

Conversions Part 2

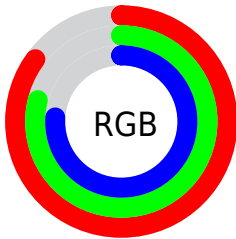
Format	Color
RYB	218, 205, 195
Decimal	14338755
CIELab	82.43, 4.39, 5.49
CIELCh	82, 7.032, 51.339
Yxy	61.0893, 0.3304, 0.3371
Android (android.graphics.Color)	4292528835 (0xFFDACAC3)
YUV	205.9860, -5.4161, 10.5363
Hunter-Lab	78.1579, -0.0104, 8.9944

Details

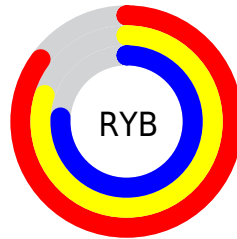
The HunterLab color $78.1579, -0.0104, 8.9944$ is a light color, and the websafe version is hex `CCCCCC`. A complement of this color would be $79.5307, -7.9824, -0.5823$, and the grayscale version is $78.5768, -4.1927, 4.2692$.

A 20% lighter version of the original color is $99.9041, -5.8614, 6.8020$, and $55.5783, 0.7006, 7.3771$ is the 20% darker color. If you saturate the color by 10%, you get $73.0786, 4.5322, 12.9515$, and if you desaturate by 10%, it is $83.4366, -4.2435, 4.7873$.

Distribution



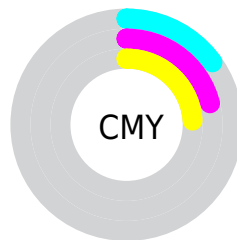
- Red (85%)
- Green (79%)
- Blue (76%)



- Red (85%)
- Yellow (80%)
- Blue (76%)



- Cyan (0%)
- Magenta (7%)
- Yellow (11%)
- Black (15%)



- Cyan (15%)
- Magenta (21%)
- Yellow (24%)

Brightness & Saturation Gradients

These gradients show how the HunterLab color 78.1579, -0.0104, 8.9944 changes by changing the brightness by 10 percent. The first figure shows a shift by +10% for each color and the second figure -10%.

Similar to the brightness gradients but the following saturation gradients show a change of the HunterLab color 78.1579, -0.0104, 8.9944 by changing the saturation by 10% instead.

■ 78.1579, -0.0104,
8.9944

■ 78.1579, -0.0104,
8.9944

207.0269, -5.3272,
17.9320

■ 66.5562, 0.3947,
8.1001

103.1543, -0.9522,
10.8444

■ 55.5916, 0.7558,
7.2230

116.4920, -1.4792,
11.7982

■ 45.3056, 1.0662,
6.3628

130.3595, -2.0415,
12.7718

■ 35.7462, 1.3201,
5.5175

144.7375, -2.6374,
13.7650

■ 26.9737, 1.5099,
4.6828

159.6084, -3.2651,
14.7779

■ 19.0661, 1.6243,
3.8516

174.9562, -3.9235,

■ 12.1312, 1.6461,

15.8101

3.0087

190.7668, -4.6112,
16.8615

■ 5.1832, 3.4163,
3.6282

0.0000, NaN, NaN

■ 78.1579, -0.0104,
8.9944

■ 78.1579, -0.0104,
8.9944

■ 73.0786, 4.5322,
12.9515

■ 83.4366, -4.2435,
4.7873

■ 68.2182, 9.4189,
16.6055

■ 88.8888, -8.1912,
0.3659

■ 63.6071, 14.6683,
19.8960

■ 94.3117, -12.9241,
-1.5879

■ 59.2789, 20.2862,
22.7480

■ 96.7706, -16.7592,
1.3714

■ 55.2719, 26.2520,
25.0735

■ 51.6283, 32.5033,
26.7773

■ 48.3927, 38.9180,
27.7706

■ 45.6076, 45.2979,
27.9989

■ 43.4134, 51.0125,
27.6442

Harmonies

Analogous

The Analogous color harmony consists of three colors that are next to each other on the color wheel.



78.1596, 2.0625, 6.5027



78.1579, -0.0104, 8.9944



78.1596, -3.1792, 10.2049

Triad

The Triadic color harmony groups three colors that are evenly spaced from another and form a triangle on the color wheel.



78.1596, -0.0126, 8.9956



78.1596, -10.5870, 5.1931



78.1596, -1.7607, -1.8165

Complementary

The Complementary color scheme is a pair of colors which are on the opposite of each other on the color wheel.



78.1579, -0.0104, 8.9944



79.5307, -7.9824, -0.5823

Split Complementary

Split-complementary colors differ from the complementary color scheme. The scheme consists of three colors, the original color and two neighbors of the complement color.



78.1596, -5.1650, -2.2041



78.1579, -0.0104, 8.9944



78.1596, -10.2220, 1.9373

Square

The Square scheme is like the rectangle color scheme, but the four colors are evenly spaced on the color wheel.



78.1596, -0.0126, 8.9956



78.1596, -9.2571, 8.0724



78.1596, -8.2513, -0.8037



78.1596, 1.0412, 0.2336

Rectangle

The Rectangle color scheme consists of four colors that form a rectangle on the color wheel.



78.1579, -0.0104, 8.9944



78.1596, -5.4668, 10.1580



78.1596, -8.2513, -0.8037



78.1596, -2.8739, -2.1489

Sweetspot

The Sweet Spot groups the original color and five complimentary colors.



78.1596, -0.0126, 8.9956



98.0659, -3.8496, 6.9874



76.5798, 6.3049, -0.4669



45.1322, -1.5947, 3.4230

0.0000, NaN, NaN



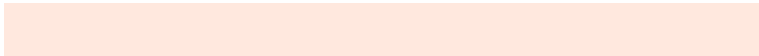
46.2646, -2.4686, 2.5136

Same Dimension

The Same Dimension uses a secret algorithm to generate beautiful new colors.



78.1596, -0.0126, 8.9956



91.7650, 1.3400, 11.9860



81.6310, -5.8389, 12.6982



37.0066, -0.2344, 4.0131



33.8501, 38.7730, 21.5370



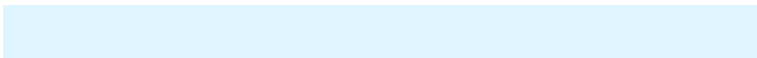
9.4445, 7.6440, 5.9535

Inverse Universe

The Inverse Universe completely reimagines the original color for something new.



79.5307, -7.9824, -0.5823



93.7941, -10.4602, -2.1920



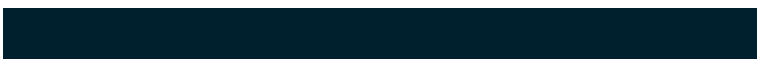
76.0187, -2.1889, -4.9295



37.5838, -3.5886, -0.0183



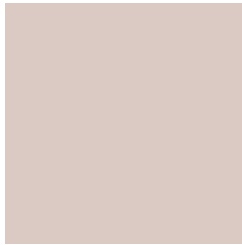
40.7547, -8.3820, -32.8455



11.0694, -3.1557, -7.0235

Previews

White Background



This preview shows how the HunterLab color 78.1579, -0.0104, 8.9944 looks on a white background.

Color Contrast Check

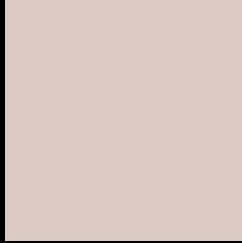
Large Text (above 18pt) WCAG AA × Fail

Any Text WCAG AA × Fail

Large Text (above 18pt) WCAG AAA × Fail

Any Text WCAG AAA × Fail

Black Background



This preview shows how the HunterLab color 78.1579, -0.0104, 8.9944 looks on a black background.

Color Contrast Check

Large Text (above 18pt) WCAG AA ✓ Pass

Any Text WCAG AA ✓ Pass

Large Text (above 18pt) WCAG AAA ✓ Pass

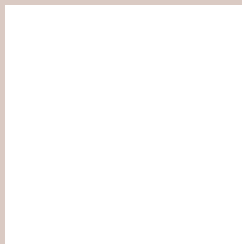
Any Text WCAG AAA ✓ Pass

If you want to check with other color combinations, try the [Color Contrast Checker](#).

HunterLab 78.1579, -0.0104, 8.9944 Background



This preview shows how black text looks on a background with the HunterLab color 78.1579, -0.0104, 8.9944.



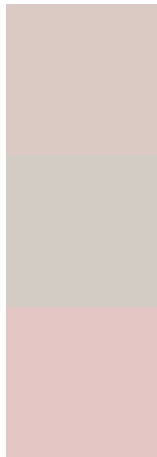
This preview shows how white text looks on a background with the HunterLab color 78.1579, -0.0104,

8.9944.

Color Blindness Simulation

Color vision deficiency is a very complex topic, and I could not describe the different causes any better than Wikipedia does, so if you want to learn more, you should check out their [article about color blindness](#).

Dichromacy



Original Color

78.1579, -0.0104, 8.9944

Protanopia

78.1154, -3.2060, 8.4395

Deuteranopia

78.0177, 5.6709, 8.4851



Tritanopia

78.1827, 5.8932, -0.4755

Trichromacy



Original Color

78.1579, -0.0104, 8.9944

Protanomaly

78.0984, -1.7057, 8.4466

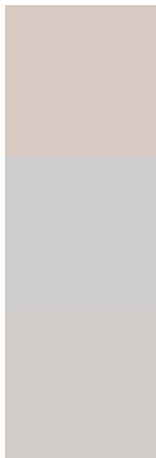
Deuteranomaly

77.8972, 3.7531, 8.3158

Tritanomaly

78.1526, 3.8234, 2.9525

Monochromacy



Original Color

78.1579, -0.0104, 8.9944

Achromatopsia

78.5625, -4.1919, 4.2684

Achromatomaly

78.5039, -3.0692, 6.1188

CSS Examples

Text

The CSS property to change the color of the text to HunterLab 78.1579, -0.0104, 8.9944 is called "color". The color property can be set on classes, ids or directly on the HTML element.

This example shows how text in the color `rgb(218, 202, 195)` looks like.

```
.text, #text, p{  
    color:rgb(218, 202, 195)  
}
```

If you want to add a text shadow in that color use the text-shadow property, you can generate a text shadow directly with our [CSS Text Shadow Generator](#).

Here you see how black text with a 4 pixel rgb(218, 202, 195) colored shadow looks like.

```
.shadow{ text-shadow: 4px 4px 2px rgb(218, 202, 195) }
```

Border

The CSS property to change the border of an element to HunterLab 78.1579, -0.0104, 8.9944 is called "border". The border property can be set on classes, ids or directly on the HTML element.

This example shows the color as border, it can be applied via the CSS property "border" or "border-color".

```
.border, #border, table{ border:4px solid rgb(218, 202, 195) }
```


If only the border color should be changed use the property `border-color`.

```
.border{ border-color:rgb(218, 202, 195) }
```

If you want to add a box shadow in that color use:

Here you see how a box with a 4 pixel `rgb(218, 202, 195)` colored shadow looks like.

```
.boxshadow{ -moz-box-shadow:4px 4px 4px  
4px rgb(218, 202, 195); -webkit-box-  
shadow:4px 4px 4px 4px rgb(218, 202, 195);  
box-shadow:4px 4px 4px 4px rgb(218, 202,  
195) }
```

Background

The CSS property to change the background color of an element to HunterLab 78.1579, -0.0104, 8.9944 is called "background". The background property can be set on classes, ids or directly on the HTML element.

```
.background, #background, body{  
background: rgb(218, 202, 195) }
```

If only the background color should be changed can be used:

```
.background{ background-color: rgb(218,  
202, 195) }
```

This example shows the color as background, it is applied via the CSS property "background".

To optimize and compress your CSS code, you can use our [online CSS compressor and optimizer](#) based on csstidy. If you want to create a linear or radial gradient as background or border, check our [CSS Gradient Generator](#).

Hey! You found this booklet interesting? Support Converting Colors with the new Membership Option!

The pro membership hides all ads, plus gives you double the colors in the color bucket, and more awesome pro features!

[Learn more, Memberships starting at \\$2.50/m!](#)

**Follow me
on Twitter!**

@ConvertingColor