

Converting Colors

HunterLab(78.2342, 2.1415,
6.3674)

Have a look what the booklet for
HunterLab(78.2342, 2.1415, 6.3674)
contains.

HunterLab(78.2342, 2.1415, 6.3674)	3
<i>Conversions</i>	4
<i>Details</i>	6
<i>Harmonies</i>	12
<i>Previews</i>	24
<i>Color Blindness Simulation</i>	28
<i>CSS Examples</i>	31

Color

**HunterLab(78.2342, 2.1415,
6.3674)**

Conversions

Conversions Part 1

Format	Color
Hex	DCC9C9
RGB	220, 201, 201
RGB Percent	86%, 79%, 79%
CMY	0.1373, 0.2117, 0.2118
CMYK	0.00, 0.09, 0.09, 0.14
HSL	0°, 21%, 83%
HSV	0°, 9%, 86%
XYZ	60.9444, 61.2059, 63.8601
YIQ	206.6810, 11.3240, 4.0280

Conversions

Conversions Part 2

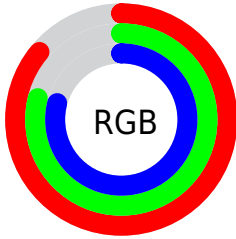
Format	Color
R _Y B	220, 201, 201
Decimal	14469577
CIE Lab	82.49, 6.63, 2.40
CIE LCh	82, 7.052, 19.884
Yxy	61.2086, 0.3276, 0.3291
Android (android.graphics.Color)	4292659657 (0xFFDCC9C9)
YUV	206.6810, -2.8007, 11.6808
Hunter-Lab	78.2342, 2.1415, 6.3674

Details

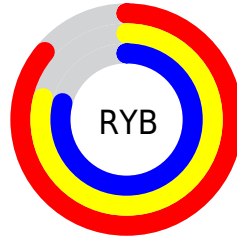
The HunterLab color $78.2342, 2.1415, 6.3674$ is a light color, and the websafe version is hex `CCCCCC`. A complement of this color would be $82.9276, -10.3812, 2.5073$, and the grayscale version is $78.8640, -4.2080, 4.2848$.

A 20% lighter version of the original color is $100.0000, -5.3358, 5.4332$, and $55.6537, 2.7301, 4.9340$ is the 20% darker color. If you saturate the color by 10%, you get $71.2141, 10.1619, 8.5523$, and if you desaturate by 10%, it is $85.6267, -5.5428, 4.3255$.

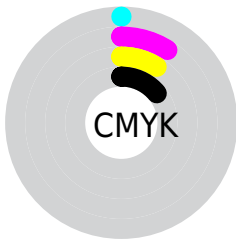
Distribution



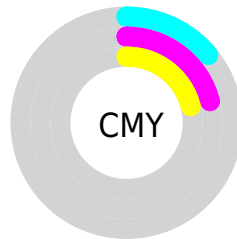
- Red (86%)
- Green (79%)
- Blue (79%)



- Red (86%)
- Yellow (79%)
- Blue (79%)



- Cyan (0%)
- Magenta (9%)
- Yellow (9%)
- Black (14%)



- Cyan (14%)
- Magenta (21%)
- Yellow (21%)

Brightness & Saturation Gradients

These gradients show how the HunterLab color 78.2342, 2.1415, 6.3674 changes by changing the brightness by 10 percent. The first figure shows a shift by +10% for each color and the second figure -10%.

Similar to the brightness gradients but the following saturation gradients show a change of the HunterLab color 78.2342, 2.1415, 6.3674 by changing the saturation by 10% instead.

■ 78.2342, 2.1415,
6.3674

■ 78.2342, 2.1415,
6.3674

207.1324, -2.3875,
14.2137

■ 66.6285, 2.4405,
5.6237

103.2380, 1.3976,
7.9395

■ 55.6597, 2.6897,
4.9066

116.5791, 0.9636,
8.7638

■ 45.3692, 2.8814,
4.2183

130.4500, 0.4909,
9.6132

■ 35.8050, 3.0084,
3.5593

144.8312, -0.0184,
10.4869

■ 27.0272, 3.0610,
2.9302

159.7051, -0.5624,
11.3843

■ 19.1138, 3.0252,
2.3306

175.0560, -1.1395,

■ 12.1722, 2.8793,

12.3050

1.7583

190.8695, -1.7483,
13.2482

■ 5.2511, 5.2226,
2.1792

0.0000, NaN, NaN

■ 78.2342, 2.1415,
6.3674

■ 78.2342, 2.1415,
6.3674

■ 71.2141, 10.1619,
8.5523

■ 85.6267, -5.5428,
4.3255

■ 64.6288, 18.5350,
10.8847

■ 93.3333, -12.9182,
2.4078

■ 58.5646, 27.2168,
13.3577

■ 96.9308, -16.1834,
1.5759

■ 53.1257, 36.0653,
15.9313

■ 48.4334, 44.7758,
18.5119

■ 44.6157, 52.8289,
20.9346

■ 41.7815, 59.5203,
22.9712

■ 39.9787, 64.1598,
24.3939

■ 39.1004, 66.5431,
25.1278

Harmonies

Analogous

The Analogous color harmony consists of three colors that are next to each other on the color wheel.



78.2359, 2.4403, 3.1453



78.2342, 2.1415, 6.3674



78.2359, 0.1292, 8.9194

Triad

The Triadic color harmony groups three colors that are evenly spaced from another and form a triangle on the color wheel.



78.2359, 2.1393, 6.3687



78.2359, -9.1732, 8.2055



78.2359, -5.3371, -2.1927

Complementary

The Complementary color scheme is a pair of colors which are on the opposite of each other on the color wheel.



78.2342, 2.1415, 6.3674



82.9276, -10.3812, 2.5073

Split Complementary

Split-complementary colors differ from the complementary color scheme. The scheme consists of three colors, the original color and two neighbors of the complement color.



78.2359, -8.3953, -0.7079



78.2342, 2.1415, 6.3674



78.2359, -10.5846, 5.3557

Square

The Square scheme is like the rectangle color scheme, but the four colors are evenly spaced on the color wheel.



78.2359, 2.1393, 6.3687



78.2359, -6.4158, 9.9477



78.2359, -10.3023, 2.0880



78.2359, -1.9161, -1.8927

Rectangle

The Rectangle color scheme consists of four colors that form a rectangle on the color wheel.



78.2342, 2.1415, 6.3674



78.2359, -1.8907, 9.9397



78.2359, -10.3023, 2.0880



78.2359, -6.4406, -1.8833

Sweetspot

The Sweet Spot groups the original color and five complimentary colors.



78.2359, 2.1393, 6.3687



97.3313, -2.6139, 6.1535



78.8397, 5.3942, -2.2455



44.7027, -0.8700, 2.9371

0.0000, NaN, NaN



46.2646, -2.4686, 2.5136

Same Dimension

The Same Dimension uses a secret algorithm to generate beautiful new colors.



78.2359, 2.1393, 6.3687



91.2489, 3.8752, 7.8909



81.1011, -2.7633, 9.5278



36.1275, 1.2859, 3.0409



29.8842, 51.1711, 19.3104



7.6074, 13.0211, 4.9156

Inverse Universe

The Inverse Universe completely reimagines the original color for something new.



82.9276, -10.3812, 2.5073



97.7124, -13.3790, 2.5695



79.9538, -5.5723, -1.0416



38.5086, -5.0695, 1.0808



57.4978, -30.4749, -6.0807



14.6353, -7.7573, -1.5470

Previews

White Background



This preview shows how the HunterLab color 78.2342, 2.1415, 6.3674 looks on a white background.

Color Contrast Check

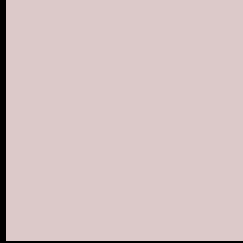
Large Text (above 18pt) WCAG AA × Fail

Any Text WCAG AA × Fail

Large Text (above 18pt) WCAG AAA × Fail

Any Text WCAG AAA × Fail

Black Background



This preview shows how the HunterLab color 78.2342, 2.1415, 6.3674 looks on a black background.

Color Contrast Check

Large Text (above 18pt) WCAG AA ✓ Pass

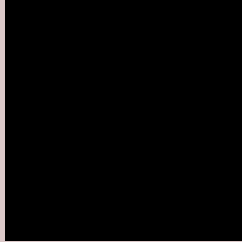
Any Text WCAG AA ✓ Pass

Large Text (above 18pt) WCAG AAA ✓ Pass

Any Text WCAG AAA ✓ Pass

If you want to check with other color combinations, try the [Color Contrast Checker](#).

HunterLab 78.2342, 2.1415, 6.3674 Background



This preview shows how black text looks on a background with the HunterLab color 78.2342, 2.1415, 6.3674.



This preview shows how white text looks on a background with the HunterLab color 78.2342, 2.1415,

6.3674.

Color Blindness Simulation

Color vision deficiency is a very complex topic, and I could not describe the different causes any better than Wikipedia does, so if you want to learn more, you should check out their [article about color blindness](#).

Dichromacy



Original Color

78.2342, 2.1415, 6.3674

Protanopia

78.1363, -2.7159, 5.2274

Deuteranopia

78.3548, 5.5896, 6.5665



Tritanopia

78.2833, 6.2300, -0.3449

Trichromacy



Original Color

78.2342, 2.1415, 6.3674

Protanomaly

78.1807, -1.0654, 5.7804

Deuteranomaly

78.3409, 4.0281, 6.5231

Tritanomaly

78.3159, 4.5008, 2.1765

Monochromacy



Original Color

78.2342, 2.1415, 6.3674

Achromatopsia

78.9912, -4.2148, 4.2917

Achromatomaly

78.7829, -1.9220, 5.0451

CSS Examples

Text

The CSS property to change the color of the text to HunterLab 78.2342, 2.1415, 6.3674 is called "color". The color property can be set on classes, ids or directly on the HTML element.

This example shows how text in the color `rgb(220, 201, 201)` looks like.

```
.text, #text, p{  
    color:rgb(220, 201, 201)  
}
```

If you want to add a text shadow in that color use the text-shadow property, you can generate a text shadow directly with our [CSS Text Shadow Generator](#).

Here you see how black text with a 4 pixel rgb(220, 201, 201) colored shadow looks like.

```
.shadow{ text-shadow: 4px 4px 2px rgb(220, 201, 201) }
```

Border

The CSS property to change the border of an element to HunterLab 78.2342, 2.1415, 6.3674 is called "border". The border property can be set on classes, ids or directly on the HTML element.

This example shows the color as border, it can be applied via the CSS property "border" or "border-color".

```
.border, #border, table{ border:4px solid rgb(220, 201, 201) }
```


If only the border color should be changed use the property `border-color`.

```
.border{ border-color:rgb(220, 201, 201) }
```

If you want to add a box shadow in that color use:

Here you see how a box with a 4 pixel `rgb(220, 201, 201)` colored shadow looks like.

```
.boxshadow{ -moz-box-shadow:4px 4px 4px  
4px rgb(220, 201, 201); -webkit-box-  
shadow:4px 4px 4px 4px rgb(220, 201, 201);  
box-shadow:4px 4px 4px 4px rgb(220, 201,  
201) }
```

Background

The CSS property to change the background color of an element to HunterLab 78.2342, 2.1415, 6.3674 is called "background". The background property can be set on classes, ids or directly on the HTML element.

```
.background, #background, body{  
background: rgb(220, 201, 201) }
```

If only the background color should be changed can be used:

```
.background{ background-color: rgb(220,  
201, 201) }
```

This example shows the color as background, it is applied via the CSS property "background".

To optimize and compress your CSS code, you can use our [online CSS compressor and optimizer](#) based on csstidy. If you want to create a linear or radial gradient as background or border, check our [CSS Gradient Generator](#).

Hey! You found this booklet interesting? Support Converting Colors with the new Membership Option!

The pro membership hides all ads, plus gives you double the colors in the color bucket, and more awesome pro features!

[Learn more, Memberships starting at \\$2.50/m!](#)

**Follow me
on Twitter!**

@ConvertingColor