

Converting Colors

HunterLab(78.3524, -0.1027,
13.1170)

Have a look what the booklet for
HunterLab(78.3524, -0.1027,
13.1170) contains.

HunterLab(78.3044, -0.0134, 13.0766)	3
<i>Conversions</i>	4
<i>Details</i>	6
<i>Harmonies</i>	12
<i>Previews</i>	24
<i>Color Blindness Simulation</i>	28
<i>CSS Examples</i>	31

Color

**HunterLab(78.3044, -0.0134,
13.0766)**

Conversions

Conversions Part 1

Format	Color
Hex	DECABA
RGB	222, 202, 186
RGB Percent	87%, 79%, 73%
CMY	0.1294, 0.2078, 0.2706
CMYK	0.00, 0.09, 0.16, 0.13
HSL	27°, 35%, 80%
HSV	27°, 16%, 87%
XYZ	60.1076, 61.3158, 55.1214
YIQ	206.1560, 17.0560, -0.7360

Conversions

Conversions Part 2

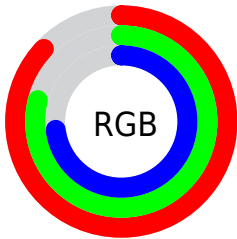
Format	Color
R _Y B	222, 215, 186
Decimal	14600890
CIE Lab	82.55, 4.40, 10.51
CIE LCh	83, 11.395, 67.313
Yxy	61.3185, 0.3405, 0.3473
Android (android.graphics.Color)	4292790970 (0xFFDECABA)
YUV	206.1560, -9.9369, 13.8952
Hunter-Lab	78.3044, -0.0134, 13.0766

Details

The HunterLab color $78.3044, -0.0134, 13.0766$ is a light color, and the websafe version is hex `CCCCCC`. A complement of this color would be $77.3656, -7.3259, -5.4175$, and the grayscale version is $78.6669, -4.1975, 4.2741$.

A 20% lighter version of the original color is $99.5946, -7.5613, 11.2284$, and $55.7573, 0.8987, 10.7769$ is the 20% darker color. If you saturate the color by 10%, you get $74.0871, 3.2229, 17.6766$, and if you desaturate by 10%, it is $82.6784, -2.9161, 8.0082$.

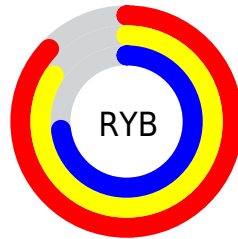
Distribution



Red (87%)

Green (79%)

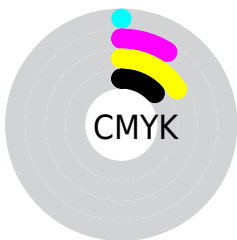
Blue (73%)



Red (87%)

Yellow (84%)

Blue (73%)

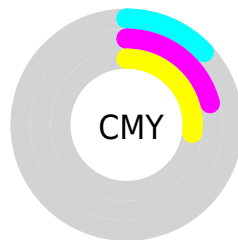


Cyan (0%)

Magenta (9%)

Yellow (16%)

Black (13%)



Cyan (13%)

Magenta (21%)

Yellow (27%)

Brightness & Saturation Gradients

These gradients show how the HunterLab color 78.3044, -0.0134, 13.0766 changes by changing the brightness by 10 percent. The first figure shows a shift by +10% for each color and the second figure -10%.

Similar to the brightness gradients but the following saturation gradients show a change of the HunterLab color 78.3044, -0.0134, 13.0766 by changing the saturation by 10% instead.

■ 78.3044, -0.0134,
13.0766

■ 78.3044, -0.0134,
13.0766

207.2296, -5.3333,
23.8448

■ 66.6950, 0.3920,
11.9271

■ 103.3151, -0.9561,
15.3957

■ 55.7224, 0.7535,
10.7774

116.6593, -1.4835,
16.5673

■ 45.4277, 1.0645,
9.6236

130.5333, -2.0462,
17.7494

■ 35.8591, 1.3190,
8.4578

144.9174, -2.6423,
18.9430

■ 27.0765, 1.5095,
7.2677

159.7942, -3.2704,
20.1488

■ 19.1577, 1.6248,
6.0325

175.1479, -3.9290,

■ 12.2100, 1.6477,

21.3674

4.7706

190.9641, -4.6170,
22.5993

■ 5.3129, 3.3211,
3.7190

0.0000, NaN, NaN

■ 78.3044, -0.0134,
13.0766

■ 78.3044, -0.0134,
13.0766

■ 74.0871, 3.2229,
17.6766

■ 82.6784, -2.9161,
8.0082

■ 70.0364, 6.8251,
21.7438

■ 87.1904, -5.5052,
2.5214

■ 66.1712, 10.8122,
25.2124

■ 91.8302, -7.8100,
-3.3359

■ 62.5101, 15.1967,
28.0111

■ 95.8903, -13.7234,
0.3499

■ 59.0735, 19.9776,
30.0694

■ 97.0926, -15.6027,
1.7822

■ 55.8826, 25.1319,
31.3265

■ 52.9585, 30.6054,
31.7479

■ 50.3192, 36.2992,
31.3577

■ 49.3916, 38.4535,
31.1081

Harmonies

Analogous

The Analogous color harmony consists of three colors that are next to each other on the color wheel.



78.3061, 4.5041, 10.1805



78.3044, -0.0134, 13.0766



78.3061, -5.5388, 13.6945

Triad

The Triadic color harmony groups three colors that are evenly spaced from another and form a triangle on the color wheel.



78.3061, -0.0157, 13.0778



78.3061, -14.5078, 2.9567



78.3061, 2.4047, -4.2661

Complementary

The Complementary color scheme is a pair of colors which are on the opposite of each other on the color wheel.



78.3044, -0.0134, 13.0766



77.3656, -7.3259, -5.4175

Split Complementary

Split-complementary colors differ from the complementary color scheme. The scheme consists of three colors, the original color and two neighbors of the complement color.



78.3061, -2.8168, -6.5118



78.3044, -0.0134, 13.0766



78.3061, -12.5060, -2.1570

Square

The Square scheme is like the rectangle color scheme, but the four colors are evenly spaced on the color wheel.



78.3061, -0.0157, 13.0778



78.3061, -13.8050, 8.0847



78.3061, -8.2638, -5.7143



78.3061, 5.9285, 0.2371

Rectangle

The Rectangle color scheme consists of four colors that form a rectangle on the color wheel.



78.3044, -0.0134, 13.0766



78.3061, -9.0283, 12.7717



78.3061, -8.2638, -5.7143



78.3061, 0.7843, -5.3239

Sweetspot

The Sweet Spot groups the original color and five complimentary colors.



78.3061, -0.0157, 13.0778



97.3501, -3.7868, 8.6384



74.2455, 11.6122, -0.8816



44.8678, -1.6479, 4.2005

0.0000, NaN, NaN



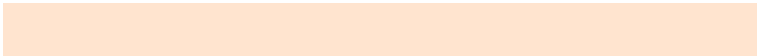
46.2646, -2.4686, 2.5136

Same Dimension

The Same Dimension uses a secret algorithm to generate beautiful new colors.



78.3061, -0.0157, 13.0778



90.1548, 1.0500, 16.9389



83.6971, -8.9624, 18.5086



38.3387, -0.9500, 4.5753



38.3464, 28.9404, 24.1355



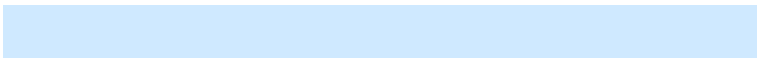
10.9349, 5.6505, 6.8370

Inverse Universe

The Inverse Universe completely reimagines the original color for something new.



77.3656, -7.3259, -5.4175



88.8594, -9.0104, -8.5285



72.0079, 1.6592, -12.5021



38.0782, -2.9768, -0.5480



34.3765, 3.0544, -49.5611



9.9846, -0.7981, -10.7569

Previews

White Background



This preview shows how the HunterLab color 78.3044, -0.0134, 13.0766 looks on a white background.

Color Contrast Check

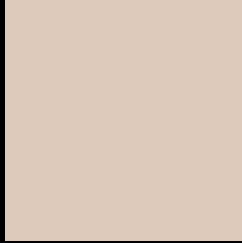
Large Text (above 18pt) WCAG AA × Fail

Any Text WCAG AA × Fail

Large Text (above 18pt) WCAG AAA × Fail

Any Text WCAG AAA × Fail

Black Background



This preview shows how the HunterLab color 78.3044, -0.0134, 13.0766 looks on a black background.

Color Contrast Check

Large Text (above 18pt) WCAG AA ✓ Pass

Any Text WCAG AA ✓ Pass

Large Text (above 18pt) WCAG AAA ✓ Pass

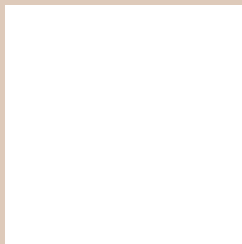
Any Text WCAG AAA ✓ Pass

If you want to check with other color combinations, try the [Color Contrast Checker](#).

HunterLab 78.3044, -0.0134, 13.0766 Background



This preview shows how black text looks on a background with the HunterLab color 78.3044, -0.0134, 13.0766.



This preview shows how white text looks on a background with the HunterLab color 78.3044, -0.0134,

13.0766.

Color Blindness Simulation

Color vision deficiency is a very complex topic, and I could not describe the different causes any better than Wikipedia does, so if you want to learn more, you should check out their [article about color blindness](#).

Dichromacy



Original Color

78.3044, -0.0134, 13.0766

Protanopia

78.3560, -4.4451, 12.6307

Deuteranopia

78.1868, 5.7286, 12.6276



Tritanopia

78.3333, 7.7716, 0.7576

Trichromacy



Original Color

78.3044, -0.0134, 13.0766

Protanomaly

78.3406, -2.9341, 12.6407

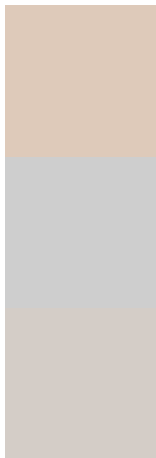
Deuteranomaly

78.0568, 3.7823, 12.4540

Tritanomaly

78.2088, 5.2206, 5.4508

Monochromacy



Original Color

78.3044, -0.0134, 13.0766

Achromatopsia

78.5625, -4.1919, 4.2684

Achromatomaly

78.6023, -2.9074, 7.6263

CSS Examples

Text

The CSS property to change the color of the text to HunterLab 78.3044, -0.0134, 13.0766 is called "color". The color property can be set on classes, ids or directly on the HTML element.

This example shows how text in the color `rgb(222, 202, 186)` looks like.

```
.text, #text, p{  
    color:rgb(222, 202, 186)  
}
```

If you want to add a text shadow in that color use the text-shadow property, you can generate a text shadow directly with our [CSS Text Shadow Generator](#).

Here you see how black text with a 4 pixel rgb(222, 202, 186) colored shadow looks like.

```
.shadow{ text-shadow: 4px 4px 2px rgb(222, 202, 186) }
```

Border

The CSS property to change the border of an element to HunterLab 78.3044, -0.0134, 13.0766 is called "border". The border property can be set on classes, ids or directly on the HTML element.

This example shows the color as border, it can be applied via the CSS property "border" or "border-color".

```
.border, #border, table{ border:4px solid rgb(222, 202, 186) }
```


If only the border color should be changed use the property `border-color`.

```
.border{ border-color:rgb(222, 202, 186) }
```

If you want to add a box shadow in that color use:

Here you see how a box with a 4 pixel `rgb(222, 202, 186)` colored shadow looks like.

```
.boxshadow{ -moz-box-shadow:4px 4px 4px  
4px rgb(222, 202, 186); -webkit-box-  
shadow:4px 4px 4px 4px rgb(222, 202, 186);  
box-shadow:4px 4px 4px 4px rgb(222, 202,  
186) }
```

Background

The CSS property to change the background color of an element to HunterLab 78.3044, -0.0134, 13.0766 is called "background". The background property can be set on classes, ids or directly on the HTML element.

```
.background, #background, body{  
background: rgb(222, 202, 186) }
```

If only the background color should be changed can be used:

```
.background{ background-color: rgb(222,  
202, 186) }
```

This example shows the color as background, it is applied via the CSS property "background".

To optimize and compress your CSS code, you can use our [online CSS compressor and optimizer](#) based on csstidy. If you want to create a linear or radial gradient as background or border, check our [CSS Gradient Generator](#).

Hey! You found this booklet interesting? Support Converting Colors with the new Membership Option!

The pro membership hides all ads, plus gives you double the colors in the color bucket, and more awesome pro features!

[Learn more, Memberships starting at \\$2.50/m!](#)

**Follow me
on Twitter!**

@ConvertingColor