

# Converting Colors

HunterLab(78.3795, 6.5036,  
5.4713)

Have a look what the booklet for  
HunterLab(78.3795, 6.5036, 5.4713)  
contains.

<b>HunterLab(78.5192, 6.2609, 5.8296)</b> .....	3
<i><b>Conversions</b></i> .....	4
<i><b>Details</b></i> .....	6
<i><b>Harmonies</b></i> .....	12
<i><b>Previews</b></i> .....	24
<i><b>Color Blindness Simulation</b></i> .....	28
<i><b>CSS Examples</b></i> .....	31

# Color

**HunterLab(78.5192, 6.2609,  
5.8296)**

# Conversions

## Conversions Part 1

<b>Format</b>	<b>Color</b>
Hex	E4C7CB
RGB	228, 199, 203
RGB Percent	89%, 78%, 80%
CMY	0.1059, 0.2196, 0.2039
CMYK	0.00, 0.13, 0.11, 0.11
HSL	352°, 35%, 84%
HSV	352°, 13%, 89%
XYZ	63.1978, 61.6526, 65.0691
YIQ	208.1270, 16.0000, 7.3920

# Conversions

## Conversions Part 2

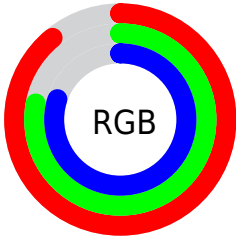
Format	Color
R <sub>Y</sub> B	228, 199, 203
Decimal	14993355
CIE Lab	82.73, 10.85, 1.76
CIE LCh	83, 10.993, 9.217
Yxy	61.6554, 0.3328, 0.3246
Android (android.graphics.Color)	4293183435 (0xFFE4C7CB)
YUV	208.1270, -2.5276, 17.4286
Hunter-Lab	78.5192, 6.2609, 5.8296

# Details

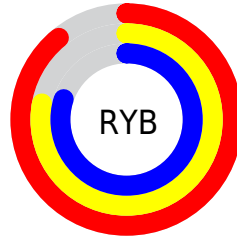
The HunterLab color  $78.5192, 6.2609, 5.8296$  is a light color, and the websafe version is hex `FFCCCC`. A complement of this color would be  $85.4472, -14.2619, 3.4670$ , and the grayscale version is  $79.4819, -4.2410, 4.3184$ .

A 20% lighter version of the original color is  $100.0000, -5.3358, 5.4332$ , and  $55.8492, 6.3401, 4.3395$  is the 20% darker color. If you saturate the color by 10%, you get  $71.4553, 15.2042, 6.9684$ , and if you desaturate by 10%, it is  $85.9900, -2.3969, 4.9752$ .

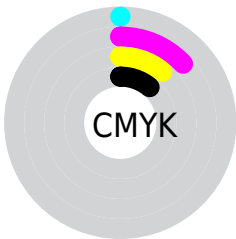
# Distribution



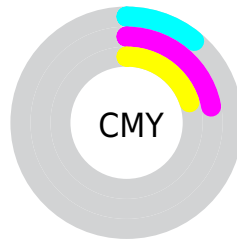
- Red (89%)
- Green (78%)
- Blue (80%)



- Red (89%)
- Yellow (78%)
- Blue (80%)



- Cyan (0%)
- Magenta (13%)
- Yellow (11%)
- Black (11%)




- Cyan (11%)
- Magenta (22%)
- Yellow (20%)


# Brightness & Saturation Gradients

These gradients show how the HunterLab color 78.5192, 6.2609, 5.8296 changes by changing the brightness by 10 percent. The first figure shows a shift by +10% for each color and the second figure -10%.


Similar to the brightness gradients but the following saturation gradients show a change of the HunterLab color 78.5192, 6.2609, 5.8296 by changing the saturation by 10% instead.




 78.5192, 6.2609,  
5.8296

 78.5192, 6.2609,  
5.8296

207.5266, 3.1938,  
13.4594

 66.8987, 6.3641,  
5.1156


103.5506, 5.8829,  
7.3468

 55.9142, 6.4076,  
4.4301

116.9046, 5.6212,  
8.1454

 45.6069, 6.3817,  
3.7756


130.7879, 5.3146,  
8.9701

 36.0247, 6.2771,  
3.1532

145.1811, 4.9660,  
9.8201

 27.2273, 6.0812,  
2.5642

160.0666, 4.5777,  
10.6946

 19.2922, 5.7759,  
2.0096

175.4287, 4.1518,

 12.3257, 5.3345,

11.5930

1.4897

191.2531, 3.6899,  
12.5148

■ 5.4973, 8.3075,  
1.6269

0.0000, NaN, NaN

■ 78.5192, 6.2609,  
5.8296

■ 78.5192, 6.2609,  
5.8296

■ 71.4553, 15.2042,  
6.9684

■ 85.9900, -2.3969,  
4.9752

■ 64.8679, 24.4133,  
8.4329

■ 93.8033, -10.7743,  
4.3579

■ 58.8518, 33.7836,  
10.2626

■ 97.5880, -13.8310,  
2.4118

■ 53.5190, 43.0835,  
12.4715

■ 48.9958, 51.8928,  
15.0210

■ 45.4075, 59.5818,  
17.7867

■ 42.8464, 65.4133,  
20.5433

■ 41.3256, 68.8261,  
23.0001

■ 40.7373, 70.0123,  
24.3986

# Harmonies

## Analogous

The Analogous color harmony consists of three colors that are next to each other on the color wheel.



78.5209, 5.6931, 0.7090



78.5192, 6.2609, 5.8296



78.5209, 3.9656, 10.2333

# Triad

The Triadic color harmony groups three colors that are evenly spaced from another and form a triangle on the color wheel.



78.5209, 6.2586, 5.8309



78.5209, -10.6151, 11.5084



78.5209, -7.8236, -5.4731

# Complementary

The Complementary color scheme is a pair of colors which are on the opposite of each other on the color wheel.



78.5192, 6.2609, 5.8296



85.4472, -14.2619, 3.4670

# Split Complementary

Split-complementary colors differ from the complementary color scheme. The scheme consists of three colors, the original color and two neighbors of the complement color.



78.5209, -12.0333, -2.1921



78.5192, 6.2609, 5.8296



78.5209, -13.6146, 7.6795

# Square

The Square scheme is like the rectangle color scheme, but the four colors are evenly spaced on the color wheel.



78.5209, 6.2586, 5.8309



78.5209, -5.8407, 13.3632



78.5209, -14.1267, 2.6847



78.5209, -2.5334, -6.0508



# Rectangle

The Rectangle color scheme consists of four colors that form a rectangle on the color wheel.



78.5192, 6.2609, 5.8296



78.5209, 1.1598, 12.2517



78.5209, -14.1267, 2.6847



78.5209, -9.4079, -4.6397

# Sweetspot

The Sweet Spot groups the original color and five complimentary colors.



78.5209, 6.2586, 5.8309



96.4937, -1.4550, 5.7591



78.8940, 9.1382, -6.3868



44.3406, -0.3328, 2.6950

0.0000, NaN, NaN



46.2646, -2.4686, 2.5136



# Same Dimension

The Same Dimension uses a secret algorithm to generate beautiful new colors.



78.5209, 6.2586, 5.8309



87.1963, 9.4882, 6.8958



81.4214, 0.3253, 10.8287



37.9476, 1.5977, 2.5904



30.9721, 53.2617, 18.2998



8.4806, 14.7049, 4.0722



# Inverse Universe

The Inverse Universe completely reimagines the original color for something new.



78.5209, 6.2586, 5.8309



87.1963, 9.4882, 6.8958



82.3473, -8.4312, -2.2532



37.9476, 1.5977, 2.5904



30.9721, 53.2617, 18.2998

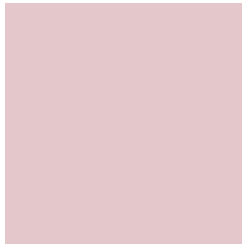


8.4806, 14.7049, 4.0722



# Previews

## White Background



This preview shows how the HunterLab color 78.5192, 6.2609, 5.8296 looks on a white background.

## Color Contrast Check

Large Text (above 18pt) WCAG AA × Fail

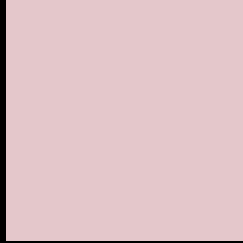
Any Text WCAG AA × Fail

Large Text (above 18pt) WCAG AAA × Fail

Any Text WCAG AAA × Fail



# Black Background



This preview shows how the HunterLab color 78.5192, 6.2609, 5.8296 looks on a black background.

## Color Contrast Check

Large Text (above 18pt) WCAG AA ✓ Pass

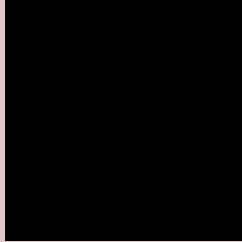
Any Text WCAG AA ✓ Pass

Large Text (above 18pt) WCAG AAA ✓ Pass

Any Text WCAG AAA ✓ Pass

If you want to check with other color combinations, try the [Color Contrast Checker](#).

# HunterLab 78.5192, 6.2609, 5.8296 Background



This preview shows how black text looks on a background with the HunterLab color 78.5192, 6.2609, 5.8296.



This preview shows how white text looks on a background with the HunterLab color 78.5192, 6.2609,

5.8296.

# Color Blindness Simulation

Color vision deficiency is a very complex topic, and I could not describe the different causes any better than Wikipedia does, so if you want to learn more, you should check out their [article about color blindness](#).

## Dichromacy



### Original Color

78.5192, 6.2609, 5.8296

### Protanopia

78.5329, -2.7241, 4.2593

### Deuteranopia

78.4153, 5.9130, 5.7029



## Tritanopia

78.3547, 9.3375, 0.8112

# Trichromacy



## Original Color

78.5192, 6.2609, 5.8296

## Protanomaly

78.5612, 0.4223, 4.8268

## Deuteranomaly

78.4153, 5.9130, 5.7029

## Tritanomaly

78.5173, 8.1273, 2.9742

# Monochromacy



## Original Color

78.5192, 6.2609, 5.8296

## Achromatopsia

79.4202, -4.2377, 4.3151

## Achromatomaly

79.0986, -0.7739, 4.9574

# CSS Examples

## Text

The CSS property to change the color of the text to HunterLab 78.5192, 6.2609, 5.8296 is called "color". The color property can be set on classes, ids or directly on the HTML element.

This example shows how text in the color `rgb(228, 199, 203)` looks like.

```
.text, #text, p{  
    color:rgb(228, 199, 203)  
}
```

If you want to add a text shadow in that color use the text-shadow property, you can generate a text shadow directly with our [CSS Text Shadow Generator](#).

Here you see how black text with a 4 pixel rgb(228, 199, 203) colored shadow looks like.

```
.shadow{ text-shadow: 4px 4px 2px rgb(228, 199, 203) }
```

## Border

The CSS property to change the border of an element to HunterLab 78.5192, 6.2609, 5.8296 is called "border". The border property can be set on classes, ids or directly on the HTML element.

This example shows the color as border, it can be applied via the CSS property "border" or "border-color".

```
.border, #border, table{ border:4px solid rgb(228, 199, 203) }
```



If only the border color should be changed use the property `border-color`.

```
.border{ border-color:rgb(228, 199, 203) }
```

If you want to add a box shadow in that color use:

Here you see how a box with a 4 pixel `rgb(228, 199, 203)` colored shadow looks like.

```
.boxshadow{ -moz-box-shadow:4px 4px 4px  
4px rgb(228, 199, 203); -webkit-box-  
shadow:4px 4px 4px 4px rgb(228, 199, 203);  
box-shadow:4px 4px 4px 4px rgb(228, 199,  
203) }
```

# Background

The CSS property to change the background color of an element to HunterLab 78.5192, 6.2609, 5.8296 is called "background". The background property can be set on classes, ids or directly on the HTML element.

```
.background, #background, body{  
background: rgb(228, 199, 203) }
```

If only the background color should be changed can be used:

```
.background{ background-color: rgb(228,  
199, 203) }
```

This example shows the color as background, it is applied via the CSS property "background".

To optimize and compress your CSS code, you can use our [online CSS compressor and optimizer](#) based on csstidy. If you want to create a linear or radial gradient as background or border, check our [CSS Gradient Generator](#).

Hey! You found this booklet interesting? Support Converting Colors with the new Membership Option!

The pro membership hides all ads, plus gives you double the colors in the color bucket, and more awesome pro features!

**[Learn more, Memberships starting at \\$2.50/m!](#)**

**Follow me  
on Twitter!**

@ConvertingColor