

Converting Colors

HunterLab(78.4055, 1.0192,
6.1698)

Have a look what the booklet for
HunterLab(78.4055, 1.0192, 6.1698)
contains.

HunterLab(78.3650, 1.1116, 6.0317)	3
<i>Conversions</i>	4
<i>Details</i>	6
<i>Harmonies</i>	12
<i>Previews</i>	24
<i>Color Blindness Simulation</i>	28
<i>CSS Examples</i>	31

Color

**HunterLab(78.3650, 1.1116,
6.0317)**

Conversions

Conversions Part 1

Format	Color
Hex	DACACA
RGB	218, 202, 202
RGB Percent	85%, 79%, 79%
CMY	0.1451, 0.2078, 0.2078
CMYK	0.00, 0.07, 0.07, 0.15
HSL	0°, 18%, 82%
HSV	0°, 7%, 85%
XYZ	60.6946, 61.4107, 64.5316
YIQ	206.7840, 9.5360, 3.3920

Conversions

Conversions Part 2

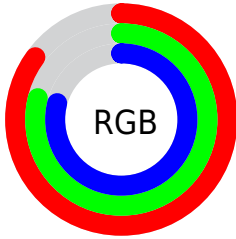
Format	Color
R _Y B	218, 202, 202
Decimal	14338762
CIE Lab	82.60, 5.57, 2.00
CIE LCh	83, 5.918, 19.783
Yxy	61.4134, 0.3252, 0.3290
Android (android.graphics.Color)	4292528842 (0xFFDACACA)
YUV	206.7840, -2.3585, 9.8364
Hunter-Lab	78.3650, 1.1116, 6.0317

Details

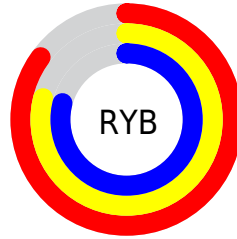
The HunterLab color $78.3650, 1.1116, 6.0317$ is a light color, and the websafe version is hex `CCCCCC`. A complement of this color would be $82.3165, -9.4291, 2.7823$, and the grayscale version is $78.9069, -4.2103, 4.2872$.

A 20% lighter version of the original color is $100.0000, -5.3358, 5.4332$, and $55.7714, 1.7440, 4.6120$ is the 20% darker color. If you saturate the color by 10%, you get $71.3699, 8.9998, 8.1745$, and if you desaturate by 10%, it is $85.7208, -6.4478, 4.0286$.

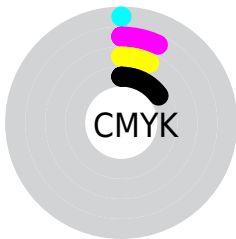
Distribution



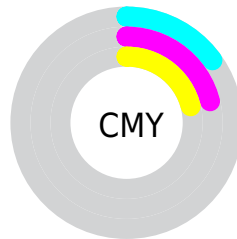
- Red (85%)
- Green (79%)
- Blue (79%)



- Red (85%)
- Yellow (79%)
- Blue (79%)



- Cyan (0%)
- Magenta (7%)
- Yellow (7%)
- Black (15%)



- Cyan (15%)
- Magenta (21%)
- Yellow (21%)

Brightness & Saturation Gradients

These gradients show how the HunterLab color 78.3650, 1.1116, 6.0317 changes by changing the brightness by 10 percent. The first figure shows a shift by +10% for each color and the second figure -10%.

Similar to the brightness gradients but the following saturation gradients show a change of the HunterLab color 78.3650, 1.1116, 6.0317 by changing the saturation by 10% instead.

■ 78.3650, 1.1116,
6.0317

■ 78.3650, 1.1116,
6.0317

207.3133, -3.7950,
13.7426

■ 66.7525, 1.4615,
5.3065

103.3815, 0.2729,
7.5694

■ 55.7765, 1.7643,
4.6092

116.7285, -0.2057,
8.3777

■ 45.4783, 2.0129,
3.9420

130.6051, -0.7214,
9.2116

■ 35.9058, 2.2008,
3.3059

144.9918, -1.2721,
10.0705

■ 27.1190, 2.3192,
2.7019

159.8710, -1.8563,
10.9536

■ 19.1956, 2.3555,
2.1304

175.2271, -2.4723,

■ 12.2426, 2.2900,

11.8604

1.5909

191.0456, -3.1190,
12.7902

■ 5.3655, 4.2360,
1.8395

0.0000, NaN, NaN

■ 78.3650, 1.1116,
6.0317

■ 78.3650, 1.1116,
6.0317

■ 71.3699, 8.9998,
8.1745

■ 85.7208, -6.4478,
4.0286

■ 64.7949, 17.2377,
10.4626

■ 93.3811, -13.7068,
2.1461

■ 58.7230, 25.7905,
12.8922

■ 96.7707, -16.7591,
1.3714

■ 53.2547, 34.5345,
15.4288

■ 48.5078, 43.1936,
17.9884

■ 44.6090, 51.2837,
20.4176

■ 41.6707, 58.1262,
22.4972

■ 39.7509, 63.0191,
23.9961

■ 38.7883, 65.6173,
24.7953

Harmonies

Analogous

The Analogous color harmony consists of three colors that are next to each other on the color wheel.



78.3667, 1.3557, 3.3227



78.3650, 1.1116, 6.0317



78.3667, -0.5671, 8.1939

Triad

The Triadic color harmony groups three colors that are evenly spaced from another and form a triangle on the color wheel.



78.3667, 1.1095, 6.0330



78.3667, -8.3819, 7.6011



78.3667, -5.1684, -1.1142

Complementary

The Complementary color scheme is a pair of colors which are on the opposite of each other on the color wheel.



78.3650, 1.1116, 6.0317



82.3165, -9.4291, 2.7823

Split Complementary

Split-complementary colors differ from the complementary color scheme. The scheme consists of three colors, the original color and two neighbors of the complement color.



78.3667, -7.7397, 0.1230



78.3650, 1.1116, 6.0317



78.3667, -9.5772, 5.1971

Square

The Square scheme is like the rectangle color scheme, but the four colors are evenly spaced on the color wheel.



78.3667, 1.1095, 6.0330



78.3667, -6.0567, 9.0763



78.3667, -9.3438, 2.4563



78.3667, -2.2969, -0.8706

Rectangle

The Rectangle color scheme consists of four colors that form a rectangle on the color wheel.



78.3650, 1.1116, 6.0317



78.3667, -2.2570, 9.0635



78.3667, -9.3438, 2.4563



78.3667, -6.0958, -0.8560

Sweetspot

The Sweet Spot groups the original color and five complimentary colors.



78.3667, 1.1095, 6.0330



98.2170, -3.5251, 5.9119



78.8729, 3.8476, -1.1932



45.4804, -1.6726, 2.7241

0.0000, NaN, NaN



46.2646, -2.4686, 2.5136

Same Dimension

The Same Dimension uses a secret algorithm to generate beautiful new colors.



78.3667, 1.1095, 6.0330



92.1051, 2.9355, 7.6380



80.7860, -3.0106, 8.7176



36.1276, 1.2857, 3.0410



29.8845, 51.1703, 19.3105



7.6076, 13.0202, 4.9157

Inverse Universe

The Inverse Universe completely reimagines the original color for something new.



82.3165, -9.4291, 2.7823



97.9289, -12.6081, 2.8433



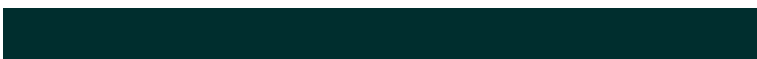
79.8201, -5.3757, -0.1792



38.5085, -5.0693, 1.0807



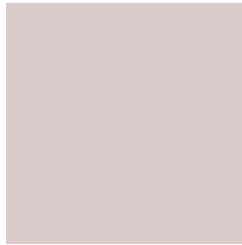
57.4956, -30.4722, -6.0836



14.6349, -7.7568, -1.5477

Previews

White Background



This preview shows how the HunterLab color 78.3650, 1.1116, 6.0317 looks on a white background.

Color Contrast Check

Large Text (above 18pt) WCAG AA × Fail

Any Text WCAG AA × Fail

Large Text (above 18pt) WCAG AAA × Fail

Any Text WCAG AAA × Fail

Black Background



This preview shows how the HunterLab color 78.3650, 1.1116, 6.0317 looks on a black background.

Color Contrast Check

Large Text (above 18pt) WCAG AA ✓ Pass

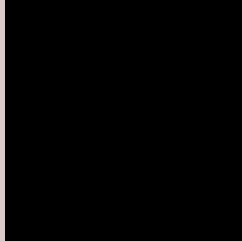
Any Text WCAG AA ✓ Pass

Large Text (above 18pt) WCAG AAA ✓ Pass

Any Text WCAG AAA ✓ Pass

If you want to check with other color combinations, try the [Color Contrast Checker](#).

HunterLab 78.3650, 1.1116, 6.0317 Background



This preview shows how black text looks on a background with the HunterLab color 78.3650, 1.1116, 6.0317.



This preview shows how white text looks on a background with the HunterLab color 78.3650, 1.1116,

Color Blindness Simulation

Color vision deficiency is a very complex topic, and I could not describe the different causes any better than Wikipedia does, so if you want to learn more, you should check out their [article about color blindness](#).

Dichromacy



Original Color

78.3650, 1.1116, 6.0317

Protanopia

78.5341, -2.9038, 5.6864

Deuteranopia

78.3118, 5.5663, 5.5766



Tritanopia

78.4105, 5.2077, -0.7164

Trichromacy



Original Color

78.3650, 1.1116, 6.0317

Protanomaly

78.5135, -1.4142, 5.6886

Deuteranomaly

78.2996, 4.0100, 5.5352

Tritanomaly

78.4452, 3.4770, 1.8191

Monochromacy



Original Color

78.3650, 1.1116, 6.0317

Achromatopsia

78.9912, -4.2148, 4.2917

Achromatomaly

78.6888, -2.2468, 4.9295

CSS Examples

Text

The CSS property to change the color of the text to HunterLab 78.3650, 1.1116, 6.0317 is called "color". The color property can be set on classes, ids or directly on the HTML element.

This example shows how text in the color `rgb(218, 202, 202)` looks like.

```
.text, #text, p{  
    color:rgb(218, 202, 202)  
}
```

If you want to add a text shadow in that color use the text-shadow property, you can generate a text shadow directly with our [CSS Text Shadow Generator](#).

Here you see how black text with a 4 pixel rgb(218, 202, 202) colored shadow looks like.

```
.shadow{ text-shadow: 4px 4px 2px rgb(218, 202, 202) }
```

Border

The CSS property to change the border of an element to HunterLab 78.3650, 1.1116, 6.0317 is called "border".

The border property can be set on classes, ids or directly on the HTML element.

This example shows the color as border, it can be applied via the CSS property "border" or "border-color".

```
.border, #border, table{ border:4px solid rgb(218, 202, 202) }
```


If only the border color should be changed use the property `border-color`.

```
.border{ border-color:rgb(218, 202, 202) }
```

If you want to add a box shadow in that color use:

Here you see how a box with a 4 pixel `rgb(218, 202, 202)` colored shadow looks like.

```
.boxshadow{ -moz-box-shadow:4px 4px 4px  
4px rgb(218, 202, 202); -webkit-box-  
shadow:4px 4px 4px 4px rgb(218, 202, 202);  
box-shadow:4px 4px 4px 4px rgb(218, 202,  
202) }
```

Background

The CSS property to change the background color of an element to HunterLab 78.3650, 1.1116, 6.0317 is called "background". The background property can be set on classes, ids or directly on the HTML element.

```
.background, #background, body{  
background: rgb(218, 202, 202) }
```

If only the background color should be changed can be used:

```
.background{ background-color: rgb(218,  
202, 202) }
```

This example shows the color as background, it is applied via the CSS property "background".

To optimize and compress your CSS code, you can use our [online CSS compressor and optimizer](#) based on csstidy. If you want to create a linear or radial gradient as background or border, check our [CSS Gradient Generator](#).

Hey! You found this booklet interesting? Support Converting Colors with the new Membership Option!

The pro membership hides all ads, plus gives you double the colors in the color bucket, and more awesome pro features!

[Learn more, Memberships starting at \\$2.50/m!](#)

**Follow me
on Twitter!**

@ConvertingColor