

Converting Colors

HunterLab(78.4236, 6.2363,
7.5693)

Have a look what the booklet for
HunterLab(78.4236, 6.2363, 7.5693)
contains.

HunterLab(78.5037, 5.9694, 7.6698)	3
<i>Conversions</i>	4
<i>Details</i>	6
<i>Harmonies</i>	12
<i>Previews</i>	24
<i>Color Blindness Simulation</i>	28
<i>CSS Examples</i>	31

Color

**HunterLab(78.5037, 5.9694,
7.6698)**

Conversions

Conversions Part 1

Format	Color
Hex	E5C7C7
RGB	229, 199, 199
RGB Percent	90%, 78%, 78%
CMY	0.1020, 0.2196, 0.2196
CMYK	0.00, 0.13, 0.13, 0.10
HSL	0°, 37%, 84%
HSV	0°, 13%, 90%
XYZ	63.0452, 61.6283, 62.6054
YIQ	207.9700, 17.8800, 6.3600

Conversions

Conversions Part 2

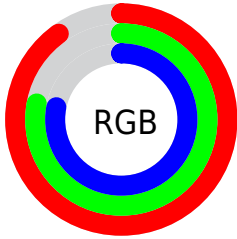
Format	Color
R _Y B	229, 199, 199
Decimal	15058887
CIE Lab	82.72, 10.56, 3.89
CIE LCh	83, 11.250, 20.240
Yxy	61.6311, 0.3366, 0.3291
Android (android.graphics.Color)	4293248967 (0xFFE5C7C7)
YUV	207.9700, -4.4222, 18.4433
Hunter-Lab	78.5037, 5.9694, 7.6698

Details

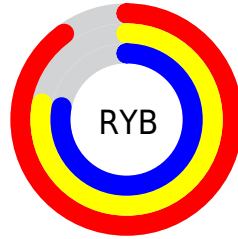
The HunterLab color **78.5037, 5.9694, 7.6698** is a light color, and the websafe version is hex **FFCCCC**. A complement of this color would be **85.9280, -13.8632, 1.5568**, and the grayscale version is **79.4217, -4.2377, 4.3151**.

A 20% lighter version of the original color is **100.0000, -5.3358, 5.4332**, and **55.8385, 6.0795, 6.0700** is the 20% darker color. If you saturate the color by 10%, you get **71.3372, 14.5486, 10.0309**, and if you desaturate by 10%, it is **86.0915, -2.2474, 5.4644**.

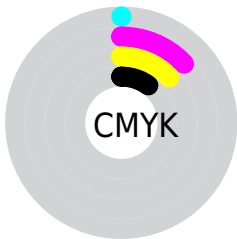
Distribution



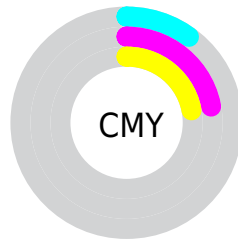
- Red (90%)
- Green (78%)
- Blue (78%)



- Red (90%)
- Yellow (78%)
- Blue (78%)



- Cyan (0%)
- Magenta (13%)
- Yellow (13%)
- Black (10%)



- Cyan (10%)
- Magenta (22%)
- Yellow (22%)

Brightness & Saturation Gradients

These gradients show how the HunterLab color 78.5037, 5.9694, 7.6698 changes by changing the brightness by 10 percent. The first figure shows a shift by +10% for each color and the second figure -10%.

Similar to the brightness gradients but the following saturation gradients show a change of the HunterLab color 78.5037, 5.9694, 7.6698 by changing the saturation by 10% instead.

78.5037, 5.9694,
7.6698

78.5037, 5.9694,
7.6698

207.5052, 2.8005,
16.0449

66.8840, 6.0861,
6.8535

103.5336, 5.5659,
9.3763

55.9003, 6.1438,
6.0592

116.8869, 5.2922,
10.2633

45.5940, 6.1330,
5.2883

130.7696, 4.9741,
11.1728

36.0128, 6.0444,
4.5399

145.1621, 4.6143,
12.1044

27.2165, 5.8655,
3.8124

160.0470, 4.2152,
13.0578

19.2825, 5.5786,
3.1024


175.4085, 3.7787,

12.3174, 5.1571,


14.0326


2.4021


191.2323, 3.3066,
15.0284


 5.4842, 8.0938,
3.2402

0.0000, NaN, NaN


 78.5037, 5.9694,
7.6698


 78.5037, 5.9694,
7.6698


 71.3372, 14.5486,
10.0309


 86.0915, -2.2474,
5.4644

 64.6657, 23.4880,
12.5462

 94.0330, -10.1218,
3.3971

 58.5893, 32.7008,
15.1958

 97.6720, -13.5316,
2.5182

 53.2267, 41.9679,
17.9148

■ 48.7113, 50.8681,
20.5715

■ 45.1730, 58.7514,
22.9574

■ 42.7034, 64.8440,
24.8198

■ 41.3044, 68.5495,
25.9591

■ 40.8152, 69.8930,
26.3737

Harmonies

Analogous

The Analogous color harmony consists of three colors that are next to each other on the color wheel.



78.5054, 6.4922, 2.5504



78.5037, 5.9694, 7.6698



78.5054, 2.6786, 11.6129

Triad

The Triadic color harmony groups three colors that are evenly spaced from another and form a triangle on the color wheel.



78.5054, 5.9670, 7.6711



78.5054, -12.1504, 10.4329



78.5054, -5.9760, -6.2902

Complementary

The Complementary color scheme is a pair of colors which are on the opposite of each other on the color wheel.



78.5037, 5.9694, 7.6698



85.9280, -13.8632, 1.5568

Split Complementary

Split-complementary colors differ from the complementary color scheme. The scheme consists of three colors, the original color and two neighbors of the complement color.



78.5054, -10.8362, -3.8515



78.5037, 5.9694, 7.6698



78.5054, -14.3357, 5.9579

Square

The Square scheme is like the rectangle color scheme, but the four colors are evenly spaced on the color wheel.



78.5054, 5.9670, 7.6711



78.5054, -7.8145, 13.1298



78.5054, -13.8614, 0.7164



78.5054, -0.5047, -5.7528

Rectangle

The Rectangle color scheme consists of four colors that form a rectangle on the color wheel.



78.5037, 5.9694, 7.6698



78.5054, -0.5894, 13.1551



78.5054, -13.8614, 0.7164



78.5054, -7.7329, -5.7852

Sweetspot

The Sweet Spot groups the original color and five complimentary colors.



78.5054, 5.9670, 7.6711



96.4495, -1.6986, 6.3965



79.4750, 11.1305, -6.1350



44.3164, -0.4662, 3.0445

0.0000, NaN, NaN



46.2646, -2.4686, 2.5136

Same Dimension

The Same Dimension uses a secret algorithm to generate beautiful new colors.



78.5054, 5.9670, 7.6711



86.2105, 9.6001, 9.4459



82.9912, -1.8406, 12.5042



37.9056, 1.3686, 3.1967



30.8622, 52.8481, 19.9423



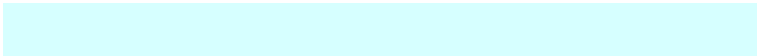
8.3902, 14.3639, 5.4215

Inverse Universe

The Inverse Universe completely reimagines the original color for something new.



85.9280, -13.8632, 1.5568



96.4690, -17.8368, 0.9854



81.1746, -6.2842, -4.2347



40.4179, -5.3368, 1.1294



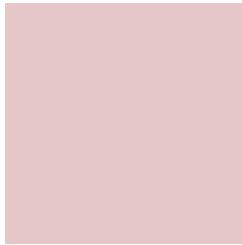
59.3842, -31.4773, -6.2747



16.1433, -8.5572, -1.7053

Previews

White Background



This preview shows how the HunterLab color 78.5037, 5.9694, 7.6698 looks on a white background.

Color Contrast Check

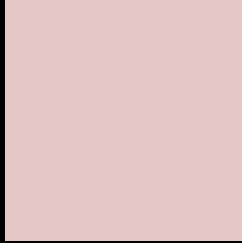
Large Text (above 18pt) WCAG AA × Fail

Any Text WCAG AA × Fail

Large Text (above 18pt) WCAG AAA × Fail

Any Text WCAG AAA × Fail

Black Background



This preview shows how the HunterLab color 78.5037, 5.9694, 7.6698 looks on a black background.

Color Contrast Check

Large Text (above 18pt) WCAG AA ✓ Pass

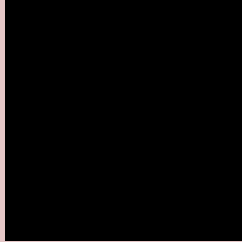
Any Text WCAG AA ✓ Pass

Large Text (above 18pt) WCAG AAA ✓ Pass

Any Text WCAG AAA ✓ Pass

If you want to check with other color combinations, try the [Color Contrast Checker](#).

HunterLab 78.5037, 5.9694, 7.6698 Background



This preview shows how black text looks on a background with the HunterLab color 78.5037, 5.9694, 7.6698.



This preview shows how white text looks on a background with the HunterLab color 78.5037, 5.9694,

7.6698.

Color Blindness Simulation

Color vision deficiency is a very complex topic, and I could not describe the different causes any better than Wikipedia does, so if you want to learn more, you should check out their [article about color blindness](#).

Dichromacy



Original Color

78.5037, 5.9694, 7.6698

Protanopia

78.5039, -3.0692, 6.1188

Deuteranopia

78.5037, 5.9694, 7.6698



Tritanopia

78.5334, 9.8629, 1.5397

Trichromacy



Original Color

78.5037, 5.9694, 7.6698

Protanomaly

78.5370, 0.0969, 6.6796

Deuteranomaly

78.5037, 5.9694, 7.6698

Tritanomaly

78.5596, 8.1426, 3.9988

Monochromacy



Original Color

78.5037, 5.9694, 7.6698

Achromatopsia

79.4202, -4.2377, 4.3151

Achromatomaly

79.1640, -0.6108, 5.5121

CSS Examples

Text

The CSS property to change the color of the text to HunterLab 78.5037, 5.9694, 7.6698 is called "color". The color property can be set on classes, ids or directly on the HTML element.

This example shows how text in the color `rgb(229, 199, 199)` looks like.

```
.text, #text, p{  
    color:rgb(229, 199, 199)  
}
```

If you want to add a text shadow in that color use the text-shadow property, you can generate a text shadow directly with our [CSS Text Shadow Generator](#).

Here you see how black text with a 4 pixel rgb(229, 199, 199) colored shadow looks like.

```
.shadow{ text-shadow: 4px 4px 2px rgb(229, 199, 199) }
```

Border

The CSS property to change the border of an element to HunterLab 78.5037, 5.9694, 7.6698 is called "border". The border property can be set on classes, ids or directly on the HTML element.

This example shows the color as border, it can be applied via the CSS property "border" or "border-color".

```
.border, #border, table{ border:4px solid rgb(229, 199, 199) }
```


If only the border color should be changed use the property `border-color`.

```
.border{ border-color:rgb(229, 199, 199) }
```

If you want to add a box shadow in that color use:

Here you see how a box with a 4 pixel `rgb(229, 199, 199)` colored shadow looks like.

```
.boxshadow{ -moz-box-shadow:4px 4px 4px  
4px rgb(229, 199, 199); -webkit-box-  
shadow:4px 4px 4px 4px rgb(229, 199, 199);  
box-shadow:4px 4px 4px 4px rgb(229, 199,  
199) }
```

Background

The CSS property to change the background color of an element to HunterLab 78.5037, 5.9694, 7.6698 is called "background". The background property can be set on classes, ids or directly on the HTML element.

```
.background, #background, body{  
background: rgb(229, 199, 199) }
```

If only the background color should be changed can be used:

```
.background{ background-color: rgb(229,  
199, 199) }
```

This example shows the color as background, it is applied via the CSS property "background".

To optimize and compress your CSS code, you can use our [online CSS compressor and optimizer](#) based on csstidy. If you want to create a linear or radial gradient as background or border, check our [CSS Gradient Generator](#).

Hey! You found this booklet interesting? Support Converting Colors with the new Membership Option!

The pro membership hides all ads, plus gives you double the colors in the color bucket, and more awesome pro features!

[Learn more, Memberships starting at \\$2.50/m!](#)

**Follow me
on Twitter!**

@ConvertingColor