

Converting Colors

HunterLab(78.4239, 4.7469,
5.8151)

Have a look what the booklet for
HunterLab(78.4239, 4.7469, 5.8151)
contains.

HunterLab(78.5034, 4.6967, 5.7839)	3
<i>Conversions</i>	4
<i>Details</i>	6
<i>Harmonies</i>	12
<i>Previews</i>	24
<i>Color Blindness Simulation</i>	28
<i>CSS Examples</i>	31

Color

**HunterLab(78.5034, 4.6967,
5.7839)**

Conversions

Conversions Part 1

Format	Color
Hex	E1C8CB
RGB	225, 200, 203
RGB Percent	88%, 78%, 80%
CMY	0.1176, 0.2157, 0.2039
CMYK	0.00, 0.11, 0.10, 0.12
HSL	353°, 29%, 83%
HSV	353°, 11%, 88%
XYZ	62.4850, 61.6278, 65.1019
YIQ	207.8170, 13.9370, 6.2330

Conversions

Conversions Part 2

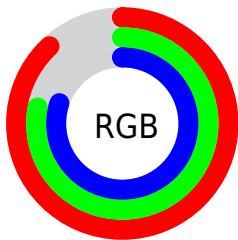
Format	Color
R _Y B	225, 200, 203
Decimal	14797003
CIE Lab	82.72, 9.26, 1.71
CIE LCh	83, 9.418, 10.459
Yxy	61.6306, 0.3302, 0.3257
Android (android.graphics.Color)	4292987083 (0xFFE1C8CB)
YUV	207.8170, -2.3748, 15.0695
Hunter-Lab	78.5034, 4.6967, 5.7839

Details

The HunterLab color $78.5034, 4.6967, 5.7839$ is a light color, and the websafe version is hex `CCCCCC`. A complement of this color would be $84.5016, -12.8292, 3.3538$, and the grayscale version is $79.3488, -4.2339, 4.3112$.

A 20% lighter version of the original color is $100.0000, -5.3358, 5.4332$, and $55.9229, 5.1732, 4.4043$ is the 20% darker color. If you saturate the color by 10%, you get $71.4696, 13.3971, 7.0189$, and if you desaturate by 10%, it is $85.9280, -3.7148, 4.8087$.

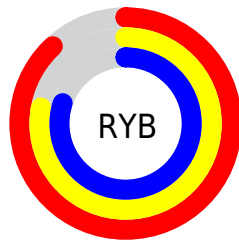
Distribution



Red (88%)

Green (78%)

Blue (80%)



Red (88%)

Yellow (78%)

Blue (80%)

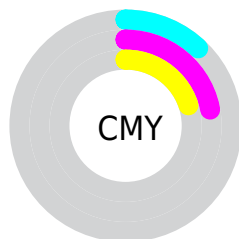


Cyan (0%)

Magenta (11%)

Yellow (10%)

Black (12%)



Cyan (12%)

Magenta (22%)

Yellow (20%)

Brightness & Saturation Gradients

These gradients show how the HunterLab color 78.5034, 4.6967, 5.7839 changes by changing the brightness by 10 percent. The first figure shows a shift by +10% for each color and the second figure -10%.

Similar to the brightness gradients but the following saturation gradients show a change of the HunterLab color 78.5034, 4.6967, 5.7839 by changing the saturation by 10% instead.

78.5034, 4.6967,
5.7839

78.5034, 4.6967,
5.7839

207.5048, 1.0790,
13.3956

66.8837, 4.8735,
5.0724

103.5333, 4.1811,
7.2965

55.9001, 4.9943,
4.3895

116.8866, 3.8544,
8.0930

45.5937, 5.0500,
3.7377

130.7692, 3.4853,
8.9156

36.0126, 5.0322,
3.1183

145.1617, 3.0762,
9.7636

27.2162, 4.9293,
2.5326

160.0466, 2.6292,
10.6362

19.2823, 4.7244,
1.9818

175.4081, 2.1463,

12.3172, 4.3925,

11.5328

1.4661

191.2318, 1.6290,
12.4528

■ 5.4840, 7.0659,
1.5908

0.0000, NaN, NaN

■ 78.5034, 4.6967,
5.7839

■ 78.5034, 4.6967,
5.7839

■ 71.4696, 13.3971,
7.0189

■ 85.9280, -3.7148,
4.8087

■ 64.8927, 22.3775,
8.5498

■ 93.6820, -11.8481,
4.0505

■ 58.8631, 31.5531,
10.4111

■ 97.3384, -14.7223,
2.0950

■ 53.4888, 40.7242,
12.6132

■ 48.8931, 49.5132,
15.1175

■ 45.2015, 57.3329,
17.8058

■ 42.5137, 63.4587,
20.4640

■ 40.8588, 67.2796,
22.8141

■ 40.1082, 68.8835,
24.3903

Harmonies

Analogous

The Analogous color harmony consists of three colors that are next to each other on the color wheel.



78.5051, 4.3164, 1.4070



78.5034, 4.6967, 5.7839



78.5051, 2.6499, 9.5387

Triad

The Triadic color harmony groups three colors that are evenly spaced from another and form a triangle on the color wheel.



78.5051, 4.6945, 5.7852



78.5051, -9.8498, 10.4086



78.5051, -7.1292, -4.0757

Complementary

The Complementary color scheme is a pair of colors which are on the opposite of each other on the color wheel.



78.5034, 4.6967, 5.7839



84.5016, -12.8292, 3.3538

Split Complementary

Split-complementary colors differ from the complementary color scheme. The scheme consists of three colors, the original color and two neighbors of the complement color.



78.5051, -10.8093, -1.3843



78.5034, 4.6967, 5.7839



78.5051, -12.3548, 7.0354

Square

The Square scheme is like the rectangle color scheme, but the four colors are evenly spaced on the color wheel.



78.5051, 4.6945, 5.7852



78.5051, -5.7921, 12.1043



78.5051, -12.7020, 2.7306



78.5051, -2.5811, -4.4581

Rectangle

The Rectangle color scheme consists of four colors that form a rectangle on the color wheel.



78.5034, 4.6967, 5.7839



78.5051, 0.2151, 11.2458



78.5051, -12.7020, 2.7306



78.5051, -8.5060, -3.4040

Sweetspot

The Sweet Spot groups the original color and five complimentary colors.



78.5051, 4.6945, 5.7852



97.3600, -2.4539, 5.7361



78.8825, 7.3869, -4.8054



44.7195, -0.7766, 2.6931

0.0000, NaN, NaN



46.2646, -2.4686, 2.5136

Same Dimension

The Same Dimension uses a secret algorithm to generate beautiful new colors.



78.5051, 4.6945, 5.7852



88.8280, 7.3701, 6.9237



81.1558, -0.5529, 10.0748



37.0501, 1.5213, 2.6054



30.4611, 52.3443, 18.2969



8.0753, 13.9868, 3.9964

Inverse Universe

The Inverse Universe completely reimagines the original color for something new.



78.5051, 4.6945, 5.7852



88.8280, 7.3701, 6.9237



81.6970, -7.6689, -1.4902



37.0501, 1.5213, 2.6054



30.4611, 52.3443, 18.2969



8.0753, 13.9868, 3.9964

Previews

White Background



This preview shows how the HunterLab color 78.5034, 4.6967, 5.7839 looks on a white background.

Color Contrast Check

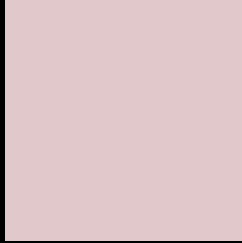
Large Text (above 18pt) WCAG AA × Fail

Any Text WCAG AA × Fail

Large Text (above 18pt) WCAG AAA × Fail

Any Text WCAG AAA × Fail

Black Background



This preview shows how the HunterLab color 78.5034, 4.6967, 5.7839 looks on a black background.

Color Contrast Check

Large Text (above 18pt) WCAG AA ✓ Pass

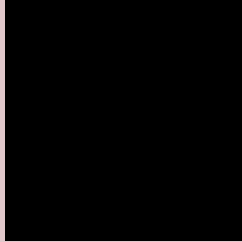
Any Text WCAG AA ✓ Pass

Large Text (above 18pt) WCAG AAA ✓ Pass

Any Text WCAG AAA ✓ Pass

If you want to check with other color combinations, try the [Color Contrast Checker](#).

HunterLab 78.5034, 4.6967, 5.7839 Background



This preview shows how black text looks on a background with the HunterLab color 78.5034, 4.6967, 5.7839.



This preview shows how white text looks on a background with the HunterLab color 78.5034, 4.6967,

5.7839.

Color Blindness Simulation

Color vision deficiency is a very complex topic, and I could not describe the different causes any better than Wikipedia does, so if you want to learn more, you should check out their [article about color blindness](#).

Dichromacy



Original Color

78.5034, 4.6967, 5.7839

Protanopia

78.6260, -2.4021, 4.3745

Deuteranopia

78.4153, 5.9130, 5.7029



Tritanopia

78.3658, 7.9447, 0.2953

Trichromacy



Original Color

78.5034, 4.6967, 5.7839

Protanomaly

78.4645, 0.0914, 4.7077

Deuteranomaly

78.3118, 5.5663, 5.5766

Tritanomaly

78.5294, 6.7299, 2.4726

Monochromacy



Original Color

78.5034, 4.6967, 5.7839

Achromatopsia

79.4202, -4.2377, 4.3151

Achromatomaly

79.0032, -1.1020, 4.8399

CSS Examples

Text

The CSS property to change the color of the text to HunterLab 78.5034, 4.6967, 5.7839 is called "color". The color property can be set on classes, ids or directly on the HTML element.

This example shows how text in the color `rgb(225, 200, 203)` looks like.

```
.text, #text, p{  
    color:rgb(225, 200, 203)  
}
```

If you want to add a text shadow in that color use the text-shadow property, you can generate a text shadow directly with our [CSS Text Shadow Generator](#).

Here you see how black text with a 4 pixel rgb(225, 200, 203) colored shadow looks like.

```
.shadow{ text-shadow: 4px 4px 2px rgb(225, 200, 203) }
```

Border

The CSS property to change the border of an element to HunterLab 78.5034, 4.6967, 5.7839 is called "border". The border property can be set on classes, ids or directly on the HTML element.

This example shows the color as border, it can be applied via the CSS property "border" or "border-color".

```
.border, #border, table{ border:4px solid rgb(225, 200, 203) }
```


If only the border color should be changed use the property `border-color`.

```
.border{ border-color:rgb(225, 200, 203) }
```

If you want to add a box shadow in that color use:

Here you see how a box with a 4 pixel `rgb(225, 200, 203)` colored shadow looks like.

```
.boxshadow{ -moz-box-shadow:4px 4px 4px  
4px rgb(225, 200, 203); -webkit-box-  
shadow:4px 4px 4px 4px rgb(225, 200, 203);  
box-shadow:4px 4px 4px 4px rgb(225, 200,  
203) }
```

Background

The CSS property to change the background color of an element to HunterLab 78.5034, 4.6967, 5.7839 is called "background". The background property can be set on classes, ids or directly on the HTML element.

```
.background, #background, body{  
background: rgb(225, 200, 203) }
```

If only the background color should be changed can be used:

```
.background{ background-color: rgb(225,  
200, 203) }
```

This example shows the color as background, it is applied via the CSS property "background".

To optimize and compress your CSS code, you can use our [online CSS compressor and optimizer](#) based on csstidy. If you want to create a linear or radial gradient as background or border, check our [CSS Gradient Generator](#).

Hey! You found this booklet interesting? Support Converting Colors with the new Membership Option!

The pro membership hides all ads, plus gives you double the colors in the color bucket, and more awesome pro features!

[Learn more, Memberships starting at \\$2.50/m!](#)

**Follow me
on Twitter!**

@ConvertingColor