

Converting Colors

HunterLab(78.4400, 1.6264,
5.2469)

Have a look what the booklet for
HunterLab(78.4400, 1.6264, 5.2469)
contains.

HunterLab(78.4258, 1.4406, 5.1630)	3
<i>Conversions</i>	4
<i>Details</i>	6
<i>Harmonies</i>	12
<i>Previews</i>	24
<i>Color Blindness Simulation</i>	28
<i>CSS Examples</i>	31

Color

**HunterLab(78.4258, 1.4406,
5.1630)**

Conversions

Conversions Part 1

Format	Color
Hex	DACACC
RGB	218, 202, 204
RGB Percent	85%, 79%, 80%
CMY	0.1451, 0.2078, 0.2000
CMYK	0.00, 0.07, 0.06, 0.15
HSL	353°, 18%, 82%
HSV	353°, 7%, 85%
XYZ	60.9330, 61.5061, 65.7870
YIQ	207.0120, 8.8940, 4.0140

Conversions

Conversions Part 2

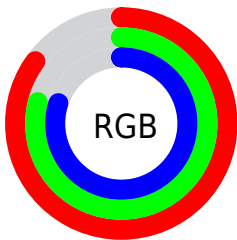
Format	Color
RYB	218, 202, 204
Decimal	14338764
CIELab	82.65, 5.91, 1.01
CIElCh	83, 5.997, 9.681
Yxy	61.5088, 0.3237, 0.3268
Android (android.graphics.Color)	4292528844 (0xFFDACACC)
YUV	207.0120, -1.4849, 9.6365
Hunter-Lab	78.4258, 1.4406, 5.1630

Details

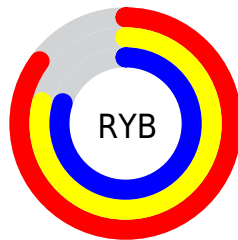
The HunterLab color $78.4258, 1.4406, 5.1630$ is a light color, and the websafe version is hex `CCCCCC`. A complement of this color would be $82.2549, -9.7797, 3.6837$, and the grayscale version is $79.0012, -4.2153, 4.2923$.

A 20% lighter version of the original color is $100.0000, -5.3358, 5.4332$, and $55.8286, 2.0526, 3.7941$ is the 20% darker color. If you saturate the color by 10%, you get $71.5055, 9.7288, 6.2098$, and if you desaturate by 10%, it is $85.6997, -6.5755, 4.3547$.

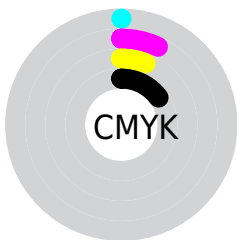
Distribution



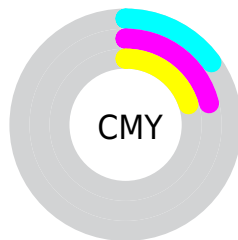
- Red (85%)
- Green (79%)
- Blue (80%)



- Red (85%)
- Yellow (79%)
- Blue (80%)



- Cyan (0%)
- Magenta (7%)
- Yellow (6%)
- Black (15%)



- Cyan (15%)
- Magenta (21%)
- Yellow (20%)

Brightness & Saturation Gradients

These gradients show how the HunterLab color 78.4258, 1.4406, 5.1630 changes by changing the brightness by 10 percent. The first figure shows a shift by +10% for each color and the second figure -10%.

Similar to the brightness gradients but the following saturation gradients show a change of the HunterLab color 78.4258, 1.4406, 5.1630 by changing the saturation by 10% instead.

■ 78.4258, 1.4406,
5.1630

■ 78.4258, 1.4406,
5.1630

207.3974, -3.3467,
12.5307

■ 66.8101, 1.7745,
4.4848

103.4482, 0.6319,
6.6138

■ 55.8307, 2.0604,
3.8372

116.7979, 0.1673,
7.3814

■ 45.5290, 2.2911,
3.2232

130.6772, -0.3348,
8.1763

■ 35.9527, 2.4599,
2.6445

145.0664, -0.8724,
8.9975

■ 27.1617, 2.5576,
2.1034

159.9482, -1.4439,
9.8443

■ 19.2337, 2.5713,
1.6022

175.3066, -2.0476,

■ 12.2753, 2.4808,

10.7159

1.1437

191.1274, -2.6823,
11.6116

■ 5.4179, 4.4655,
1.0665

0.0000, NaN, NaN

■ 78.4258, 1.4406,
5.1630

■ 78.4258, 1.4406,
5.1630

■ 71.5055, 9.7288,
6.2098

■ 85.6997, -6.5755,
4.3547

■ 64.9962, 18.2947,
7.5307

■ 93.2726, -14.3362,
3.7442

■ 58.9779, 27.0857,
9.1643

■ 96.7707, -16.7591,
1.3714

■ 53.5469, 35.9593,
11.1335

■ 48.8167, 44.6247,
13.4255

■ 44.9090, 52.5953,
15.9631

■ 41.9333, 59.2089,
18.5787

■ 39.9496, 63.7984,
21.0227

■ 38.9069, 66.0689,
23.0174

Harmonies

Analogous

The Analogous color harmony consists of three colors that are next to each other on the color wheel.



78.4275, 1.1610, 2.3864



78.4258, 1.4406, 5.1630



78.4275, 0.1913, 7.6123

Triad

The Triadic color harmony groups three colors that are evenly spaced from another and form a triangle on the color wheel.



78.4275, 1.4385, 5.1643



78.4275, -7.7515, 8.2800



78.4275, -6.1344, -0.9213

Complementary

The Complementary color scheme is a pair of colors which are on the opposite of each other on the color wheel.



78.4258, 1.4406, 5.1630



82.2549, -9.7797, 3.6837

Split Complementary

Split-complementary colors differ from the complementary color scheme. The scheme consists of three colors, the original color and two neighbors of the complement color.



78.4275, -8.4750, 0.7718



78.4258, 1.4406, 5.1630



78.4275, -9.3991, 6.1061

Square

The Square scheme is like the rectangle color scheme, but the four colors are evenly spaced on the color wheel.



78.4275, 1.4385, 5.1643



78.4275, -5.1334, 9.3671



78.4275, -9.6620, 3.3631



78.4275, -3.2399, -1.1961

Rectangle

The Rectangle color scheme consists of four colors that form a rectangle on the color wheel.



78.4258, 1.4406, 5.1630



78.4275, -1.3264, 8.7529



78.4275, -9.6620, 3.3631



78.4275, -7.0109, -0.4963

Sweetspot

The Sweet Spot groups the original color and five complimentary colors.



78.4275, 1.4385, 5.1643



98.2369, -3.4134, 5.6211



78.6666, 3.1445, -1.4633



45.4891, -1.6234, 2.5961

0.0000, NaN, NaN



46.2646, -2.4686, 2.5136

Same Dimension

The Same Dimension uses a secret algorithm to generate beautiful new colors.



78.4275, 1.4385, 5.1643



92.1925, 3.4186, 6.3636



80.1365, -1.9159, 8.0025



36.1633, 1.4829, 2.5205



29.9774, 51.5259, 17.9085



7.6881, 13.3294, 3.7023

Inverse Universe

The Inverse Universe completely reimagines the original color for something new.



78.4275, 1.4385, 5.1643



92.1925, 3.4186, 6.3636



80.4824, -6.4610, 0.6153



36.1633, 1.4829, 2.5205



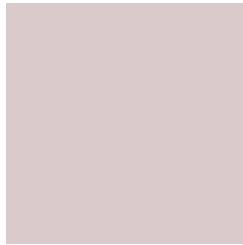
29.9774, 51.5259, 17.9085



7.6881, 13.3294, 3.7023

Previews

White Background



This preview shows how the HunterLab color 78.4258, 1.4406, 5.1630 looks on a white background.

Color Contrast Check

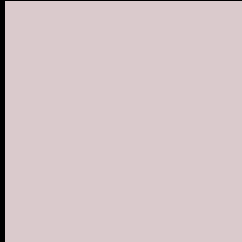
Large Text (above 18pt) WCAG AA × Fail

Any Text WCAG AA × Fail

Large Text (above 18pt) WCAG AAA × Fail

Any Text WCAG AAA × Fail

Black Background



This preview shows how the HunterLab color 78.4258, 1.4406, 5.1630 looks on a black background.

Color Contrast Check

Large Text (above 18pt) WCAG AA ✓ Pass

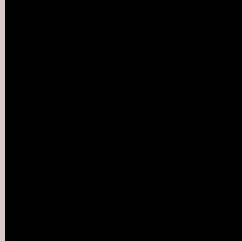
Any Text WCAG AA ✓ Pass

Large Text (above 18pt) WCAG AAA ✓ Pass

Any Text WCAG AAA ✓ Pass

If you want to check with other color combinations, try the [Color Contrast Checker](#).

HunterLab 78.4258, 1.4406, 5.1630 Background



This preview shows how black text looks on a background with the HunterLab color 78.4258, 1.4406, 5.1630.



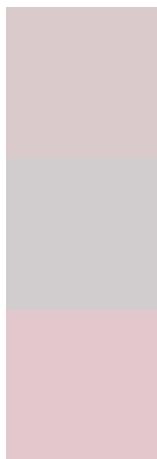
This preview shows how white text looks on a background with the HunterLab color 78.4258, 1.4406,

5.1630.

Color Blindness Simulation

Color vision deficiency is a very complex topic, and I could not describe the different causes any better than Wikipedia does, so if you want to learn more, you should check out their [article about color blindness](#).

Dichromacy



Original Color

78.4258, 1.4406, 5.1630

Protanopia

78.5329, -2.7241, 4.2593

Deuteranopia

78.3731, 5.8941, 4.7021



Tritanopia

78.4105, 5.2077, -0.7164

Trichromacy



Original Color

78.4258, 1.4406, 5.1630

Protanomaly

78.4797, -1.4084, 4.6993

Deuteranomaly

78.3609, 4.3391, 4.6606

Tritanomaly

78.4773, 3.6495, 1.3628

Monochromacy



Original Color

78.4258, 1.4406, 5.1630

Achromatopsia

78.9912, -4.2148, 4.2917

Achromatomaly

78.7196, -2.0790, 4.4902

CSS Examples

Text

The CSS property to change the color of the text to HunterLab 78.4258, 1.4406, 5.1630 is called "color". The color property can be set on classes, ids or directly on the HTML element.

This example shows how text in the color `rgb(218, 202, 204)` looks like.

```
.text, #text, p{  
    color:rgb(218, 202, 204)  
}
```

If you want to add a text shadow in that color use the text-shadow property, you can generate a text shadow directly with our [CSS Text Shadow Generator](#).

Here you see how black text with a 4 pixel rgb(218, 202, 204) colored shadow looks like.

```
.shadow{ text-shadow: 4px 4px 2px rgb(218, 202, 204) }
```

Border

The CSS property to change the border of an element to HunterLab 78.4258, 1.4406, 5.1630 is called "border".

The border property can be set on classes, ids or directly on the HTML element.

This example shows the color as border, it can be applied via the CSS property "border" or "border-color".

```
.border, #border, table{ border:4px solid rgb(218, 202, 204) }
```


If only the border color should be changed use the property border-color.

```
.border{ border-color:rgb(218, 202, 204) }
```

If you want to add a box shadow in that color use:

Here you see how a box with a 4 pixel rgb(218, 202, 204) colored shadow looks like.

```
.boxshadow{ -moz-box-shadow:4px 4px 4px  
4px rgb(218, 202, 204); -webkit-box-  
shadow:4px 4px 4px 4px rgb(218, 202, 204);  
box-shadow:4px 4px 4px 4px rgb(218, 202,  
204) }
```

Background

The CSS property to change the background color of an element to HunterLab 78.4258, 1.4406, 5.1630 is called "background". The background property can be set on classes, ids or directly on the HTML element.

```
.background, #background, body{  
background: rgb(218, 202, 204) }
```

If only the background color should be changed can be used:

```
.background{ background-color: rgb(218,  
202, 204) }
```

This example shows the color as background, it is applied via the CSS property "background".

To optimize and compress your CSS code, you can use our [online CSS compressor and optimizer](#) based on csstidy. If you want to create a linear or radial gradient as background or border, check our [CSS Gradient Generator](#).

Hey! You found this booklet interesting? Support Converting Colors with the new Membership Option!

The pro membership hides all ads, plus gives you double the colors in the color bucket, and more awesome pro features!

[Learn more, Memberships starting at \\$2.50/m!](#)

**Follow me
on Twitter!**

@ConvertingColor