

# Converting Colors

HunterLab(78.5442, 1.7050,  
8.0296)

Have a look what the booklet for  
HunterLab(78.5442, 1.7050, 8.0296)  
contains.

<b>HunterLab(78.5433, 1.4807, 8.0941)</b> .....	3
<b><i>Conversions</i></b> .....	4
<b><i>Details</i></b> .....	6
<b><i>Harmonies</i></b> .....	12
<b><i>Previews</i></b> .....	24
<b><i>Color Blindness Simulation</i></b> .....	28
<b><i>CSS Examples</i></b> .....	31

# Color

**HunterLab(78.5433, 1.4807,  
8.0941)**

# Conversions

## Conversions Part 1

<b>Format</b>	<b>Color</b>
Hex	DDCAC6
RGB	221, 202, 198
RGB Percent	87%, 79%, 78%
CMY	0.1333, 0.2078, 0.2235
CMYK	0.00, 0.09, 0.10, 0.13
HSL	10°, 25%, 82%
HSV	10°, 10%, 87%
XYZ	61.1324, 61.6905, 62.1116
YIQ	207.2250, 12.6080, 2.7840

# Conversions

## Conversions Part 2

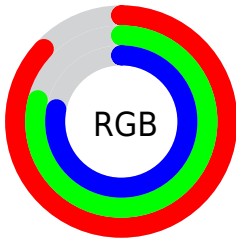
Format	Color
R <sub>Y</sub> B	221, 203, 198
Decimal	14535366
CIE Lab	82.75, 5.96, 4.39
CIE LCh	83, 7.398, 36.373
Yxy	61.6932, 0.3306, 0.3336
Android (android.graphics.Color)	4292725446 (0xFFDDCAC6)
YUV	207.2250, -4.5479, 12.0807
Hunter-Lab	78.5433, 1.4807, 8.0941

# Details

The HunterLab color  $78.5433, 1.4807, 8.0941$  is a light color, and the websafe version is hex `CCCCCC`. A complement of this color would be  $81.7623, -9.5784, 0.6082$ , and the grayscale version is  $79.1043, -4.2208, 4.2979$ .

A 20% lighter version of the original color is  $100.0000, -5.3358, 5.4332$ , and  $55.9468, 2.1158, 6.5489$  is the 20% darker color. If you saturate the color by 10%, you get  $72.5819, 7.5909, 11.3468$ , and if you desaturate by 10%, it is  $84.7745, -4.3081, 4.7573$ .

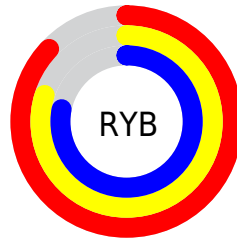
# Distribution



Red (87%)

Green (79%)

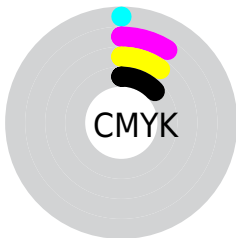
Blue (78%)



Red (87%)

Yellow (80%)

Blue (78%)

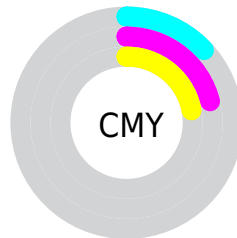


Cyan (0%)

Magenta (9%)

Yellow (10%)

Black (13%)



Cyan (13%)

Magenta (21%)

Yellow (22%)

# Brightness & Saturation Gradients

These gradients show how the HunterLab color 78.5433, 1.4807, 8.0941 changes by changing the brightness by 10 percent. The first figure shows a shift by +10% for each color and the second figure -10%.

Similar to the brightness gradients but the following saturation gradients show a change of the HunterLab color 78.5433, 1.4807, 8.0941 by changing the saturation by 10% instead.



■ 78.5433, 1.4807,  
8.0941

■ 78.5433, 1.4807,  
8.0941

207.5599, -3.2940,  
16.6449

■ 66.9215, 1.8128,  
7.2535

103.5770, 0.6750,  
9.8453

■ 55.9357, 2.0970,  
6.4335

116.9321, 0.2119,  
10.7532

■ 45.6270, 2.3259,  
5.6349

130.8165, -0.2887,  
11.6827

■ 36.0433, 2.4927,  
4.8565

145.2107, -0.8250,  
12.6336

■ 27.2443, 2.5885,  
4.0960

160.0972, -1.3951,  
13.6056

■ 19.3073, 2.6001,  
3.3488

175.4602, -1.9975,

■ 12.3387, 2.5073,

14.5984

2.6051

191.2855, -2.6308,  
15.6116

■ 5.5176, 4.4098,  
3.5965

0.0000, NaN, NaN

■ 78.5433, 1.4807,  
8.0941

■ 78.5433, 1.4807,  
8.0941

■ 72.5819, 7.5909,  
11.3468

■ 84.7745, -4.3081,  
4.7573

■ 66.9251, 14.0540,  
14.4777

■ 91.2372, -9.8021,  
1.3552

■ 61.6234, 20.8727,  
17.4372

■ 97.0115, -15.8936,  
1.6789

■ 56.7348, 28.0142,  
20.1526

■ 52.3270, 35.3811,  
22.5244

■ 48.4746, 42.7792,  
24.4271

■ 45.2527, 49.8931,  
25.7254

■ 42.7246, 56.2920,  
26.3140

■ 40.9743, 61.2841,  
26.3211

# Harmonies

## Analogous

The Analogous color harmony consists of three colors that are next to each other on the color wheel.



78.5450, 2.8307, 5.0056



78.5433, 1.4807, 8.0941



78.5450, -1.3908, 10.0936

# Triad

The Triadic color harmony groups three colors that are evenly spaced from another and form a triangle on the color wheel.



78.5450, 1.4785, 8.0954



78.5450, -10.4606, 6.8788



78.5450, -3.4224, -2.5817

# Complementary

The Complementary color scheme is a pair of colors which are on the opposite of each other on the color wheel.



78.5433, 1.4807, 8.0941



81.7623, -9.5784, 0.6082

# Split Complementary

Split-complementary colors differ from the complementary color scheme. The scheme consists of three colors, the original color and two neighbors of the complement color.



78.5450, -6.9608, -2.0250



78.5433, 1.4807, 8.0941



78.5450, -10.9824, 3.5382

# Square

The Square scheme is like the rectangle color scheme, but the four colors are evenly spaced on the color wheel.



78.5450, 1.4785, 8.0954



78.5450, -8.2737, 9.4137



78.5450, -9.7122, 0.2534



78.5450, -0.0317, -1.2353



# Rectangle

The Rectangle color scheme consists of four colors that form a rectangle on the color wheel.



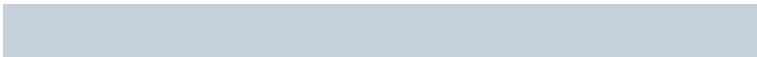
78.5433, 1.4807, 8.0941



78.5450, -3.7551, 10.5904



78.5450, -9.7122, 0.2534



78.5450, -4.6343, -2.6118

# Sweetspot

The Sweet Spot groups the original color and five complimentary colors.



78.5450, 1.4785, 8.0954



97.7506, -3.3203, 6.6302



77.9613, 6.8043, -1.8524



44.9478, -1.2844, 3.2149

0.0000, NaN, NaN



46.2646, -2.4686, 2.5136

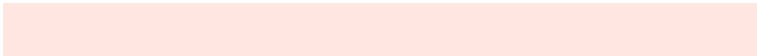


# Same Dimension

The Same Dimension uses a secret algorithm to generate beautiful new colors.



78.5450, 1.4785, 8.0954



91.1621, 2.9252, 10.1743



81.9796, -4.3504, 11.7993



36.6280, 0.4158, 3.5970



31.4132, 46.1220, 20.1641



8.6717, 9.7097, 5.5134

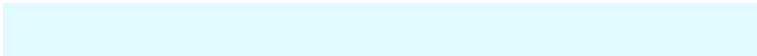


# Inverse Universe

The Inverse Universe completely reimagines the original color for something new.



81.7623, -9.5784, 0.6082



95.5507, -12.1625, -0.0399



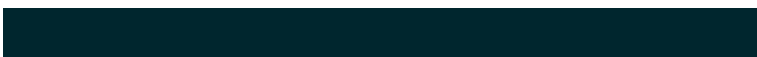
78.2365, -3.8270, -3.6992



37.9786, -4.2249, 0.4542



47.6883, -18.1901, -20.3391

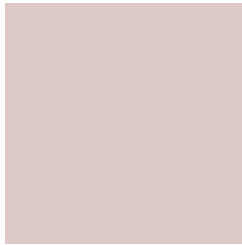


12.5575, -5.1826, -4.5080



# Previews

## White Background



This preview shows how the HunterLab color 78.5433, 1.4807, 8.0941 looks on a white background.

## Color Contrast Check

Large Text (above 18pt) WCAG AA × Fail

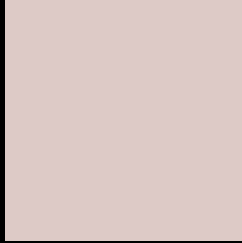
Any Text WCAG AA × Fail

Large Text (above 18pt) WCAG AAA × Fail

Any Text WCAG AAA × Fail



# Black Background



This preview shows how the HunterLab color 78.5433, 1.4807, 8.0941 looks on a black background.

## Color Contrast Check

Large Text (above 18pt) WCAG AA ✓ Pass

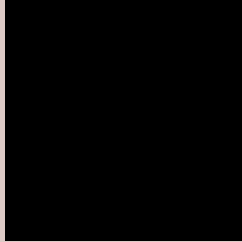
Any Text WCAG AA ✓ Pass

Large Text (above 18pt) WCAG AAA ✓ Pass

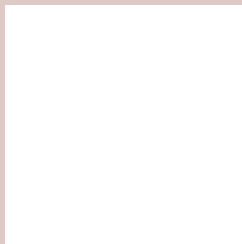
Any Text WCAG AAA ✓ Pass

If you want to check with other color combinations, try the [Color Contrast Checker](#).

## HunterLab 78.5433, 1.4807, 8.0941 Background



This preview shows how black text looks on a background with the HunterLab color 78.5433, 1.4807, 8.0941.



This preview shows how white text looks on a background with the HunterLab color 78.5433, 1.4807,



# Color Blindness Simulation

Color vision deficiency is a very complex topic, and I could not describe the different causes any better than Wikipedia does, so if you want to learn more, you should check out their [article about color blindness](#).

## Dichromacy



### Original Color

78.5433, 1.4807, 8.0941

### Protanopia

78.5377, -3.0719, 7.0890

### Deuteranopia

78.5037, 5.9694, 7.6698



## Tritanopia

78.3844, 6.5680, -0.2139

# Trichromacy



## Original Color

78.5433, 1.4807, 8.0941

## Protanomaly

78.5852, -1.4070, 7.6332

## Deuteranomaly

78.4862, 4.3988, 7.6224

## Tritanomaly

78.3847, 4.6689, 2.7549

# Monochromacy



## Original Color

78.5433, 1.4807, 8.0941

## Achromatopsia

78.9912, -4.2148, 4.2917

## Achromatomaly

78.7523, -2.0886, 5.4815

# CSS Examples

## Text

The CSS property to change the color of the text to HunterLab 78.5433, 1.4807, 8.0941 is called "color". The color property can be set on classes, ids or directly on the HTML element.

This example shows how text in the color `rgb(221, 202, 198)` looks like.

```
.text, #text, p{  
    color:rgb(221, 202, 198)  
}
```

If you want to add a text shadow in that color use the text-shadow property, you can generate a text shadow directly with our [CSS Text Shadow Generator](#).

Here you see how black text with a 4 pixel rgb(221, 202, 198) colored shadow looks like.

```
.shadow{ text-shadow: 4px 4px 2px rgb(221, 202, 198) }
```

## Border

The CSS property to change the border of an element to HunterLab 78.5433, 1.4807, 8.0941 is called "border". The border property can be set on classes, ids or directly on the HTML element.

This example shows the color as border, it can be applied via the CSS property "border" or "border-color".

```
.border, #border, table{ border:4px solid rgb(221, 202, 198) }
```



If only the border color should be changed use the property `border-color`.

```
.border{ border-color:rgb(221, 202, 198) }
```

If you want to add a box shadow in that color use:

Here you see how a box with a 4 pixel `rgb(221, 202, 198)` colored shadow looks like.

```
.boxshadow{ -moz-box-shadow:4px 4px 4px  
4px rgb(221, 202, 198); -webkit-box-  
shadow:4px 4px 4px 4px rgb(221, 202, 198);  
box-shadow:4px 4px 4px 4px rgb(221, 202,  
198) }
```

# Background

The CSS property to change the background color of an element to HunterLab 78.5433, 1.4807, 8.0941 is called "background". The background property can be set on classes, ids or directly on the HTML element.

```
.background, #background, body{  
background: rgb(221, 202, 198) }
```

If only the background color should be changed can be used:

```
.background{ background-color: rgb(221,  
202, 198) }
```

This example shows the color as background, it is applied via the CSS property "background".

To optimize and compress your CSS code, you can use our [online CSS compressor and optimizer](#) based on csstidy. If you want to create a linear or radial gradient as background or border, check our [CSS Gradient Generator](#).

Hey! You found this booklet interesting? Support Converting Colors with the new Membership Option!

The pro membership hides all ads, plus gives you double the colors in the color bucket, and more awesome pro features!

**[Learn more, Memberships starting at \\$2.50/m!](#)**

**Follow me  
on Twitter!**

@ConvertingColor