

Converting Colors

HunterLab(78.5533, 3.9795,
9.5046)

Have a look what the booklet for
HunterLab(78.5533, 3.9795, 9.5046)
contains.

HunterLab(78.4727, 4.1195, 9.4177)	3
<i>Conversions</i>	4
<i>Details</i>	6
<i>Harmonies</i>	12
<i>Previews</i>	24
<i>Color Blindness Simulation</i>	28
<i>CSS Examples</i>	31

Color

**HunterLab(78.4727, 4.1195,
9.4177)**

Conversions

Conversions Part 1

Format	Color
Hex	E3C8C3
RGB	227, 200, 195
RGB Percent	89%, 78%, 76%
CMY	0.1098, 0.2157, 0.2353
CMYK	0.00, 0.12, 0.14, 0.11
HSL	9°, 36%, 83%
HSV	9°, 14%, 89%
XYZ	62.1832, 61.5796, 60.2385
YIQ	207.5030, 17.6970, 4.1690

Conversions

Conversions Part 2

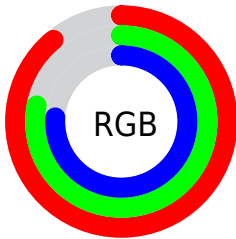
Format	Color
R _Y B	227, 201, 195
Decimal	14928067
CIE Lab	82.69, 8.67, 5.97
CIE LCh	83, 10.527, 34.547
Yxy	61.5824, 0.3379, 0.3347
Android (android.graphics.Color)	4293118147 (0xFFE3C8C3)
YUV	207.5030, -6.1640, 17.0989
Hunter-Lab	78.4727, 4.1195, 9.4177

Details

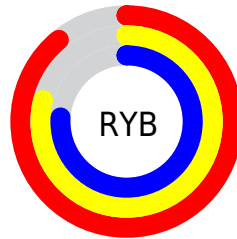
The HunterLab color $78.4727, 4.1195, 9.4177$ is a light color, and the websafe version is hex FFCCCC . A complement of this color would be $83.3003, -11.8649, -0.6049$, and the grayscale version is $79.2287, -4.2274, 4.3046$.

A 20% lighter version of the original color is $99.9041, -5.8614, 6.8020$, and $55.8021, 4.3279, 7.6864$ is the 20% darker color. If you saturate the color by 10%, you get $72.3257, 10.7710, 12.6356$, and if you desaturate by 10%, it is $84.9246, -2.1875, 6.1266$.

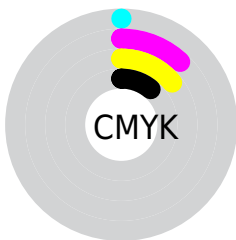
Distribution



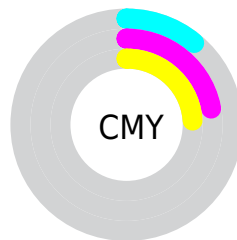
- Red (89%)
- Green (78%)
- Blue (76%)



- Red (89%)
- Yellow (79%)
- Blue (76%)



- Cyan (0%)
- Magenta (12%)
- Yellow (14%)
- Black (11%)



- Cyan (11%)
- Magenta (22%)
- Yellow (24%)

Brightness & Saturation Gradients


These gradients show how the HunterLab color 78.4727, 4.1195, 9.4177 changes by changing the brightness by 10 percent. The first figure shows a shift by +10% for each color and the second figure -10%.

Similar to the brightness gradients but the following saturation gradients show a change of the HunterLab color 78.4727, 4.1195, 9.4177 by changing the saturation by 10% instead.

 78.4727, 4.1195,
9.4177

 78.4727, 4.1195,
9.4177


207.4623, 0.2971,
18.5313

 66.8546, 4.3236,
8.4992

103.4996, 3.5525,
11.3125

 55.8727, 4.4731,
7.5963


116.8515, 3.2018,
12.2872

 45.5681, 4.5593,
6.7085


130.7328, 2.8094,
13.2808

 35.9889, 4.5739,
5.8332

145.1240, 2.3778,
14.2934

 27.1947, 4.5056,
4.9656

160.0077, 1.9091,
15.3248

 19.2631, 4.3384,
4.0974

175.3680, 1.4050,

 12.3006, 4.0477,

16.3750

3.2116

191.1906, 0.8672,
17.4439

■ 5.4580, 6.6311,
3.8206

0.0000, NaN, NaN

■ 78.4727, 4.1195,
9.4177

■ 78.4727, 4.1195,
9.4177

■ 72.3257, 10.7710,
12.6356

■ 84.9246, -2.1875,
6.1266

■ 66.5260, 17.7919,
15.7384

■ 91.6372, -8.1747,
2.7825

■ 61.1328, 25.1677,
18.6696

■ 97.5044, -14.1294,
2.3058

■ 56.2148, 32.8314,
21.3443

■ 51.8503, 40.6278,
23.6465

■ 48.1228, 48.2789,
25.4337

■ 45.1110, 55.3703,
26.5622

■ 42.8701, 61.3929,
26.9456

■ 41.9077, 64.2157,
26.9476

Harmonies

Analogous

The Analogous color harmony consists of three colors that are next to each other on the color wheel.



78.4744, 5.9071, 5.0134



78.4727, 4.1195, 9.4177



78.4744, 0.1020, 12.2964

Triad

The Triadic color harmony groups three colors that are evenly spaced from another and form a triangle on the color wheel.



78.4744, 4.1171, 9.4190



78.4744, -12.9186, 8.2061



78.4744, -3.4062, -5.6917

Complementary

The Complementary color scheme is a pair of colors which are on the opposite of each other on the color wheel.



78.4727, 4.1195, 9.4177



83.3003, -11.8649, -0.6049

Split Complementary

Split-complementary colors differ from the complementary color scheme. The scheme consists of three colors, the original color and two neighbors of the complement color.



78.4744, -8.3944, -4.7018



78.4727, 4.1195, 9.4177



78.4744, -13.8037, 3.5224

Square

The Square scheme is like the rectangle color scheme, but the four colors are evenly spaced on the color wheel.



78.4744, 4.1171, 9.4190



78.4744, -9.7185, 11.6284



78.4744, -12.1680, -1.2500



78.4744, 1.4930, -3.8745

Rectangle

The Rectangle color scheme consists of four colors that form a rectangle on the color wheel.



78.4727, 4.1195, 9.4177



78.4744, -3.2500, 13.0673



78.4744, -12.1680, -1.2500



78.4744, -5.1284, -5.6771

Sweetspot

The Sweet Spot groups the original color and five complimentary colors.



78.4744, 4.1171, 9.4190



96.9497, -2.5454, 6.9634



77.8760, 11.3426, -4.5362



44.5905, -0.9319, 3.3543

0.0000, NaN, NaN



46.2646, -2.4686, 2.5136

Same Dimension

The Same Dimension uses a secret algorithm to generate beautiful new colors.



78.4744, 4.1171, 9.4190



87.3850, 6.9415, 11.8632



83.2353, -4.0497, 14.4408



38.3797, 0.5435, 3.7238



32.1724, 48.4947, 20.6735



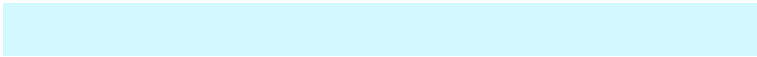
9.3645, 11.2856, 5.9679

Inverse Universe

The Inverse Universe completely reimagines the original color for something new.



83.3003, -11.8649, -0.6049



94.0404, -15.1202, -1.9652



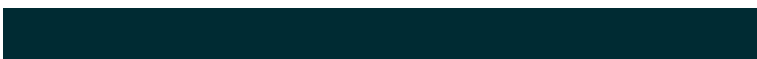
78.3505, -3.8575, -6.7825



39.9152, -4.5365, 0.5354



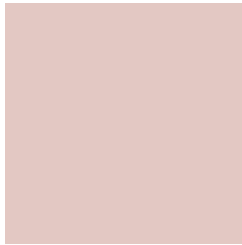
50.2344, -20.0896, -19.4210



14.0306, -5.9496, -4.6935

Previews

White Background



This preview shows how the HunterLab color 78.4727, 4.1195, 9.4177 looks on a white background.

Color Contrast Check

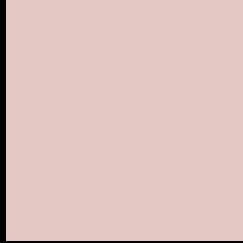
Large Text (above 18pt) WCAG AA × Fail

Any Text WCAG AA × Fail

Large Text (above 18pt) WCAG AAA × Fail

Any Text WCAG AAA × Fail

Black Background



This preview shows how the HunterLab color 78.4727, 4.1195, 9.4177 looks on a black background.

Color Contrast Check

Large Text (above 18pt) WCAG AA ✓ Pass

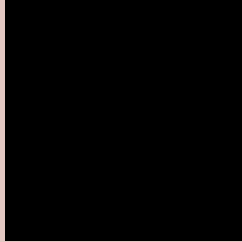
Any Text WCAG AA ✓ Pass

Large Text (above 18pt) WCAG AAA ✓ Pass

Any Text WCAG AAA ✓ Pass

If you want to check with other color combinations, try the [Color Contrast Checker](#).

HunterLab 78.4727, 4.1195, 9.4177 Background



This preview shows how black text looks on a background with the HunterLab color 78.4727, 4.1195, 9.4177.



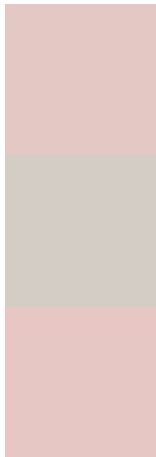
This preview shows how white text looks on a background with the HunterLab color 78.4727, 4.1195,

9.4177.

Color Blindness Simulation

Color vision deficiency is a very complex topic, and I could not describe the different causes any better than Wikipedia does, so if you want to learn more, you should check out their [article about color blindness](#).

Dichromacy



Original Color

78.4727, 4.1195, 9.4177

Protanopia

78.5728, -3.0684, 8.0479

Deuteranopia

78.4920, 5.6965, 9.4669



Tritanopia

78.3547, 9.3375, 0.8112

Trichromacy



Original Color

78.4727, 4.1195, 9.4177

Protanomaly

78.4186, -0.5458, 8.3735

Deuteranomaly

78.3869, 5.3437, 9.3436

Tritanomaly

78.3188, 7.2794, 4.1820

Monochromacy



Original Color

78.4727, 4.1195, 9.4177

Achromatopsia

79.4202, -4.2377, 4.3151

Achromatomaly

79.0073, -1.2707, 6.2620

CSS Examples

Text

The CSS property to change the color of the text to HunterLab 78.4727, 4.1195, 9.4177 is called "color". The color property can be set on classes, ids or directly on the HTML element.

This example shows how text in the color `rgb(227, 200, 195)` looks like.

```
.text, #text, p{  
    color:rgb(227, 200, 195)  
}
```

If you want to add a text shadow in that color use the text-shadow property, you can generate a text shadow directly with our [CSS Text Shadow Generator](#).

Here you see how black text with a 4 pixel rgb(227, 200, 195) colored shadow looks like.

```
.shadow{ text-shadow: 4px 4px 2px rgb(227, 200, 195) }
```

Border

The CSS property to change the border of an element to HunterLab 78.4727, 4.1195, 9.4177 is called "border".

The border property can be set on classes, ids or directly on the HTML element.

This example shows the color as border, it can be applied via the CSS property "border" or "border-color".

```
.border, #border, table{ border:4px solid rgb(227, 200, 195) }
```


If only the border color should be changed use the property `border-color`.

```
.border{ border-color:rgb(227, 200, 195) }
```

If you want to add a box shadow in that color use:

Here you see how a box with a 4 pixel `rgb(227, 200, 195)` colored shadow looks like.

```
.boxshadow{ -moz-box-shadow:4px 4px 4px 4px rgb(227, 200, 195); -webkit-box-shadow:4px 4px 4px 4px rgb(227, 200, 195); box-shadow:4px 4px 4px 4px rgb(227, 200, 195) }
```

Background

The CSS property to change the background color of an element to HunterLab 78.4727, 4.1195, 9.4177 is called "background". The background property can be set on classes, ids or directly on the HTML element.

```
.background, #background, body{  
background: rgb(227, 200, 195) }
```

If only the background color should be changed can be used:

```
.background{ background-color: rgb(227,  
200, 195) }
```

This example shows the color as background, it is applied via the CSS property "background".

To optimize and compress your CSS code, you can use our [online CSS compressor and optimizer](#) based on csstidy. If you want to create a linear or radial gradient as background or border, check our [CSS Gradient Generator](#).

Hey! You found this booklet interesting? Support Converting Colors with the new Membership Option!

The pro membership hides all ads, plus gives you double the colors in the color bucket, and more awesome pro features!

[Learn more, Memberships starting at \\$2.50/m!](#)

**Follow me
on Twitter!**

@ConvertingColor