

Converting Colors

HunterLab(78.5749, 8.2648,
7.4944)

Have a look what the booklet for
HunterLab(78.5749, 8.2648, 7.4944)
contains.

HunterLab(78.6651, 8.0670, 7.4293)	3
<i>Conversions</i>	4
<i>Details</i>	6
<i>Harmonies</i>	12
<i>Previews</i>	24
<i>Color Blindness Simulation</i>	28
<i>CSS Examples</i>	31

Color

**HunterLab(78.6651, 8.0670,
7.4293)**

Conversions

Conversions Part 1

Format	Color
Hex	E9C6C8
RGB	233, 198, 200
RGB Percent	91%, 78%, 78%
CMY	0.0863, 0.2235, 0.2157
CMYK	0.00, 0.15, 0.14, 0.09
HSL	357°, 44%, 85%
HSV	357°, 15%, 91%
XYZ	64.2237, 61.8820, 63.2031
YIQ	208.6930, 20.2180, 8.0420

Conversions

Conversions Part 2

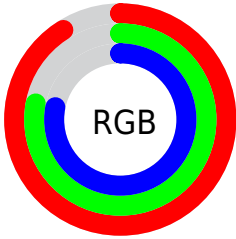
Format	Color
R _{YB}	233, 198, 200
Decimal	15320776
CIE _{Lab}	82.85, 12.67, 3.60
CIE _{LCh}	83, 13.173, 15.849
Y _{xy}	61.8847, 0.3393, 0.3269
Android (android.graphics.Color)	4293510856 (0xFFE9C6C8)
Y _{UV}	208.6930, -4.2856, 21.3172
Hunter-Lab	78.6651, 8.0670, 7.4293

Details

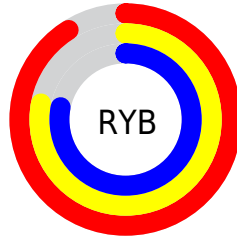
The HunterLab color $78.6651, 8.0670, 7.4293$ is a light color, and the websafe version is hex $FFCCCC$. A complement of this color would be $87.2094, -15.7799, 2.0610$, and the grayscale version is $79.7310, -4.2542, 4.3319$.

A 20% lighter version of the original color is $100.0000, -5.3358, 5.4332$, and $56.0080, 8.0924, 5.8659$ is the 20% darker color. If you saturate the color by 10%, you get $71.4736, 17.0651, 9.3876$, and if you desaturate by 10%, it is $86.2964, -0.5948, 5.6981$.

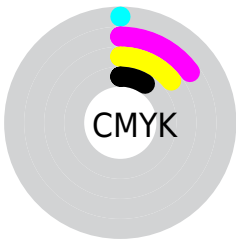
Distribution



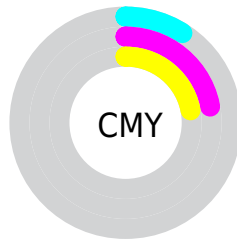
- Red (91%)
- Green (78%)
- Blue (78%)



- Red (91%)
- Yellow (78%)
- Blue (78%)



- Cyan (0%)
- Magenta (15%)
- Yellow (14%)
- Black (9%)



- Cyan (9%)
- Magenta (22%)
- Yellow (22%)

Brightness & Saturation Gradients

These gradients show how the HunterLab color 78.6651, 8.0670, 7.4293 changes by changing the brightness by 10 percent. The first figure shows a shift by +10% for each color and the second figure -10%.

Similar to the brightness gradients but the following saturation gradients show a change of the HunterLab color 78.6651, 8.0670, 7.4293 by changing the saturation by 10% instead.

■ 78.6651, 8.0670,
7.4293

■ 78.6651, 8.0670,
7.4293

207.7283, 5.6225,
15.7034

■ 67.0370, 8.0873,
6.6269

103.7106, 7.8442,
9.1100

■ 56.0445, 8.0440,
5.8476

117.0712, 7.6557,
9.9850

■ 45.7287, 7.9266,
5.0926

130.9609, 7.4199,
10.8831

■ 36.1373, 7.7251,
4.3615

145.3602, 7.1398,
11.8036

■ 27.3299, 7.4258,
3.6532

160.2516, 6.8179,
12.7464

■ 19.3836, 7.0096,
2.9649

175.6195, 6.4565,

■ 12.4045, 6.4489,

13.7108

2.2900

191.4494, 6.0574,
14.6966

■ 5.6191, 9.5272,
2.9598

0.0000, NaN, NaN

■ 78.6651, 8.0670,
7.4293

■ 78.6651, 8.0670,
7.4293

■ 71.4736, 17.0651,
9.3876

■ 86.2964, -0.5948,
5.6981

■ 64.7997, 26.3773,
11.5889

■ 94.2967, -8.9284,
4.1626

■ 58.7480, 35.8838,
14.0337

■ 98.0121, -12.3216,
2.9483

■ 53.4413, 45.3176,
16.6790

■ 49.0150, 54.1991,
19.4118

■ 45.5962, 61.8313,
22.0311

■ 43.2656, 67.4461,
24.2699

■ 42.0050, 70.5433,
25.8806

■ 41.6577, 71.4116,
26.3635

Harmonies

Analogous

The Analogous color harmony consists of three colors that are next to each other on the color wheel.



78.6669, 8.1652, 1.3483



78.6651, 8.0670, 7.4293



78.6669, 4.6081, 12.2714

Triad

The Triadic color harmony groups three colors that are evenly spaced from another and form a triangle on the color wheel.



78.6669, 8.0646, 7.4306



78.6669, -12.8882, 12.0509



78.6669, -7.2054, -8.0137

Complementary

The Complementary color scheme is a pair of colors which are on the opposite of each other on the color wheel.



78.6651, 8.0670, 7.4293



87.2094, -15.7799, 2.0610

Split Complementary

Split-complementary colors differ from the complementary color scheme. The scheme consists of three colors, the original color and two neighbors of the complement color.



78.6669, -12.6401, -4.6444



78.6651, 8.0670, 7.4293



78.6669, -15.8489, 7.1070

Square

The Square scheme is like the rectangle color scheme, but the four colors are evenly spaced on the color wheel.



78.6669, 8.0646, 7.4306



78.6669, -7.5539, 14.7889



78.6669, -15.7596, 0.9977



78.6669, -0.7923, -7.9094

Rectangle

The Rectangle color scheme consists of four colors that form a rectangle on the color wheel.



78.6651, 8.0670, 7.4293



78.6669, 0.9276, 14.2872



78.6669, -15.7596, 0.9977



78.6669, -9.2028, -7.2387

Sweetspot

The Sweet Spot groups the original color and five complimentary colors.



78.6669, 8.0646, 7.4306



95.5944, -0.6540, 6.3132



79.5033, 12.9841, -8.2745



43.9436, 0.0052, 2.9800

0.0000, NaN, NaN



46.2646, -2.4686, 2.5136

Same Dimension

The Same Dimension uses a secret algorithm to generate beautiful new colors.



78.6669, 8.0646, 7.4306



84.6459, 11.9541, 8.8693



83.1117, -0.1840, 13.0944



38.8175, 1.5073, 3.0187



31.3886, 53.8260, 19.7237



8.8237, 15.1866, 5.1137

Inverse Universe

The Inverse Universe completely reimagines the original color for something new.



78.6669, 8.0646, 7.4306



84.6459, 11.9541, 8.8693



82.4304, -7.7700, -4.7927



38.8175, 1.5073, 3.0187



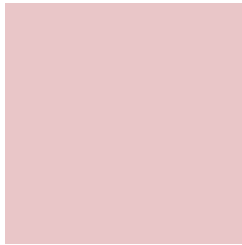
31.3886, 53.8260, 19.7237



8.8237, 15.1866, 5.1137

Previews

White Background



This preview shows how the HunterLab color 78.6651, 8.0670, 7.4293 looks on a white background.

Color Contrast Check

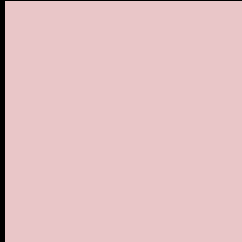
Large Text (above 18pt) WCAG AA × Fail

Any Text WCAG AA × Fail

Large Text (above 18pt) WCAG AAA × Fail

Any Text WCAG AAA × Fail

Black Background



This preview shows how the HunterLab color 78.6651, 8.0670, 7.4293 looks on a black background.

Color Contrast Check

Large Text (above 18pt) WCAG AA ✓ Pass

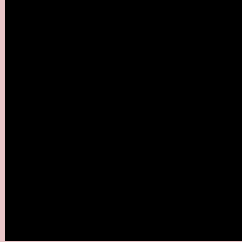
Any Text WCAG AA ✓ Pass

Large Text (above 18pt) WCAG AAA ✓ Pass

Any Text WCAG AAA ✓ Pass

If you want to check with other color combinations, try the [Color Contrast Checker](#).

HunterLab 78.6651, 8.0670, 7.4293 Background



This preview shows how black text looks on a background with the HunterLab color 78.6651, 8.0670, 7.4293.



This preview shows how white text looks on a background with the HunterLab color 78.6651, 8.0670,

7.4293.

Color Blindness Simulation

Color vision deficiency is a very complex topic, and I could not describe the different causes any better than Wikipedia does, so if you want to learn more, you should check out their [article about color blindness](#).

Dichromacy



Original Color

78.6651, 8.0670, 7.4293

Protanopia

78.6582, -2.4137, 5.3663

Deuteranopia

78.8268, 5.6031, 7.5704



Tritanopia

78.5657, 11.4504, 1.6069

Trichromacy



Original Color

78.6651, 8.0670, 7.4293

Protanomaly

78.4939, 1.6114, 5.7188

Deuteranomaly

78.6384, 6.4793, 7.3711

Tritanomaly

78.7267, 10.2470, 3.7489

Monochromacy



Original Color

78.6651, 8.0670, 7.4293

Achromatopsia

79.8497, -4.2606, 4.3384

Achromatomaly

79.3878, 0.2177, 5.3124

CSS Examples

Text

The CSS property to change the color of the text to HunterLab 78.6651, 8.0670, 7.4293 is called "color". The color property can be set on classes, ids or directly on the HTML element.

This example shows how text in the color `rgb(233, 198, 200)` looks like.

```
.text, #text, p{  
    color:rgb(233, 198, 200)  
}
```

If you want to add a text shadow in that color use the text-shadow property, you can generate a text shadow directly with our [CSS Text Shadow Generator](#).

Here you see how black text with a 4 pixel rgb(233, 198, 200) colored shadow looks like.

```
.shadow{ text-shadow: 4px 4px 2px rgb(233, 198, 200) }
```

Border

The CSS property to change the border of an element to HunterLab 78.6651, 8.0670, 7.4293 is called "border".

The border property can be set on classes, ids or directly on the HTML element.

This example shows the color as border, it can be applied via the CSS property "border" or "border-color".

```
.border, #border, table{ border:4px solid rgb(233, 198, 200) }
```


If only the border color should be changed use the property `border-color`.

```
.border{ border-color:rgb(233, 198, 200) }
```

If you want to add a box shadow in that color use:

Here you see how a box with a 4 pixel `rgb(233, 198, 200)` colored shadow looks like.

```
.boxshadow{ -moz-box-shadow:4px 4px 4px  
4px rgb(233, 198, 200); -webkit-box-  
shadow:4px 4px 4px 4px rgb(233, 198, 200);  
box-shadow:4px 4px 4px 4px rgb(233, 198,  
200) }
```

Background

The CSS property to change the background color of an element to HunterLab 78.6651, 8.0670, 7.4293 is called "background". The background property can be set on classes, ids or directly on the HTML element.

```
.background, #background, body{  
background: rgb(233, 198, 200) }
```

If only the background color should be changed can be used:

```
.background{ background-color: rgb(233,  
198, 200) }
```

This example shows the color as background, it is applied via the CSS property "background".

To optimize and compress your CSS code, you can use our [online CSS compressor and optimizer](#) based on csstidy. If you want to create a linear or radial gradient as background or border, check our [CSS Gradient Generator](#).

Hey! You found this booklet interesting? Support Converting Colors with the new Membership Option!

The pro membership hides all ads, plus gives you double the colors in the color bucket, and more awesome pro features!

[Learn more, Memberships starting at \\$2.50/m!](#)

**Follow me
on Twitter!**

@ConvertingColor