

# Converting Colors

HunterLab(78.5756, 9.5473,  
15.5246)

Have a look what the booklet for  
HunterLab(78.5756, 9.5473,  
15.5246) contains.

<b>HunterLab(78.5451, 9.5783, 15.5676)</b> .....	3
<b><i>Conversions</i></b> .....	4
<b><i>Details</i></b> .....	6
<b><i>Harmonies</i></b> .....	12
<b><i>Previews</i></b> .....	24
<b><i>Color Blindness Simulation</i></b> .....	28
<b><i>CSS Examples</i></b> .....	31

# Color

**HunterLab(78.5451, 9.5783,  
15.5676)**

# Conversions

## Conversions Part 1

Format	Color
Hex	F2C4B5
RGB	242, 196, 181
RGB Percent	95%, 77%, 71%
CMY	0.0510, 0.2313, 0.2902
CMYK	0.00, 0.19, 0.25, 0.05
HSL	15°, 70%, 83%
HSV	15°, 25%, 95%
XYZ	64.6984, 61.6933, 52.2141
YIQ	208.0440, 32.2310, 5.0870

# Conversions

## Conversions Part 2

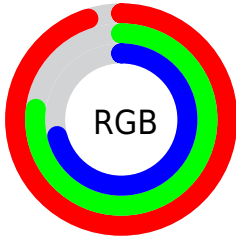
Format	Color
R <sub>Y</sub> B	242, 201, 181
Decimal	15910069
CIE Lab	82.75, 14.18, 13.72
CIE LCh	83, 19.730, 44.037
Yxy	61.6962, 0.3622, 0.3454
Android (android.graphics.Color)	4294100149 (0xFFFF2C4B5)
YUV	208.0440, -13.3327, 29.7794
Hunter-Lab	78.5451, 9.5783, 15.5676

# Details

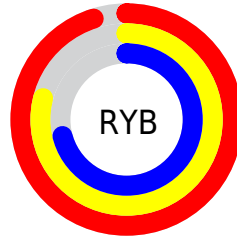
The HunterLab color **78.5451, 9.5783, 15.5676** is a light color, and the websafe version is hex **FFCCCC**. A complement of this color would be **84.3627, -15.2844, -7.3221**, and the grayscale version is **79.4863, -4.2412, 4.3186**.

A 20% lighter version of the original color is **98.8054, -7.3337, 12.6770**, and **55.8738, 9.4889, 12.9246** is the 20% darker color. If you saturate the color by 10%, you get **72.8352, 16.0519, 19.2679**, and if you desaturate by 10%, it is **84.5673, 3.5009, 11.5880**.

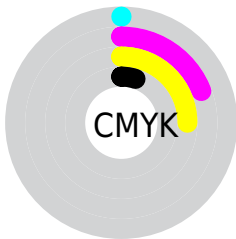
# Distribution



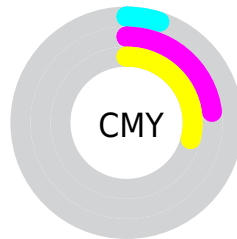
- Red (95%)
- Green (77%)
- Blue (71%)



- Red (95%)
- Yellow (79%)
- Blue (71%)



- Cyan (0%)
- Magenta (19%)
- Yellow (25%)
- Black (5%)




- Cyan (5%)
- Magenta (23%)
- Yellow (29%)


# Brightness & Saturation Gradients

These gradients show how the HunterLab color 78.5451, 9.5783, 15.5676 changes by changing the brightness by 10 percent. The first figure shows a shift by +10% for each color and the second figure -10%.


Similar to the brightness gradients but the following saturation gradients show a change of the HunterLab color 78.5451, 9.5783, 15.5676 by changing the saturation by 10% instead.



 78.5451, 9.5783,  
15.5676

 78.5451, 9.5783,  
15.5676

207.5625, 7.6547,  
27.5355

 66.9233, 9.5290,  
14.2496

 103.5791, 9.4851,  
18.1956

 55.9374, 9.4130,  
12.9196

116.9343, 9.3580,  
19.5103

 45.6286, 9.2191,  
11.5708


130.8187, 9.1814,  
20.8291

 36.0448, 8.9366,  
10.1918

145.2130, 8.9587,  
22.1539

 27.2456, 8.5511,  
8.7645

160.0995, 8.6924,  
23.4859

 19.3084, 8.0427,  
7.2593

175.4627, 8.3850,

 12.3397, 7.3833,

24.8263

5.8596

191.2881, 8.0385,  
26.1760

■ 5.5192, 10.9036,  
3.8634

0.0000, NaN, NaN

■ 78.5451, 9.5783,  
15.5676

■ 78.5451, 9.5783,  
15.5676

■ 72.8352, 16.0519,  
19.2679

■ 84.5673, 3.5009,  
11.5880

■ 67.4776, 22.9375,  
22.6098

■ 90.8584, -2.1982,  
7.3829

■ 62.5271, 30.2045,  
25.4983

■ 97.3882, -7.5563,  
2.9965

■ 58.0437, 37.7680,  
27.8175

■ 98.8015, -9.5304,  
3.9408

■ 54.0924, 45.4587,  
29.4414

■ 50.7373, 53.0009,  
30.2601

■ 48.0317, 60.0096,  
30.2338

■ 46.9678, 63.0199,  
30.0446

# Harmonies

## Analogous

The Analogous color harmony consists of three colors that are next to each other on the color wheel.



78.5469, 14.6032, 8.4322



78.5451, 9.5783, 15.5676



78.5469, 0.9663, 19.4059

# Triad

The Triadic color harmony groups three colors that are evenly spaced from another and form a triangle on the color wheel.



78.5469, 9.5755, 15.5688



78.5469, -21.2298, 8.9707



78.5469, 0.3503, -14.8210

# Complementary

The Complementary color scheme is a pair of colors which are on the opposite of each other on the color wheel.



78.5451, 9.5783, 15.5676



84.3627, -15.2844, -7.3221

# Split Complementary

Split-complementary colors differ from the complementary color scheme. The scheme consists of three colors, the original color and two neighbors of the complement color.



78.5469, -9.2269, -14.6315



78.5451, 9.5783, 15.5676



78.5469, -21.3768, -0.1216

# Square

The Square scheme is like the rectangle color scheme, but the four colors are evenly spaced on the color wheel.



78.5469, 9.5755, 15.5688



78.5469, -16.6662, 15.9219



78.5469, -17.0782, -8.9919



78.5469, 9.1058, -9.4823



# Rectangle

The Rectangle color scheme consists of four colors that form a rectangle on the color wheel.



78.5451, 9.5783, 15.5676



78.5469, -5.4957, 19.9057



78.5469, -17.0782, -8.9919



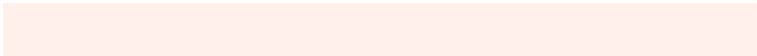
78.5469, -2.8863, -15.4200

# Sweetspot

The Sweet Spot groups the original color and five complimentary colors.



78.5469, 9.5755, 15.5688



94.5148, -0.6678, 9.1130



75.8381, 25.2483, -10.0775



43.2581, 0.1093, 4.5298

0.0000, NaN, NaN



46.2646, -2.4686, 2.5136



# Same Dimension

The Same Dimension uses a secret algorithm to generate beautiful new colors.



78.5469, 9.5755, 15.5688



80.3563, 13.4601, 18.4789



87.4424, -5.8784, 24.1366



40.4850, 0.0867, 4.2260



34.6845, 45.4002, 22.1673



10.7347, 10.9927, 6.8071

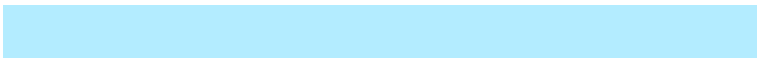


# Inverse Universe

The Inverse Universe completely reimagines the original color for something new.



84.3627, -15.2844, -7.3221



87.6586, -17.8392, -10.2877



75.0260, -0.1778, -20.1579



41.5113, -4.2790, 0.1926



46.6335, -13.6233, -28.8789

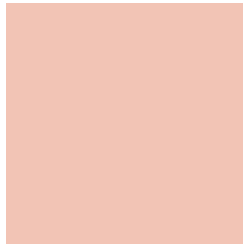


14.0137, -4.7180, -7.3310



# Previews

## White Background



This preview shows how the HunterLab color 78.5451, 9.5783, 15.5676 looks on a white background.

## Color Contrast Check

Large Text (above 18pt) WCAG AA × Fail

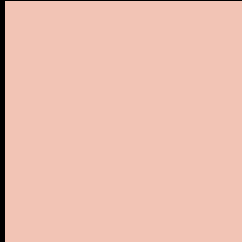
Any Text WCAG AA × Fail

Large Text (above 18pt) WCAG AAA × Fail

Any Text WCAG AAA × Fail



# Black Background



This preview shows how the HunterLab color 78.5451, 9.5783, 15.5676 looks on a black background.

## Color Contrast Check

Large Text (above 18pt) WCAG AA ✓ Pass

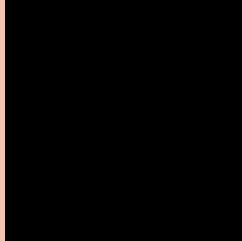
Any Text WCAG AA ✓ Pass

Large Text (above 18pt) WCAG AAA ✓ Pass

Any Text WCAG AAA ✓ Pass

If you want to check with other color combinations, try the [Color Contrast Checker](#).

## HunterLab 78.5451, 9.5783, 15.5676 Background



This preview shows how black text looks on a background with the HunterLab color 78.5451, 9.5783, 15.5676.



This preview shows how white text looks on a background with the HunterLab color 78.5451, 9.5783,



# Color Blindness Simulation

Color vision deficiency is a very complex topic, and I could not describe the different causes any better than Wikipedia does, so if you want to learn more, you should check out their [article about color blindness](#).

## Dichromacy



### Original Color

78.5451, 9.5783, 15.5676

### Protanopia

78.8257, -4.4338, 13.5530

### Deuteranopia

78.6157, 5.2907, 15.9700



## Tritanopia

78.4963, 16.7360, 4.0743

# Trichromacy



## Original Color

78.5451, 9.5783, 15.5676

## Protanomaly

78.5553, 0.7369, 14.1921

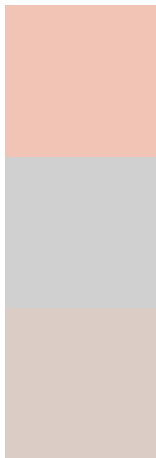
## Deuteranomaly

78.6515, 6.9096, 16.0352

## Tritanomaly

78.3902, 14.4045, 8.1473

# Monochromacy



## Original Color

78.5451, 9.5783, 15.5676

## Achromatopsia

79.4202, -4.2377, 4.3151

## Achromatomaly

79.0434, 0.1075, 8.6335

# CSS Examples

## Text

The CSS property to change the color of the text to HunterLab 78.5451, 9.5783, 15.5676 is called "color". The color property can be set on classes, ids or directly on the HTML element.

This example shows how text in the color `rgb(242, 196, 181)` looks like.

```
.text, #text, p{  
    color:rgb(242, 196, 181)  
}
```

If you want to add a text shadow in that color use the text-shadow property, you can generate a text shadow directly with our [CSS Text Shadow Generator](#).

Here you see how black text with a 4 pixel rgb(242, 196, 181) colored shadow looks like.

```
.shadow{ text-shadow: 4px 4px 2px rgb(242, 196, 181) }
```

## Border

The CSS property to change the border of an element to HunterLab 78.5451, 9.5783, 15.5676 is called "border". The border property can be set on classes, ids or directly on the HTML element.

This example shows the color as border, it can be applied via the CSS property "border" or "border-color".

```
.border, #border, table{ border:4px solid rgb(242, 196, 181) }
```



If only the border color should be changed use the property `border-color`.

```
.border{ border-color:rgb(242, 196, 181) }
```

If you want to add a box shadow in that color use:

Here you see how a box with a 4 pixel `rgb(242, 196, 181)` colored shadow looks like.

```
.boxshadow{ -moz-box-shadow:4px 4px 4px  
4px rgb(242, 196, 181); -webkit-box-  
shadow:4px 4px 4px 4px rgb(242, 196, 181);  
box-shadow:4px 4px 4px 4px rgb(242, 196,  
181) }
```

# Background

The CSS property to change the background color of an element to HunterLab 78.5451, 9.5783, 15.5676 is called "background". The background property can be set on classes, ids or directly on the HTML element.

```
.background, #background, body{  
background: rgb(242, 196, 181) }
```

If only the background color should be changed can be used:

```
.background{ background-color: rgb(242,  
196, 181) }
```

This example shows the color as background, it is applied via the CSS property "background".

To optimize and compress your CSS code, you can use our [online CSS compressor and optimizer](#) based on csstidy. If you want to create a linear or radial gradient as background or border, check our [CSS Gradient Generator](#).

Hey! You found this booklet interesting? Support Converting Colors with the new Membership Option!

The pro membership hides all ads, plus gives you double the colors in the color bucket, and more awesome pro features!

**[Learn more, Memberships starting at \\$2.50/m!](#)**

**Follow me  
on Twitter!**

@ConvertingColor