

Converting Colors

HunterLab(78.6349, 1.1789,
6.3628)

Have a look what the booklet for
HunterLab(78.6349, 1.1789, 6.3628)
contains.

HunterLab(78.7631, 0.9297, 6.4874)	3
<i>Conversions</i>	4
<i>Details</i>	6
<i>Harmonies</i>	12
<i>Previews</i>	24
<i>Color Blindness Simulation</i>	28
<i>CSS Examples</i>	31

Color

**HunterLab(78.7631, 0.9297,
6.4874)**

Conversions

Conversions Part 1

Format	Color
Hex	DBCBCA
RGB	219, 203, 202
RGB Percent	86%, 80%, 79%
CMY	0.1412, 0.2039, 0.2078
CMYK	0.00, 0.07, 0.08, 0.14
HSL	4°, 19%, 83%
HSV	4°, 8%, 86%
XYZ	61.2301, 62.0363, 64.6242
YIQ	207.6700, 9.8570, 3.0810

Conversions

Conversions Part 2

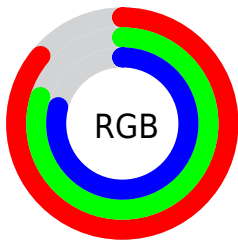
Format	Color
R _Y B	219, 203, 202
Decimal	14404554
CIE Lab	82.93, 5.39, 2.50
CIE LCh	83, 5.944, 24.852
Yxy	62.0390, 0.3259, 0.3302
Android (android.graphics.Color)	4292594634 (0xFFDBCBCA)
YUV	207.6700, -2.7953, 9.9364
Hunter-Lab	78.7631, 0.9297, 6.4874

Details

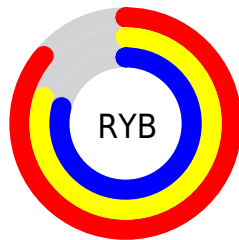
The HunterLab color $78.7631, 0.9297, 6.4874$ is a light color, and the websafe version is hex `CCCCCC`. A complement of this color would be $82.3485, -9.2525, 2.3281$, and the grayscale version is $79.2887, -4.2306, 4.3079$.

A 20% lighter version of the original color is $100.0000, -5.3358, 5.4332$, and $56.1476, 1.5743, 5.0405$ is the 20% darker color. If you saturate the color by 10%, you get $72.0964, 8.2006, 9.0145$, and if you desaturate by 10%, it is $85.7554, -6.0184, 4.0279$.

Distribution



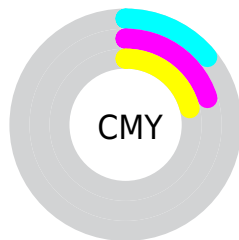
- Red (86%)
- Green (80%)
- Blue (79%)



- Red (86%)
- Yellow (80%)
- Blue (79%)



- Cyan (0%)
- Magenta (7%)
- Yellow (8%)
- Black (14%)



- Cyan (14%)
- Magenta (20%)
- Yellow (21%)

Brightness & Saturation Gradients

These gradients show how the HunterLab color 78.7631, 0.9297, 6.4874 changes by changing the brightness by 10 percent. The first figure shows a shift by +10% for each color and the second figure -10%.

Similar to the brightness gradients but the following saturation gradients show a change of the HunterLab color 78.7631, 0.9297, 6.4874 by changing the saturation by 10% instead.

■ 78.7631, 0.9297,
6.4874

■ 78.7631, 0.9297,
6.4874

207.8637, -4.0493,
14.3780

■ 67.1299, 1.2895,
5.7377

103.8180, 0.0726,
8.0706

■ 56.1320, 1.6028,
5.0143

117.1831, -0.4145,
8.9002

■ 45.8105, 1.8626,
4.3193

131.0770, -0.9384,
9.7546

■ 36.2129, 2.0626,
3.6532

145.4804, -1.4971,
10.6331

■ 27.3988, 2.1943,
3.0164

160.3758, -2.0890,
11.5353

■ 19.4450, 2.2453,
2.4083

175.7475, -2.7124,

■ 12.4574, 2.1968,

12.4605

1.8267

191.5812, -3.3663,
13.4082

■ 5.6994, 3.8190,
2.1270

0.0000, NaN, NaN

■ 78.7631, 0.9297,
6.4874

■ 78.7631, 0.9297,
6.4874

■ 72.0964, 8.2006,
9.0145

■ 85.7554, -6.0184,
4.0279

■ 65.8050, 15.8207,
11.5986

■ 93.0244, -12.6720,
1.6303

■ 59.9587, 23.7735,
14.2186

■ 96.8505, -16.4718,
1.4735

■ 54.6411, 31.9783,
16.8252

■ 49.9503, 40.2407,
19.3285

■ 45.9941, 48.2044,
21.5870

■ 42.8747, 55.3359,
23.4153

■ 40.6623, 61.0060,
24.6296

■ 39.3559, 64.6965,
25.1716

Harmonies

Analogous

The Analogous color harmony consists of three colors that are next to each other on the color wheel.



78.7648, 1.4357, 3.8089



78.7631, 0.9297, 6.4874



78.7648, -0.9643, 8.5108

Triad

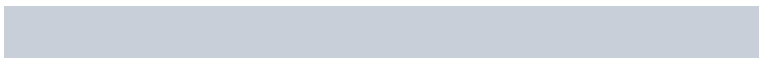
The Triadic color harmony groups three colors that are evenly spaced from another and form a triangle on the color wheel.



78.7648, 0.9276, 6.4887



78.7648, -8.7238, 7.2864



78.7648, -4.7077, -1.1923

Complementary

The Complementary color scheme is a pair of colors which are on the opposite of each other on the color wheel.



78.7631, 0.9297, 6.4874



82.3485, -9.2525, 2.3281

Split Complementary

Split-complementary colors differ from the complementary color scheme. The scheme consists of three colors, the original color and two neighbors of the complement color.



78.7648, -7.3979, -0.1837



78.7631, 0.9297, 6.4874



78.7648, -9.6950, 4.7628

Square

The Square scheme is like the rectangle color scheme, but the four colors are evenly spaced on the color wheel.



78.7648, 0.9276, 6.4887



78.7648, -6.5415, 8.9595



78.7648, -9.2132, 2.0207



78.7648, -1.8449, -0.6898

Rectangle

The Rectangle color scheme consists of four colors that form a rectangle on the color wheel.



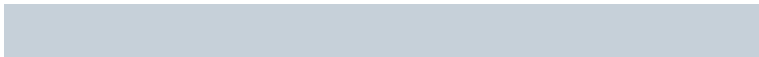
78.7631, 0.9297, 6.4874



78.7648, -2.7415, 9.2473



78.7648, -9.2132, 2.0207



78.7648, -5.6617, -1.0177

Sweetspot

The Sweet Spot groups the original color and five complimentary colors.



78.7648, 0.9276, 6.4887



98.3118, -3.6843, 6.0202



78.9759, 4.2049, -1.1358



45.5221, -1.7426, 2.7717

0.0000, NaN, NaN



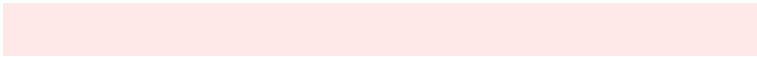
46.2646, -2.4686, 2.5136

Same Dimension

The Same Dimension uses a secret algorithm to generate beautiful new colors.



78.7648, 0.9276, 6.4887



92.5184, 2.2153, 8.0996



81.2945, -3.3721, 9.2810



36.2963, 0.9911, 3.2293



30.2525, 49.9203, 19.5154



7.9834, 11.7780, 5.1256

Inverse Universe

The Inverse Universe completely reimagines the original color for something new.



82.3485, -9.2525, 2.3281



97.4898, -11.9102, 2.3270



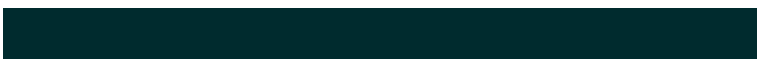
79.7449, -5.0165, -0.7774



38.3288, -4.7842, 0.8692



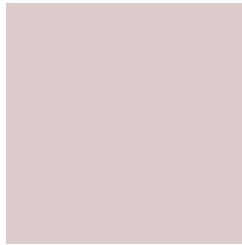
54.1152, -26.3973, -10.6550



13.9214, -6.8994, -2.5068

Previews

White Background



This preview shows how the HunterLab color 78.7631, 0.9297, 6.4874 looks on a white background.

Color Contrast Check

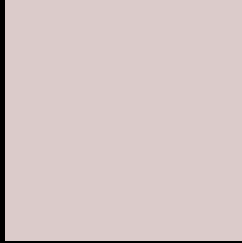
Large Text (above 18pt) WCAG AA × Fail

Any Text WCAG AA × Fail

Large Text (above 18pt) WCAG AAA × Fail

Any Text WCAG AAA × Fail

Black Background



This preview shows how the HunterLab color 78.7631, 0.9297, 6.4874 looks on a black background.

Color Contrast Check

Large Text (above 18pt) WCAG AA ✓ Pass

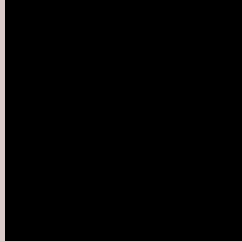
Any Text WCAG AA ✓ Pass

Large Text (above 18pt) WCAG AAA ✓ Pass

Any Text WCAG AAA ✓ Pass

If you want to check with other color combinations, try the [Color Contrast Checker](#).

HunterLab 78.7631, 0.9297, 6.4874 Background



This preview shows how black text looks on a background with the HunterLab color 78.7631, 0.9297, 6.4874.



This preview shows how white text looks on a background with the HunterLab color 78.7631, 0.9297,

6.4874.

Color Blindness Simulation

Color vision deficiency is a very complex topic, and I could not describe the different causes any better than Wikipedia does, so if you want to learn more, you should check out their [article about color blindness](#).

Dichromacy



Original Color

78.7631, 0.9297, 6.4874

Protanopia

78.9324, -3.0911, 6.1438

Deuteranopia

78.8126, 5.7353, 6.1600



Tritanopia

78.8386, 5.1924, -0.6975

Trichromacy



Original Color

78.7631, 0.9297, 6.4874

Protanomaly

78.9117, -1.5997, 6.1460

Deuteranomaly

78.7989, 4.1734, 6.1168

Tritanomaly

78.8734, 3.4604, 1.8399

Monochromacy



Original Color

78.7631, 0.9297, 6.4874

Achromatopsia

79.4202, -4.2377, 4.3151

Achromatomaly

79.1176, -2.2680, 4.9533

CSS Examples

Text

The CSS property to change the color of the text to HunterLab 78.7631, 0.9297, 6.4874 is called "color". The color property can be set on classes, ids or directly on the HTML element.

This example shows how text in the color `rgb(219, 203, 202)` looks like.

```
.text, #text, p{  
    color:rgb(219, 203, 202)  
}
```

If you want to add a text shadow in that color use the text-shadow property, you can generate a text shadow directly with our [CSS Text Shadow Generator](#).

Here you see how black text with a 4 pixel rgb(219, 203, 202) colored shadow looks like.

```
.shadow{ text-shadow: 4px 4px 2px rgb(219, 203, 202) }
```

Border

The CSS property to change the border of an element to HunterLab 78.7631, 0.9297, 6.4874 is called "border". The border property can be set on classes, ids or directly on the HTML element.

This example shows the color as border, it can be applied via the CSS property "border" or "border-color".

```
.border, #border, table{ border:4px solid rgb(219, 203, 202) }
```


If only the border color should be changed use the property `border-color`.

```
.border{ border-color:rgb(219, 203, 202) }
```

If you want to add a box shadow in that color use:

Here you see how a box with a 4 pixel `rgb(219, 203, 202)` colored shadow looks like.

```
.boxshadow{ -moz-box-shadow:4px 4px 4px  
4px rgb(219, 203, 202); -webkit-box-  
shadow:4px 4px 4px 4px rgb(219, 203, 202);  
box-shadow:4px 4px 4px 4px rgb(219, 203,  
202) }
```

Background

The CSS property to change the background color of an element to HunterLab 78.7631, 0.9297, 6.4874 is called "background". The background property can be set on classes, ids or directly on the HTML element.

```
.background, #background, body{  
background: rgb(219, 203, 202) }
```

If only the background color should be changed can be used:

```
.background{ background-color: rgb(219,  
203, 202) }
```

This example shows the color as background, it is applied via the CSS property "background".

To optimize and compress your CSS code, you can use our [online CSS compressor and optimizer](#) based on csstidy. If you want to create a linear or radial gradient as background or border, check our [CSS Gradient Generator](#).

Hey! You found this booklet interesting? Support Converting Colors with the new Membership Option!

The pro membership hides all ads, plus gives you double the colors in the color bucket, and more awesome pro features!

[Learn more, Memberships starting at \\$2.50/m!](#)

**Follow me
on Twitter!**

@ConvertingColor