

Converting Colors

HunterLab(78.6427, 2.0963,
7.4539)

Have a look what the booklet for
HunterLab(78.6427, 2.0963, 7.4539)
contains.

HunterLab(78.7025, 2.1406, 7.3682)	3
<i>Conversions</i>	4
<i>Details</i>	6
<i>Harmonies</i>	12
<i>Previews</i>	24
<i>Color Blindness Simulation</i>	28
<i>CSS Examples</i>	31

Color

**HunterLab(78.7025, 2.1406,
7.3682)**

Conversions

Conversions Part 1

Format	Color
Hex	DECAC8
RGB	222, 202, 200
RGB Percent	87%, 79%, 78%
CMY	0.1294, 0.2078, 0.2157
CMYK	0.00, 0.09, 0.10, 0.13
HSL	5°, 25%, 83%
HSV	5°, 10%, 87%
XYZ	61.6701, 61.9408, 63.3490
YIQ	207.7520, 12.5620, 3.6180

Conversions

Conversions Part 2

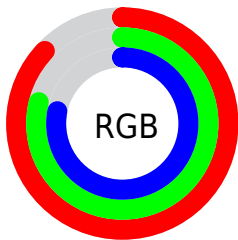
Format	Color
R _Y B	222, 202, 200
Decimal	14600904
CIE Lab	82.88, 6.64, 3.52
CIE LCh	83, 7.520, 27.938
Yxy	61.9436, 0.3299, 0.3313
Android (android.graphics.Color)	4292790984 (0xFFDECAC8)
YUV	207.7520, -3.8217, 12.4955
Hunter-Lab	78.7025, 2.1406, 7.3682

Details

The HunterLab color $78.7025, 2.1406, 7.3682$ is a light color, and the websafe version is hex `CCCCCC`. A complement of this color would be $82.9087, -10.3201, 1.4864$, and the grayscale version is $79.3274, -4.2327, 4.3100$.

A 20% lighter version of the original color is $100.0000, -5.3358, 5.4332$, and $56.0987, 2.7396, 5.8746$ is the 20% darker color. If you saturate the color by 10%, you get $72.1952, 9.2314, 10.1433$, and if you desaturate by 10%, it is $85.5304, -4.6199, 4.6189$.

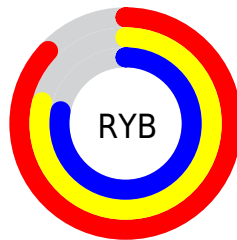
Distribution



Red (87%)

Green (79%)

Blue (78%)



Red (87%)

Yellow (79%)

Blue (78%)

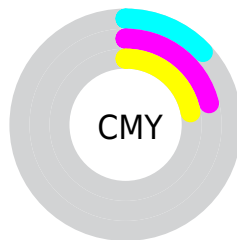


Cyan (0%)

Magenta (9%)

Yellow (10%)

Black (13%)



Cyan (13%)

Magenta (21%)

Yellow (22%)

Brightness & Saturation Gradients

These gradients show how the HunterLab color 78.7025, 2.1406, 7.3682 changes by changing the brightness by 10 percent. The first figure shows a shift by +10% for each color and the second figure -10%.

Similar to the brightness gradients but the following saturation gradients show a change of the HunterLab color 78.7025, 2.1406, 7.3682 by changing the saturation by 10% instead.

■ 78.7025, 2.1406,
7.3682

■ 78.7025, 2.1406,
7.3682

207.7800, -2.3971,
15.6167

■ 67.0724, 2.4409,
6.5693

103.7516, 1.3943,
9.0424

■ 56.0779, 2.6916,
5.7937

117.1139, 0.9592,
9.9144

■ 45.7599, 2.8850,
5.0427

131.0052, 0.4855,
10.8095

■ 36.1662, 3.0141,
4.3160

145.4060, -0.0247,
11.7273

■ 27.3562, 3.0691,
3.6126

160.2990, -0.5696,
12.6673

■ 19.4070, 3.0363,
2.9297

175.6683, -1.1475,

■ 12.4247, 2.8944,

13.6292

2.2612

191.4997, -1.7571,
14.6124

■ 5.6499, 4.8223,
2.8925

0.0000, NaN, NaN

■ 78.7025, 2.1406,
7.3682

■ 78.7025, 2.1406,
7.3682

■ 72.1952, 9.2314,
10.1433

■ 85.5304, -4.6199,
4.6189

■ 66.0560, 16.6780,
12.9231

■ 92.6312, -11.0772,
1.8982

■ 60.3519, 24.4635,
15.6739

■ 97.0926, -15.6026,
1.7823

■ 55.1617, 32.5098,
18.3326

■ 50.5776, 40.6333,
20.7975

■ 46.6993, 48.5010,
22.9228

■ 43.6212, 55.6172,
24.5330

■ 41.4082, 61.3921,
25.4742

■ 40.0561, 65.2961,
25.8170

Harmonies

Analogous

The Analogous color harmony consists of three colors that are next to each other on the color wheel.



78.7042, 2.9850, 4.0417



78.7025, 2.1406, 7.3682



78.7042, -0.4165, 9.7717

Triad

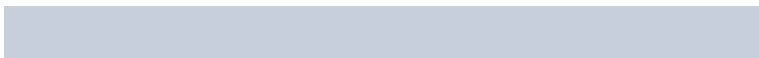
The Triadic color harmony groups three colors that are evenly spaced from another and form a triangle on the color wheel.



78.7042, 2.1384, 7.3695



78.7042, -10.1044, 7.7703



78.7042, -4.4579, -2.7356

Complementary

The Complementary color scheme is a pair of colors which are on the opposite of each other on the color wheel.



78.7025, 2.1406, 7.3682



82.9087, -10.3201, 1.4864

Split Complementary

Split-complementary colors differ from the complementary color scheme. The scheme consists of three colors, the original color and two neighbors of the complement color.



78.7042, -7.9206, -1.6296



78.7025, 2.1406, 7.3682



78.7042, -11.1432, 4.5257

Square

The Square scheme is like the rectangle color scheme, but the four colors are evenly spaced on the color wheel.



78.7042, 2.1384, 7.3695



78.7042, -7.4878, 9.9956



78.7042, -10.3511, 1.0685



78.7042, -0.8648, -1.8904

Rectangle

The Rectangle color scheme consists of four colors that form a rectangle on the color wheel.



78.7025, 2.1406, 7.3682



78.7042, -2.7212, 10.5796



78.7042, -10.3511, 1.0685



78.7042, -5.6753, -2.5787

Sweetspot

The Sweet Spot groups the original color and five complimentary colors.



78.7042, 2.1384, 7.3695



97.5503, -2.9833, 6.4027



78.7497, 6.6197, -2.4251



44.8307, -1.0867, 3.0823

0.0000, NaN, NaN



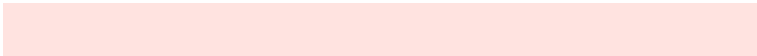
46.2646, -2.4686, 2.5136

Same Dimension

The Same Dimension uses a secret algorithm to generate beautiful new colors.



78.7042, 2.1384, 7.3695



90.3904, 4.2794, 9.3293



81.9788, -3.4508, 10.9338



37.2830, 0.8592, 3.4175



30.9769, 49.9676, 19.9626



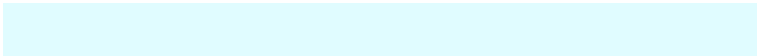
8.5743, 11.8121, 5.4902

Inverse Universe

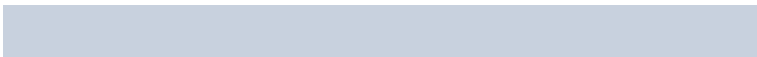
The Inverse Universe completely reimagines the original color for something new.



82.9087, -10.3201, 1.4864



96.3773, -13.4696, 0.9500



79.5217, -4.8272, -2.6094



39.1760, -4.7497, 0.7688



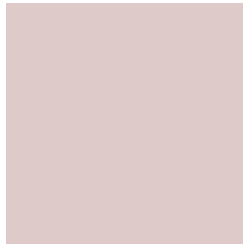
53.1484, -24.5329, -13.4714



14.2170, -6.7387, -3.2232

Previews

White Background



This preview shows how the HunterLab color 78.7025, 2.1406, 7.3682 looks on a white background.

Color Contrast Check

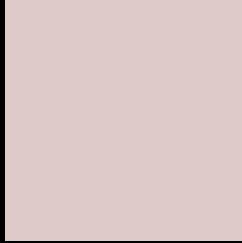
Large Text (above 18pt) WCAG AA × Fail

Any Text WCAG AA × Fail

Large Text (above 18pt) WCAG AAA × Fail

Any Text WCAG AAA × Fail

Black Background



This preview shows how the HunterLab color 78.7025, 2.1406, 7.3682 looks on a black background.

Color Contrast Check

Large Text (above 18pt) WCAG AA ✓ Pass

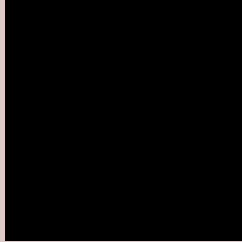
Any Text WCAG AA ✓ Pass

Large Text (above 18pt) WCAG AAA ✓ Pass

Any Text WCAG AAA ✓ Pass

If you want to check with other color combinations, try the [Color Contrast Checker](#).

HunterLab 78.7025, 2.1406, 7.3682 Background



This preview shows how black text looks on a background with the HunterLab color 78.7025, 2.1406, 7.3682.



This preview shows how white text looks on a background with the HunterLab color 78.7025, 2.1406,

7.3682.

Color Blindness Simulation

Color vision deficiency is a very complex topic, and I could not describe the different causes any better than Wikipedia does, so if you want to learn more, you should check out their [article about color blindness](#).

Dichromacy



Original Color

78.7025, 2.1406, 7.3682

Protanopia

78.9023, -3.2557, 6.5742

Deuteranopia

78.8268, 5.6031, 7.5704



Tritanopia

78.7795, 6.3788, 0.2702

Trichromacy



Original Color

78.7025, 2.1406, 7.3682

Protanomaly

78.9473, -1.5972, 7.1196

Deuteranomaly

78.8113, 4.0354, 7.5252

Tritanomaly

78.8127, 4.6530, 2.7763

Monochromacy



Original Color

78.7025, 2.1406, 7.3682

Achromatopsia

79.4202, -4.2377, 4.3151

Achromatomaly

79.1811, -2.1097, 5.5058

CSS Examples

Text

The CSS property to change the color of the text to HunterLab 78.7025, 2.1406, 7.3682 is called "color". The color property can be set on classes, ids or directly on the HTML element.

This example shows how text in the color `rgb(222, 202, 200)` looks like.

```
.text, #text, p{  
    color:rgb(222, 202, 200)  
}
```

If you want to add a text shadow in that color use the text-shadow property, you can generate a text shadow directly with our [CSS Text Shadow Generator](#).

Here you see how black text with a 4 pixel rgb(222, 202, 200) colored shadow looks like.

```
.shadow{ text-shadow: 4px 4px 2px rgb(222, 202, 200) }
```

Border

The CSS property to change the border of an element to HunterLab 78.7025, 2.1406, 7.3682 is called "border". The border property can be set on classes, ids or directly on the HTML element.

This example shows the color as border, it can be applied via the CSS property "border" or "border-color".

```
.border, #border, table{ border:4px solid rgb(222, 202, 200) }
```


If only the border color should be changed use the property `border-color`.

```
.border{ border-color:rgb(222, 202, 200) }
```

If you want to add a box shadow in that color use:

Here you see how a box with a 4 pixel `rgb(222, 202, 200)` colored shadow looks like.

```
.boxshadow{ -moz-box-shadow:4px 4px 4px  
4px rgb(222, 202, 200); -webkit-box-  
shadow:4px 4px 4px 4px rgb(222, 202, 200);  
box-shadow:4px 4px 4px 4px rgb(222, 202,  
200) }
```

Background

The CSS property to change the background color of an element to HunterLab 78.7025, 2.1406, 7.3682 is called "background". The background property can be set on classes, ids or directly on the HTML element.

```
.background, #background, body{  
background: rgb(222, 202, 200) }
```

If only the background color should be changed can be used:

```
.background{ background-color: rgb(222,  
202, 200) }
```

This example shows the color as background, it is applied via the CSS property "background".

To optimize and compress your CSS code, you can use our [online CSS compressor and optimizer](#) based on csstidy. If you want to create a linear or radial gradient as background or border, check our [CSS Gradient Generator](#).

Hey! You found this booklet interesting? Support Converting Colors with the new Membership Option!

The pro membership hides all ads, plus gives you double the colors in the color bucket, and more awesome pro features!

[Learn more, Memberships starting at \\$2.50/m!](#)

**Follow me
on Twitter!**

@ConvertingColor