

# Converting Colors

HunterLab(78.7198, 2.4350,  
6.5185)

Have a look what the booklet for  
HunterLab(78.7198, 2.4350, 6.5185)  
contains.

<b>HunterLab(78.7623, 2.4631, 6.5133)</b> .....	3
<i><b>Conversions</b></i> .....	4
<i><b>Details</b></i> .....	6
<i><b>Harmonies</b></i> .....	12
<i><b>Previews</b></i> .....	24
<i><b>Color Blindness Simulation</b></i> .....	28
<i><b>CSS Examples</b></i> .....	31

# Color

**HunterLab(78.7623, 2.4631,  
6.5133)**

# Conversions

## Conversions Part 1

<b>Format</b>	<b>Color</b>
Hex	DECACA
RGB	222, 202, 202
RGB Percent	87%, 79%, 79%
CMY	0.1294, 0.2078, 0.2078
CMYK	0.00, 0.09, 0.09, 0.13
HSL	0°, 23%, 83%
HSV	0°, 9%, 87%
XYZ	61.9055, 62.0350, 64.5884
YIQ	207.9800, 11.9200, 4.2400

# Conversions

## Conversions Part 2

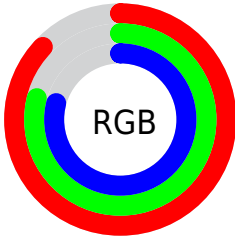
<b>Format</b>	<b>Color</b>
R <sub>YB</sub>	222, 202, 202
Decimal	14600906
CIE Lab	82.93, 6.98, 2.53
CIE LCh	83, 7.422, 19.913
Yxy	62.0377, 0.3284, 0.3291
Android (android.graphics.Color)	4292790986 (0xFFDECACA)
YUV	207.9800, -2.9481, 12.2955
Hunter-Lab	78.7623, 2.4631, 6.5133

# Details

The HunterLab color  $78.7623, 2.4631, 6.5133$  is a light color, and the websafe version is hex  $CCCCCC$ . A complement of this color would be  $83.7089, -10.7362, 2.4448$ , and the grayscale version is  $79.4218, -4.2377, 4.3151$ .

A 20% lighter version of the original color is  $100.0000, -5.3358, 5.4332$ , and  $56.1546, 3.0402, 5.0741$  is the 20% darker color. If you saturate the color by 10%, you get  $71.6817, 10.5838, 8.7274$ , and if you desaturate by 10%, it is  $86.2219, -5.3168, 4.4444$ .

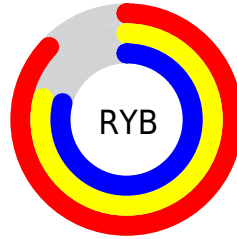
# Distribution



Red (87%)

Green (79%)

Blue (79%)



Red (87%)

Yellow (79%)

Blue (79%)

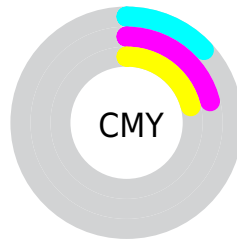


Cyan (0%)

Magenta (9%)

Yellow (9%)

Black (13%)



Cyan (13%)

Magenta (21%)

Yellow (21%)

# Brightness & Saturation Gradients

These gradients show how the HunterLab color 78.7623, 2.4631, 6.5133 changes by changing the brightness by 10 percent. The first figure shows a shift by +10% for each color and the second figure -10%.

Similar to the brightness gradients but the following saturation gradients show a change of the HunterLab color 78.7623, 2.4631, 6.5133 by changing the saturation by 10% instead.



■ 78.7623, 2.4631,  
6.5133

■ 78.7623, 2.4631,  
6.5133

207.8626, -1.9591,  
14.4143

■ 67.1291, 2.7480,  
5.7622

103.8172, 1.7458,  
8.0992

■ 56.1313, 2.9824,  
5.0373

117.1822, 1.3243,  
8.9300

■ 45.8098, 3.1585,  
4.3407

131.0761, 0.8637,  
9.7855

■ 36.2123, 3.2692,  
3.6728

145.4794, 0.3662,  
10.6652

■ 27.3982, 3.3044,  
3.0340

160.3748, -0.1664,  
11.5685

■ 19.4445, 3.2501,  
2.4238

175.7465, -0.7324,

■ 12.4570, 3.0844,

12.4948

1.8397

191.5801, -1.3304,  
13.4435

■ 5.6987, 5.0312,  
2.1489

0.0000, NaN, NaN

■ 78.7623, 2.4631,  
6.5133

■ 78.7623, 2.4631,  
6.5133

■ 71.6817, 10.5838,  
8.7274

■ 86.2219, -5.3168,  
4.4444

■ 65.0437, 19.0609,  
11.0907

■ 94.0009, -12.7827,  
2.5016

■ 58.9365, 27.8467,  
13.5955

■ 97.0926, -15.6026,  
1.7823

■ 53.4663, 36.7926,  
16.1994

■ 48.7563, 45.5823,  
18.8052

■ 44.9359, 53.6811,  
21.2430

■ 42.1138, 60.3717,  
23.2802

■ 40.3347, 64.9634,  
24.6887

■ 39.4757, 67.2985,  
25.4080

# Harmonies

## Analogous

The Analogous color harmony consists of three colors that are next to each other on the color wheel.



78.7640, 2.7807, 3.1161



78.7623, 2.4631, 6.5133



78.7640, 0.3365, 9.1980

# Triad

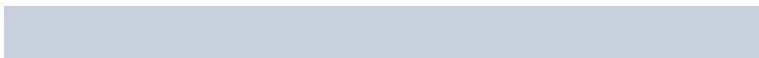
The Triadic color harmony groups three colors that are evenly spaced from another and form a triangle on the color wheel.



78.7640, 2.4609, 6.5146



78.7640, -9.4740, 8.4426



78.7640, -5.4251, -2.5310

# Complementary

The Complementary color scheme is a pair of colors which are on the opposite of each other on the color wheel.



78.7623, 2.4631, 6.5133



83.7089, -10.7362, 2.4448

# Split Complementary

Split-complementary colors differ from the complementary color scheme. The scheme consists of three colors, the original color and two neighbors of the complement color.



78.7640, -8.6495, -0.9614



78.7623, 2.4631, 6.5133



78.7640, -10.9590, 5.4409

# Square

The Square scheme is like the rectangle color scheme, but the four colors are evenly spaced on the color wheel.



78.7640, 2.4609, 6.5146



78.7640, -6.5692, 10.2758



78.7640, -10.6600, 1.9931



78.7640, -1.8164, -2.2116



# Rectangle

The Rectangle color scheme consists of four colors that form a rectangle on the color wheel.



78.7623, 2.4631, 6.5133



78.7640, -1.7963, 10.2694



78.7640, -10.6600, 1.9931



78.7640, -6.5888, -2.2042

# Sweetspot

The Sweet Spot groups the original color and five complimentary colors.



78.7640, 2.4609, 6.5146



97.3313, -2.6139, 6.1535



79.4012, 5.8922, -2.5740



44.7027, -0.8700, 2.9371

0.0000, NaN, NaN



46.2646, -2.4686, 2.5136



# Same Dimension

The Same Dimension uses a secret algorithm to generate beautiful new colors.



78.7640, 2.4609, 6.5146



90.3975, 4.8187, 8.1457



81.7813, -2.7090, 9.8351



37.0148, 1.3270, 3.1187



30.3727, 52.0080, 19.6260



7.9974, 13.6892, 5.1676



# Inverse Universe

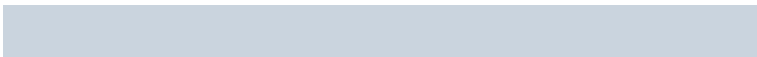
The Inverse Universe completely reimagines the original color for something new.



83.7089, -10.7362, 2.4448



97.4984, -14.1417, 2.2983



80.5720, -5.6696, -1.3053



39.4613, -5.2028, 1.1050



58.4384, -30.9738, -6.1794



15.3859, -8.1552, -1.6262



# Previews

## White Background



This preview shows how the HunterLab color 78.7623, 2.4631, 6.5133 looks on a white background.

## Color Contrast Check

Large Text (above 18pt) WCAG AA × Fail

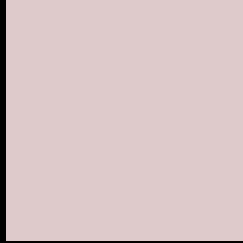
Any Text WCAG AA × Fail

Large Text (above 18pt) WCAG AAA × Fail

Any Text WCAG AAA × Fail



# Black Background



This preview shows how the HunterLab color 78.7623, 2.4631, 6.5133 looks on a black background.

## Color Contrast Check

Large Text (above 18pt) WCAG AA ✓ Pass

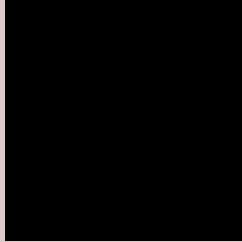
Any Text WCAG AA ✓ Pass

Large Text (above 18pt) WCAG AAA ✓ Pass

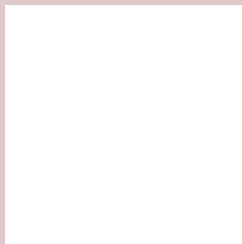
Any Text WCAG AAA ✓ Pass

If you want to check with other color combinations, try the [Color Contrast Checker](#).

## HunterLab 78.7623, 2.4631, 6.5133 Background



This preview shows how black text looks on a background with the HunterLab color 78.7623, 2.4631, 6.5133.



This preview shows how white text looks on a background with the HunterLab color 78.7623, 2.4631,



# Color Blindness Simulation

Color vision deficiency is a very complex topic, and I could not describe the different causes any better than Wikipedia does, so if you want to learn more, you should check out their [article about color blindness](#).

## Dichromacy



### Original Color

78.7623, 2.4631, 6.5133

### Protanopia

78.9627, -2.9256, 5.7110

### Deuteranopia

78.7825, 5.5738, 6.5911



## Tritanopia

78.8123, 6.5537, -0.1949

# Trichromacy



## Original Color

78.7623, 2.4631, 6.5133

## Protanomaly

79.0073, -1.2707, 6.2620

## Deuteranomaly

78.8710, 4.3561, 6.6715

## Tritanomaly

78.8444, 4.8232, 2.3245

# Monochromacy



## Original Color

78.7623, 2.4631, 6.5133

## Achromatopsia

79.4202, -4.2377, 4.3151

## Achromatomaly

79.2117, -1.9430, 5.0691

# CSS Examples

## Text

The CSS property to change the color of the text to HunterLab 78.7623, 2.4631, 6.5133 is called "color". The color property can be set on classes, ids or directly on the HTML element.

This example shows how text in the color `rgb(222, 202, 202)` looks like.

```
.text, #text, p{  
    color:rgb(222, 202, 202)  
}
```

If you want to add a text shadow in that color use the text-shadow property, you can generate a text shadow directly with our [CSS Text Shadow Generator](#).

Here you see how black text with a 4 pixel rgb(222, 202, 202) colored shadow looks like.

```
.shadow{ text-shadow: 4px 4px 2px rgb(222, 202, 202) }
```

## Border

The CSS property to change the border of an element to HunterLab 78.7623, 2.4631, 6.5133 is called "border".

The border property can be set on classes, ids or directly on the HTML element.

This example shows the color as border, it can be applied via the CSS property "border" or "border-color".

```
.border, #border, table{ border:4px solid rgb(222, 202, 202) }
```



If only the border color should be changed use the property border-color.

```
.border{ border-color:rgb(222, 202, 202) }
```

If you want to add a box shadow in that color use:

Here you see how a box with a 4 pixel rgb(222, 202, 202) colored shadow looks like.

```
.boxshadow{ -moz-box-shadow:4px 4px 4px  
4px rgb(222, 202, 202); -webkit-box-  
shadow:4px 4px 4px 4px rgb(222, 202, 202);  
box-shadow:4px 4px 4px 4px rgb(222, 202,  
202) }
```

# Background

The CSS property to change the background color of an element to HunterLab 78.7623, 2.4631, 6.5133 is called "background". The background property can be set on classes, ids or directly on the HTML element.

```
.background, #background, body{  
background: rgb(222, 202, 202) }
```

If only the background color should be changed can be used:

```
.background{ background-color: rgb(222,  
202, 202) }
```

This example shows the color as background, it is applied via the CSS property "background".

To optimize and compress your CSS code, you can use our [online CSS compressor and optimizer](#) based on csstidy. If you want to create a linear or radial gradient as background or border, check our [CSS Gradient Generator](#).

Hey! You found this booklet interesting? Support Converting Colors with the new Membership Option!

The pro membership hides all ads, plus gives you double the colors in the color bucket, and more awesome pro features!

**[Learn more, Memberships starting at \\$2.50/m!](#)**

**Follow me  
on Twitter!**

@ConvertingColor