

# Converting Colors

HunterLab(78.8435, 1.0534,  
19.5755)

Have a look what the booklet for  
HunterLab(78.8435, 1.0534,  
19.5755) contains.

<b>HunterLab(78.8481, 1.0753, 19.6334)</b> .....	3
<b><i>Conversions</i></b> .....	4
<b><i>Details</i></b> .....	6
<b><i>Harmonies</i></b> .....	12
<b><i>Previews</i></b> .....	24
<b><i>Color Blindness Simulation</i></b> .....	28
<b><i>CSS Examples</i></b> .....	31

# Color

**HunterLab(78.8481, 1.0753,  
19.6334)**

# Conversions

## Conversions Part 1

Format	Color
Hex	E7CAAB
RGB	231, 202, 171
RGB Percent	91%, 79%, 67%
CMY	0.0941, 0.2078, 0.3294
CMYK	0.00, 0.13, 0.26, 0.09
HSL	31°, 56%, 79%
HSV	31°, 26%, 91%
XYZ	61.4262, 62.1702, 47.2906
YIQ	207.1370, 27.2350, -3.4930

# Conversions

## Conversions Part 2

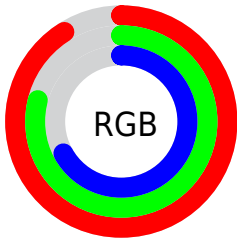
Format	Color
R <sub>Y</sub> B	227, 231, 171
Decimal	15190699
CIE Lab	83.01, 5.55, 19.24
CIE LCh	83, 20.020, 73.916
Yxy	62.1731, 0.3595, 0.3638
Android (android.graphics.Color)	4293380779 (0xFFE7CAAB)
YUV	207.1370, -17.8155, 20.9279
Hunter-Lab	78.8481, 1.0753, 19.6334

# Details

The HunterLab color  $78.8481, 1.0753, 19.6334$  is a light color, and the websafe version is hex `FFCC99`. A complement of this color would be  $74.6555, -6.6217, -14.1549$ , and the grayscale version is  $79.1171, -4.2215, 4.2986$ .

A 20% lighter version of the original color is  $99.1317, -10.1135, 17.8738$ , and  $56.2367, 1.8832, 16.2854$  is the 20% darker color. If you saturate the color by 10%, you get  $75.0446, 3.9875, 24.2090$ , and if you desaturate by 10%, it is  $82.8022, -1.4591, 14.4078$ .

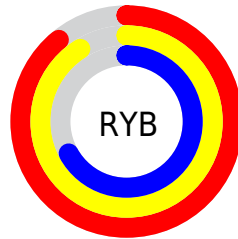
# Distribution



Red (91%)

Green (79%)

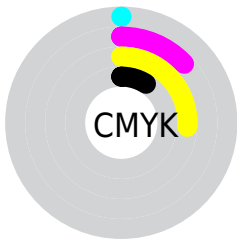
Blue (67%)



Red (89%)

Yellow (91%)

Blue (67%)

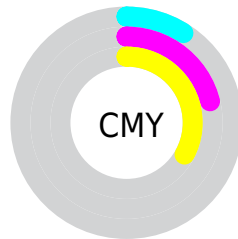


Cyan (0%)

Magenta (13%)

Yellow (26%)

Black (9%)



Cyan (9%)

Magenta (21%)

Yellow (33%)

# Brightness & Saturation Gradients

These gradients show how the HunterLab color 78.8481, 1.0753, 19.6334 changes by changing the brightness by 10 percent. The first figure shows a shift by +10% for each color and the second figure -10%.

Similar to the brightness gradients but the following saturation gradients show a change of the HunterLab color 78.8481, 1.0753, 19.6334 by changing the saturation by 10% instead.



■ 78.8481, 1.0753,  
19.6334

■ 78.8481, 1.0753,  
19.6334

207.9813, -3.8524,  
33.7223

■ 67.2105, 1.4277,  
18.0153

■ 103.9113, 0.2307,  
22.8098

■ 56.2080, 1.7337,  
16.3636

117.2802, -0.2504,  
24.3779

■ 45.8815, 1.9858,  
14.6667

131.1778, -0.7684,  
25.9386

■ 36.2786, 2.1776,  
12.9063

145.5848, -1.3214,  
27.4951

■ 27.4586, 2.3003,  
11.0546

160.4836, -1.9077,  
29.0498

■ 19.4984, 2.3417,  
9.0678

175.8587, -2.5258,

■ 12.5035, 2.2825,

30.6049

7.6959

191.6956, -3.1745,  
32.1619

■ 5.7681, 3.8819,  
4.0377

0.0000, NaN, NaN

■ 78.8481, 1.0753,  
19.6334

■ 78.8481, 1.0753,  
19.6334

■ 75.0446, 3.9875,  
24.2090

■ 82.8022, -1.4591,  
14.4078

■ 71.3987, 7.3064,  
28.0670

■ 86.8903, -3.6322,  
8.5903

■ 67.9254, 11.0444,  
31.1440

■ 91.1037, -5.4722,  
2.2384

■ 64.6384, 15.2068,  
33.3806

■ 95.1430, -8.6027,  
-0.4804

■ 61.5516, 19.7833,  
34.7315

■ 97.8412, -12.9291,  
2.7323

■ 58.6778, 24.7417,  
35.1803

■ 56.0272, 30.0170,  
34.7665

■ 55.0186, 32.1804,  
34.4656

# Harmonies

## Analogous

The Analogous color harmony consists of three colors that are next to each other on the color wheel.



78.8499, 9.8145, 15.7313



78.8481, 1.0753, 19.6334



78.8499, -8.6886, 19.7724

# Triad

The Triadic color harmony groups three colors that are evenly spaced from another and form a triangle on the color wheel.



78.8499, 1.0727, 19.6345



78.8499, -21.6667, -0.1380



78.8499, 9.2768, -9.7303

# Complementary

The Complementary color scheme is a pair of colors which are on the opposite of each other on the color wheel.



78.8481, 1.0753, 19.6334



74.6555, -6.6217, -14.1549

# Split Complementary

Split-complementary colors differ from the complementary color scheme. The scheme consists of three colors, the original color and two neighbors of the complement color.



78.8499, 0.3678, -15.1464



78.8481, 1.0753, 19.6334



78.8499, -17.3207, -9.1684

# Square

The Square scheme is like the rectangle color scheme, but the four colors are evenly spaced on the color wheel.



78.8499, 1.0727, 19.6345



78.8499, -21.4987, 9.0944



78.8499, -9.3600, -14.9291



78.8499, 14.7067, -0.8328



# Rectangle

The Rectangle color scheme consists of four colors that form a rectangle on the color wheel.



78.8481, 1.0753, 19.6334



78.8499, -14.4441, 17.7551



78.8499, -9.3600, -14.9291



78.8499, 6.5712, -12.0642

# Sweetspot

The Sweet Spot groups the original color and five complimentary colors.



78.8499, 1.0727, 19.6345



96.2422, -3.5916, 11.0077



70.9123, 21.7590, -1.6114



44.2038, -1.4974, 5.5577

0.0000, NaN, NaN



46.2646, -2.4686, 2.5136



# Same Dimension

The Same Dimension uses a secret algorithm to generate beautiful new colors.



78.8499, 1.0727, 19.6345



85.9736, 2.8386, 24.7181



87.7014, -13.9361, 27.7500



39.4889, -1.3472, 4.9341



41.4970, 23.4026, 25.9800



12.0763, 4.6227, 7.5223



# Inverse Universe

The Inverse Universe completely reimagines the original color for something new.



74.6555, -6.6217, -14.1549



80.3828, -7.3703, -20.3797



66.0809, 8.6172, -26.9627



38.7697, -2.6769, -0.8465



31.5147, 9.6164, -60.1497

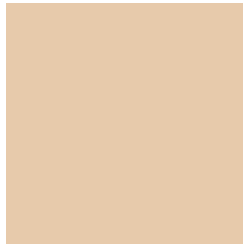


9.5877, 0.6784, -13.4483



# Previews

## White Background



This preview shows how the HunterLab color 78.8481, 1.0753, 19.6334 looks on a white background.

## Color Contrast Check

Large Text (above 18pt) WCAG AA × Fail

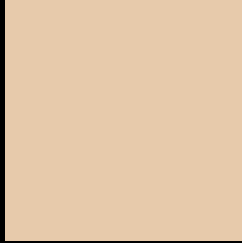
Any Text WCAG AA × Fail

Large Text (above 18pt) WCAG AAA × Fail

Any Text WCAG AAA × Fail



# Black Background



This preview shows how the HunterLab color 78.8481, 1.0753, 19.6334 looks on a black background.

## Color Contrast Check

Large Text (above 18pt) WCAG AA ✓ Pass

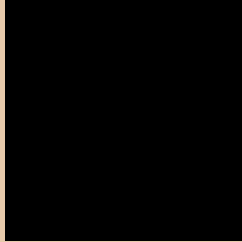
Any Text WCAG AA ✓ Pass

Large Text (above 18pt) WCAG AAA ✓ Pass

Any Text WCAG AAA ✓ Pass

If you want to check with other color combinations, try the [Color Contrast Checker](#).

## HunterLab 78.8481, 1.0753, 19.6334 Background



This preview shows how black text looks on a background with the HunterLab color 78.8481, 1.0753, 19.6334.



This preview shows how white text looks on a background with the HunterLab color 78.8481, 1.0753, 19.6334.



# Color Blindness Simulation

Color vision deficiency is a very complex topic, and I could not describe the different causes any better than Wikipedia does, so if you want to learn more, you should check out their [article about color blindness](#).

## Dichromacy



### Original Color

78.8481, 1.0753, 19.6334

### Protanopia

78.7815, -5.2580, 18.6990

### Deuteranopia

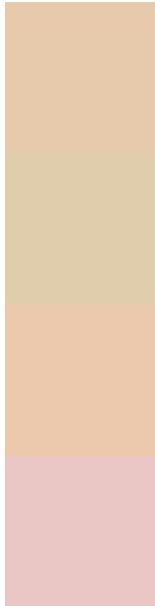
78.8518, 5.6807, 19.3405



## Tritanopia

78.7821, 12.1590, 1.8817

# Trichromacy



## Original Color

78.8481, 1.0753, 19.6334

## Protanomaly

78.9488, -3.1606, 19.2815

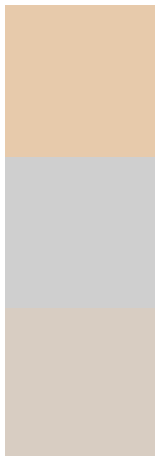
## Deuteranomaly

78.8162, 4.0557, 19.2768

## Tritanomaly

78.6841, 7.9535, 8.8206

# Monochromacy



## Original Color

78.8481, 1.0753, 19.6334

## Achromatopsia

78.9912, -4.2148, 4.2917

## Achromatomaly

78.8395, -2.3774, 10.1558

# CSS Examples

## Text

The CSS property to change the color of the text to HunterLab 78.8481, 1.0753, 19.6334 is called "color". The color property can be set on classes, ids or directly on the HTML element.

This example shows how text in the color `rgb(231, 202, 171)` looks like.

```
.text, #text, p{  
    color:rgb(231, 202, 171)  
}
```

If you want to add a text shadow in that color use the text-shadow property, you can generate a text shadow directly with our [CSS Text Shadow Generator](#).

Here you see how black text with a 4 pixel rgb(231, 202, 171) colored shadow looks like.

```
.shadow{ text-shadow: 4px 4px 2px rgb(231, 202, 171) }
```

## Border

The CSS property to change the border of an element to HunterLab 78.8481, 1.0753, 19.6334 is called "border". The border property can be set on classes, ids or directly on the HTML element.

This example shows the color as border, it can be applied via the CSS property "border" or "border-color".

```
.border, #border, table{ border:4px solid rgb(231, 202, 171) }
```



If only the border color should be changed use the property `border-color`.

```
.border{ border-color:rgb(231, 202, 171) }
```

If you want to add a box shadow in that color use:

Here you see how a box with a 4 pixel `rgb(231, 202, 171)` colored shadow looks like.

```
.boxshadow{ -moz-box-shadow:4px 4px 4px  
4px rgb(231, 202, 171); -webkit-box-  
shadow:4px 4px 4px 4px rgb(231, 202, 171);  
box-shadow:4px 4px 4px 4px rgb(231, 202,  
171) }
```

# Background

The CSS property to change the background color of an element to HunterLab 78.8481, 1.0753, 19.6334 is called "background". The background property can be set on classes, ids or directly on the HTML element.

```
.background, #background, body{  
background: rgb(231, 202, 171) }
```

If only the background color should be changed can be used:

```
.background{ background-color: rgb(231,  
202, 171) }
```

This example shows the color as background, it is applied via the CSS property "background".

To optimize and compress your CSS code, you can use our [online CSS compressor and optimizer](#) based on csstidy. If you want to create a linear or radial gradient as background or border, check our [CSS Gradient Generator](#).

Hey! You found this booklet interesting? Support Converting Colors with the new Membership Option!

The pro membership hides all ads, plus gives you double the colors in the color bucket, and more awesome pro features!

**[Learn more, Memberships starting at \\$2.50/m!](#)**

**Follow me  
on Twitter!**

@ConvertingColor