

Converting Colors

HunterLab(78.8435, 1.2019,
10.2435)

Have a look what the booklet for
HunterLab(78.8435, 1.2019,
10.2435) contains.

HunterLab(78.9271, 1.0212, 10.3120)	3
<i>Conversions</i>	4
<i>Details</i>	6
<i>Harmonies</i>	12
<i>Previews</i>	24
<i>Color Blindness Simulation</i>	28
<i>CSS Examples</i>	31

Color

**HunterLab(78.9271, 1.0212,
10.3120)**

Conversions

Conversions Part 1

Format	Color
Hex	DFCBC2
RGB	223, 203, 194
RGB Percent	87%, 80%, 76%
CMY	0.1255, 0.2039, 0.2392
CMYK	0.00, 0.09, 0.13, 0.13
HSL	19°, 31%, 82%
HSV	19°, 13%, 87%
XYZ	61.5249, 62.2949, 59.8203
YIQ	207.9540, 14.8090, 1.4410

Conversions

Conversions Part 2

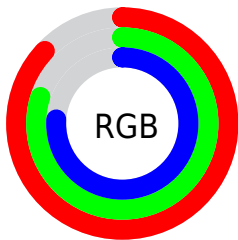
Format	Color
R _Y B	223, 207, 194
Decimal	14666690
CIE Lab	83.07, 5.49, 7.01
CIE LCh	83, 8.904, 51.904
Yxy	62.2976, 0.3350, 0.3392
Android (android.graphics.Color)	4292856770 (0xFFDFCBC2)
YUV	207.9540, -6.8793, 13.1953
Hunter-Lab	78.9271, 1.0212, 10.3120

Details

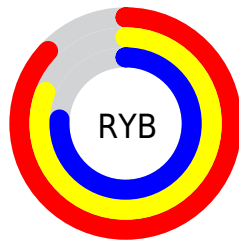
The HunterLab color **78.9271, 1.0212, 10.3120** is a light color, and the websafe version is hex **CCCCCC**. A complement of this color would be **80.5536, -8.8699, -1.9028**, and the grayscale version is **79.4261, -4.2380, 4.3154**.

A 20% lighter version of the original color is **99.8409, -6.2079, 7.7041**, and **56.3145, 1.7058, 8.6087** is the 20% darker color. If you saturate the color by 10%, you get **73.7993, 5.7034, 14.3391**, and if you desaturate by 10%, it is **84.2630, -3.3353, 6.0083**.

Distribution



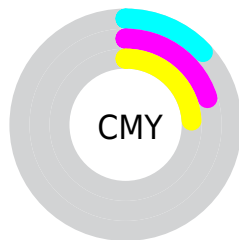
- Red (87%)
- Green (80%)
- Blue (76%)



- Red (87%)
- Yellow (81%)
- Blue (76%)



- Cyan (0%)
- Magenta (9%)
- Yellow (13%)
- Black (13%)



- Cyan (13%)
- Magenta (20%)
- Yellow (24%)

Brightness & Saturation Gradients

These gradients show how the HunterLab color 78.9271, 1.0212, 10.3120 changes by changing the brightness by 10 percent. The first figure shows a shift by +10% for each color and the second figure -10%.

Similar to the brightness gradients but the following saturation gradients show a change of the HunterLab color 78.9271, 1.0212, 10.3120 by changing the saturation by 10% instead.

■ 78.9271, 1.0212,
10.3120

■ 78.9271, 1.0212,
10.3120

208.0903, -3.9269,
19.8047

■ 67.2854, 1.3767,
9.3411

■ 103.9979, 0.1717,
12.3034

■ 56.2785, 1.6857,
8.3824

117.3703, -0.3118,
13.3231

■ 45.9474, 1.9410,
7.4349

131.2714, -0.8322,
14.3599

■ 36.3395, 2.1362,
6.4946

145.6816, -1.3875,
15.4140

■ 27.5142, 2.2628,
5.5554

160.5837, -1.9760,
16.4854

■ 19.5480, 2.3083,
4.6066

175.9618, -2.5963,

■ 12.5462, 2.2538,

17.5744

3.6270

191.8017, -3.2470,
18.6808

■ 5.8312, 3.7936,
4.0818

0.0000, NaN, NaN

■ 78.9271, 1.0212,
10.3120

■ 78.9271, 1.0212,
10.3120

■ 73.7993, 5.7034,
14.3391

■ 84.2630, -3.3353,
6.0083

■ 68.9002, 10.7458,
18.0315

■ 89.7799, -7.3904,
1.4676

■ 64.2615, 16.1651,
21.3234

■ 95.2587, -12.3004,
-0.4022

■ 59.9180, 21.9629,
24.1342

■ 97.1741, -15.3104,
1.8861

■ 55.9093, 28.1114,
26.3715

■ 52.2786, 34.5367,
27.9385

■ 49.0704, 41.1010,
28.7510

■ 46.3261, 47.5874,
28.7715

■ 44.6921, 51.8914,
28.4475

Harmonies

Analogous

The Analogous color harmony consists of three colors that are next to each other on the color wheel.



78.9289, 3.7070, 7.2114



78.9271, 1.0212, 10.3120



78.9289, -3.0326, 11.7848

Triad

The Triadic color harmony groups three colors that are evenly spaced from another and form a triangle on the color wheel.



78.9289, 1.0189, 10.3132



78.9289, -12.3383, 5.4102



78.9289, -1.0665, -3.4597

Complementary

The Complementary color scheme is a pair of colors which are on the opposite of each other on the color wheel.



78.9271, 1.0212, 10.3120



80.5536, -8.8699, -1.9028

Split Complementary

Split-complementary colors differ from the complementary color scheme. The scheme consists of three colors, the original color and two neighbors of the complement color.



78.9289, -5.3918, -4.0063



78.9271, 1.0212, 10.3120



78.9289, -11.8377, 1.2656

Square

The Square scheme is like the rectangle color scheme, but the four colors are evenly spaced on the color wheel.



78.9289, 1.0189, 10.3132



78.9289, -10.6999, 9.0559



78.9289, -9.3173, -2.2351



78.9289, 2.4849, -0.7795

Rectangle

The Rectangle color scheme consists of four colors that form a rectangle on the color wheel.



78.9271, 1.0212, 10.3120



78.9289, -5.9361, 11.7020



78.9289, -9.3173, -2.2351



78.9289, -2.4804, -3.9047

Sweetspot

The Sweet Spot groups the original color and five complimentary colors.



78.9289, 1.0189, 10.3132



97.4448, -3.3794, 7.5218



76.9043, 9.0911, -1.6554



44.8619, -1.3903, 3.6593

0.0000, NaN, NaN



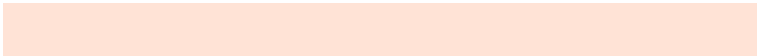
46.2646, -2.4686, 2.5136

Same Dimension

The Same Dimension uses a secret algorithm to generate beautiful new colors.



78.9289, 1.0189, 10.3132



89.9951, 2.8422, 13.5034



83.2542, -6.2593, 14.8430



37.9359, -0.2656, 4.1370



34.5278, 39.0522, 21.9595



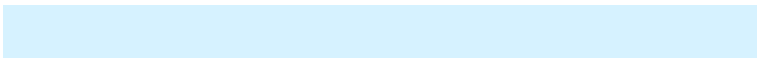
9.9108, 8.0815, 6.2485

Inverse Universe

The Inverse Universe completely reimagines the original color for something new.



80.5536, -8.8699, -1.9028



92.3300, -11.3789, -4.0585



76.1668, -1.6408, -7.4388



38.4925, -3.6513, -0.0467



41.0916, -8.0202, -34.0477



11.5220, -3.1524, -7.5964

Previews

White Background



This preview shows how the HunterLab color 78.9271, 1.0212, 10.3120 looks on a white background.

Color Contrast Check

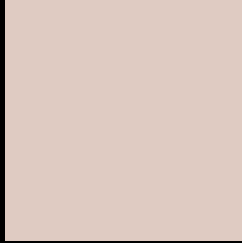
Large Text (above 18pt) WCAG AA × Fail

Any Text WCAG AA × Fail

Large Text (above 18pt) WCAG AAA × Fail

Any Text WCAG AAA × Fail

Black Background



This preview shows how the HunterLab color 78.9271, 1.0212, 10.3120 looks on a black background.

Color Contrast Check

Large Text (above 18pt) WCAG AA ✓ Pass

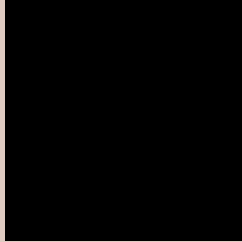
Any Text WCAG AA ✓ Pass

Large Text (above 18pt) WCAG AAA ✓ Pass

Any Text WCAG AAA ✓ Pass

If you want to check with other color combinations, try the [Color Contrast Checker](#).

HunterLab 78.9271, 1.0212, 10.3120 Background



This preview shows how black text looks on a background with the HunterLab color 78.9271, 1.0212, 10.3120.



This preview shows how white text looks on a background with the HunterLab color 78.9271, 1.0212,

Color Blindness Simulation

Color vision deficiency is a very complex topic, and I could not describe the different causes any better than Wikipedia does, so if you want to learn more, you should check out their [article about color blindness](#).

Dichromacy



Original Color

78.9271, 1.0212, 10.3120

Protanopia

78.9140, -3.5683, 9.3265

Deuteranopia

78.9965, 5.8805, 10.0301



Tritanopia

78.9833, 7.0594, 0.5325

Trichromacy



Original Color

78.9271, 1.0212, 10.3120

Protanomaly

78.9649, -1.8874, 9.8590

Deuteranomaly

78.9756, 4.2980, 9.9792

Tritanomaly

78.9214, 4.8309, 4.3679

Monochromacy



Original Color

78.9271, 1.0212, 10.3120

Achromatopsia

79.4202, -4.2377, 4.3151

Achromatomaly

79.1205, -2.4404, 6.3720

CSS Examples

Text

The CSS property to change the color of the text to HunterLab 78.9271, 1.0212, 10.3120 is called "color". The color property can be set on classes, ids or directly on the HTML element.

This example shows how text in the color `rgb(223, 203, 194)` looks like.

```
.text, #text, p{  
    color:rgb(223, 203, 194)  
}
```

If you want to add a text shadow in that color use the text-shadow property, you can generate a text shadow directly with our [CSS Text Shadow Generator](#).

Here you see how black text with a 4 pixel rgb(223, 203, 194) colored shadow looks like.

```
.shadow{ text-shadow: 4px 4px 2px rgb(223, 203, 194) }
```

Border

The CSS property to change the border of an element to HunterLab 78.9271, 1.0212, 10.3120 is called "border". The border property can be set on classes, ids or directly on the HTML element.

This example shows the color as border, it can be applied via the CSS property "border" or "border-color".

```
.border, #border, table{ border:4px solid rgb(223, 203, 194) }
```


If only the border color should be changed use the property border-color.

```
.border{ border-color:rgb(223, 203, 194) }
```

If you want to add a box shadow in that color use:

Here you see how a box with a 4 pixel rgb(223, 203, 194) colored shadow looks like.

```
.boxshadow{ -moz-box-shadow:4px 4px 4px  
4px rgb(223, 203, 194); -webkit-box-  
shadow:4px 4px 4px 4px rgb(223, 203, 194);  
box-shadow:4px 4px 4px 4px rgb(223, 203,  
194) }
```

Background

The CSS property to change the background color of an element to HunterLab 78.9271, 1.0212, 10.3120 is called "background". The background property can be set on classes, ids or directly on the HTML element.

```
.background, #background, body{  
background: rgb(223, 203, 194) }
```

If only the background color should be changed can be used:

```
.background{ background-color: rgb(223,  
203, 194) }
```

This example shows the color as background, it is applied via the CSS property "background".

To optimize and compress your CSS code, you can use our [online CSS compressor and optimizer](#) based on csstidy. If you want to create a linear or radial gradient as background or border, check our [CSS Gradient Generator](#).

Hey! You found this booklet interesting? Support Converting Colors with the new Membership Option!

The pro membership hides all ads, plus gives you double the colors in the color bucket, and more awesome pro features!

[Learn more, Memberships starting at \\$2.50/m!](#)

**Follow me
on Twitter!**

@ConvertingColor