

Converting Colors

HunterLab(78.8766, 6.9858,
8.0386)

Have a look what the booklet for
HunterLab(78.8766, 6.9858, 8.0386)
contains.

HunterLab(78.8202, 7.0270, 8.0471)	3
<i>Conversions</i>	4
<i>Details</i>	6
<i>Harmonies</i>	12
<i>Previews</i>	24
<i>Color Blindness Simulation</i>	28
<i>CSS Examples</i>	31

Color

**HunterLab(78.8202, 7.0270,
8.0471)**

Conversions

Conversions Part 1

Format	Color
Hex	E8C7C7
RGB	232, 199, 199
RGB Percent	91%, 78%, 78%
CMY	0.0902, 0.2196, 0.2196
CMYK	0.00, 0.14, 0.14, 0.09
HSL	0°, 42%, 85%
HSV	0°, 14%, 91%
XYZ	64.0110, 62.1262, 62.6507
YIQ	208.8670, 19.6680, 6.9960

Conversions

Conversions Part 2

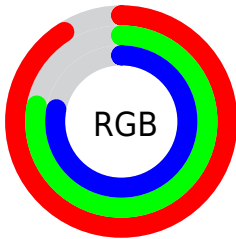
Format	Color
R _Y B	232, 199, 199
Decimal	15255495
CIE _{Lab}	82.98, 11.63, 4.31
CIE _{LCh}	83, 12.400, 20.334
Y _{xy}	62.1290, 0.3391, 0.3291
Android (android.graphics.Color)	4293445575 (0xFFE8C7C7)
Y _{UV}	208.8670, -4.8644, 20.2876
Hunter-Lab	78.8202, 7.0270, 8.0471

Details

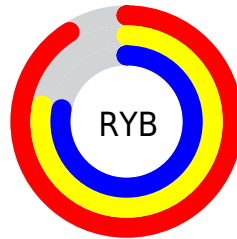
The HunterLab color $78.8202, 7.0270, 8.0471$ is a light color, and the websafe version is hex FFCCCC . A complement of this color would be $86.9942, -14.8167, 1.3142$, and the grayscale version is $79.8083, -4.2584, 4.3361$.

A 20% lighter version of the original color is $100.0000, -5.3358, 5.4332$, and $56.1473, 7.1010, 6.4346$ is the 20% darker color. If you saturate the color by 10%, you get $71.5949, 15.7829, 10.4631$, and if you desaturate by 10%, it is $86.4818, -1.3592, 5.7903$.

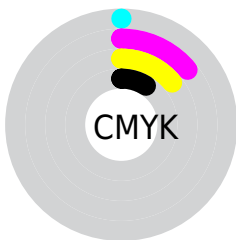
Distribution



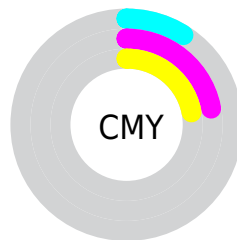
- Red (91%)
- Green (78%)
- Blue (78%)



- Red (91%)
- Yellow (78%)
- Blue (78%)



- Cyan (0%)
- Magenta (14%)
- Yellow (14%)
- Black (9%)



- Cyan (9%)
- Magenta (22%)
- Yellow (22%)

Brightness & Saturation Gradients

These gradients show how the HunterLab color 78.8202, 7.0270, 8.0471 changes by changing the brightness by 10 percent. The first figure shows a shift by +10% for each color and the second figure -10%.

Similar to the brightness gradients but the following saturation gradients show a change of the HunterLab color 78.8202, 7.0270, 8.0471 by changing the saturation by 10% instead.

78.8202, 7.0270,
8.0471

78.8202, 7.0270,
8.0471

207.9427, 4.2182,
16.5746

67.1840, 7.0959,
7.2099

103.8807, 6.7132,
9.7923

56.1830, 7.1035,
6.3934

117.2483, 6.4818,
10.6974

45.8582, 7.0400,
5.5987

131.1447, 6.2046,
11.6242

36.2570, 6.8956,
4.8246

145.5505, 5.8845,
12.5726

27.4390, 6.6574,
4.0690

160.4482, 5.5237,
13.5421

19.4809, 6.3069,
3.3275

175.8222, 5.1246,

12.4884, 5.8172,

14.5325

2.5908

191.6580, 4.6888,
15.5435

■ 5.7456, 8.5116,
3.4215

0.0000, NaN, NaN

■ 78.8202, 7.0270,
8.0471

■ 78.8202, 7.0270,
8.0471

■ 71.5949, 15.7829,
10.4631

■ 86.4818, -1.3592,
5.7903

■ 64.8831, 24.9000,
13.0349

■ 94.5094, -9.3934,
3.6759

■ 58.7890, 34.2775,
15.7384

■ 97.9265, -12.6259,
2.8401

■ 53.4356, 43.6723,
18.5008

■ 48.9592, 52.6288,
21.1791

■ 45.4898, 60.4619,
23.5531

■ 43.1126, 66.3864,
25.3659

■ 41.8150, 69.8443,
26.4297

■ 41.4205, 70.9300,
26.7649

Harmonies

Analogous

The Analogous color harmony consists of three colors that are next to each other on the color wheel.



78.8220, 7.6174, 2.4052



78.8202, 7.0270, 8.0471



78.8220, 3.3720, 12.3604

Triad

The Triadic color harmony groups three colors that are evenly spaced from another and form a triangle on the color wheel.



78.8220, 7.0246, 8.0484



78.8220, -12.9866, 11.0475



78.8220, -6.1583, -7.4463

Complementary

The Complementary color scheme is a pair of colors which are on the opposite of each other on the color wheel.



78.8202, 7.0270, 8.0471



86.9942, -14.8167, 1.3142

Split Complementary

Split-complementary colors differ from the complementary color scheme. The scheme consists of three colors, the original color and two neighbors of the complement color.



78.8220, -11.5158, -4.7346



78.8202, 7.0270, 8.0471



78.8220, -15.3787, 6.1304

Square

The Square scheme is like the rectangle color scheme, but the four colors are evenly spaced on the color wheel.



78.8220, 7.0246, 8.0484



78.8220, -8.2210, 13.9990



78.8220, -14.8485, 0.3379



78.8220, -0.1171, -6.8353

Rectangle

The Rectangle color scheme consists of four colors that form a rectangle on the color wheel.



78.8202, 7.0270, 8.0471



78.8220, -0.2472, 14.0373



78.8220, -14.8485, 0.3379



78.8220, -8.0959, -6.8858

Sweetspot

The Sweet Spot groups the original color and five complimentary colors.



78.8220, 7.0246, 8.0484



96.4495, -1.6985, 6.3965



79.8935, 12.7131, -7.2037



44.3164, -0.4661, 3.0444

0.0000, NaN, NaN



46.2646, -2.4686, 2.5136

Same Dimension

The Same Dimension uses a secret algorithm to generate beautiful new colors.



78.8220, 7.0246, 8.0484



85.3878, 10.5692, 9.7112



83.7473, -1.5871, 13.3230



37.9055, 1.3686, 3.1967



30.8621, 52.8483, 19.9423



8.3901, 14.3641, 5.4214

Inverse Universe

The Inverse Universe completely reimagines the original color for something new.



86.9942, -14.8167, 1.3142



96.2713, -18.5515, 0.7317



81.7466, -6.4794, -5.1135



40.4180, -5.3369, 1.1294



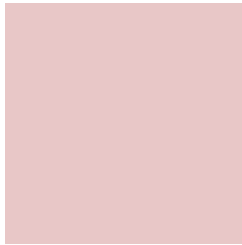
59.3849, -31.4781, -6.2738



16.1435, -8.5573, -1.7051

Previews

White Background



This preview shows how the HunterLab color 78.8202, 7.0270, 8.0471 looks on a white background.

Color Contrast Check

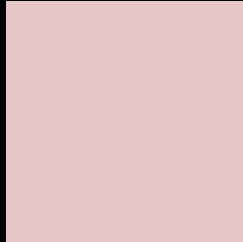
Large Text (above 18pt) WCAG AA × Fail

Any Text WCAG AA × Fail

Large Text (above 18pt) WCAG AAA × Fail

Any Text WCAG AAA × Fail

Black Background



This preview shows how the HunterLab color 78.8202, 7.0270, 8.0471 looks on a black background.

Color Contrast Check

Large Text (above 18pt) WCAG AA ✓ Pass

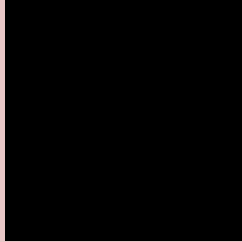
Any Text WCAG AA ✓ Pass

Large Text (above 18pt) WCAG AAA ✓ Pass

Any Text WCAG AAA ✓ Pass

If you want to check with other color combinations, try the [Color Contrast Checker](#).

HunterLab 78.8202, 7.0270, 8.0471 Background



This preview shows how black text looks on a background with the HunterLab color 78.8202, 7.0270, 8.0471.



This preview shows how white text looks on a background with the HunterLab color 78.8202, 7.0270,

8.0471.

Color Blindness Simulation

Color vision deficiency is a very complex topic, and I could not describe the different causes any better than Wikipedia does, so if you want to learn more, you should check out their [article about color blindness](#).

Dichromacy



Original Color

78.8202, 7.0270, 8.0471

Protanopia

78.9324, -3.0911, 6.1438

Deuteranopia

78.9019, 5.7956, 8.1180



Tritanopia

78.8533, 10.9164, 1.9461

Trichromacy



Original Color

78.8202, 7.0270, 8.0471

Protanomaly

78.7631, 0.9297, 6.4874

Deuteranomaly

79.0070, 6.1476, 8.2429

Tritanomaly

78.8776, 9.1968, 4.3928

Monochromacy



Original Color

78.8202, 7.0270, 8.0471

Achromatopsia

79.8497, -4.2606, 4.3384

Achromatomaly

79.2604, -0.2799, 5.6300

CSS Examples

Text

The CSS property to change the color of the text to HunterLab 78.8202, 7.0270, 8.0471 is called "color". The color property can be set on classes, ids or directly on the HTML element.

This example shows how text in the color `rgb(232, 199, 199)` looks like.

```
.text, #text, p{  
    color:rgb(232, 199, 199)  
}
```

If you want to add a text shadow in that color use the text-shadow property, you can generate a text shadow directly with our [CSS Text Shadow Generator](#).

Here you see how black text with a 4 pixel rgb(232, 199, 199) colored shadow looks like.

```
.shadow{ text-shadow: 4px 4px 2px rgb(232, 199, 199) }
```

Border

The CSS property to change the border of an element to HunterLab 78.8202, 7.0270, 8.0471 is called "border". The border property can be set on classes, ids or directly on the HTML element.

This example shows the color as border, it can be applied via the CSS property "border" or "border-color".

```
.border, #border, table{ border:4px solid rgb(232, 199, 199) }
```


If only the border color should be changed use the property `border-color`.

```
.border{ border-color:rgb(232, 199, 199) }
```

If you want to add a box shadow in that color use:

Here you see how a box with a 4 pixel `rgb(232, 199, 199)` colored shadow looks like.

```
.boxshadow{ -moz-box-shadow:4px 4px 4px 4px rgb(232, 199, 199); -webkit-box-shadow:4px 4px 4px 4px rgb(232, 199, 199); box-shadow:4px 4px 4px 4px rgb(232, 199, 199) }
```

Background

The CSS property to change the background color of an element to HunterLab 78.8202, 7.0270, 8.0471 is called "background". The background property can be set on classes, ids or directly on the HTML element.

```
.background, #background, body{  
background: rgb(232, 199, 199) }
```

If only the background color should be changed can be used:

```
.background{ background-color: rgb(232,  
199, 199) }
```

This example shows the color as background, it is applied via the CSS property "background".

To optimize and compress your CSS code, you can use our [online CSS compressor and optimizer](#) based on csstidy. If you want to create a linear or radial gradient as background or border, check our [CSS Gradient Generator](#).

Hey! You found this booklet interesting? Support Converting Colors with the new Membership Option!

The pro membership hides all ads, plus gives you double the colors in the color bucket, and more awesome pro features!

[Learn more, Memberships starting at \\$2.50/m!](#)

**Follow me
on Twitter!**

@ConvertingColor