

Converting Colors

HunterLab(79.0674, 20.8211,
-12.7324)

Have a look what the booklet for
HunterLab(79.0674, 20.8211,
-12.7324) contains.

HunterLab(79.0669, 20.8216, -12.7327)	3
<i>Conversions</i>	4
<i>Details</i>	6
<i>Harmonies</i>	12
<i>Previews</i>	24
<i>Color Blindness Simulation</i>	28
<i>CSS Examples</i>	31

Color

**HunterLab(79.0669, 20.8216,
-12.7327)**

Conversions

Conversions Part 1

Format	Color
Hex	F0C0F0
RGB	240, 192, 240
RGB Percent	94%, 75%, 94%
CMY	0.0588, 0.2470, 0.0588
CMYK	0.00, 0.20, 0.00, 0.06
HSL	300°, 62%, 85%
HSV	300°, 20%, 94%
XYZ	70.5129, 62.5157, 90.7883
YIQ	211.8240, 13.2000, 25.1040

Conversions

Conversions Part 2

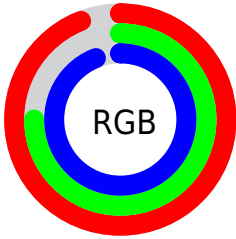
Format	Color
R _Y B	240, 192, 240
Decimal	15778032
CIE Lab	83.19, 25.10, -17.23
CIE LCh	83, 30.446, 325.534
Yxy	62.5185, 0.3150, 0.2793
Android (android.graphics.Color)	4293968112 (0xFFFF0C0F0)
YUV	211.8240, 13.8908, 24.7104
Hunter-Lab	79.0669, 20.8216, -12.7327

Details

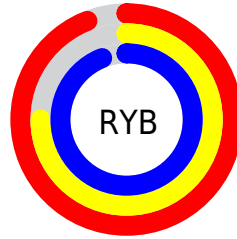
The HunterLab color $79.0669, 20.8216, -12.7327$ is a light color, and the websafe version is hex $FFCCFF$. A complement of this color would be $87.9399, -27.2048, 20.0873$, and the grayscale version is $81.0041, -4.3222, 4.4011$.

A 20% lighter version of the original color is $98.0976, -2.1450, 3.2290$, and $56.4163, 19.9440, -12.5447$ is the 20% darker color. If you saturate the color by 10%, you get $72.6801, 34.0871, -21.8688$, and if you desaturate by 10%, it is $85.9834, 7.7632, -3.7275$.

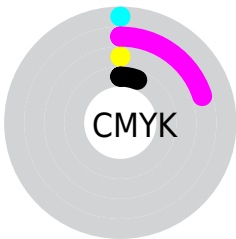
Distribution



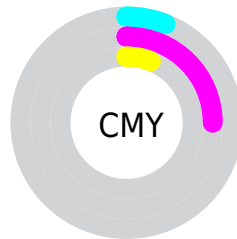
- Red (94%)
- Green (75%)
- Blue (94%)



- Red (94%)
- Yellow (75%)
- Blue (94%)



- Cyan (0%)
- Magenta (20%)
- Yellow (0%)
- Black (6%)



- Cyan (6%)
- Magenta (25%)
- Yellow (6%)

Brightness & Saturation Gradients

These gradients show how the HunterLab color 79.0669, 20.8216, -12.7327 changes by changing the brightness by 10 percent. The first figure shows a shift by +10% for each color and the second figure -10%.

Similar to the brightness gradients but the following saturation gradients show a change of the HunterLab color 79.0669, 20.8216, -12.7327 by changing the saturation by 10% instead.

79.0669, 20.8216,
-12.7327

79.0669, 20.8216,
-12.7327

208.2834, 22.5223,
-11.1155

67.4179, 20.2994,
-12.6607

104.1511, 21.6243,
-12.7008

56.4034, 19.6901,
-12.5281

117.5298, 21.9221,
-12.6073

46.0641, 18.9813,
-12.3290

131.4369, 22.1571,
-12.4655

36.4475, 18.1603,
-12.0596

145.8530, 22.3336,
-12.2781

27.6126, 17.2120,
-11.7185

160.7608, 22.4553,
-12.0474

19.6358, 16.1193,
-11.3120

176.1444, 22.5255,

12.6220, 14.8707,

-11.7755

-10.8748

191.9896, 22.5470,
-11.4643

■ 5.9411, 18.2299,
-13.1406

0.0000, NaN, -NF

■ 79.0669, 20.8216,
-12.7327

■ 79.0669, 20.8216,
-12.7327

■ 72.6801, 34.0871,
-21.8688

■ 85.9834, 7.7632,
-3.7275

■ 66.9066, 47.3575,
-30.9973

■ 93.3490, -4.9830,
5.0733

■ 61.8473, 60.2627,
-39.8646

■ 98.1514, -12.7737,
10.4579

■ 57.6050, 72.2441,
-48.0889

■ 98.1514, -12.7737,
10.4578

■ 54.2698, 82.5796,
-55.1775

■ 98.1514, -12.7736,
10.4577

■ 51.8951, 90.5240,
-60.6227

■ 98.1514, -12.7736,
10.4576

■ 50.4680, 95.5659,
-64.0770

■ 98.1514, -12.7736,
10.4575

■ 49.8165, 97.9403,
-65.7033

■ 98.1514, -12.7735,
10.4574

■ 49.8164, 97.9406,
-65.7035

■ 98.1514, -12.7735,
10.4574

Harmonies

Analogous

The Analogous color harmony consists of three colors that are next to each other on the color wheel.



79.0686, 8.5132, -24.4592



79.0669, 20.8216, -12.7327



79.0686, 26.4252, 2.1514

Triad

The Triadic color harmony groups three colors that are evenly spaced from another and form a triangle on the color wheel.



79.0686, 20.8194, -12.7310



79.0686, -1.9791, 26.9448



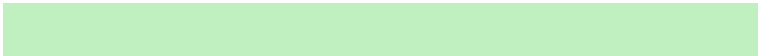
79.0686, -28.4568, -8.3723

Complementary

The Complementary color scheme is a pair of colors which are on the opposite of each other on the color wheel.



79.0669, 20.8216, -12.7327



87.9399, -27.2048, 20.0873

Split Complementary

Split-complementary colors differ from the complementary color scheme. The scheme consists of three colors, the original color and two neighbors of the complement color.



79.0686, -30.8145, 6.3975



79.0669, 20.8216, -12.7327



79.0686, -16.2011, 25.1635

Square

The Square scheme is like the rectangle color scheme, but the four colors are evenly spaced on the color wheel.



79.0686, 20.8194, -12.7310



79.0686, 12.6579, 23.6430



79.0686, -26.4912, 18.2300



79.0686, -19.7969, -21.6334

Rectangle

The Rectangle color scheme consists of four colors that form a rectangle on the color wheel.



79.0669, 20.8216, -12.7327



79.0686, 25.3267, 11.2624



79.0686, -26.4912, 18.2300



79.0686, -29.9840, -3.3508

Sweetspot

The Sweet Spot groups the original color and five complimentary colors.



79.0686, 20.8194, -12.7310



95.1965, 2.8409, -0.2139



74.2968, 5.2880, -19.9139



43.8048, 1.7298, -0.3858

0.0000, NaN, NaN



46.2646, -2.4686, 2.5136

Same Dimension

The Same Dimension uses a secret algorithm to generate beautiful new colors.



79.0686, 20.8194, -12.7310



81.8380, 28.0841, -17.6213



78.2210, 16.4215, -0.7577



40.0393, 3.2867, -1.5125



36.8577, 72.4633, -48.6121



10.6308, 20.9005, -14.0211

Inverse Universe

The Inverse Universe completely reimagines the original color for something new.



79.0686, 20.8194, -12.7310



81.8380, 28.0841, -17.6213



88.5925, -23.4771, 10.6998



40.0393, 3.2867, -1.5125



36.8577, 72.4633, -48.6121



10.6308, 20.9005, -14.0211

Previews

White Background



This preview shows how the HunterLab color 79.0669, 20.8216, -12.7327 looks on a white background.

Color Contrast Check

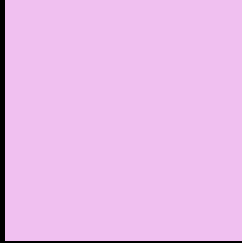
Large Text (above 18pt) WCAG AA × Fail

Any Text WCAG AA × Fail

Large Text (above 18pt) WCAG AAA × Fail

Any Text WCAG AAA × Fail

Black Background



This preview shows how the HunterLab color 79.0669, 20.8216, -12.7327 looks on a black background.

Color Contrast Check

Large Text (above 18pt) WCAG AA ✓ Pass

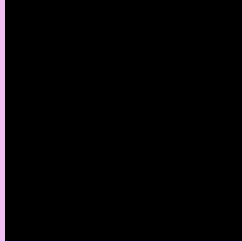
Any Text WCAG AA ✓ Pass

Large Text (above 18pt) WCAG AAA ✓ Pass

Any Text WCAG AAA ✓ Pass

If you want to check with other color combinations, try the [Color Contrast Checker](#).

HunterLab 79.0669, 20.8216, -12.7327 Background



This preview shows how black text looks on a background with the HunterLab color 79.0669, 20.8216, -12.7327.



This preview shows how white text looks on a background with the HunterLab color 79.0669, 20.8216, -12.7327.

-12.7327.

Color Blindness Simulation

Color vision deficiency is a very complex topic, and I could not describe the different causes any better than Wikipedia does, so if you want to learn more, you should check out their [article about color blindness](#).

Dichromacy



Original Color

79.0669, 20.8216, -12.7327

Protanopia

79.3649, 1.5879, -18.0209

Deuteranopia

79.0950, 6.0034, -11.7916



Tritanopia

79.0689, 11.6240, 2.2190

Trichromacy



Original Color

79.0669, 20.8216, -12.7327



Protanomaly

79.1033, 8.1584, -16.4644



Deuteranomaly

78.9355, 11.5760, -12.4951



Tritanomaly

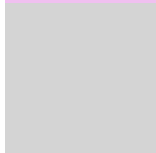
78.9358, 14.7847, -3.0089

Monochromacy



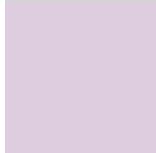
Original Color

79.0669, 20.8216, -12.7327



Achromatopsia

81.1403, -4.3294, 4.4085



Achromatomaly

80.2908, 4.3090, -1.4813

CSS Examples

Text

The CSS property to change the color of the text to HunterLab 79.0669, 20.8216, -12.7327 is called "color". The color property can be set on classes, ids or directly on the HTML element.

This example shows how text in the color `rgb(240, 192, 240)` looks like.

```
.text, #text, p{  
    color:rgb(240, 192, 240)  
}
```

If you want to add a text shadow in that color use the text-shadow property, you can generate a text shadow directly with our [CSS Text Shadow Generator](#).

Here you see how black text with a 4 pixel rgb(240, 192, 240) colored shadow looks like.

```
.shadow{ text-shadow: 4px 4px 2px rgb(240, 192, 240) }
```

Border

The CSS property to change the border of an element to HunterLab 79.0669, 20.8216, -12.7327 is called "border". The border property can be set on classes, ids or directly on the HTML element.

This example shows the color as border, it can be applied via the CSS property "border" or "border-color".

```
.border, #border, table{ border:4px solid rgb(240, 192, 240) }
```


If only the border color should be changed use the property `border-color`.

```
.border{ border-color:rgb(240, 192, 240) }
```

If you want to add a box shadow in that color use:

Here you see how a box with a 4 pixel `rgb(240, 192, 240)` colored shadow looks like.

```
.boxshadow{ -moz-box-shadow:4px 4px 4px  
4px rgb(240, 192, 240); -webkit-box-  
shadow:4px 4px 4px 4px rgb(240, 192, 240);  
box-shadow:4px 4px 4px 4px rgb(240, 192,  
240) }
```

Background

The CSS property to change the background color of an element to HunterLab 79.0669, 20.8216, -12.7327 is called "background". The background property can be set on classes, ids or directly on the HTML element.

```
.background, #background, body{  
background: rgb(240, 192, 240) }
```

If only the background color should be changed can be used:

```
.background{ background-color: rgb(240,  
192, 240) }
```

This example shows the color as background, it is applied via the CSS property "background".

To optimize and compress your CSS code, you can use our [online CSS compressor and optimizer](#) based on csstidy. If you want to create a linear or radial gradient as background or border, check our [CSS Gradient Generator](#).

Hey! You found this booklet interesting? Support Converting Colors with the new Membership Option!

The pro membership hides all ads, plus gives you double the colors in the color bucket, and more awesome pro features!

[Learn more, Memberships starting at \\$2.50/m!](#)

**Follow me
on Twitter!**

@ConvertingColor