

Converting Colors

HunterLab(79.0832, 6.3442,
8.7874)

Have a look what the booklet for
HunterLab(79.0832, 6.3442, 8.7874)
contains.

HunterLab(79.0832, 6.3442, 8.7874)	3
<i>Conversions</i>	4
<i>Details</i>	6
<i>Harmonies</i>	12
<i>Previews</i>	24
<i>Color Blindness Simulation</i>	28
<i>CSS Examples</i>	31

Color

**HunterLab(79.0832, 6.3442,
8.7874)**

Conversions

Conversions Part 1

Format	Color
Hex	E8C8C6
RGB	232, 200, 198
RGB Percent	91%, 78%, 78%
CMY	0.0902, 0.2157, 0.2235
CMYK	0.00, 0.14, 0.15, 0.09
HSL	4°, 43%, 84%
HSV	4°, 15%, 91%
XYZ	64.1260, 62.5415, 62.1179
YIQ	209.3400, 19.7140, 6.1620

Conversions

Conversions Part 2

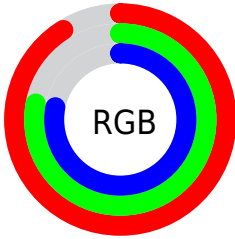
Format	Color
R _Y B	232, 200, 198
Decimal	15255750
CIE Lab	83.20, 10.94, 5.16
CIE LCh	83, 12.098, 25.254
Yxy	62.5443, 0.3397, 0.3313
Android (android.graphics.Color)	4293445830 (0xFFE8C8C6)
YUV	209.3400, -5.5906, 19.8728
Hunter-Lab	79.0832, 6.3442, 8.7874

Details

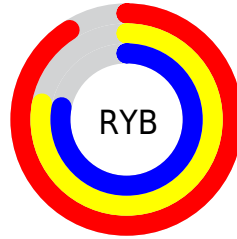
The HunterLab color $79.0832, 6.3442, 8.7874$ is a light color, and the websafe version is hex `FFCCCC`. A complement of this color would be $86.2693, -14.0991, 0.4429$, and the grayscale version is $80.0145, -4.2694, 4.3473$.

A 20% lighter version of the original color is $100.0000, -5.3358, 5.4332$, and $56.3928, 6.4556, 7.1209$ is the 20% darker color. If you saturate the color by 10%, you get $72.2170, 14.3898, 11.5381$, and if you desaturate by 10%, it is $86.3387, -1.3372, 6.1056$.

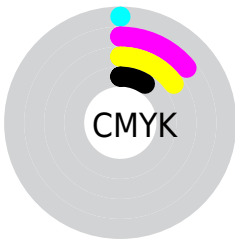
Distribution



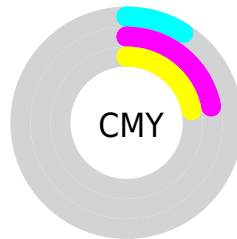
- Red (91%)
- Green (78%)
- Blue (78%)



- Red (91%)
- Yellow (78%)
- Blue (78%)



- Cyan (0%)
- Magenta (14%)
- Yellow (15%)
- Black (9%)



- Cyan (9%)
- Magenta (22%)
- Yellow (22%)

Brightness & Saturation Gradients

These gradients show how the HunterLab color 79.0832, 6.3442, 8.7874 changes by changing the brightness by 10 percent. The first figure shows a shift by +10% for each color and the second figure -10%.

Similar to the brightness gradients but the following saturation gradients show a change of the HunterLab color 79.0832, 6.3442, 8.7874 by changing the saturation by 10% instead.

79.0832, 6.3442,
8.7874

79.0832, 6.3442,
8.7874

208.3060, 3.2904,
17.6212

67.4334, 6.4459,
7.9080

104.1690, 5.9690,
10.6105

56.4180, 6.4881,
7.0467

117.5485, 5.7087,
11.5519

46.0778, 6.4611,
6.2039

131.4563, 5.4037,
12.5137

36.4601, 6.3556,
5.3777

145.8731, 5.0566,
13.4956

27.6241, 6.1591,
4.5647

160.7815, 4.6698,
14.4975

19.6461, 5.8538,
3.7587

176.1657, 4.2454,

12.6309, 5.4136,

15.5193

2.9469

192.0116, 3.7850,
16.5606

■ 5.9539, 7.6898,
3.9175

0.0000, NaN, NaN

■ 79.0832, 6.3442,
8.7874

■ 79.0832, 6.3442,
8.7874

■ 72.2170, 14.3898,
11.5381

■ 86.3387, -1.3372,
6.1056

■ 65.8037, 22.8057,
14.3360

■ 93.9230, -8.6753,
3.4926

■ 59.9300, 31.5283,
17.1393

■ 97.9265, -12.6259,
2.8401

■ 54.6974, 40.3904,
19.8658

■ 50.2201, 49.0631,
22.3797

■ 46.6125, 57.0236,
24.4920

■ 43.9638, 63.6054,
25.9958

■ 42.3008, 68.1920,
26.7537

■ 41.7868, 69.6826,
26.9687

Harmonies

Analogous

The Analogous color harmony consists of three colors that are next to each other on the color wheel.



79.0850, 7.4484, 3.4032



79.0832, 6.3442, 8.7874



79.0850, 2.3719, 12.6992

Triad

The Triadic color harmony groups three colors that are evenly spaced from another and form a triangle on the color wheel.



79.0850, 6.3418, 8.7887



79.0850, -13.3659, 10.2337



79.0850, -5.1640, -7.2705

Complementary

The Complementary color scheme is a pair of colors which are on the opposite of each other on the color wheel.



79.0832, 6.3442, 8.7874



86.2693, -14.0991, 0.4429

Split Complementary

Split-complementary colors differ from the complementary color scheme. The scheme consists of three colors, the original color and two neighbors of the complement color.



79.0850, -10.6106, -5.1243



79.0832, 6.3442, 8.7874



79.0850, -15.2564, 5.1959

Square

The Square scheme is like the rectangle color scheme, but the four colors are evenly spaced on the color wheel.



79.0850, 6.3418, 8.7887



79.0850, -9.0243, 13.4895



79.0850, -14.2627, -0.4580



79.0850, 0.6936, -6.1334

Rectangle

The Rectangle color scheme consists of four colors that form a rectangle on the color wheel.



79.0832, 6.3442, 8.7874



79.0850, -1.3044, 14.0812



79.0850, -14.2627, -0.4580



79.0850, -7.1019, -6.9049

Sweetspot

The Sweet Spot groups the original color and five complimentary colors.



79.0850, 6.3418, 8.7887



96.6376, -2.0175, 6.6100



79.5454, 12.9354, -6.7230



44.4194, -0.6416, 3.1611

0.0000, NaN, NaN



46.2646, -2.4686, 2.5136

Same Dimension

The Same Dimension uses a secret algorithm to generate beautiful new colors.



79.0850, 6.3418, 8.7887



85.3571, 10.0927, 10.8282



84.0862, -2.3575, 14.1005



38.0836, 1.0576, 3.3953



31.2294, 51.6006, 20.1468



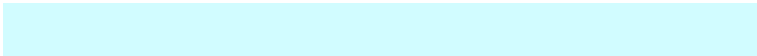
8.7697, 13.1057, 5.6333

Inverse Universe

The Inverse Universe completely reimagines the original color for something new.



86.2693, -14.0991, 0.4429



95.1818, -17.8977, -0.5952



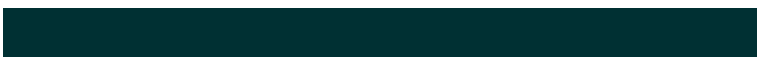
80.9767, -5.6472, -6.0997



40.2283, -5.0360, 0.9062



55.8851, -27.2593, -11.0065



15.3375, -7.5885, -2.7891

Previews

White Background



This preview shows how the HunterLab color 79.0832, 6.3442, 8.7874 looks on a white background.

Color Contrast Check

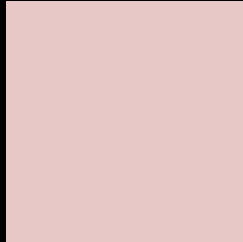
Large Text (above 18pt) WCAG AA × Fail

Any Text WCAG AA × Fail

Large Text (above 18pt) WCAG AAA × Fail

Any Text WCAG AAA × Fail

Black Background



This preview shows how the HunterLab color 79.0832, 6.3442, 8.7874 looks on a black background.

Color Contrast Check

Large Text (above 18pt) WCAG AA ✓ Pass

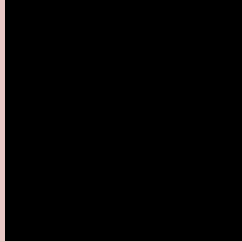
Any Text WCAG AA ✓ Pass

Large Text (above 18pt) WCAG AAA ✓ Pass

Any Text WCAG AAA ✓ Pass

If you want to check with other color combinations, try the [Color Contrast Checker](#).

HunterLab 79.0832, 6.3442, 8.7874 Background



This preview shows how black text looks on a background with the HunterLab color 79.0832, 6.3442, 8.7874.



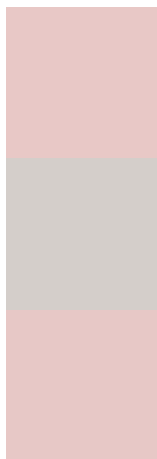
This preview shows how white text looks on a background with the HunterLab color 79.0832, 6.3442,

8.7874.

Color Blindness Simulation

Color vision deficiency is a very complex topic, and I could not describe the different causes any better than Wikipedia does, so if you want to learn more, you should check out their [article about color blindness](#).

Dichromacy



Original Color

79.0832, 6.3442, 8.7874

Protanopia

78.9962, -2.9306, 6.6876

Deuteranopia

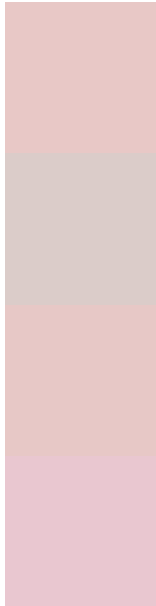
78.9777, 5.9908, 8.6626



Tritanopia

79.1737, 10.5522, 1.8298

Trichromacy



Original Color

79.0832, 6.3442, 8.7874

Protanomaly

79.0334, 0.2503, 7.2502

Deuteranomaly

78.9777, 5.9908, 8.6626

Tritanomaly

79.1988, 8.8309, 4.2829

Monochromacy



Original Color

79.0832, 6.3442, 8.7874

Achromatopsia

79.8497, -4.2606, 4.3384

Achromatomaly

79.5626, -0.7961, 5.9713

CSS Examples

Text

The CSS property to change the color of the text to HunterLab 79.0832, 6.3442, 8.7874 is called "color". The color property can be set on classes, ids or directly on the HTML element.

This example shows how text in the color `rgb(232, 200, 198)` looks like.

```
.text, #text, p{  
    color:rgb(232, 200, 198)  
}
```

If you want to add a text shadow in that color use the text-shadow property, you can generate a text shadow directly with our [CSS Text Shadow Generator](#).

Here you see how black text with a 4 pixel rgb(232, 200, 198) colored shadow looks like.

```
.shadow{ text-shadow: 4px 4px 2px rgb(232, 200, 198) }
```

Border

The CSS property to change the border of an element to HunterLab 79.0832, 6.3442, 8.7874 is called "border". The border property can be set on classes, ids or directly on the HTML element.

This example shows the color as border, it can be applied via the CSS property "border" or "border-color".

```
.border, #border, table{ border:4px solid rgb(232, 200, 198) }
```


If only the border color should be changed use the property `border-color`.

```
.border{ border-color:rgb(232, 200, 198) }
```

If you want to add a box shadow in that color use:

Here you see how a box with a 4 pixel `rgb(232, 200, 198)` colored shadow looks like.

```
.boxshadow{ -moz-box-shadow:4px 4px 4px  
4px rgb(232, 200, 198); -webkit-box-  
shadow:4px 4px 4px 4px rgb(232, 200, 198);  
box-shadow:4px 4px 4px 4px rgb(232, 200,  
198) }
```

Background

The CSS property to change the background color of an element to HunterLab 79.0832, 6.3442, 8.7874 is called "background". The background property can be set on classes, ids or directly on the HTML element.

```
.background, #background, body{  
background: rgb(232, 200, 198) }
```

If only the background color should be changed can be used:

```
.background{ background-color: rgb(232,  
200, 198) }
```

This example shows the color as background, it is applied via the CSS property "background".

To optimize and compress your CSS code, you can use our [online CSS compressor and optimizer](#) based on csstidy. If you want to create a linear or radial gradient as background or border, check our [CSS Gradient Generator](#).

Hey! You found this booklet interesting? Support Converting Colors with the new Membership Option!

The pro membership hides all ads, plus gives you double the colors in the color bucket, and more awesome pro features!

[Learn more, Memberships starting at \\$2.50/m!](#)

**Follow me
on Twitter!**

@ConvertingColor