

Converting Colors

HunterLab(79.0928, 1.5407,
11.8139)

Have a look what the booklet for
HunterLab(79.0928, 1.5407,
11.8139) contains.

HunterLab(79.1468, 1.6013, 11.8740)	3
<i>Conversions</i>	4
<i>Details</i>	6
<i>Harmonies</i>	12
<i>Previews</i>	24
<i>Color Blindness Simulation</i>	28
<i>CSS Examples</i>	31

Color

**HunterLab(79.1468, 1.6013,
11.8740)**

Conversions

Conversions Part 1

Format	Color
Hex	E2CBBF
RGB	226, 203, 191
RGB Percent	89%, 80%, 75%
CMY	0.1137, 0.2039, 0.2510
CMYK	0.00, 0.10, 0.15, 0.11
HSL	21°, 38%, 82%
HSV	21°, 15%, 89%
XYZ	62.1239, 62.6422, 58.1070
YIQ	208.5090, 17.5600, 1.1440

Conversions

Conversions Part 2

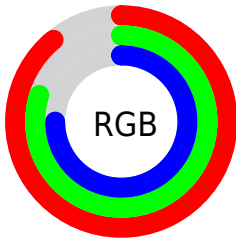
Format	Color
RYB	226, 209, 191
Decimal	14863295
CIELab	83.26, 6.10, 8.90
CIELCh	83, 10.792, 55.581
Yxy	62.6450, 0.3397, 0.3425
Android (android.graphics.Color)	4293053375 (0xFFE2CBBF)
YUV	208.5090, -8.6319, 15.3396
Hunter-Lab	79.1468, 1.6013, 11.8740

Details

The HunterLab color **79.1468, 1.6013, 11.8740** is a light color, and the websafe version is hex **CCCCCC**. A complement of this color would be **80.4108, -9.1718, -3.6648**, and the grayscale version is **79.6708, -4.2510, 4.3287**.

A 20% lighter version of the original color is **99.7474, -6.7215, 9.0414**, and **56.4588, 2.0916, 9.5757** is the 20% darker color. If you saturate the color by 10%, you get **74.1919, 6.0658, 16.0612**, and if you desaturate by 10%, it is **84.3035, -2.5252, 7.3484**.

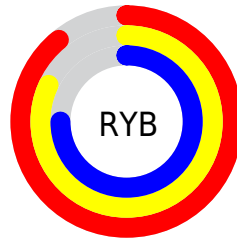
Distribution



Red (89%)

Green (80%)

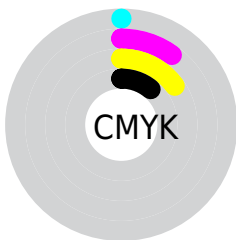
Blue (75%)



Red (89%)

Yellow (82%)

Blue (75%)

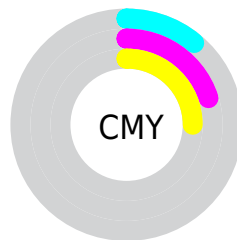


Cyan (0%)

Magenta (10%)

Yellow (15%)

Black (11%)



Cyan (11%)

Magenta (20%)

Yellow (25%)

Brightness & Saturation Gradients

These gradients show how the HunterLab color 79.1468, 1.6013, 11.8740 changes by changing the brightness by 10 percent. The first figure shows a shift by +10% for each color and the second figure -10%.

Similar to the brightness gradients but the following saturation gradients show a change of the HunterLab color 79.1468, 1.6013, 11.8740 by changing the saturation by 10% instead.

79.1468, 1.6013,
11.8740

79.1468, 1.6013,
11.8740

208.3938, -3.1394,
22.0575

67.4937, 1.9289,
10.8070

104.2387, 0.8037,
14.0422

56.4748, 2.2086,
9.7459

117.6211, 0.3447,
15.1441

46.1309, 2.4329,
8.6880

131.5316, -0.1521,
16.2595

36.5093, 2.5950,
7.6276

145.9511, -0.6846,
17.3892

27.6689, 2.6859,
6.5555

160.8620, -1.2510,
18.5335

19.6861, 2.6927,
5.4559

176.2488, -1.8498,

12.6654, 2.5953,

19.6929

4.2997

192.0971, -2.4797,
20.8675

■ 6.0031, 4.1073,
4.2022

0.0000, NaN, NaN

■ 79.1468, 1.6013,
11.8740

■ 79.1468, 1.6013,
11.8740

■ 74.1919, 6.0658,
16.0612

■ 84.3035, -2.5252,
7.3484

■ 69.4575, 10.9025,
19.8461

■ 89.6362, -6.3371,
2.5301

■ 64.9728, 16.1279,
23.1581

■ 94.9991, -10.5874,
-0.6931

■ 60.7696, 21.7444,
25.9142

■ 97.4212, -14.4265,
2.2002

■ 56.8830, 27.7276,
28.0236

■ 53.3513, 34.0113,
29.3973

■ 50.2130, 40.4716,
29.9678

■ 47.5031, 46.9116,
29.7268

■ 46.4207, 49.7115,
29.4745

Harmonies

Analogous

The Analogous color harmony consists of three colors that are next to each other on the color wheel.



79.1486, 5.1488, 8.3698



79.1468, 1.6013, 11.8740



79.1486, -3.4429, 13.3532

Triad

The Triadic color harmony groups three colors that are evenly spaced from another and form a triangle on the color wheel.



79.1486, 1.5989, 11.8752



79.1486, -14.1067, 5.0494



79.1486, 0.2085, -4.9165

Complementary

The Complementary color scheme is a pair of colors which are on the opposite of each other on the color wheel.



79.1468, 1.6013, 11.8740



80.4108, -9.1718, -3.6648

Split Complementary

Split-complementary colors differ from the complementary color scheme. The scheme consists of three colors, the original color and two neighbors of the complement color.



79.1486, -5.0088, -5.9488



79.1468, 1.6013, 11.8740



79.1486, -13.1865, 0.0194

Square

The Square scheme is like the rectangle color scheme, but the four colors are evenly spaced on the color wheel.



79.1486, 1.5989, 11.8752



79.1486, -12.4373, 9.5800



79.1486, -9.8899, -4.0884



79.1486, 4.3314, -1.3530

Rectangle

The Rectangle color scheme consists of four colors that form a rectangle on the color wheel.



79.1468, 1.6013, 11.8740



79.1486, -6.9386, 13.0658



79.1486, -9.8899, -4.0884



79.1486, -1.4792, -5.5806

Sweetspot

The Sweet Spot groups the original color and five complimentary colors.



79.1486, 1.5989, 11.8752



96.9417, -3.1010, 8.1828



76.3565, 11.7253, -2.3171



44.6527, -1.2861, 3.9615

0.0000, NaN, NaN



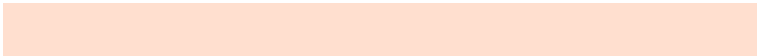
46.2646, -2.4686, 2.5136

Same Dimension

The Same Dimension uses a secret algorithm to generate beautiful new colors.



79.1486, 1.5989, 11.8752



88.6611, 3.6510, 15.4131



84.3830, -7.1989, 17.2371



38.0332, -0.4317, 4.2433



35.3447, 36.7646, 22.4229



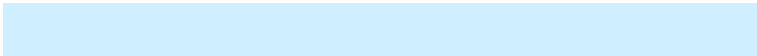
10.1415, 7.5064, 6.3806

Inverse Universe

The Inverse Universe completely reimagines the original color for something new.



80.4108, -9.1718, -3.6648



90.4394, -11.5390, -6.4964



75.1166, -0.4186, -10.5131



38.3918, -3.4881, -0.1680



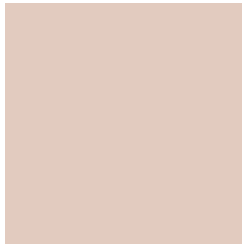
39.4107, -5.4180, -37.5640



11.1408, -2.5952, -8.3226

Previews

White Background



This preview shows how the HunterLab color 79.1468, 1.6013, 11.8740 looks on a white background.

Color Contrast Check

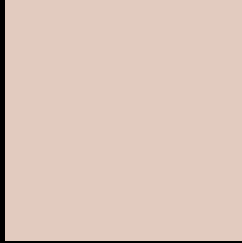
Large Text (above 18pt) WCAG AA × Fail

Any Text WCAG AA × Fail

Large Text (above 18pt) WCAG AAA × Fail

Any Text WCAG AAA × Fail

Black Background



This preview shows how the HunterLab color 79.1468, 1.6013, 11.8740 looks on a black background.

Color Contrast Check

Large Text (above 18pt) WCAG AA ✓ Pass

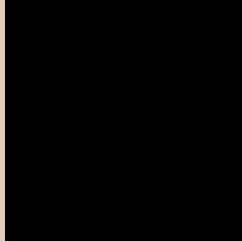
Any Text WCAG AA ✓ Pass

Large Text (above 18pt) WCAG AAA ✓ Pass

Any Text WCAG AAA ✓ Pass

If you want to check with other color combinations, try the [Color Contrast Checker](#).

HunterLab 79.1468, 1.6013, 11.8740 Background



This preview shows how black text looks on a background with the HunterLab color 79.1468, 1.6013, 11.8740.



This preview shows how white text looks on a background with the HunterLab color 79.1468, 1.6013,

Color Blindness Simulation

Color vision deficiency is a very complex topic, and I could not describe the different causes any better than Wikipedia does, so if you want to learn more, you should check out their [article about color blindness](#).

Dichromacy



Original Color

79.1468, 1.6013, 11.8740

Protanopia

79.3240, -3.8849, 11.1011

Deuteranopia

79.0177, 5.7814, 11.3728



Tritanopia

79.0007, 8.6196, 0.5812

Trichromacy



Original Color

79.1468, 1.6013, 11.8740

Protanomaly

79.3779, -2.1899, 11.6250

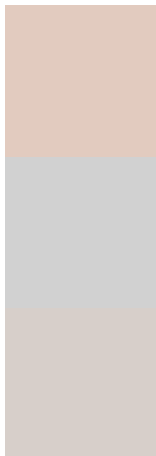
Deuteranomaly

78.9950, 4.1932, 11.3202

Tritanomaly

78.9042, 6.2251, 4.8522

Monochromacy



Original Color

79.1468, 1.6013, 11.8740

Achromatopsia

79.8497, -4.2606, 4.3384

Achromatomaly

79.5845, -2.4610, 7.3684

CSS Examples

Text

The CSS property to change the color of the text to HunterLab 79.1468, 1.6013, 11.8740 is called "color". The color property can be set on classes, ids or directly on the HTML element.

This example shows how text in the color `rgb(226, 203, 191)` looks like.

```
.text, #text, p{  
    color:rgb(226, 203, 191)  
}
```

If you want to add a text shadow in that color use the text-shadow property, you can generate a text shadow directly with our [CSS Text Shadow Generator](#).

Here you see how black text with a 4 pixel rgb(226, 203, 191) colored shadow looks like.

```
.shadow{ text-shadow: 4px 4px 2px rgb(226, 203, 191) }
```

Border

The CSS property to change the border of an element to HunterLab 79.1468, 1.6013, 11.8740 is called "border". The border property can be set on classes, ids or directly on the HTML element.

This example shows the color as border, it can be applied via the CSS property "border" or "border-color".

```
.border, #border, table{ border:4px solid rgb(226, 203, 191) }
```


If only the border color should be changed use the property border-color.

```
.border{ border-color:rgb(226, 203, 191) }
```

If you want to add a box shadow in that color use:

Here you see how a box with a 4 pixel rgb(226, 203, 191) colored shadow looks like.

```
.boxshadow{ -moz-box-shadow:4px 4px 4px  
4px rgb(226, 203, 191); -webkit-box-  
shadow:4px 4px 4px 4px rgb(226, 203, 191);  
box-shadow:4px 4px 4px 4px rgb(226, 203,  
191) }
```

Background

The CSS property to change the background color of an element to HunterLab 79.1468, 1.6013, 11.8740 is called "background". The background property can be set on classes, ids or directly on the HTML element.

```
.background, #background, body{  
background: rgb(226, 203, 191) }
```

If only the background color should be changed can be used:

```
.background{ background-color: rgb(226,  
203, 191) }
```

This example shows the color as background, it is applied via the CSS property "background".

To optimize and compress your CSS code, you can use our [online CSS compressor and optimizer](#) based on csstidy. If you want to create a linear or radial gradient as background or border, check our [CSS Gradient Generator](#).

Hey! You found this booklet interesting? Support Converting Colors with the new Membership Option!

The pro membership hides all ads, plus gives you double the colors in the color bucket, and more awesome pro features!

[Learn more, Memberships starting at \\$2.50/m!](#)

**Follow me
on Twitter!**

@ConvertingColor