

Converting Colors

HunterLab(79.1308, 3.0202,
12.3122)

Have a look what the booklet for
HunterLab(79.1308, 3.0202,
12.3122) contains.

HunterLab(79.1308, 3.0202, 12.3122)	3
<i>Conversions</i>	4
<i>Details</i>	6
<i>Harmonies</i>	12
<i>Previews</i>	24
<i>Color Blindness Simulation</i>	28
<i>CSS Examples</i>	31

Color

**HunterLab(79.1308, 3.0202,
12.3122)**

Conversions

Conversions Part 1

Format	Color
Hex	E5CABE
RGB	229, 202, 190
RGB Percent	90%, 79%, 75%
CMY	0.1020, 0.2078, 0.2549
CMYK	0.00, 0.12, 0.17, 0.10
HSL	18°, 43%, 82%
HSV	18°, 17%, 90%
XYZ	62.7279, 62.6168, 57.4954
YIQ	208.7050, 19.9440, 1.9920

Conversions

Conversions Part 2

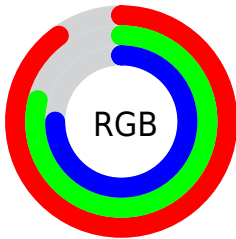
Format	Color
R _Y B	229, 207, 190
Decimal	15059646
CIE Lab	83.24, 7.56, 9.45
CIE LCh	83, 12.102, 51.344
Yxy	62.6196, 0.3431, 0.3425
Android (android.graphics.Color)	4293249726 (0xFFE5CABE)
YUV	208.7050, -9.2216, 17.7987
Hunter-Lab	79.1308, 3.0202, 12.3122

Details

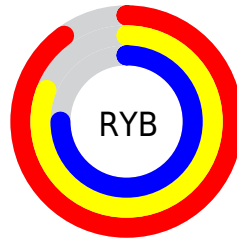
The HunterLab color **79.1308, 3.0202, 12.3122** is a light color, and the websafe version is hex **FFCCCC**. A complement of this color would be **81.3809, -10.3953, -4.0422**, and the grayscale version is **79.7568, -4.2556, 4.3333**.

A 20% lighter version of the original color is **99.7165, -6.8910, 9.4830**, and **56.4537, 3.4577, 9.9911** is the 20% darker color. If you saturate the color by 10%, you get **73.9153, 8.0313, 16.3220**, and if you desaturate by 10%, it is **84.5730, -1.6421, 7.9988**.

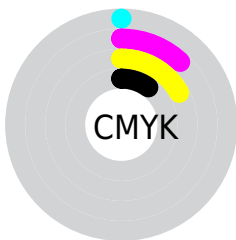
Distribution



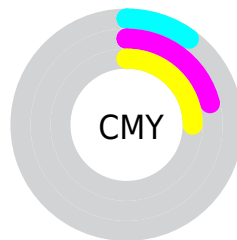
- Red (90%)
- Green (79%)
- Blue (75%)



- Red (90%)
- Yellow (81%)
- Blue (75%)



- Cyan (0%)
- Magenta (12%)
- Yellow (17%)
- Black (10%)




- Cyan (10%)
- Magenta (21%)
- Yellow (25%)

Brightness & Saturation Gradients


These gradients show how the HunterLab color 79.1308, 3.0202, 12.3122 changes by changing the brightness by 10 percent. The first figure shows a shift by +10% for each color and the second figure -10%.


Similar to the brightness gradients but the following saturation gradients show a change of the HunterLab color 79.1308, 3.0202, 12.3122 by changing the saturation by 10% instead.

 79.1308, 3.0202,
12.3122

 79.1308, 3.0202,
12.3122


208.3717, -1.2090,
22.6962

 67.4786, 3.2791,
11.2172


 104.2212, 2.3509,
14.5318

 56.4605, 3.4865,
10.1262


117.6028, 1.9521,
15.6576

 46.1175, 3.6341,
9.0360

131.5127, 1.5135,
16.7959

 36.4969, 3.7144,
7.9404

145.9315, 1.0372,
17.9475

 27.6576, 3.7172,
6.8291

160.8418, 0.5252,
19.1129

 19.6760, 3.6279,
5.6850

176.2279, -0.0208,

 12.6567, 3.4240,

20.2927

4.4777

192.0756, -0.5993,
21.4870

■ 5.9908, 5.1786,
4.1935

0.0000, NaN, NaN

■ 79.1308, 3.0202,
12.3122

■ 79.1308, 3.0202,
12.3122

■ 73.9153, 8.0313,
16.3220

■ 84.5730, -1.6421,
7.9988

■ 68.9500, 13.4243,
19.9633

■ 90.2122, -5.9796,
3.4273

■ 64.2702, 19.2099,
23.1623

■ 95.9042, -10.7213,
0.4195

■ 59.9143, 25.3785,
25.8298

■ 97.6720, -13.5316,
2.5182

■ 55.9256, 31.8822,
27.8664

■ 52.3503, 38.6172,
29.1737

■ 49.2346, 45.4050,
29.6778

■ 46.6172, 51.9770,
29.3869

■ 45.9343, 53.8137,
29.2466

Harmonies

Analogous

The Analogous color harmony consists of three colors that are next to each other on the color wheel.



79.1326, 6.6691, 8.1521



79.1308, 3.0202, 12.3122



79.1326, -2.5043, 14.2919

Triad

The Triadic color harmony groups three colors that are evenly spaced from another and form a triangle on the color wheel.



79.1326, 3.0178, 12.3134



79.1326, -15.1797, 5.9214



79.1326, -0.0362, -6.4686

Complementary

The Complementary color scheme is a pair of colors which are on the opposite of each other on the color wheel.



79.1308, 3.0202, 12.3122



81.3809, -10.3953, -4.0422

Split Complementary

Split-complementary colors differ from the complementary color scheme. The scheme consists of three colors, the original color and two neighbors of the complement color.



79.1326, -5.9342, -7.1758



79.1308, 3.0202, 12.3122



79.1326, -14.5628, 0.2596

Square

The Square scheme is like the rectangle color scheme, but the four colors are evenly spaced on the color wheel.



79.1326, 3.0178, 12.3134



79.1326, -12.9300, 10.7836



79.1326, -11.2193, -4.6337



79.1326, 4.8701, -2.7671

Rectangle

The Rectangle color scheme consists of four colors that form a rectangle on the color wheel.



79.1308, 3.0202, 12.3122



79.1326, -6.4556, 14.2154



79.1326, -11.2193, -4.6337



79.1326, -1.9726, -7.0747

Sweetspot

The Sweet Spot groups the original color and five complimentary colors.



79.1326, 3.0178, 12.3134



96.8006, -2.8633, 8.0249



76.4926, 13.8305, -3.6652



44.5784, -1.1607, 3.8786

0.0000, NaN, NaN



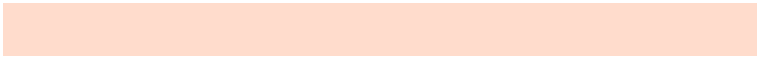
46.2646, -2.4686, 2.5136

Same Dimension

The Same Dimension uses a secret algorithm to generate beautiful new colors.



79.1326, 3.0178, 12.3134



87.5486, 5.1142, 15.3490



84.9676, -6.8530, 18.2428



38.8432, -0.2530, 4.2333



35.0017, 39.9186, 22.2667



10.3223, 8.6718, 6.5124

Inverse Universe

The Inverse Universe completely reimagines the original color for something new.



81.3809, -10.3953, -4.0422



90.5358, -12.7234, -6.3916



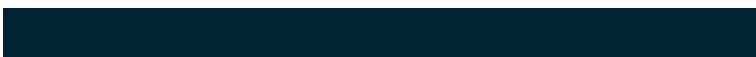
75.4334, -0.6128, -11.7939



39.4315, -3.7574, -0.0432



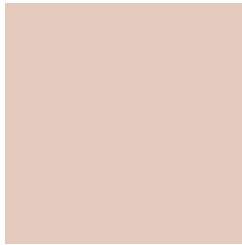
41.8796, -8.3397, -34.3428



12.0786, -3.2930, -7.9887

Previews

White Background



This preview shows how the HunterLab color 79.1308, 3.0202, 12.3122 looks on a white background.

Color Contrast Check

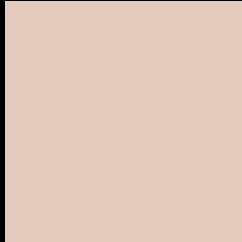
Large Text (above 18pt) WCAG AA × Fail

Any Text WCAG AA × Fail

Large Text (above 18pt) WCAG AAA × Fail

Any Text WCAG AAA × Fail

Black Background



This preview shows how the HunterLab color 79.1308, 3.0202, 12.3122 looks on a black background.

Color Contrast Check

Large Text (above 18pt) WCAG AA ✓ Pass

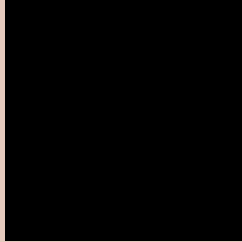
Any Text WCAG AA ✓ Pass

Large Text (above 18pt) WCAG AAA ✓ Pass

Any Text WCAG AAA ✓ Pass

If you want to check with other color combinations, try the [Color Contrast Checker](#).

HunterLab 79.1308, 3.0202, 12.3122 Background



This preview shows how black text looks on a background with the HunterLab color 79.1308, 3.0202, 12.3122.



This preview shows how white text looks on a background with the HunterLab color 79.1308, 3.0202,

Color Blindness Simulation

Color vision deficiency is a very complex topic, and I could not describe the different causes any better than Wikipedia does, so if you want to learn more, you should check out their [article about color blindness](#).

Dichromacy



Original Color

79.1308, 3.0202, 12.3122

Protanopia

79.3240, -3.8849, 11.1011

Deuteranopia

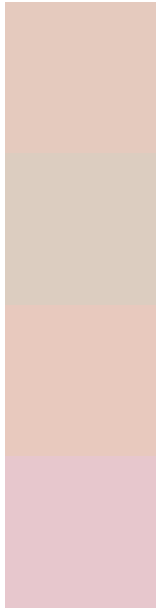
79.0688, 5.8411, 12.2948



Tritanopia

78.9930, 10.0215, 1.1004

Trichromacy



Original Color

79.1308, 3.0202, 12.3122

Protanomaly

79.1733, -1.3392, 11.4175

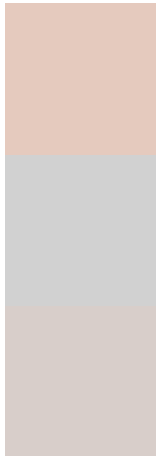
Deuteranomaly

79.1497, 4.6033, 12.3604

Tritanomaly

78.8946, 7.6355, 5.3428

Monochromacy



Original Color

79.1308, 3.0202, 12.3122

Achromatopsia

79.8497, -4.2606, 4.3384

Achromatomaly

79.3762, -1.6181, 7.1455

CSS Examples

Text

The CSS property to change the color of the text to HunterLab 79.1308, 3.0202, 12.3122 is called "color". The color property can be set on classes, ids or directly on the HTML element.

This example shows how text in the color `rgb(229, 202, 190)` looks like.

```
.text, #text, p{  
    color:rgb(229, 202, 190)  
}
```

If you want to add a text shadow in that color use the text-shadow property, you can generate a text shadow directly with our [CSS Text Shadow Generator](#).

Here you see how black text with a 4 pixel rgb(229, 202, 190) colored shadow looks like.

```
.shadow{ text-shadow: 4px 4px 2px rgb(229, 202, 190) }
```

Border

The CSS property to change the border of an element to HunterLab 79.1308, 3.0202, 12.3122 is called "border". The border property can be set on classes, ids or directly on the HTML element.

This example shows the color as border, it can be applied via the CSS property "border" or "border-color".

```
.border, #border, table{ border:4px solid rgb(229, 202, 190) }
```


If only the border color should be changed use the property `border-color`.

```
.border{ border-color:rgb(229, 202, 190) }
```

If you want to add a box shadow in that color use:

Here you see how a box with a 4 pixel `rgb(229, 202, 190)` colored shadow looks like.

```
.boxshadow{ -moz-box-shadow:4px 4px 4px  
4px rgb(229, 202, 190); -webkit-box-  
shadow:4px 4px 4px 4px rgb(229, 202, 190);  
box-shadow:4px 4px 4px 4px rgb(229, 202,  
190) }
```

Background

The CSS property to change the background color of an element to HunterLab 79.1308, 3.0202, 12.3122 is called "background". The background property can be set on classes, ids or directly on the HTML element.

```
.background, #background, body{  
background: rgb(229, 202, 190) }
```

If only the background color should be changed can be used:

```
.background{ background-color: rgb(229,  
202, 190) }
```

This example shows the color as background, it is applied via the CSS property "background".

To optimize and compress your CSS code, you can use our [online CSS compressor and optimizer](#) based on csstidy. If you want to create a linear or radial gradient as background or border, check our [CSS Gradient Generator](#).

Hey! You found this booklet interesting? Support Converting Colors with the new Membership Option!

The pro membership hides all ads, plus gives you double the colors in the color bucket, and more awesome pro features!

[Learn more, Memberships starting at \\$2.50/m!](#)

**Follow me
on Twitter!**

@ConvertingColor