

Converting Colors

HunterLab(79.1670, 3.8332,
7.0017)

Have a look what the booklet for
HunterLab(79.1670, 3.8332, 7.0017)
contains.

HunterLab(79.1670, 3.8332, 7.0017)	3
<i>Conversions</i>	4
<i>Details</i>	6
<i>Harmonies</i>	12
<i>Previews</i>	24
<i>Color Blindness Simulation</i>	28
<i>CSS Examples</i>	31

Color

**HunterLab(79.1670, 3.8332,
7.0017)**

Conversions

Conversions Part 1

Format	Color
Hex	E2CACA
RGB	226, 202, 202
RGB Percent	89%, 79%, 79%
CMY	0.1137, 0.2078, 0.2078
CMYK	0.00, 0.11, 0.11, 0.11
HSL	0°, 29%, 84%
HSV	0°, 11%, 89%
XYZ	63.1453, 62.6741, 64.6464
YIQ	209.1760, 14.3040, 5.0880

Conversions

Conversions Part 2

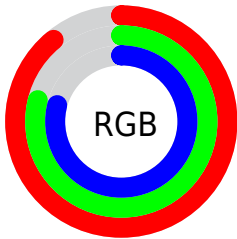
Format	Color
R _Y B	226, 202, 202
Decimal	14863050
CIE Lab	83.27, 8.39, 3.06
CIE LCh	83, 8.934, 20.040
Yxy	62.6769, 0.3315, 0.3291
Android (android.graphics.Color)	4293053130 (0xFFE2CACA)
YUV	209.1760, -3.5378, 14.7546
Hunter-Lab	79.1670, 3.8332, 7.0017

Details

The HunterLab color $79.1670, 3.8332, 7.0017$ is a light color, and the websafe version is hex `CCCCCC`. A complement of this color would be $85.1111, -12.0338, 2.1111$, and the grayscale version is $79.9372, -4.2652, 4.3431$.

A 20% lighter version of the original color is $100.0000, -5.3358, 5.4332$, and $56.5472, 4.3591, 5.5445$ is the 20% darker color. If you saturate the color by 10%, you get $72.0030, 12.1876, 9.2879$, and if you desaturate by 10%, it is $86.7288, -4.1690, 4.8660$.

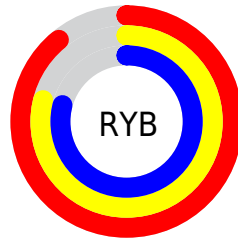
Distribution



Red (89%)

Green (79%)

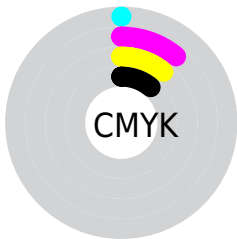
Blue (79%)



Red (89%)

Yellow (79%)

Blue (79%)

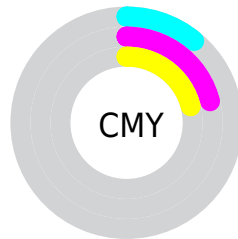


Cyan (0%)

Magenta (11%)

Yellow (11%)

Black (11%)



Cyan (11%)

Magenta (21%)

Yellow (21%)

Brightness & Saturation Gradients

These gradients show how the HunterLab color 79.1670, 3.8332, 7.0017 changes by changing the brightness by 10 percent. The first figure shows a shift by +10% for each color and the second figure -10%.

Similar to the brightness gradients but the following saturation gradients show a change of the HunterLab color 79.1670, 3.8332, 7.0017 by changing the saturation by 10% instead.

■ 79.1670, 3.8332,
7.0017

■ 79.1670, 3.8332,
7.0017

208.4217, -0.1064,
15.0962

■ 67.5129, 4.0535,
6.2241

104.2609, 3.2365,
8.6366

■ 56.4929, 4.2201,
5.4712

117.6441, 2.8719,
9.4903

■ 46.1477, 4.3246,
4.7446

131.5556, 2.4662,
10.3679

■ 36.5248, 4.3589,
4.0443

145.9758, 2.0217,
11.2688

■ 27.6831, 4.3124,
3.3701

160.8876, 1.5405,
12.1926

■ 19.6988, 4.1694,
2.7203

176.2751, 1.0244,

■ 12.6763, 3.9064,

13.1387

2.0907

192.1242, 0.4750,
14.1067

■ 6.0186, 5.7548,
2.4360

0.0000, NaN, NaN

■ 79.1670, 3.8332,
7.0017

■ 79.1670, 3.8332,
7.0017

■ 72.0030, 12.1876,
9.2879

■ 86.7288, -4.1690,
4.8660

■ 65.3047, 20.9037,
11.7267

■ 94.6254, -11.8437,
2.8621

■ 59.1657, 29.9194,
14.3059

■ 97.4212, -14.4264,
2.2002

■ 53.6978, 39.0589,
16.9747

■ 49.0294, 47.9637,
19.6220

■ 45.2919, 56.0487,
22.0612

■ 42.5888, 62.5638,
24.0482

■ 40.9497, 66.8414,
25.3618

■ 40.2116, 68.8585,
25.9837

Harmonies

Analogous

The Analogous color harmony consists of three colors that are next to each other on the color wheel.



79.1688, 4.2290, 2.9127



79.1670, 3.8332, 7.0017



79.1688, 1.2474, 10.2013

Triad

The Triadic color harmony groups three colors that are evenly spaced from another and form a triangle on the color wheel.



79.1688, 3.8309, 7.0030



79.1688, -10.5742, 9.2788



79.1688, -5.6783, -3.9850

Complementary

The Complementary color scheme is a pair of colors which are on the opposite of each other on the color wheel.



79.1670, 3.8332, 7.0017



85.1111, -12.0338, 2.1111

Split Complementary

Split-complementary colors differ from the complementary color scheme. The scheme consists of three colors, the original color and two neighbors of the complement color.



79.1688, -9.5595, -2.0734



79.1670, 3.8332, 7.0017



79.1688, -12.3452, 5.6811

Square

The Square scheme is like the rectangle color scheme, but the four colors are evenly spaced on the color wheel.



79.1688, 3.8309, 7.0030



79.1688, -7.0908, 11.4650



79.1688, -11.9779, 1.5176



79.1688, -1.3250, -3.5836

Rectangle

The Rectangle color scheme consists of four colors that form a rectangle on the color wheel.



79.1670, 3.8332, 7.0017



79.1688, -1.3362, 11.4685



79.1688, -11.9779, 1.5176



79.1688, -7.0799, -3.5878

Sweetspot

The Sweet Spot groups the original color and five complimentary colors.



79.1688, 3.8309, 7.0030



97.3312, -2.6138, 6.1534



79.9386, 7.9585, -3.9695



44.7027, -0.8699, 2.9370

0.0000, NaN, NaN



46.2646, -2.4686, 2.5136

Same Dimension

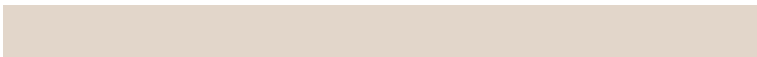
The Same Dimension uses a secret algorithm to generate beautiful new colors.



79.1688, 3.8309, 7.0030



88.7083, 6.7186, 8.6605



82.7811, -2.3962, 10.9460



37.0147, 1.3272, 3.1186



30.3725, 52.0086, 19.6259



7.9972, 13.6899, 5.1675

Inverse Universe

The Inverse Universe completely reimagines the original color for something new.



85.1111, -12.0338, 2.1111



97.0786, -15.6439, 1.7645



81.3275, -5.9538, -2.4458



39.4614, -5.2029, 1.1051



58.4401, -30.9759, -6.1771



15.3863, -8.1557, -1.6257

Previews

White Background



This preview shows how the HunterLab color 79.1670, 3.8332, 7.0017 looks on a white background.

Color Contrast Check

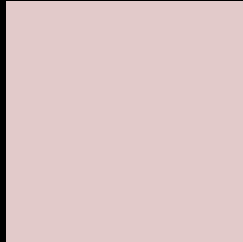
Large Text (above 18pt) WCAG AA × Fail

Any Text WCAG AA × Fail

Large Text (above 18pt) WCAG AAA × Fail

Any Text WCAG AAA × Fail

Black Background



This preview shows how the HunterLab color 79.1670, 3.8332, 7.0017 looks on a black background.

Color Contrast Check

Large Text (above 18pt) WCAG AA ✓ Pass

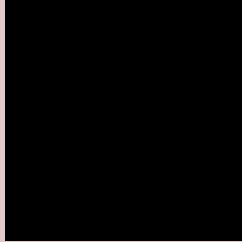
Any Text WCAG AA ✓ Pass

Large Text (above 18pt) WCAG AAA ✓ Pass

Any Text WCAG AAA ✓ Pass

If you want to check with other color combinations, try the [Color Contrast Checker](#).

HunterLab 79.1670, 3.8332, 7.0017 Background



This preview shows how black text looks on a background with the HunterLab color 79.1670, 3.8332, 7.0017.



This preview shows how white text looks on a background with the HunterLab color 79.1670, 3.8332,

Color Blindness Simulation

Color vision deficiency is a very complex topic, and I could not describe the different causes any better than Wikipedia does, so if you want to learn more, you should check out their [article about color blindness](#).

Dichromacy



Original Color

79.1670, 3.8332, 7.0017

Protanopia

79.3917, -2.9474, 5.7356

Deuteranopia

79.1805, 5.3973, 7.0446



Tritanopia

79.2215, 7.9178, 0.3336

Trichromacy



Original Color

79.1670, 3.8332, 7.0017

Protanomaly

79.2300, -0.4448, 6.0639

Deuteranomaly

79.0769, 5.0491, 6.9198

Tritanomaly

79.2511, 6.1877, 2.8368

Monochromacy



Original Color

79.1670, 3.8332, 7.0017

Achromatopsia

79.8497, -4.2606, 4.3384

Achromatomaly

79.4015, -1.2893, 5.3019

CSS Examples

Text

The CSS property to change the color of the text to HunterLab 79.1670, 3.8332, 7.0017 is called "color". The color property can be set on classes, ids or directly on the HTML element.

This example shows how text in the color `rgb(226, 202, 202)` looks like.

```
.text, #text, p{  
    color:rgb(226, 202, 202)  
}
```

If you want to add a text shadow in that color use the text-shadow property, you can generate a text shadow directly with our [CSS Text Shadow Generator](#).

Here you see how black text with a 4 pixel rgb(226, 202, 202) colored shadow looks like.

```
.shadow{ text-shadow: 4px 4px 2px rgb(226, 202, 202) }
```

Border

The CSS property to change the border of an element to HunterLab 79.1670, 3.8332, 7.0017 is called "border".

The border property can be set on classes, ids or directly on the HTML element.

This example shows the color as border, it can be applied via the CSS property "border" or "border-color".

```
.border, #border, table{ border:4px solid rgb(226, 202, 202) }
```


If only the border color should be changed use the property `border-color`.

```
.border{ border-color:rgb(226, 202, 202) }
```

If you want to add a box shadow in that color use:

Here you see how a box with a 4 pixel `rgb(226, 202, 202)` colored shadow looks like.

```
.boxshadow{ -moz-box-shadow:4px 4px 4px  
4px rgb(226, 202, 202); -webkit-box-  
shadow:4px 4px 4px 4px rgb(226, 202, 202);  
box-shadow:4px 4px 4px 4px rgb(226, 202,  
202) }
```

Background

The CSS property to change the background color of an element to HunterLab 79.1670, 3.8332, 7.0017 is called "background". The background property can be set on classes, ids or directly on the HTML element.

```
.background, #background, body{  
background: rgb(226, 202, 202) }
```

If only the background color should be changed can be used:

```
.background{ background-color: rgb(226,  
202, 202) }
```

This example shows the color as background, it is applied via the CSS property "background".

To optimize and compress your CSS code, you can use our [online CSS compressor and optimizer](#) based on csstidy. If you want to create a linear or radial gradient as background or border, check our [CSS Gradient Generator](#).

Hey! You found this booklet interesting? Support Converting Colors with the new Membership Option!

The pro membership hides all ads, plus gives you double the colors in the color bucket, and more awesome pro features!

[Learn more, Memberships starting at \\$2.50/m!](#)

**Follow me
on Twitter!**

@ConvertingColor