

Converting Colors

HunterLab(79.2306, 0.9242,
7.4867)

Have a look what the booklet for
HunterLab(79.2306, 0.9242, 7.4867)
contains.

HunterLab(79.2306, 0.9242, 7.4867)	3
<i>Conversions</i>	4
<i>Details</i>	6
<i>Harmonies</i>	12
<i>Previews</i>	24
<i>Color Blindness Simulation</i>	28
<i>CSS Examples</i>	31

Color

**HunterLab(79.2306, 0.9242,
7.4867)**

Conversions

Conversions Part 1

Format	Color
Hex	DDCCC9
RGB	221, 204, 201
RGB Percent	87%, 80%, 79%
CMY	0.1333, 0.2000, 0.2118
CMYK	0.00, 0.08, 0.09, 0.13
HSL	9°, 23%, 83%
HSV	9°, 9%, 87%
XYZ	61.9542, 62.7749, 64.1097
YIQ	208.7410, 11.0950, 2.6710

Conversions

Conversions Part 2

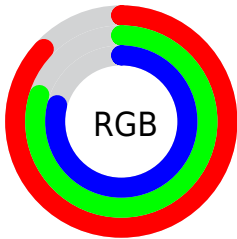
Format	Color
R_{YB}	221, 205, 201
Decimal	14535881
CIE Lab	83.33, 5.40, 3.62
CIE LCh	83, 6.503, 33.818
Yxy	62.7776, 0.3281, 0.3324
Android (android.graphics.Color)	4292725961 (0xFFDDCCC9)
YUV	208.7410, -3.8163, 10.7511
Hunter-Lab	79.2306, 0.9242, 7.4867

Details

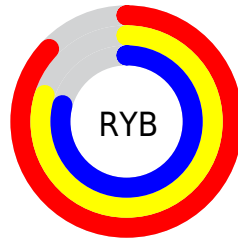
The HunterLab color $79.2306, 0.9242, 7.4867$ is a light color, and the websafe version is hex `CCCCCC`. A complement of this color would be $82.3283, -9.1947, 1.3048$, and the grayscale version is $79.7524, -4.2554, 4.3331$.

A 20% lighter version of the original color is $100.0000, -5.3358, 5.4332$, and $56.5918, 1.5783, 5.9793$ is the 20% darker color. If you saturate the color by 10%, you get $73.0855, 7.2640, 10.6069$, and if you desaturate by 10%, it is $85.6543, -5.0961, 4.3169$.

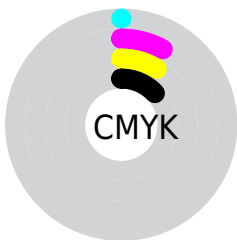
Distribution



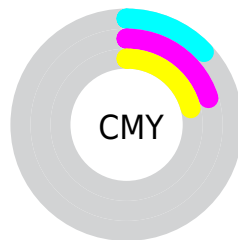
- Red (87%)
- Green (80%)
- Blue (79%)



- Red (87%)
- Yellow (80%)
- Blue (79%)



- Cyan (0%)
- Magenta (8%)
- Yellow (9%)
- Black (13%)



- Cyan (13%)
- Magenta (20%)
- Yellow (21%)

Brightness & Saturation Gradients

These gradients show how the HunterLab color 79.2306, 0.9242, 7.4867 changes by changing the brightness by 10 percent. The first figure shows a shift by +10% for each color and the second figure -10%.

Similar to the brightness gradients but the following saturation gradients show a change of the HunterLab color 79.2306, 0.9242, 7.4867 by changing the saturation by 10% instead.

■ 79.2306, 0.9242,
7.4867

■ 79.2306, 0.9242,
7.4867

208.5095, -4.0635,
15.7779

■ 67.5732, 1.2853,
6.6821

104.3306, 0.0647,
9.1716

■ 56.5497, 1.6001,
5.9005

117.7167, -0.4235,
10.0486

■ 46.2009, 1.8616,
5.1431

131.6309, -0.9484,
10.9486

■ 36.5740, 2.0635,
4.4097

146.0538, -1.5081,
11.8710

■ 27.7279, 2.1975,
3.6989

160.9681, -2.1008,
12.8156

■ 19.7388, 2.2513,
3.0081

176.3582, -2.7251,

■ 12.7109, 2.2064,

13.7819

2.3310

192.2096, -3.3797,
14.7694

6.0673, 3.5563,
2.8030

0.0000, NaN, NaN

79.2306, 0.9242,
7.4867

79.2306, 0.9242,
7.4867

73.0855, 7.2640,
10.6069

85.6543, -5.0961,
4.3169

67.2561, 13.9549,
13.6455

92.3168, -10.8244,
1.1108

61.7960, 20.9989,
16.5596

97.0115, -15.8936,
1.6789

56.7672, 28.3590,
19.2818

■ 52.2425, 35.9277,
21.7156

■ 48.3029, 43.4919,
23.7336

■ 45.0298, 50.7056,
25.1904

■ 42.4913, 57.1023,
25.9615

■ 40.7157, 62.1586,
26.0892

Harmonies

Analogous

The Analogous color harmony consists of three colors that are next to each other on the color wheel.



79.2323, 1.9734, 4.6998



79.2306, 0.9242, 7.4867



79.2323, -1.5108, 9.3660

Triad

The Triadic color harmony groups three colors that are evenly spaced from another and form a triangle on the color wheel.



79.2323, 0.9220, 7.4880



79.2323, -9.6546, 6.8412



79.2323, -3.8236, -1.7247

Complementary

The Complementary color scheme is a pair of colors which are on the opposite of each other on the color wheel.



79.2306, 0.9242, 7.4867



82.3283, -9.1947, 1.3048

Split Complementary

Split-complementary colors differ from the complementary color scheme. The scheme consists of three colors, the original color and two neighbors of the complement color.



79.2323, -6.9167, -1.0968



79.2306, 0.9242, 7.4867



79.2323, -10.2519, 3.9239

Square

The Square scheme is like the rectangle color scheme, but the four colors are evenly spaced on the color wheel.



79.2323, 0.9220, 7.4880



79.2323, -7.6125, 9.0031



79.2323, -9.2573, 1.0006



79.2323, -0.7936, -0.6829

Rectangle

The Rectangle color scheme consists of four colors that form a rectangle on the color wheel.



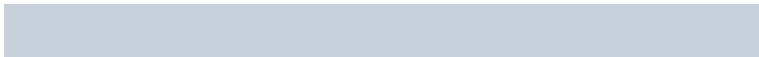
79.2306, 0.9242, 7.4867



79.2323, -3.5711, 9.8903



79.2323, -9.2573, 1.0006



79.2323, -4.8905, -1.7021

Sweetspot

The Sweet Spot groups the original color and five complimentary colors.



79.2323, 0.9220, 7.4880



97.6929, -3.2233, 6.5647



78.8722, 5.3695, -1.1673



44.9141, -1.2275, 3.1767

0.0000, NaN, NaN



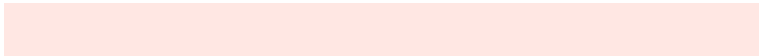
46.2646, -2.4686, 2.5136

Same Dimension

The Same Dimension uses a secret algorithm to generate beautiful new colors.



79.2323, 0.9220, 7.4880



91.6768, 2.5727, 9.5596



82.2697, -4.2250, 10.7962



36.5590, 0.5352, 3.5207



31.0977, 47.1339, 19.9874



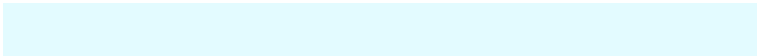
8.5333, 10.1063, 5.4351

Inverse Universe

The Inverse Universe completely reimagines the original color for something new.



82.3283, -9.1947, 1.3048



96.1271, -11.9749, 0.6705



79.2153, -4.1122, -2.4605



38.0511, -4.3412, 0.5405



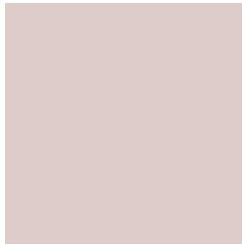
49.0010, -19.9239, -18.2371



12.8371, -5.5440, -4.0774

Previews

White Background



This preview shows how the HunterLab color 79.2306, 0.9242, 7.4867 looks on a white background.

Color Contrast Check

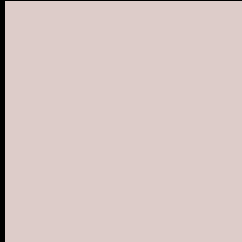
Large Text (above 18pt) WCAG AA × Fail

Any Text WCAG AA × Fail

Large Text (above 18pt) WCAG AAA × Fail

Any Text WCAG AAA × Fail

Black Background



This preview shows how the HunterLab color 79.2306, 0.9242, 7.4867 looks on a black background.

Color Contrast Check

Large Text (above 18pt) WCAG AA ✓ Pass

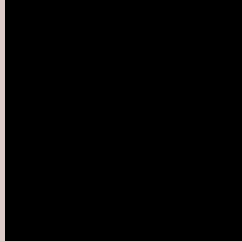
Any Text WCAG AA ✓ Pass

Large Text (above 18pt) WCAG AAA ✓ Pass

Any Text WCAG AAA ✓ Pass

If you want to check with other color combinations, try the [Color Contrast Checker](#).

HunterLab 79.2306, 0.9242, 7.4867 Background



This preview shows how black text looks on a background with the HunterLab color 79.2306, 0.9242, 7.4867.



This preview shows how white text looks on a background with the HunterLab color 79.2306, 0.9242,

7.4867.

Color Blindness Simulation

Color vision deficiency is a very complex topic, and I could not describe the different causes any better than Wikipedia does, so if you want to learn more, you should check out their [article about color blindness](#).

Dichromacy



Original Color

79.2306, 0.9242, 7.4867

Protanopia

79.3313, -3.2779, 6.5997

Deuteranopia

79.2846, 5.7465, 7.1699



Tritanopia

79.0386, 5.8636, -0.4375

Trichromacy



Original Color

79.2306, 0.9242, 7.4867

Protanomaly

79.2805, -1.9480, 7.0304

Deuteranomaly

79.2693, 4.1785, 7.1249

Tritanomaly

79.0404, 3.9606, 2.5451

Monochromacy



Original Color

79.2306, 0.9242, 7.4867

Achromatopsia

79.8497, -4.2606, 4.3384

Achromatomaly

79.5160, -2.4565, 5.4149

CSS Examples

Text

The CSS property to change the color of the text to HunterLab 79.2306, 0.9242, 7.4867 is called "color". The color property can be set on classes, ids or directly on the HTML element.

This example shows how text in the color `rgb(221, 204, 201)` looks like.

```
.text, #text, p{  
    color:rgb(221, 204, 201)  
}
```

If you want to add a text shadow in that color use the text-shadow property, you can generate a text shadow directly with our [CSS Text Shadow Generator](#).

Here you see how black text with a 4 pixel rgb(221, 204, 201) colored shadow looks like.

```
.shadow{ text-shadow: 4px 4px 2px rgb(221, 204, 201) }
```

Border

The CSS property to change the border of an element to HunterLab 79.2306, 0.9242, 7.4867 is called "border".

The border property can be set on classes, ids or directly on the HTML element.

This example shows the color as border, it can be applied via the CSS property "border" or "border-color".

```
.border, #border, table{ border:4px solid rgb(221, 204, 201) }
```


If only the border color should be changed use the property border-color.

```
.border{ border-color:rgb(221, 204, 201) }
```

If you want to add a box shadow in that color use:

Here you see how a box with a 4 pixel rgb(221, 204, 201) colored shadow looks like.

```
.boxshadow{ -moz-box-shadow:4px 4px 4px  
4px rgb(221, 204, 201); -webkit-box-  
shadow:4px 4px 4px 4px rgb(221, 204, 201);  
box-shadow:4px 4px 4px 4px rgb(221, 204,  
201) }
```

Background

The CSS property to change the background color of an element to HunterLab 79.2306, 0.9242, 7.4867 is called "background". The background property can be set on classes, ids or directly on the HTML element.

```
.background, #background, body{  
background: rgb(221, 204, 201) }
```

If only the background color should be changed can be used:

```
.background{ background-color: rgb(221,  
204, 201) }
```

This example shows the color as background, it is applied via the CSS property "background".

To optimize and compress your CSS code, you can use our [online CSS compressor and optimizer](#) based on csstidy. If you want to create a linear or radial gradient as background or border, check our [CSS Gradient Generator](#).

Hey! You found this booklet interesting? Support Converting Colors with the new Membership Option!

The pro membership hides all ads, plus gives you double the colors in the color bucket, and more awesome pro features!

[Learn more, Memberships starting at \\$2.50/m!](#)

**Follow me
on Twitter!**

@ConvertingColor