

Converting Colors

HunterLab(79.3790, -0.7913,
8.9426)

Have a look what the booklet for
HunterLab(79.3790, -0.7913, 8.9426)
contains.

HunterLab(79.2464, -0.7451, 8.8463)	3
<i>Conversions</i>	4
<i>Details</i>	6
<i>Harmonies</i>	12
<i>Previews</i>	24
<i>Color Blindness Simulation</i>	28
<i>CSS Examples</i>	31

Color

**HunterLab(79.2464, -0.7451,
8.8463)**

Conversions

Conversions Part 1

Format	Color
Hex	DBCDC6
RGB	219, 205, 198
RGB Percent	86%, 80%, 78%
CMY	0.1412, 0.1961, 0.2235
CMYK	0.00, 0.06, 0.10, 0.14
HSL	20°, 23%, 82%
HSV	20°, 10%, 86%
XYZ	61.2378, 62.7999, 62.3201
YIQ	208.3880, 10.5910, 0.7910

Conversions

Conversions Part 2

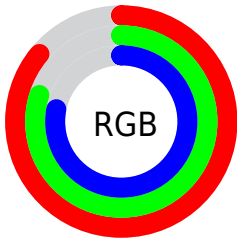
Format	Color
R _Y B	219, 209, 198
Decimal	14405062
CIE Lab	83.34, 3.67, 5.22
CIE LCh	83, 6.377, 54.885
Yxy	62.8027, 0.3286, 0.3370
Android (android.graphics.Color)	4292595142 (0xFFDBCDC6)
YUV	208.3880, -5.1213, 9.3067
Hunter-Lab	79.2464, -0.7451, 8.8463

Details

The HunterLab color $79.2464, -0.7451, 8.8463$ is a light color, and the websafe version is hex `CCCCCC`. A complement of this color would be $80.1286, -7.4157, -0.3443$, and the grayscale version is $79.6064, -4.2476, 4.3252$.

A 20% lighter version of the original color is $100.0000, -5.3358, 5.4332$, and $56.6033, -0.0020, 7.2407$ is the 20% darker color. If you saturate the color by 10%, you get $74.2990, 3.4632, 13.0244$, and if you desaturate by 10%, it is $84.3798, -4.6454, 4.3842$.

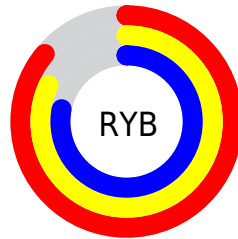
Distribution



Red (86%)

Green (80%)

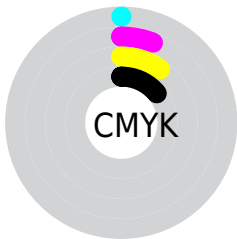
Blue (78%)



Red (86%)

Yellow (82%)

Blue (78%)

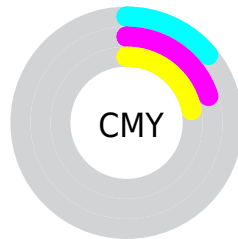


Cyan (0%)

Magenta (6%)

Yellow (10%)

Black (14%)



Cyan (14%)

Magenta (20%)

Yellow (22%)

Brightness & Saturation Gradients

These gradients show how the HunterLab color 79.2464, -0.7451, 8.8463 changes by changing the brightness by 10 percent. The first figure shows a shift by +10% for each color and the second figure -10%.

Similar to the brightness gradients but the following saturation gradients show a change of the HunterLab color 79.2464, -0.7451, 8.8463 by changing the saturation by 10% instead.

■ 79.2464, -0.7451,
8.8463

■ 79.2464, -0.7451,
8.8463

208.5313, -6.3454,
17.7022

■ 67.5882, -0.3014,
7.9638

104.3479, -1.7585,
10.6749

■ 56.5638, 0.1005,
7.0994

117.7347, -2.3191,
11.6190

■ 46.2141, 0.4544,
6.2532

131.6496, -2.9137,
12.5832

■ 36.5862, 0.7553,
5.4234

146.0732, -3.5406,
13.5676

■ 27.7390, 0.9961,
4.6066

160.9881, -4.1984,
14.5719

■ 19.7487, 1.1673,
3.7963

176.3788, -4.8859,

■ 12.7195, 1.2537,

15.5959

2.9799

192.2309, -5.6019,
16.6394

■ 6.0794, 2.3047,
3.8879

0.0000, NaN, NaN

■ 79.2464, -0.7451,
8.8463

■ 79.2464, -0.7451,
8.8463

■ 74.2990, 3.4632,
13.0244

■ 84.3798, -4.6454,
4.3842

■ 69.5540, 8.0146,
16.8638

■ 89.6755, -8.2612,
-0.3242

■ 65.0387, 12.9301,
20.3040

■ 94.8175, -13.3010,
-0.9656

■ 60.7822, 18.2214,
23.2711

■ 96.8505, -16.4719,
1.4734

■ 56.8179, 23.8796,
25.6808

■ 53.1825, 29.8624,
27.4433

■ 49.9149, 36.0790,
28.4758

■ 47.0531, 42.3738,
28.7275

■ 44.6231, 48.4897,
28.3110

Harmonies

Analogous

The Analogous color harmony consists of three colors that are next to each other on the color wheel.



79.2481, 1.2912, 6.6810



79.2464, -0.7451, 8.8463



79.2481, -3.6964, 9.7974

Triad

The Triadic color harmony groups three colors that are evenly spaced from another and form a triangle on the color wheel.



79.2481, -0.7473, 8.8475



79.2481, -10.1281, 4.8216



79.2481, -1.6889, -1.0478

Complementary

The Complementary color scheme is a pair of colors which are on the opposite of each other on the color wheel.



79.2464, -0.7451, 8.8463



80.1286, -7.4157, -0.3443

Split Complementary

Split-complementary colors differ from the complementary color scheme. The scheme consists of three colors, the original color and two neighbors of the complement color.



79.2481, -4.7677, -1.5922



79.2464, -0.7451, 8.8463



79.2481, -9.6093, 1.8710

Square

The Square scheme is like the rectangle color scheme, but the four colors are evenly spaced on the color wheel.



79.2481, -0.7473, 8.8475



79.2481, -9.0873, 7.5312



79.2481, -7.6590, -0.5049



79.2481, 0.7416, 0.9554

Rectangle

The Rectangle color scheme consists of four colors that form a rectangle on the color wheel.



79.2464, -0.7451, 8.8463



79.2481, -5.7700, 9.6405



79.2481, -7.6590, -0.5049



79.2481, -2.6836, -1.4106

Sweetspot

The Sweet Spot groups the original color and five complimentary colors.



79.2481, -0.7473, 8.8475



98.1361, -3.9672, 7.0668



77.5903, 5.2218, 0.3053



45.1732, -1.6637, 3.4692

0.0000, NaN, NaN



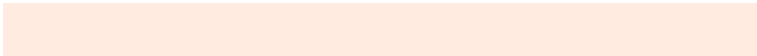
46.2646, -2.4686, 2.5136

Same Dimension

The Same Dimension uses a secret algorithm to generate beautiful new colors.



79.2481, -0.7473, 8.8475



92.6579, 0.3335, 11.7939



82.4584, -6.1166, 12.2879



37.0912, -0.3787, 4.1055



34.5532, 36.7903, 21.9356



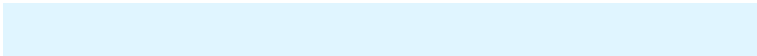
9.6383, 7.1614, 6.0644

Inverse Universe

The Inverse Universe completely reimagines the original color for something new.



80.1286, -7.4157, -0.3443



93.9742, -9.6402, -1.9520



76.8947, -2.0647, -4.3289



37.4963, -3.4468, -0.1236



39.2731, -6.1093, -35.8996



10.7481, -2.6908, -7.6256

Previews

White Background



This preview shows how the HunterLab color 79.2464, -0.7451, 8.8463 looks on a white background.

Color Contrast Check

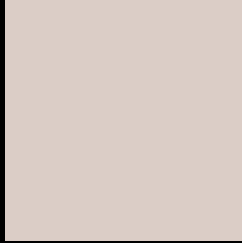
Large Text (above 18pt) WCAG AA × Fail

Any Text WCAG AA × Fail

Large Text (above 18pt) WCAG AAA × Fail

Any Text WCAG AAA × Fail

Black Background



This preview shows how the HunterLab color 79.2464, -0.7451, 8.8463 looks on a black background.

Color Contrast Check

Large Text (above 18pt) WCAG AA ✓ Pass

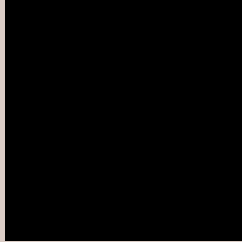
Any Text WCAG AA ✓ Pass

Large Text (above 18pt) WCAG AAA ✓ Pass

Any Text WCAG AAA ✓ Pass

If you want to check with other color combinations, try the [Color Contrast Checker](#).

HunterLab 79.2464, -0.7451, 8.8463 Background



This preview shows how black text looks on a background with the HunterLab color 79.2464, -0.7451, 8.8463.



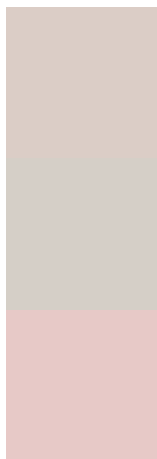
This preview shows how white text looks on a background with the HunterLab color 79.2464, -0.7451, 8.8463.

8.8463.

Color Blindness Simulation

Color vision deficiency is a very complex topic, and I could not describe the different causes any better than Wikipedia does, so if you want to learn more, you should check out their [article about color blindness](#).

Dichromacy



Original Color

79.2464, -0.7451, 8.8463

Protanopia

79.3066, -3.6009, 8.4101

Deuteranopia

79.3005, 5.6223, 8.5647



Tritanopia

79.2670, 5.1771, -0.6785

Trichromacy



Original Color

79.2464, -0.7451, 8.8463

Protanomaly

79.1917, -2.4323, 8.3011

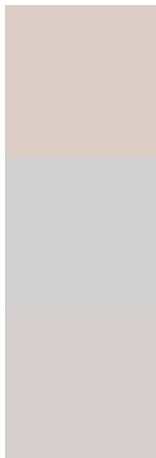
Deuteranomaly

79.1805, 3.7010, 8.3959

Tritanomaly

79.2384, 3.1009, 2.7675

Monochromacy



Original Color

79.2464, -0.7451, 8.8463

Achromatopsia

79.4202, -4.2377, 4.3151

Achromatomaly

79.3614, -3.1131, 6.1689

CSS Examples

Text

The CSS property to change the color of the text to HunterLab 79.2464, -0.7451, 8.8463 is called "color". The color property can be set on classes, ids or directly on the HTML element.

This example shows how text in the color `rgb(219, 205, 198)` looks like.

```
.text, #text, p{  
    color:rgb(219, 205, 198)  
}
```

If you want to add a text shadow in that color use the text-shadow property, you can generate a text shadow directly with our [CSS Text Shadow Generator](#).

Here you see how black text with a 4 pixel rgb(219, 205, 198) colored shadow looks like.

```
.shadow{ text-shadow: 4px 4px 2px rgb(219, 205, 198) }
```

Border

The CSS property to change the border of an element to HunterLab 79.2464, -0.7451, 8.8463 is called "border". The border property can be set on classes, ids or directly on the HTML element.

This example shows the color as border, it can be applied via the CSS property "border" or "border-color".

```
.border, #border, table{ border:4px solid rgb(219, 205, 198) }
```


If only the border color should be changed use the property border-color.

```
.border{ border-color:rgb(219, 205, 198) }
```

If you want to add a box shadow in that color use:

Here you see how a box with a 4 pixel rgb(219, 205, 198) colored shadow looks like.

```
.boxshadow{ -moz-box-shadow:4px 4px 4px  
4px rgb(219, 205, 198); -webkit-box-  
shadow:4px 4px 4px 4px rgb(219, 205, 198);  
box-shadow:4px 4px 4px 4px rgb(219, 205,  
198) }
```

Background

The CSS property to change the background color of an element to HunterLab 79.2464, -0.7451, 8.8463 is called "background". The background property can be set on classes, ids or directly on the HTML element.

```
.background, #background, body{  
background: rgb(219, 205, 198) }
```

If only the background color should be changed can be used:

```
.background{ background-color: rgb(219,  
205, 198) }
```

This example shows the color as background, it is applied via the CSS property "background".

To optimize and compress your CSS code, you can use our [online CSS compressor and optimizer](#) based on csstidy. If you want to create a linear or radial gradient as background or border, check our [CSS Gradient Generator](#).

Hey! You found this booklet interesting? Support Converting Colors with the new Membership Option!

The pro membership hides all ads, plus gives you double the colors in the color bucket, and more awesome pro features!

[Learn more, Memberships starting at \\$2.50/m!](#)

**Follow me
on Twitter!**

@ConvertingColor