

Converting Colors

HunterLab(79.3999, 1.0354,
11.2616)

Have a look what the booklet for
HunterLab(79.3999, 1.0354,
11.2616) contains.

HunterLab(79.4000, 1.0396, 11.2702)	3
<i>Conversions</i>	4
<i>Details</i>	6
<i>Harmonies</i>	12
<i>Previews</i>	24
<i>Color Blindness Simulation</i>	28
<i>CSS Examples</i>	31

Color

**HunterLab(79.4000, 1.0396,
11.2702)**

Conversions

Conversions Part 1

Format	Color
Hex	E1CCC1
RGB	225, 204, 193
RGB Percent	88%, 80%, 76%
CMY	0.1176, 0.2000, 0.2431
CMYK	0.00, 0.09, 0.14, 0.12
HSL	21°, 35%, 82%
HSV	21°, 14%, 88%
XYZ	62.2699, 63.0436, 59.3388
YIQ	209.0250, 16.0470, 1.0310

Conversions

Conversions Part 2

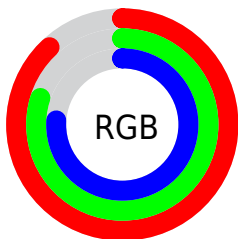
Format	Color
RYB	225, 210, 193
Decimal	14798017
CIELab	83.47, 5.53, 8.13
CIELCh	83, 9.831, 55.784
Yxy	63.0464, 0.3372, 0.3414
Android (android.graphics.Color)	4292988097 (0xFFE1CCC1)
YUV	209.0250, -7.9003, 14.0101
Hunter-Lab	79.4000, 1.0396, 11.2702

Details

The HunterLab color $79.4000, 1.0396, 11.2702$ is a light color, and the websafe version is hex `CCCCCC`. A complement of this color would be $80.5391, -8.7864, -2.9664$, and the grayscale version is $79.8899, -4.2627, 4.3406$.

A 20% lighter version of the original color is $99.8096, -6.3799, 8.1519$, and $56.7910, 1.8788, 9.1245$ is the 20% darker color. If you saturate the color by 10%, you get $74.4505, 5.4252, 15.4865$, and if you desaturate by 10%, it is $84.5470, -3.0136, 6.7229$.

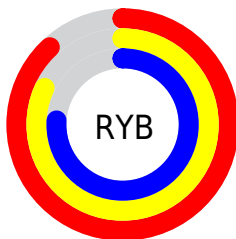
Distribution



Red (88%)

Green (80%)

Blue (76%)



Red (88%)

Yellow (82%)

Blue (76%)

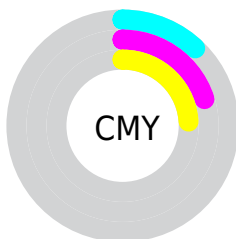


Cyan (0%)

Magenta (9%)

Yellow (14%)

Black (12%)



Cyan (12%)

Magenta (20%)

Yellow (24%)

Brightness & Saturation Gradients


These gradients show how the HunterLab color 79.4000, 1.0396, 11.2702 changes by changing the brightness by 10 percent. The first figure shows a shift by +10% for each color and the second figure -10%.


Similar to the brightness gradients but the following saturation gradients show a change of the HunterLab color 79.4000, 1.0396, 11.2702 by changing the saturation by 10% instead.


 79.4000, 1.0396,
11.2702

 79.4000, 1.0396,
11.2702


208.7434, -3.9088,
21.1747

 67.7339, 1.3953,
10.2423


 104.5162, 0.1898,
13.3667

 56.7011, 1.7046,
9.2230


117.9100, -0.2938,
14.4354

 46.3424, 1.9603,
8.2102


131.8315, -0.8142,
15.5190

 36.7050, 2.1561,
7.1992

146.2615, -1.3695,
16.6182

 27.8473, 2.2834,
6.1820

161.1827, -1.9580,
17.7332

 19.8454, 2.3301,
5.1452

176.5794, -2.5782,

 12.8030, 2.2775,

18.8642

4.0635

192.4373, -3.2289,
20.0114

■ 6.1951, 3.5573,
4.3366

0.0000, NaN, NaN

■ 79.4000, 1.0396,
11.2702

■ 79.4000, 1.0396,
11.2702

■ 74.4505, 5.4252,
15.4865

■ 84.5470, -3.0136,
6.7229

■ 69.7164, 10.1779,
19.3097

■ 89.8664, -6.7579,
1.8890

■ 65.2265, 15.3155,
22.6712

■ 95.1542, -11.2714,
-0.5133

■ 61.0114, 20.8433,
25.4896

■ 97.3384, -14.7224,
2.0950

■ 57.1058, 26.7412,
27.6756

■ 53.5470, 32.9504,
29.1398

■ 50.3734, 39.3566,
29.8110

■ 47.6204, 45.7755,
29.6707

■ 46.2254, 49.3608,
29.3480

Harmonies

Analogous

The Analogous color harmony consists of three colors that are next to each other on the color wheel.



79.4018, 4.2766, 8.0617



79.4000, 1.0396, 11.2702



79.4018, -3.5586, 12.6203

Triad

The Triadic color harmony groups three colors that are evenly spaced from another and form a triangle on the color wheel.



79.4018, 1.0373, 11.2714



79.4018, -13.2728, 4.9673



79.4018, -0.1697, -4.0322

Complementary

The Complementary color scheme is a pair of colors which are on the opposite of each other on the color wheel.



79.4000, 1.0396, 11.2702



80.5391, -8.7864, -2.9664

Split Complementary

Split-complementary colors differ from the complementary color scheme. The scheme consists of three colors, the original color and two neighbors of the complement color.



79.4018, -4.9210, -4.9814



79.4000, 1.0396, 11.2702



79.4018, -12.4139, 0.3912

Square

The Square scheme is like the rectangle color scheme, but the four colors are evenly spaced on the color wheel.



79.4018, 1.0373, 11.2714



79.4018, -11.7594, 9.1208



79.4018, -9.3848, -3.3184



79.4018, 3.5681, -0.7963

Rectangle

The Rectangle color scheme consists of four colors that form a rectangle on the color wheel.



79.4000, 1.0396, 11.2702



79.4018, -6.7459, 12.3454



79.4018, -9.3848, -3.3184



79.4018, -1.7045, -4.6372

Sweetspot

The Sweet Spot groups the original color and five complimentary colors.



79.4018, 1.0373, 11.2714



97.5523, -3.5599, 7.6427



76.8248, 10.3140, -1.7512



44.9208, -1.4896, 3.7254

0.0000, NaN, NaN



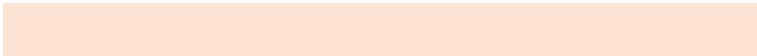
46.2646, -2.4686, 2.5136

Same Dimension

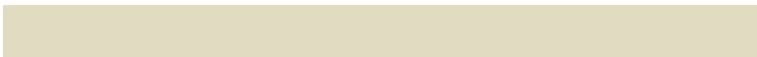
The Same Dimension uses a secret algorithm to generate beautiful new colors.



79.4018, 1.0373, 11.2714



89.8288, 2.6186, 14.4388



84.1844, -6.9909, 16.2182



38.0359, -0.4363, 4.2463



35.3685, 36.6993, 22.4364



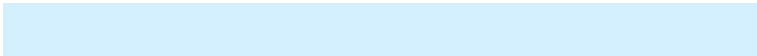
10.1481, 7.4903, 6.3844

Inverse Universe

The Inverse Universe completely reimagines the original color for something new.



80.5391, -8.7864, -2.9664



91.4001, -10.9636, -5.2423



75.7069, -0.7955, -9.1513



38.3891, -3.4836, -0.1714



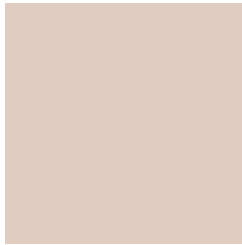
39.3644, -5.3450, -37.6638



11.1302, -2.5796, -8.3432

Previews

White Background



This preview shows how the HunterLab color 79.4000, 1.0396, 11.2702 looks on a white background.

Color Contrast Check

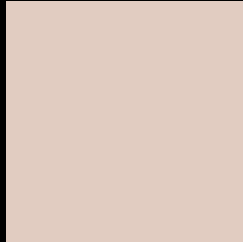
Large Text (above 18pt) WCAG AA × Fail

Any Text WCAG AA × Fail

Large Text (above 18pt) WCAG AAA × Fail

Any Text WCAG AAA × Fail

Black Background



This preview shows how the HunterLab color 79.4000, 1.0396, 11.2702 looks on a black background.

Color Contrast Check

Large Text (above 18pt) WCAG AA ✓ Pass

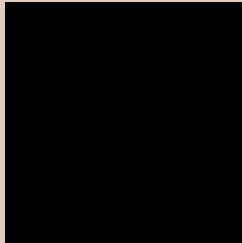
Any Text WCAG AA ✓ Pass

Large Text (above 18pt) WCAG AAA ✓ Pass

Any Text WCAG AAA ✓ Pass

If you want to check with other color combinations, try the [Color Contrast Checker](#).

HunterLab 79.4000, 1.0396, 11.2702 Background



This preview shows how black text looks on a background with the HunterLab color 79.4000, 1.0396, 11.2702.



This preview shows how white text looks on a background with the HunterLab color 79.4000, 1.0396,

Color Blindness Simulation

Color vision deficiency is a very complex topic, and I could not describe the different causes any better than Wikipedia does, so if you want to learn more, you should check out their [article about color blindness](#).

Dichromacy



Original Color

79.4000, 1.0396, 11.2702

Protanopia

79.3806, -3.5750, 10.2887

Deuteranopia

79.4737, 5.9152, 10.9982



Tritanopia

79.5142, 7.3874, 0.6837

Trichromacy



Original Color

79.4000, 1.0396, 11.2702

Protanomaly

79.4341, -1.8835, 10.8182

Deuteranomaly

79.4513, 4.3267, 10.9458

Tritanomaly

79.4519, 5.1583, 4.5168

Monochromacy



Original Color

79.4000, 1.0396, 11.2702

Achromatopsia

79.8497, -4.2606, 4.3384

Achromatomaly

79.6144, -2.2982, 6.9415

CSS Examples

Text

The CSS property to change the color of the text to HunterLab 79.4000, 1.0396, 11.2702 is called "color". The color property can be set on classes, ids or directly on the HTML element.

This example shows how text in the color `rgb(225, 204, 193)` looks like.

```
.text, #text, p{  
    color:rgb(225, 204, 193)  
}
```

If you want to add a text shadow in that color use the text-shadow property, you can generate a text shadow directly with our [CSS Text Shadow Generator](#).

Here you see how black text with a 4 pixel rgb(225, 204, 193) colored shadow looks like.

```
.shadow{ text-shadow: 4px 4px 2px rgb(225, 204, 193) }
```

Border

The CSS property to change the border of an element to HunterLab 79.4000, 1.0396, 11.2702 is called "border". The border property can be set on classes, ids or directly on the HTML element.

This example shows the color as border, it can be applied via the CSS property "border" or "border-color".

```
.border, #border, table{ border:4px solid rgb(225, 204, 193) }
```


If only the border color should be changed use the property `border-color`.

```
.border{ border-color:rgb(225, 204, 193) }
```

If you want to add a box shadow in that color use:

Here you see how a box with a 4 pixel `rgb(225, 204, 193)` colored shadow looks like.

```
.boxshadow{ -moz-box-shadow:4px 4px 4px  
4px rgb(225, 204, 193); -webkit-box-  
shadow:4px 4px 4px 4px rgb(225, 204, 193);  
box-shadow:4px 4px 4px 4px rgb(225, 204,  
193) }
```

Background

The CSS property to change the background color of an element to HunterLab 79.4000, 1.0396, 11.2702 is called "background". The background property can be set on classes, ids or directly on the HTML element.

```
.background, #background, body{  
background: rgb(225, 204, 193) }
```

If only the background color should be changed can be used:

```
.background{ background-color: rgb(225,  
204, 193) }
```

This example shows the color as background, it is applied via the CSS property "background".

To optimize and compress your CSS code, you can use our [online CSS compressor and optimizer](#) based on csstidy. If you want to create a linear or radial gradient as background or border, check our [CSS Gradient Generator](#).

Hey! You found this booklet interesting? Support Converting Colors with the new Membership Option!

The pro membership hides all ads, plus gives you double the colors in the color bucket, and more awesome pro features!

[Learn more, Memberships starting at \\$2.50/m!](#)

**Follow me
on Twitter!**

@ConvertingColor