

Converting Colors

HunterLab(79.4360, 6.6060,
5.3183)

Have a look what the booklet for
HunterLab(79.4360, 6.6060, 5.3183)
contains.

HunterLab(79.4056, 6.3935, 5.4412)	3
<i>Conversions</i>	4
<i>Details</i>	6
<i>Harmonies</i>	12
<i>Previews</i>	24
<i>Color Blindness Simulation</i>	28
<i>CSS Examples</i>	31

Color

**HunterLab(79.4056, 6.3935,
5.4412)**

Conversions

Conversions Part 1

Format	Color
Hex	E6C9CE
RGB	230, 201, 206
RGB Percent	90%, 79%, 81%
CMY	0.0980, 0.2117, 0.1922
CMYK	0.00, 0.13, 0.10, 0.10
HSL	350°, 37%, 85%
HSV	350°, 13%, 90%
XYZ	64.6603, 63.0525, 67.1549
YIQ	210.2410, 15.6790, 7.7030

Conversions

Conversions Part 2

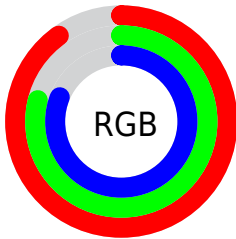
Format	Color
R _Y B	230, 201, 206
Decimal	15124942
CIE Lab	83.47, 10.99, 1.26
CIE LCh	83, 11.067, 6.529
Yxy	63.0553, 0.3318, 0.3236
Android (android.graphics.Color)	4293315022 (0xFFE6C9CE)
YUV	210.2410, -2.0908, 17.3286
Hunter-Lab	79.4056, 6.3935, 5.4412

Details

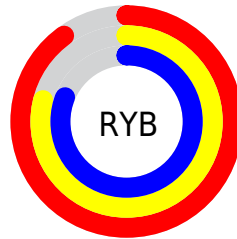
The HunterLab color **79.4056, 6.3935, 5.4412** is a light color, and the websafe version is hex **FFCCCC**. A complement of this color would be **86.2838, -14.5059, 3.9626**, and the grayscale version is **80.3886, -4.2893, 4.3677**.

A 20% lighter version of the original color is **100.0000, -5.3358, 5.4332**, and **56.6861, 6.4670, 3.9726** is the 20% darker color. If you saturate the color by 10%, you get **72.2858, 15.5393, 6.2693**, and if you desaturate by 10%, it is **86.9343, -2.4793, 4.9240**.

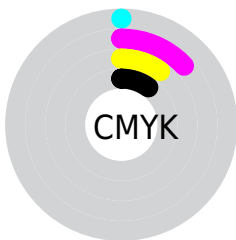
Distribution



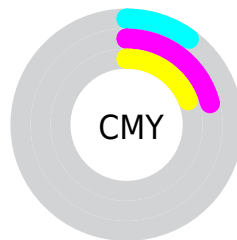
- Red (90%)
- Green (79%)
- Blue (81%)



- Red (90%)
- Yellow (79%)
- Blue (81%)



- Cyan (0%)
- Magenta (13%)
- Yellow (10%)
- Black (10%)



- Cyan (10%)
- Magenta (21%)
- Yellow (19%)

Brightness & Saturation Gradients

These gradients show how the HunterLab color 79.4056, 6.3935, 5.4412 changes by changing the brightness by 10 percent. The first figure shows a shift by +10% for each color and the second figure -10%.

Similar to the brightness gradients but the following saturation gradients show a change of the HunterLab color 79.4056, 6.3935, 5.4412 by changing the saturation by 10% instead.

79.4056, 6.3935,
5.4412

79.4056, 6.3935,
5.4412

208.7511, 3.3481,
12.9143

67.7392, 6.4945,
4.7487

104.5224, 6.0202,
6.9186

56.7061, 6.5358,
4.0861

117.9164, 5.7609,
7.6987

46.3471, 6.5080,
3.4560

131.8381, 5.4568,
8.5055

36.7093, 6.4019,
2.8601

146.2684, 5.1106,
9.3383

27.8513, 6.2050,
2.3001

161.1898, 4.7248,
10.1963

19.8490, 5.8997,
1.7782

176.5867, 4.3012,

12.8061, 5.4599,

11.0787

1.2962

192.4448, 3.8418,
11.9849

■ 6.1993, 7.3973,
1.1789

0.0000, NaN, NaN

■ 79.4056, 6.3935,
5.4412

■ 79.4056, 6.3935,
5.4412

■ 72.2858, 15.5393,
6.2693

■ 86.9343, -2.4793,
4.9240

■ 65.6445, 24.9340,
7.4589

■ 94.8074, -11.0808,
4.6637

■ 59.5764, 34.4673,
9.0629

■ 97.7564, -13.2308,
2.6251

■ 54.1934, 43.9011,
11.1138

■ 49.6217, 52.8083,
13.5957

■ 45.9865, 60.5542,
16.4078

■ 43.3805, 66.3987,
19.3396

■ 41.8184, 69.7808,
22.0933

■ 41.1993, 70.9208,
23.7868

Harmonies

Analogous

The Analogous color harmony consists of three colors that are next to each other on the color wheel.



79.4074, 5.5560, 0.2675



79.4056, 6.3935, 5.4412



79.4074, 4.3165, 10.0053

Triad

The Triadic color harmony groups three colors that are evenly spaced from another and form a triangle on the color wheel.



79.4074, 6.3912, 5.4425



79.4074, -10.3558, 11.8902



79.4074, -8.3535, -5.3297

Complementary

The Complementary color scheme is a pair of colors which are on the opposite of each other on the color wheel.



79.4056, 6.3935, 5.4412



86.2838, -14.5059, 3.9626

Split Complementary

Split-complementary colors differ from the complementary color scheme. The scheme consists of three colors, the original color and two neighbors of the complement color.



79.4074, -12.4512, -1.8144



79.4056, 6.3935, 5.4412



79.4074, -13.5854, 8.1741

Square

The Square scheme is like the rectangle color scheme, but the four colors are evenly spaced on the color wheel.



79.4074, 6.3912, 5.4425



79.4074, -5.4240, 13.5631



79.4074, -14.3421, 3.1856



79.4074, -3.0515, -6.1826

Rectangle

The Rectangle color scheme consists of four colors that form a rectangle on the color wheel.



79.4056, 6.3935, 5.4412



79.4074, 1.5944, 12.1628



79.4074, -14.3421, 3.1856



79.4074, -9.9131, -4.4093

Sweetspot

The Sweet Spot groups the original color and five complimentary colors.



79.4074, 6.3912, 5.4425



96.5049, -1.3940, 5.5990



79.6530, 8.7896, -6.4893



44.3468, -0.2994, 2.6072

0.0000, NaN, NaN



46.2646, -2.4686, 2.5136

Same Dimension

The Same Dimension uses a secret algorithm to generate beautiful new colors.



79.4074, 6.3912, 5.4425



87.2370, 9.7047, 6.3140



81.9916, 0.7870, 10.5756



37.9583, 1.6554, 2.4372



31.0192, 53.4360, 17.6037



8.5033, 14.7887, 3.7392

Inverse Universe

The Inverse Universe completely reimagines the original color for something new.



79.4074, 6.3912, 5.4425



87.2370, 9.7047, 6.3140



83.5158, -8.9781, -1.8427



37.9583, 1.6554, 2.4372



31.0192, 53.4360, 17.6037



8.5033, 14.7887, 3.7392

Previews

White Background



This preview shows how the HunterLab color 79.4056, 6.3935, 5.4412 looks on a white background.

Color Contrast Check

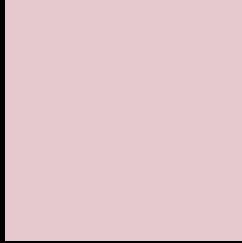
Large Text (above 18pt) WCAG AA × Fail

Any Text WCAG AA × Fail

Large Text (above 18pt) WCAG AAA × Fail

Any Text WCAG AAA × Fail

Black Background



This preview shows how the HunterLab color 79.4056, 6.3935, 5.4412 looks on a black background.

Color Contrast Check

Large Text (above 18pt) WCAG AA ✓ Pass

Any Text WCAG AA ✓ Pass

Large Text (above 18pt) WCAG AAA ✓ Pass

Any Text WCAG AAA ✓ Pass

If you want to check with other color combinations, try the [Color Contrast Checker](#).

HunterLab 79.4056, 6.3935, 5.4412 Background



This preview shows how black text looks on a background with the HunterLab color 79.4056, 6.3935, 5.4412.



This preview shows how white text looks on a background with the HunterLab color 79.4056, 6.3935,

Color Blindness Simulation

Color vision deficiency is a very complex topic, and I could not describe the different causes any better than Wikipedia does, so if you want to learn more, you should check out their [article about color blindness](#).

Dichromacy



Original Color

79.4056, 6.3935, 5.4412

Protanopia

79.4216, -2.5975, 3.8624

Deuteranopia

79.3017, 6.0456, 5.3139



Tritanopia

79.5008, 8.7802, 1.1956

Trichromacy



Original Color

79.4056, 6.3935, 5.4412

Protanomaly

79.4494, 0.5515, 4.4333

Deuteranomaly

79.3017, 6.0456, 5.3139

Tritanomaly

79.4046, 8.2687, 2.5647

Monochromacy



Original Color

79.4056, 6.3935, 5.4412

Achromatopsia

80.2795, -4.2835, 4.3617

Achromatomaly

79.9880, -0.6462, 4.5644

CSS Examples

Text

The CSS property to change the color of the text to HunterLab 79.4056, 6.3935, 5.4412 is called "color". The color property can be set on classes, ids or directly on the HTML element.

This example shows how text in the color `rgb(230, 201, 206)` looks like.

```
.text, #text, p{  
  color:rgb(230, 201, 206)  
}
```

If you want to add a text shadow in that color use the text-shadow property, you can generate a text shadow directly with our [CSS Text Shadow Generator](#).

Here you see how black text with a 4 pixel rgb(230, 201, 206) colored shadow looks like.

```
.shadow{ text-shadow: 4px 4px 2px rgb(230, 201, 206) }
```

Border

The CSS property to change the border of an element to HunterLab 79.4056, 6.3935, 5.4412 is called "border".

The border property can be set on classes, ids or directly on the HTML element.

This example shows the color as border, it can be applied via the CSS property "border" or "border-color".

```
.border, #border, table{ border:4px solid rgb(230, 201, 206) }
```


If only the border color should be changed use the property `border-color`.

```
.border{ border-color:rgb(230, 201, 206) }
```

If you want to add a box shadow in that color use:

Here you see how a box with a 4 pixel `rgb(230, 201, 206)` colored shadow looks like.

```
.boxshadow{ -moz-box-shadow:4px 4px 4px  
4px rgb(230, 201, 206); -webkit-box-  
shadow:4px 4px 4px 4px rgb(230, 201, 206);  
box-shadow:4px 4px 4px 4px rgb(230, 201,  
206) }
```

Background

The CSS property to change the background color of an element to HunterLab 79.4056, 6.3935, 5.4412 is called "background". The background property can be set on classes, ids or directly on the HTML element.

```
.background, #background, body{  
background: rgb(230, 201, 206) }
```

If only the background color should be changed can be used:

```
.background{ background-color: rgb(230,  
201, 206) }
```

This example shows the color as background, it is applied via the CSS property "background".

To optimize and compress your CSS code, you can use our [online CSS compressor and optimizer](#) based on csstidy. If you want to create a linear or radial gradient as background or border, check our [CSS Gradient Generator](#).

Hey! You found this booklet interesting? Support Converting Colors with the new Membership Option!

The pro membership hides all ads, plus gives you double the colors in the color bucket, and more awesome pro features!

[Learn more, Memberships starting at \\$2.50/m!](#)

**Follow me
on Twitter!**

@ConvertingColor