

# Converting Colors

HunterLab(79.5179, 22.3790,  
-2.1373)

Have a look what the booklet for  
HunterLab(79.5179, 22.3790,  
-2.1373) contains.

<b>HunterLab(79.5179, 22.3790, -2.1373)</b> .....	3
<b><i>Conversions</i></b> .....	4
<b><i>Details</i></b> .....	6
<b><i>Harmonies</i></b> .....	12
<b><i>Previews</i></b> .....	24
<b><i>Color Blindness Simulation</i></b> .....	28
<b><i>CSS Examples</i></b> .....	31

# Color

**HunterLab(79.5179, 22.3790,  
-2.1373)**

# Conversions

## Conversions Part 1

Format	Color
Hex	FCBFDE
RGB	252, 191, 222
RGB Percent	99%, 75%, 87%
CMY	0.0118, 0.2510, 0.1294
CMYK	0.00, 0.24, 0.12, 0.01
HSL	330°, 91%, 87%
HSV	330°, 24%, 99%
XYZ	71.9605, 63.2310, 77.5193
YIQ	212.7730, 26.4050, 22.5730

# Conversions

## Conversions Part 2

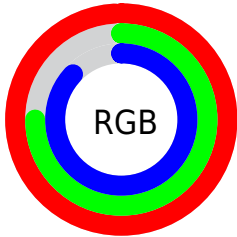
Format	Color
<a href="#">RYB</a>	<a href="#">252, 191, 222</a>
Decimal	<a href="#">16564190</a>
CIELab	<a href="#">83.57, 26.55, -6.92</a>
CIELCh	<a href="#">84, 27.441, 345.388</a>
Yxy	<a href="#">63.2338, 0.3383, 0.2973</a>
Android (android.graphics.Color)	<a href="#">4294754270 (0xFFFCBFDE)</a>
YUV	<a href="#">212.7730, 4.5489, 34.4021</a>
Hunter-Lab	<a href="#">79.5179, 22.3790, -2.1373</a>

# Details

The HunterLab color  $79.5179, 22.3790, -2.1373$  is a light color, and the websafe version is hex  $\text{FFCCFF}$ . A complement of this color would be  $92.6927, -28.6637, 12.8568$ , and the grayscale version is  $81.4479, -4.3459, 4.4252$ .

A 20% lighter version of the original color is  $97.7828, -1.6112, 2.8603$ , and  $56.8185, 21.2872, -2.7655$  is the 20% darker color. If you saturate the color by 10%, you get  $72.4783, 34.0583, -4.4111$ , and if you desaturate by 10%, it is  $87.1070, 10.8067, 0.6774$ .

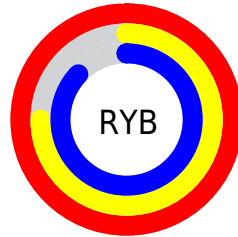
# Distribution



Red (99%)

Green (75%)

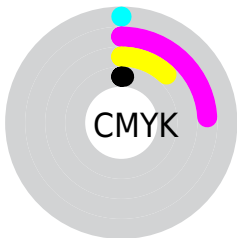
Blue (87%)



Red (99%)

Yellow (75%)

Blue (87%)

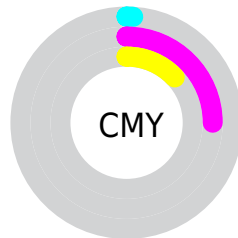


Cyan (0%)

Magenta (24%)

Yellow (12%)

Black (1%)



Cyan (1%)

Magenta (25%)

Yellow (13%)

# Brightness & Saturation Gradients

These gradients show how the HunterLab color 79.5179, 22.3790, -2.1373 changes by changing the brightness by 10 percent. The first figure shows a shift by +10% for each color and the second figure -10%.

Similar to the brightness gradients but the following saturation gradients show a change of the HunterLab color 79.5179, 22.3790, -2.1373 by changing the saturation by 10% instead.



79.5179, 22.3790,  
-2.1373

79.5179, 22.3790,  
-2.1373

208.9061, 24.5311,  
2.6193

67.8457, 21.7987,  
-2.4652

104.6455, 23.2913,  
-1.3406

56.8065, 21.1301,  
-2.7444

118.0445, 23.6418,  
-0.8808

46.4410, 20.3601,  
-2.9686

131.9711, 23.9280,  
-0.3828

36.7962, 19.4763,  
-3.1317

146.4061, 24.1544,  
0.1514

27.9305, 18.4640,  
-3.2260

161.3320, 24.3248,  
0.7202

19.9197, 17.3077,  
-3.2413

176.7333, 24.4425,

12.8672, 15.9997,

1.3220

-3.1642

192.5956, 24.5104,  
1.9554

6.2825, 18.4614,  
-4.2255

0.0000, NaN, NaN

79.5179, 22.3790,  
-2.1373

79.5179, 22.3790,  
-2.1373

72.4783, 34.0583,  
-4.4111

87.1070, 10.8067,  
0.6774

66.0835, 45.6504,  
-5.9881

95.1574, -0.5569,  
3.9039

60.4524, 56.7863,  
-6.6731

99.7174, -6.3201,  
5.0829

55.7114, 66.8901,  
-6.2641

■ 51.9769, 75.2004,  
-4.6080

■ 49.3221, 80.9376,  
-1.6883

■ 47.7308, 83.6393,  
2.2926

■ 47.1759, 84.0969,  
4.8509

# Harmonies

## Analogous

The Analogous color harmony consists of three colors that are next to each other on the color wheel.



79.5197, 15.0270, -14.9745



79.5179, 22.3790, -2.1373



79.5197, 22.2740, 10.5879

# Triad

The Triadic color harmony groups three colors that are evenly spaced from another and form a triangle on the color wheel.



79.5197, 22.3763, -2.1357



79.5197, -10.9986, 24.5938



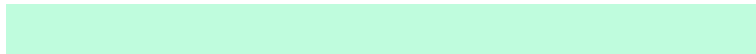
79.5197, -21.6182, -15.2667

# Complementary

The Complementary color scheme is a pair of colors which are on the opposite of each other on the color wheel.



79.5179, 22.3790, -2.1373



92.6927, -28.6637, 12.8568

# Split Complementary

Split-complementary colors differ from the complementary color scheme. The scheme consists of three colors, the original color and two neighbors of the complement color.



79.5197, -27.6920, -2.4852



79.5179, 22.3790, -2.1373



79.5197, -21.8443, 19.7495

# Square

The Square scheme is like the rectangle color scheme, but the four colors are evenly spaced on the color wheel.



79.5197, 22.3763, -2.1357



79.5197, 2.3872, 24.6556



79.5197, -27.7719, 10.2918



79.5197, -10.6710, -23.3683



# Rectangle

The Rectangle color scheme consists of four colors that form a rectangle on the color wheel.



79.5179, 22.3790, -2.1373



79.5197, 17.9696, 17.3061



79.5197, -27.7719, 10.2918



79.5197, -24.2645, -11.2887

# Sweetspot

The Sweet Spot groups the original color and five complimentary colors.



79.5197, 22.3763, -2.1357



94.1184, 2.6369, 3.0048



77.1908, 17.2273, -22.8726



43.3131, 1.5405, 1.2968

0.0000, NaN, NaN



46.2646, -2.4686, 2.5136



# Same Dimension

The Same Dimension uses a secret algorithm to generate beautiful new colors.



79.5197, 22.3763, -2.1357



77.0863, 28.3740, -3.3520



78.5917, 17.5766, 11.1041



41.6803, 2.4877, 0.9877



34.0925, 60.8556, 2.8738



10.4781, 18.8933, -0.5868



# Inverse Universe

The Inverse Universe completely reimagines the original color for something new.



79.5197, 22.3763, -2.1357



77.0863, 28.3740, -3.3520



93.6283, -23.3268, -0.5015



41.6803, 2.4877, 0.9877



34.0925, 60.8556, 2.8738



10.4781, 18.8933, -0.5868



# Previews

## White Background



This preview shows how the HunterLab color 79.5179, 22.3790, -2.1373 looks on a white background.

## Color Contrast Check

Large Text (above 18pt) WCAG AA × Fail

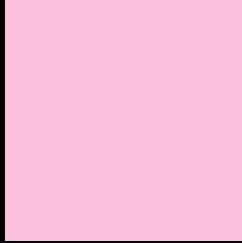
Any Text WCAG AA × Fail

Large Text (above 18pt) WCAG AAA × Fail

Any Text WCAG AAA × Fail



# Black Background



This preview shows how the HunterLab color 79.5179, 22.3790, -2.1373 looks on a black background.

## Color Contrast Check

Large Text (above 18pt) WCAG AA ✓ Pass

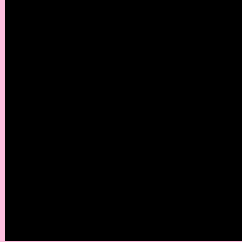
Any Text WCAG AA ✓ Pass

Large Text (above 18pt) WCAG AAA ✓ Pass

Any Text WCAG AAA ✓ Pass

If you want to check with other color combinations, try the [Color Contrast Checker](#).

# HunterLab 79.5179, 22.3790, -2.1373 Background



This preview shows how black text looks on a background with the HunterLab color 79.5179, 22.3790, -2.1373.



This preview shows how white text looks on a background with the HunterLab color 79.5179, 22.3790, -2.1373.

-2.1373.

# Color Blindness Simulation

Color vision deficiency is a very complex topic, and I could not describe the different causes any better than Wikipedia does, so if you want to learn more, you should check out their [article about color blindness](#).

## Dichromacy



### Original Color

79.5179, 22.3790, -2.1373

### Protanopia

79.6436, -0.2960, -7.7628

### Deuteranopia

79.5334, 6.2032, -1.3593



## Tritanopia

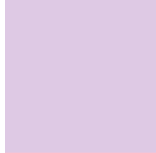
79.3839, 18.2069, 4.6652

# Trichromacy



## Original Color

79.5179, 22.3790, -2.1373



## Protanomaly

79.3122, 7.5250, -5.8658



## Deuteranomaly

79.4362, 11.9391, -1.9005



## Tritanomaly

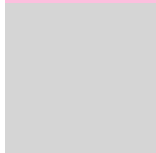
79.3805, 19.9377, 2.2444

# Monochromacy



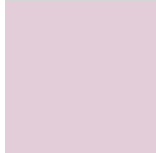
## Original Color

79.5179, 22.3790, -2.1373



## Achromatopsia

81.5713, -4.3524, 4.4319



## Achromatomaly

80.5924, 4.9318, 1.9532

# CSS Examples

## Text

The CSS property to change the color of the text to HunterLab 79.5179, 22.3790, -2.1373 is called "color". The color property can be set on classes, ids or directly on the HTML element.

This example shows how text in the color `rgb(252, 191, 222)` looks like.

```
.text, #text, p{  
    color:rgb(252, 191, 222)  
}
```

If you want to add a text shadow in that color use the text-shadow property, you can generate a text shadow directly with our [CSS Text Shadow Generator](#).

Here you see how black text with a 4 pixel rgb(252, 191, 222) colored shadow looks like.

```
.shadow{ text-shadow: 4px 4px 2px rgb(252, 191, 222) }
```

## Border

The CSS property to change the border of an element to HunterLab 79.5179, 22.3790, -2.1373 is called "border". The border property can be set on classes, ids or directly on the HTML element.

This example shows the color as border, it can be applied via the CSS property "border" or "border-color".

```
.border, #border, table{ border:4px solid rgb(252, 191, 222) }
```



If only the border color should be changed use the property `border-color`.

```
.border{ border-color:rgb(252, 191, 222) }
```

If you want to add a box shadow in that color use:

Here you see how a box with a 4 pixel `rgb(252, 191, 222)` colored shadow looks like.

```
.boxshadow{ -moz-box-shadow:4px 4px 4px  
4px rgb(252, 191, 222); -webkit-box-  
shadow:4px 4px 4px 4px rgb(252, 191, 222);  
box-shadow:4px 4px 4px 4px rgb(252, 191,  
222) }
```

# Background

The CSS property to change the background color of an element to HunterLab 79.5179, 22.3790, -2.1373 is called "background". The background property can be set on classes, ids or directly on the HTML element.

```
.background, #background, body{  
background: rgb(252, 191, 222) }
```

If only the background color should be changed can be used:

```
.background{ background-color: rgb(252,  
191, 222) }
```

This example shows the color as background, it is applied via the CSS property "background".

To optimize and compress your CSS code, you can use our [online CSS compressor and optimizer](#) based on csstidy. If you want to create a linear or radial gradient as background or border, check our [CSS Gradient Generator](#).

Hey! You found this booklet interesting? Support Converting Colors with the new Membership Option!

The pro membership hides all ads, plus gives you double the colors in the color bucket, and more awesome pro features!

**[Learn more, Memberships starting at \\$2.50/m!](#)**

**Follow me  
on Twitter!**

@ConvertingColor