

Converting Colors

HunterLab(79.5404, 0.1479,
10.5733)

Have a look what the booklet for
HunterLab(79.5404, 0.1479,
10.5733) contains.

HunterLab(79.5555, 0.1421, 10.5463)	3
<i>Conversions</i>	4
<i>Details</i>	6
<i>Harmonies</i>	12
<i>Previews</i>	24
<i>Color Blindness Simulation</i>	28
<i>CSS Examples</i>	31

Color

**HunterLab(79.5555, 0.1421,
10.5463)**

Conversions

Conversions Part 1

Format	Color
Hex	DFCDC3
RGB	223, 205, 195
RGB Percent	87%, 80%, 76%
CMY	0.1255, 0.1961, 0.2353
CMYK	0.00, 0.08, 0.13, 0.13
HSL	21°, 30%, 82%
HSV	21°, 13%, 87%
XYZ	62.1131, 63.2908, 60.5724
YIQ	209.2420, 13.9380, 0.7060

Conversions

Conversions Part 2

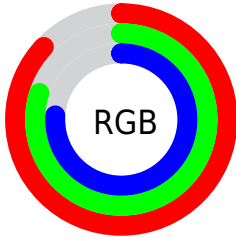
Format	Color
R_{YB}	223, 211, 195
Decimal	14667203
CIE Lab	83.60, 4.60, 7.23
CIE LCh	84, 8.570, 57.509
Yxy	63.2936, 0.3340, 0.3403
Android (android.graphics.Color)	4292857283 (0xFFDFCDC3)
YUV	209.2420, -7.0213, 12.0658
Hunter-Lab	79.5555, 0.1421, 10.5463

Details

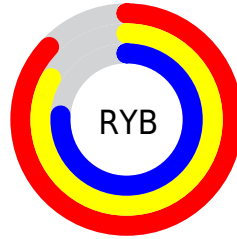
The HunterLab color $79.5555, 0.1421, 10.5463$ is a light color, and the websafe version is hex `CCCCCC`. A complement of this color would be $80.3225, -8.0737, -2.1792$, and the grayscale version is $79.9802, -4.2675, 4.3455$.

A 20% lighter version of the original color is $99.9041, -5.8614, 6.8020$, and $56.9044, 0.8675, 8.8237$ is the 20% darker color. If you saturate the color by 10%, you get $74.7080, 4.2692, 14.8535$, and if you desaturate by 10%, it is $84.5891, -3.6612, 5.9028$.

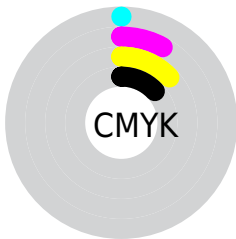
Distribution



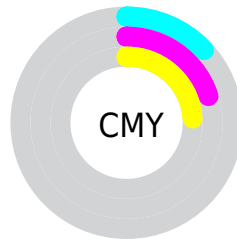
- Red (87%)
- Green (80%)
- Blue (76%)



- Red (87%)
- Yellow (83%)
- Blue (76%)



- Cyan (0%)
- Magenta (8%)
- Yellow (13%)
- Black (13%)



- Cyan (13%)
- Magenta (20%)
- Yellow (24%)

Brightness & Saturation Gradients

These gradients show how the HunterLab color 79.5555, 0.1421, 10.5463 changes by changing the brightness by 10 percent. The first figure shows a shift by +10% for each color and the second figure -10%.

Similar to the brightness gradients but the following saturation gradients show a change of the HunterLab color 79.5555, 0.1421, 10.5463 by changing the saturation by 10% instead.

■ 79.5555, 0.1421,
10.5463

■ 79.5555, 0.1421,
10.5463

208.9579, -5.1356,
20.1269

■ 67.8813, 0.5423,
9.5636

104.6866, -0.7904,
12.5598

■ 56.8401, 0.8984,
8.5924

118.0874, -1.3129,
13.5899

■ 46.4724, 1.2038,
7.6316

132.0156, -1.8708,
14.6367

■ 36.8252, 1.4527,
6.6772

146.4521, -2.4622,
15.7004

■ 27.9570, 1.6375,
5.7229

161.3795, -3.0857,
16.7812

■ 19.9434, 1.7473,
4.7576

176.7823, -3.7399,

■ 12.8877, 1.7652,

17.8793

3.7601

192.6461, -4.4236,
18.9945

■ 6.3100, 2.8421,
4.4170

0.0000, NaN, NaN

■ 79.5555, 0.1421,
10.5463

■ 79.5555, 0.1421,
10.5463

■ 74.7080, 4.2692,
14.8535

■ 84.5891, -3.6612,
5.9028

■ 70.0624, 8.7549,
18.7641

■ 89.7853, -7.1638,
0.9662

■ 65.6451, 13.6192,
22.2120

■ 94.8919, -11.7176,
-0.8456

■ 61.4839, 18.8722,
25.1196

■ 97.1741, -15.3104,
1.8861

■ 57.6104, 24.5030,
27.4012

■ 54.0586, 30.4679,
28.9708

■ 50.8641, 36.6755,
29.7569

■ 48.0605, 42.9718,
29.7327

■ 46.2364, 47.5540,
29.3232

Harmonies

Analogous

The Analogous color harmony consists of three colors that are next to each other on the color wheel.



79.5573, 3.0483, 7.8011



79.5555, 0.1421, 10.5463



79.5573, -3.8976, 11.6364

Triad

The Triadic color harmony groups three colors that are evenly spaced from another and form a triangle on the color wheel.



79.5573, 0.1398, 10.5475



79.5573, -12.1654, 4.6640



79.5573, -0.4809, -2.7963

Complementary

The Complementary color scheme is a pair of colors which are on the opposite of each other on the color wheel.



79.5555, 0.1421, 10.5463



80.3225, -8.0737, -2.1792

Split Complementary

Split-complementary colors differ from the complementary color scheme. The scheme consists of three colors, the original color and two neighbors of the complement color.



79.5573, -4.6003, -3.7415



79.5555, 0.1421, 10.5463



79.5573, -11.2928, 0.6961

Square

The Square scheme is like the rectangle color scheme, but the four colors are evenly spaced on the color wheel.



79.5573, 0.1398, 10.5475



79.5573, -10.9535, 8.3515



79.5573, -8.5452, -2.4326



79.5573, 2.6847, 0.0880

Rectangle

The Rectangle color scheme consists of four colors that form a rectangle on the color wheel.



79.5555, 0.1421, 10.5463



79.5573, -6.6667, 11.3206



79.5573, -8.5452, -2.4326



79.5573, -1.8025, -3.3577

Sweetspot

The Sweet Spot groups the original color and five complimentary colors.



79.5573, 0.1398, 10.5475



97.5955, -3.6324, 7.6912



77.1579, 8.3676, -0.7851



44.9445, -1.5294, 3.7519

0.0000, NaN, NaN



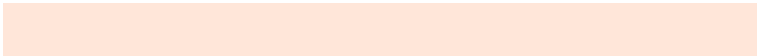
46.2646, -2.4686, 2.5136

Same Dimension

The Same Dimension uses a secret algorithm to generate beautiful new colors.



79.5573, 0.1398, 10.5475



91.1495, 1.3540, 13.5999



83.7781, -6.9235, 14.9632



38.0762, -0.5048, 4.2901



35.7272, 35.7185, 22.6403



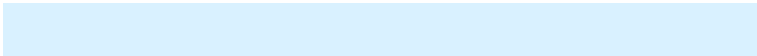
10.2468, 7.2497, 6.4410

Inverse Universe

The Inverse Universe completely reimagines the original color for something new.



80.3225, -8.0737, -2.1792



92.2181, -10.1216, -4.1792



76.0721, -1.0317, -7.5542



38.3476, -3.4162, -0.2214



38.6805, -4.2563, -39.1592



10.9745, -2.3473, -8.6501

Previews

White Background



This preview shows how the HunterLab color 79.5555, 0.1421, 10.5463 looks on a white background.

Color Contrast Check

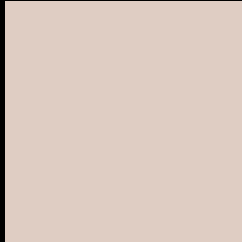
Large Text (above 18pt) WCAG AA × Fail

Any Text WCAG AA × Fail

Large Text (above 18pt) WCAG AAA × Fail

Any Text WCAG AAA × Fail

Black Background



This preview shows how the HunterLab color 79.5555, 0.1421, 10.5463 looks on a black background.

Color Contrast Check

Large Text (above 18pt) WCAG AA ✓ Pass

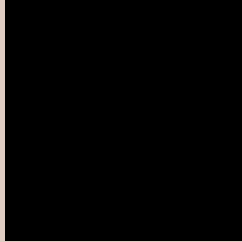
Any Text WCAG AA ✓ Pass

Large Text (above 18pt) WCAG AAA ✓ Pass

Any Text WCAG AAA ✓ Pass

If you want to check with other color combinations, try the [Color Contrast Checker](#).

HunterLab 79.5555, 0.1421, 10.5463 Background



This preview shows how black text looks on a background with the HunterLab color 79.5555, 0.1421, 10.5463.

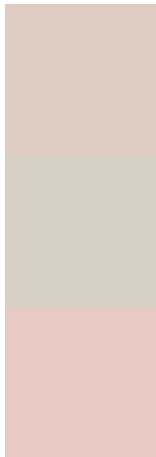


This preview shows how white text looks on a background with the HunterLab color 79.5555, 0.1421,

Color Blindness Simulation

Color vision deficiency is a very complex topic, and I could not describe the different causes any better than Wikipedia does, so if you want to learn more, you should check out their [article about color blindness](#).

Dichromacy



Original Color

79.5555, 0.1421, 10.5463

Protanopia

79.7147, -3.9284, 10.2076

Deuteranopia

79.4245, 5.8639, 10.0582



Tritanopia

79.6364, 6.3498, 0.3090

Trichromacy



Original Color

79.5555, 0.1421, 10.5463

Protanomaly

79.6973, -2.4214, 10.2148

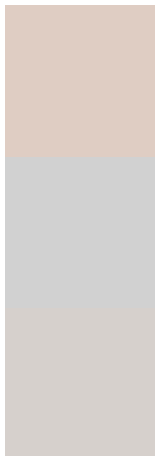
Deuteranomaly

79.2998, 3.9299, 9.8863

Tritanomaly

79.5757, 4.1154, 4.1620

Monochromacy



Original Color

79.5555, 0.1421, 10.5463

Achromatopsia

79.8497, -4.2606, 4.3384

Achromatomaly

79.8546, -2.9745, 6.7388

CSS Examples

Text

The CSS property to change the color of the text to HunterLab 79.5555, 0.1421, 10.5463 is called "color". The color property can be set on classes, ids or directly on the HTML element.

This example shows how text in the color `rgb(223, 205, 195)` looks like.

```
.text, #text, p{  
    color:rgb(223, 205, 195)  
}
```

If you want to add a text shadow in that color use the text-shadow property, you can generate a text shadow directly with our [CSS Text Shadow Generator](#).

Here you see how black text with a 4 pixel rgb(223, 205, 195) colored shadow looks like.

```
.shadow{ text-shadow: 4px 4px 2px rgb(223, 205, 195) }
```

Border

The CSS property to change the border of an element to HunterLab 79.5555, 0.1421, 10.5463 is called "border". The border property can be set on classes, ids or directly on the HTML element.

This example shows the color as border, it can be applied via the CSS property "border" or "border-color".

```
.border, #border, table{ border:4px solid rgb(223, 205, 195) }
```


If only the border color should be changed use the property `border-color`.

```
.border{ border-color:rgb(223, 205, 195) }
```

If you want to add a box shadow in that color use:

Here you see how a box with a 4 pixel `rgb(223, 205, 195)` colored shadow looks like.

```
.boxshadow{ -moz-box-shadow:4px 4px 4px  
4px rgb(223, 205, 195); -webkit-box-  
shadow:4px 4px 4px 4px rgb(223, 205, 195);  
box-shadow:4px 4px 4px 4px rgb(223, 205,  
195) }
```

Background

The CSS property to change the background color of an element to HunterLab 79.5555, 0.1421, 10.5463 is called "background". The background property can be set on classes, ids or directly on the HTML element.

```
.background, #background, body{  
background: rgb(223, 205, 195) }
```

If only the background color should be changed can be used:

```
.background{ background-color: rgb(223,  
205, 195) }
```

This example shows the color as background, it is applied via the CSS property "background".

To optimize and compress your CSS code, you can use our [online CSS compressor and optimizer](#) based on csstidy. If you want to create a linear or radial gradient as background or border, check our [CSS Gradient Generator](#).

Hey! You found this booklet interesting? Support Converting Colors with the new Membership Option!

The pro membership hides all ads, plus gives you double the colors in the color bucket, and more awesome pro features!

[Learn more, Memberships starting at \\$2.50/m!](#)

**Follow me
on Twitter!**

@ConvertingColor