

# Converting Colors

HunterLab(79.5539, 3.8170,  
17.6968)

Have a look what the booklet for  
HunterLab(79.5539, 3.8170,  
17.6968) contains.

<b>HunterLab(79.5539, 3.8170, 17.6968)</b> .....	3
<b><i>Conversions</i></b> .....	4
<b><i>Details</i></b> .....	6
<b><i>Harmonies</i></b> .....	12
<b><i>Previews</i></b> .....	24
<b><i>Color Blindness Simulation</i></b> .....	28
<b><i>CSS Examples</i></b> .....	31

# Color

**HunterLab(79.5539, 3.8170,  
17.6968)**

# Conversions

## Conversions Part 1

Format	Color
Hex	ECCAB2
RGB	236, 202, 178
RGB Percent	93%, 79%, 70%
CMY	0.0745, 0.2078, 0.3020
CMYK	0.00, 0.14, 0.25, 0.07
HSL	25°, 60%, 81%
HSV	25°, 25%, 93%
XYZ	63.7484, 63.2882, 50.9753
YIQ	209.4300, 27.9680, -0.2560

# Conversions

## Conversions Part 2

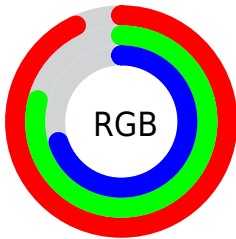
<b>Format</b>	<b>Color</b>
R <sub>Y</sub> B	236, 219, 178
Decimal	15518386
CIE Lab	83.60, 8.38, 16.42
CIE LCh	84, 18.434, 62.948
Yxy	63.2911, 0.3581, 0.3555
Android (android.graphics.Color)	4293708466 (0xFFECCAB2)
YUV	209.4300, -15.4950, 23.3019
Hunter-Lab	79.5539, 3.8170, 17.6968

# Details

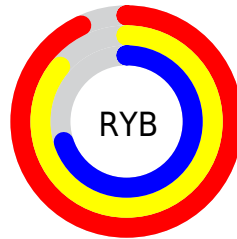
The HunterLab color **79.5539, 3.8170, 17.6968** is a light color, and the websafe version is hex **FFCCCC**. A complement of this color would be **79.1241, -9.7805, -10.8799**, and the grayscale version is **80.0919, -4.2735, 4.3515**.

A 20% lighter version of the original color is **99.3582, -8.8632, 14.6183**, and **56.7840, 3.9924, 14.8016** is the 20% darker color. If you saturate the color by 10%, you get **74.9799, 8.0016, 22.0290**, and if you desaturate by 10%, it is **84.3251, 0.0152, 12.8469**.

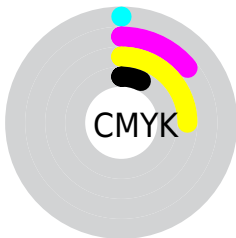
# Distribution



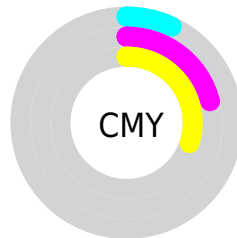
- Red (93%)
- Green (79%)
- Blue (70%)



- Red (93%)
- Yellow (86%)
- Blue (70%)



- Cyan (0%)
- Magenta (14%)
- Yellow (25%)
- Black (7%)



- Cyan (7%)
- Magenta (21%)
- Yellow (30%)

# Brightness & Saturation Gradients

These gradients show how the HunterLab color 79.5539, 3.8170, 17.6968 changes by changing the brightness by 10 percent. The first figure shows a shift by +10% for each color and the second figure -10%.

Similar to the brightness gradients but the following saturation gradients show a change of the HunterLab color 79.5539, 3.8170, 17.6968 by changing the saturation by 10% instead.



79.5539, 3.8170,  
17.6968

79.5539, 3.8170,  
17.6968

208.9558, -0.1373,  
30.6952

67.8799, 4.0390,  
16.2345

104.6850, 3.2161,  
20.5897

56.8387, 4.2079,  
14.7504

118.0856, 2.8498,  
22.0271

46.4711, 4.3150,  
13.2357

132.0138, 2.4424,  
23.4634

36.8240, 4.3522,  
11.6758

146.4502, 1.9964,  
24.9009

27.9559, 4.3090,  
10.0488

161.3776, 1.5137,  
26.3414

19.9425, 4.1700,  
8.3192

176.7803, 0.9962,

12.8869, 3.9120,

27.7865

6.7620

192.6440, 0.4454,  
29.2375

6.3089, 5.4537,  
4.4162

0.0000, NaN, NaN

79.5539, 3.8170,  
17.6968

79.5539, 3.8170,  
17.6968

74.9799, 8.0016,  
22.0290

84.3251, 0.0152,  
12.8469

70.6188, 12.6007,  
25.7668

89.2697, -3.4245,  
7.5405

66.4958, 17.6253,  
28.8308

94.3732, -6.5351,  
1.8345

62.6366, 23.0718,  
31.1382

98.2715, -11.4018,  
3.2753

■ 59.0688, 28.9098,  
32.6129

■ 55.8202, 35.0697,  
33.2029

■ 52.9159, 41.4287,  
32.9127

■ 51.4855, 44.8689,  
32.5106

# Harmonies

## Analogous

The Analogous color harmony consists of three colors that are next to each other on the color wheel.



79.5557, 10.8743, 12.8115



79.5539, 3.8170, 17.6968



79.5557, -5.1414, 19.1415

# Triad

The Triadic color harmony groups three colors that are evenly spaced from another and form a triangle on the color wheel.



79.5557, 3.8143, 17.6980



79.5557, -20.8801, 3.4750



79.5557, 5.4304, -10.8379

# Complementary

The Complementary color scheme is a pair of colors which are on the opposite of each other on the color wheel.



79.5539, 3.8170, 17.6968



79.1241, -9.7805, -10.8799

# Split Complementary

Split-complementary colors differ from the complementary color scheme. The scheme consists of three colors, the original color and two neighbors of the complement color.



79.5557, -3.3529, -14.0227



79.5539, 3.8170, 17.6968



79.5557, -18.3210, -5.2012

# Square

The Square scheme is like the rectangle color scheme, but the four colors are evenly spaced on the color wheel.



79.5557, 3.8143, 17.6980



79.5557, -19.1501, 11.4918



79.5557, -12.0037, -11.8539



79.5557, 11.8363, -3.5655



# Rectangle

The Rectangle color scheme consists of four colors that form a rectangle on the color wheel.



79.5539, 3.8170, 17.6968



79.5557, -10.9158, 18.1059



79.5557, -12.0037, -11.8539



79.5557, 2.6445, -12.4566

# Sweetspot

The Sweet Spot groups the original color and five complimentary colors.



79.5557, 3.8143, 17.6980



96.1294, -2.8521, 9.6973



73.8026, 22.0035, -4.6036



44.3213, -1.2166, 4.6519

0.0000, NaN, NaN



46.2646, -2.4686, 2.5136



# Same Dimension

The Same Dimension uses a secret algorithm to generate beautiful new colors.



79.5557, 3.8143, 17.6980



84.5656, 6.1888, 21.5486



88.1775, -10.6221, 25.8272



40.0976, -0.8250, 4.7041



38.5393, 32.5036, 24.3167



11.6273, 7.0906, 7.2888

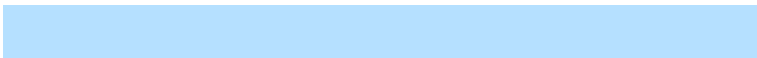


# Inverse Universe

The Inverse Universe completely reimagines the original color for something new.



79.1241, -9.7805, -10.8799



84.0078, -11.2825, -15.2034



70.5123, 4.6963, -23.1957



40.0202, -3.2883, -0.4677



36.9738, 0.5274, -47.3525



11.2358, -1.3059, -11.2247



# Previews

## White Background



This preview shows how the HunterLab color 79.5539, 3.8170, 17.6968 looks on a white background.

## Color Contrast Check

Large Text (above 18pt) WCAG AA × Fail

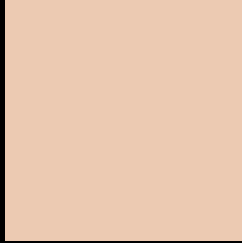
Any Text WCAG AA × Fail

Large Text (above 18pt) WCAG AAA × Fail

Any Text WCAG AAA × Fail



# Black Background



This preview shows how the HunterLab color 79.5539, 3.8170, 17.6968 looks on a black background.

## Color Contrast Check

Large Text (above 18pt) WCAG AA ✓ Pass

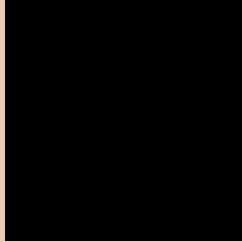
Any Text WCAG AA ✓ Pass

Large Text (above 18pt) WCAG AAA ✓ Pass

Any Text WCAG AAA ✓ Pass

If you want to check with other color combinations, try the [Color Contrast Checker](#).

## HunterLab 79.5539, 3.8170, 17.6968 Background



This preview shows how black text looks on a background with the HunterLab color 79.5539, 3.8170, 17.6968.



This preview shows how white text looks on a background with the HunterLab color 79.5539, 3.8170,

17.6968.

# Color Blindness Simulation

Color vision deficiency is a very complex topic, and I could not describe the different causes any better than Wikipedia does, so if you want to learn more, you should check out their [article about color blindness](#).

## Dichromacy



### Original Color

79.5539, 3.8170, 17.6968

### Protanopia

79.6919, -4.8224, 16.4970

### Deuteranopia

79.5854, 5.4338, 17.7569



## Tritanopia

79.5055, 13.0516, 2.7696

# Trichromacy



**Original Color**

79.5539, 3.8170, 17.6968

**Protanomaly**

79.6527, -1.8837, 16.9073

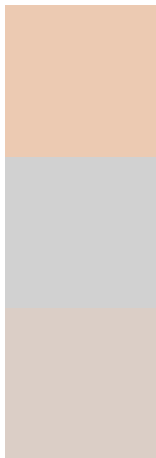
**Deuteranomaly**

79.4763, 5.0672, 17.6401

**Tritanomaly**

79.6038, 9.6873, 8.5218

# Monochromacy



**Original Color**

79.5539, 3.8170, 17.6968

**Achromatopsia**

79.8497, -4.2606, 4.3384

**Achromatomaly**

79.5487, -1.2596, 9.1754

# CSS Examples

## Text

The CSS property to change the color of the text to HunterLab 79.5539, 3.8170, 17.6968 is called "color". The color property can be set on classes, ids or directly on the HTML element.

This example shows how text in the color `rgb(236, 202, 178)` looks like.

```
.text, #text, p{  
    color:rgb(236, 202, 178)  
}
```

If you want to add a text shadow in that color use the text-shadow property, you can generate a text shadow directly with our [CSS Text Shadow Generator](#).

Here you see how black text with a 4 pixel rgb(236, 202, 178) colored shadow looks like.

```
.shadow{ text-shadow: 4px 4px 2px rgb(236, 202, 178) }
```

## Border

The CSS property to change the border of an element to HunterLab 79.5539, 3.8170, 17.6968 is called "border". The border property can be set on classes, ids or directly on the HTML element.

This example shows the color as border, it can be applied via the CSS property "border" or "border-color".

```
.border, #border, table{ border:4px solid rgb(236, 202, 178) }
```



If only the border color should be changed use the property `border-color`.

```
.border{ border-color:rgb(236, 202, 178) }
```

If you want to add a box shadow in that color use:

Here you see how a box with a 4 pixel `rgb(236, 202, 178)` colored shadow looks like.

```
.boxshadow{ -moz-box-shadow:4px 4px 4px 4px rgb(236, 202, 178); -webkit-box-shadow:4px 4px 4px 4px rgb(236, 202, 178); box-shadow:4px 4px 4px 4px rgb(236, 202, 178) }
```

# Background

The CSS property to change the background color of an element to HunterLab 79.5539, 3.8170, 17.6968 is called "background". The background property can be set on classes, ids or directly on the HTML element.

```
.background, #background, body{  
background: rgb(236, 202, 178) }
```

If only the background color should be changed can be used:

```
.background{ background-color: rgb(236,  
202, 178) }
```

This example shows the color as background, it is applied via the CSS property "background".

To optimize and compress your CSS code, you can use our [online CSS compressor and optimizer](#) based on csstidy. If you want to create a linear or radial gradient as background or border, check our [CSS Gradient Generator](#).

Hey! You found this booklet interesting? Support Converting Colors with the new Membership Option!

The pro membership hides all ads, plus gives you double the colors in the color bucket, and more awesome pro features!

**[Learn more, Memberships starting at \\$2.50/m!](#)**

**Follow me  
on Twitter!**

@ConvertingColor