

Converting Colors

HunterLab(79.6504, 1.6632,
4.1913)

Have a look what the booklet for
HunterLab(79.6504, 1.6632, 4.1913)
contains.

HunterLab(79.6754, 1.3849, 4.2319)	3
<i>Conversions</i>	4
<i>Details</i>	6
<i>Harmonies</i>	12
<i>Previews</i>	24
<i>Color Blindness Simulation</i>	28
<i>CSS Examples</i>	31

Color

**HunterLab(79.6754, 1.3849,
4.2319)**

Conversions

Conversions Part 1

Format	Color
Hex	DCCDD1
RGB	220, 205, 209
RGB Percent	86%, 80%, 82%
CMY	0.1373, 0.1961, 0.1804
CMYK	0.00, 0.07, 0.05, 0.14
HSL	344°, 18%, 83%
HSV	344°, 7%, 86%
XYZ	62.8551, 63.4817, 69.2619
YIQ	209.9410, 7.6560, 4.4240

Conversions

Conversions Part 2

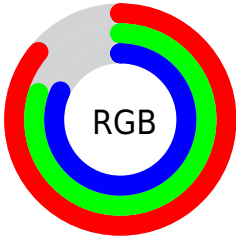
Format	Color
R _Y B	220, 205, 209
Decimal	14470609
CIE Lab	83.70, 5.89, -0.12
CIE LCh	84, 5.895, 358.877
Yxy	63.4845, 0.3213, 0.3246
Android (android.graphics.Color)	4292660689 (0xFFDCCDD1)
YUV	209.9410, -0.4639, 8.8217
Hunter-Lab	79.6754, 1.3849, 4.2319

Details

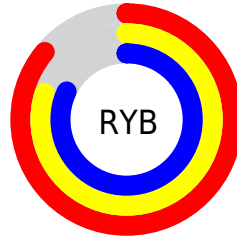
The HunterLab color $79.6754, 1.3849, 4.2319$ is a light color, and the websafe version is hex `CCCCCC`. A complement of this color would be $83.1415, -9.8814, 4.7275$, and the grayscale version is $80.2552, -4.2822, 4.3604$.

A 20% lighter version of the original color is $100.0000, -5.3358, 5.4332$, and $57.0080, 1.9982, 2.9114$ is the 20% darker color. If you saturate the color by 10%, you get $72.7524, 10.2295, 3.9573$, and if you desaturate by 10%, it is $86.9487, -7.2319, 4.8087$.

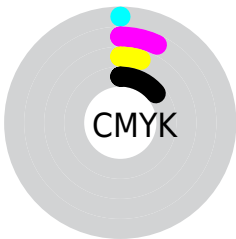
Distribution



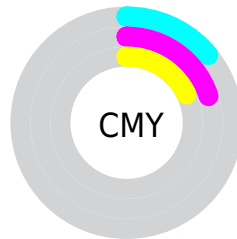
- Red (86%)
- Green (80%)
- Blue (82%)



- Red (86%)
- Yellow (80%)
- Blue (82%)



- Cyan (0%)
- Magenta (7%)
- Yellow (5%)
- Black (14%)



- Cyan (14%)
- Magenta (20%)
- Yellow (18%)

Brightness & Saturation Gradients

These gradients show how the HunterLab color 79.6754, 1.3849, 4.2319 changes by changing the brightness by 10 percent. The first figure shows a shift by +10% for each color and the second figure -10%.

Similar to the brightness gradients but the following saturation gradients show a change of the HunterLab color 79.6754, 1.3849, 4.2319 by changing the saturation by 10% instead.

■ 79.6754, 1.3849,
4.2319

■ 79.6754, 1.3849,
4.2319

209.1233, -3.4421,
11.2400

■ 67.9950, 1.7247,
3.6027

104.8180, 0.5657,
5.5918

■ 56.9473, 2.0169,
3.0070

118.2241, 0.0963,
6.3169

■ 46.5726, 2.2547,
2.4482

132.1575, -0.4103,
7.0708

■ 36.9180, 2.4313,
1.9292

146.5990, -0.9523,
7.8526

■ 28.0416, 2.5381,
1.4530

161.5313, -1.5279,
8.6612

■ 20.0190, 2.5626,
1.0241

176.9387, -2.1356,

■ 12.9531, 2.4856,

9.4958

0.6483

192.8070, -2.7740,
10.3557

6.3972, 3.6728,
0.2733

0.0000, NaN, NaN

79.6754, 1.3849,
4.2319

79.6754, 1.3849,
4.2319

72.7524, 10.2295,
3.9573

86.9487, -7.2319,
4.8087

66.2350, 19.2941,
4.0457

94.5187, -15.6271,
5.6307

60.2007, 28.5097,
4.5731

96.9308, -16.1833,
1.5760

54.7421, 37.7160,
5.6180

■ 49.9679, 46.6073,
7.2449

■ 45.9949, 54.6907,
9.4724

■ 42.9291, 61.3097,
12.2291

■ 40.8320, 65.8087,
15.3199

■ 39.6678, 67.8737,
18.4339

Harmonies

Analogous

The Analogous color harmony consists of three colors that are next to each other on the color wheel.



79.6771, 0.5627, 1.5530



79.6754, 1.3849, 4.2319



79.6771, 0.6743, 6.8505

Triad

The Triadic color harmony groups three colors that are evenly spaced from another and form a triangle on the color wheel.



79.6771, 1.3828, 4.2332



79.6771, -6.9243, 8.8331



79.6771, -7.1107, -0.3274

Complementary

The Complementary color scheme is a pair of colors which are on the opposite of each other on the color wheel.



79.6754, 1.3849, 4.2319



83.1415, -9.8814, 4.7275

Split Complementary

Split-complementary colors differ from the complementary color scheme. The scheme consists of three colors, the original color and two neighbors of the complement color.



79.6771, -9.0686, 1.7389



79.6754, 1.3849, 4.2319



79.6771, -8.9621, 7.0241

Square

The Square scheme is like the rectangle color scheme, but the four colors are evenly spaced on the color wheel.



79.6771, 1.3828, 4.2332



79.6771, -4.1465, 9.4485



79.6771, -9.7415, 4.4407



79.6771, -4.3647, -1.1373

Rectangle

The Rectangle color scheme consists of four colors that form a rectangle on the color wheel.



79.6754, 1.3849, 4.2319



79.6771, -0.5639, 8.2213



79.6771, -9.7415, 4.4407



79.6771, -7.8814, 0.2469

Sweetspot

The Sweet Spot groups the original color and five complimentary colors.



79.6771, 1.3828, 4.2332



98.2601, -3.2868, 5.2903



79.6441, 1.9780, -1.2957



45.4993, -1.5677, 2.4507

0.0000, NaN, NaN



46.2646, -2.4686, 2.5136

Same Dimension

The Same Dimension uses a secret algorithm to generate beautiful new colors.



79.6771, 1.3828, 4.2332



93.1350, 2.9266, 4.9423



80.6113, -1.0919, 7.1698



36.2053, 1.7089, 1.9211



30.2139, 52.4006, 14.4205



7.7823, 13.6758, 2.3279

Inverse Universe

The Inverse Universe completely reimagines the original color for something new.



79.6771, 1.3828, 4.2332



93.1350, 2.9266, 4.9423



82.1685, -7.4108, 1.6442



36.2053, 1.7089, 1.9211



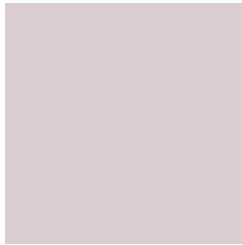
30.2139, 52.4006, 14.4205



7.7823, 13.6758, 2.3279

Previews

White Background



This preview shows how the HunterLab color 79.6754, 1.3849, 4.2319 looks on a white background.

Color Contrast Check

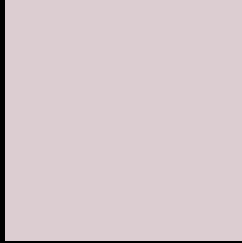
Large Text (above 18pt) WCAG AA × Fail

Any Text WCAG AA × Fail

Large Text (above 18pt) WCAG AAA × Fail

Any Text WCAG AAA × Fail

Black Background



This preview shows how the HunterLab color 79.6754, 1.3849, 4.2319 looks on a black background.

Color Contrast Check

Large Text (above 18pt) WCAG AA ✓ Pass

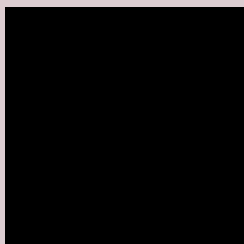
Any Text WCAG AA ✓ Pass

Large Text (above 18pt) WCAG AAA ✓ Pass

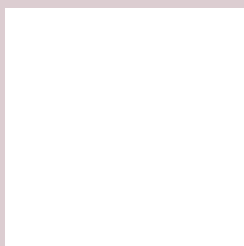
Any Text WCAG AAA ✓ Pass

If you want to check with other color combinations, try the [Color Contrast Checker](#).

HunterLab 79.6754, 1.3849, 4.2319 Background



This preview shows how black text looks on a background with the HunterLab color 79.6754, 1.3849, 4.2319.



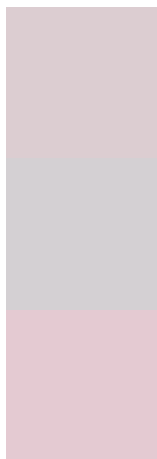
This preview shows how white text looks on a background with the HunterLab color 79.6754, 1.3849,

4.2319.

Color Blindness Simulation

Color vision deficiency is a very complex topic, and I could not describe the different causes any better than Wikipedia does, so if you want to learn more, you should check out their [article about color blindness](#).

Dichromacy



Original Color

79.6754, 1.3849, 4.2319

Protanopia

79.8824, -2.4482, 3.4390

Deuteranopia

79.6167, 5.8359, 3.7556



Tritanopia

79.4975, 4.4943, -0.9179

Trichromacy



Original Color

79.6754, 1.3849, 4.2319

Protanomaly

79.8285, -1.1322, 3.8846

Deuteranomaly

79.6069, 4.2831, 3.7168

Tritanomaly

79.6644, 3.2660, 1.2984

Monochromacy



Original Color

79.6754, 1.3849, 4.2319

Achromatopsia

80.2795, -4.2835, 4.3617

Achromatomaly

80.0381, -1.9729, 4.1177

CSS Examples

Text

The CSS property to change the color of the text to HunterLab 79.6754, 1.3849, 4.2319 is called "color". The color property can be set on classes, ids or directly on the HTML element.

This example shows how text in the color `rgb(220, 205, 209)` looks like.

```
.text, #text, p{  
    color:rgb(220, 205, 209)  
}
```

If you want to add a text shadow in that color use the text-shadow property, you can generate a text shadow directly with our [CSS Text Shadow Generator](#).

Here you see how black text with a 4 pixel rgb(220, 205, 209) colored shadow looks like.

```
.shadow{ text-shadow: 4px 4px 2px rgb(220, 205, 209) }
```

Border

The CSS property to change the border of an element to HunterLab 79.6754, 1.3849, 4.2319 is called "border". The border property can be set on classes, ids or directly on the HTML element.

This example shows the color as border, it can be applied via the CSS property "border" or "border-color".

```
.border, #border, table{ border:4px solid rgb(220, 205, 209) }
```


If only the border color should be changed use the property `border-color`.

```
.border{ border-color:rgb(220, 205, 209) }
```

If you want to add a box shadow in that color use:

Here you see how a box with a 4 pixel `rgb(220, 205, 209)` colored shadow looks like.

```
.boxshadow{ -moz-box-shadow:4px 4px 4px  
4px rgb(220, 205, 209); -webkit-box-  
shadow:4px 4px 4px 4px rgb(220, 205, 209);  
box-shadow:4px 4px 4px 4px rgb(220, 205,  
209) }
```

Background

The CSS property to change the background color of an element to HunterLab 79.6754, 1.3849, 4.2319 is called "background". The background property can be set on classes, ids or directly on the HTML element.

```
.background, #background, body{  
background: rgb(220, 205, 209) }
```

If only the background color should be changed can be used:

```
.background{ background-color: rgb(220,  
205, 209) }
```

This example shows the color as background, it is applied via the CSS property "background".

To optimize and compress your CSS code, you can use our [online CSS compressor and optimizer](#) based on csstidy. If you want to create a linear or radial gradient as background or border, check our [CSS Gradient Generator](#).

Hey! You found this booklet interesting? Support Converting Colors with the new Membership Option!

The pro membership hides all ads, plus gives you double the colors in the color bucket, and more awesome pro features!

[Learn more, Memberships starting at \\$2.50/m!](#)

**Follow me
on Twitter!**

@ConvertingColor