

Converting Colors

HunterLab(79.6841, 1.4466,
17.1224)

Have a look what the booklet for
HunterLab(79.6841, 1.4466,
17.1224) contains.

HunterLab(79.7727, 1.6128, 17.0908)	3
<i>Conversions</i>	4
<i>Details</i>	6
<i>Harmonies</i>	12
<i>Previews</i>	24
<i>Color Blindness Simulation</i>	28
<i>CSS Examples</i>	31

Color

**HunterLab(79.7727, 1.6128,
17.0908)**

Conversions

Conversions Part 1

Format	Color
Hex	E8CCB4
RGB	232, 204, 180
RGB Percent	91%, 80%, 71%
CMY	0.0902, 0.2000, 0.2941
CMYK	0.00, 0.12, 0.22, 0.09
HSL	28°, 53%, 81%
HSV	28°, 22%, 91%
XYZ	63.1098, 63.6368, 52.1369
YIQ	209.6360, 24.3920, -1.5280

Conversions

Conversions Part 2

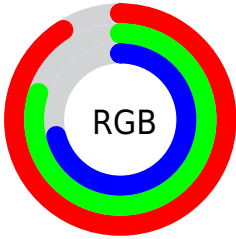
Format	Color
R _Y B	232, 225, 180
Decimal	15256756
CIE Lab	83.78, 6.13, 15.56
CIE LCh	84, 16.726, 68.497
Yxy	63.6397, 0.3528, 0.3557
Android (android.graphics.Color)	4293446836 (0xFFE8CCB4)
YUV	209.6360, -14.6105, 19.6132
Hunter-Lab	79.7727, 1.6128, 17.0908

Details

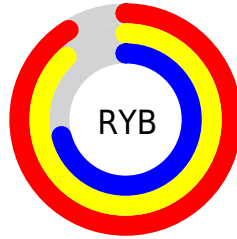
The HunterLab color **79.7727, 1.6128, 17.0908** is a light color, and the websafe version is hex **FFCCCC**. A complement of this color would be **77.8715, -8.0398, -10.2839**, and the grayscale version is **80.1779, -4.2781, 4.3562**.

A 20% lighter version of the original color is **99.4164, -8.5426, 13.7834**, and **57.0746, 2.2056, 14.3497** is the 20% darker color. If you saturate the color by 10%, you get **75.5449, 5.0563, 21.6738**, and if you desaturate by 10%, it is **84.1687, -1.4610, 11.9503**.

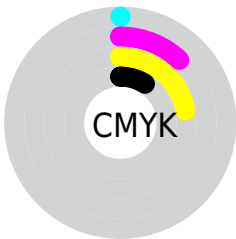
Distribution



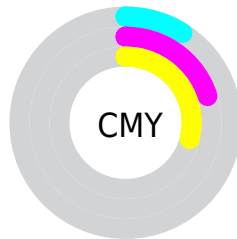
- Red (91%)
- Green (80%)
- Blue (71%)



- Red (91%)
- Yellow (88%)
- Blue (71%)



- Cyan (0%)
- Magenta (12%)
- Yellow (22%)
- Black (9%)



- Cyan (9%)
- Magenta (20%)
- Yellow (29%)

Brightness & Saturation Gradients

These gradients show how the HunterLab color 79.7727, 1.6128, 17.0908 changes by changing the brightness by 10 percent. The first figure shows a shift by +10% for each color and the second figure -10%.

Similar to the brightness gradients but the following saturation gradients show a change of the HunterLab color 79.7727, 1.6128, 17.0908 by changing the saturation by 10% instead.

 79.7727, 1.6128,
17.0908

 79.7727, 1.6128,
17.0908

209.2576, -3.1340,
29.7627

 68.0874, 1.9413,
15.6750


 104.9247, 0.8133,
19.8989

 57.0343, 2.2222,
14.2408


118.3352, 0.3534,
21.2973

 46.6540, 2.4479,
12.7803


132.2728, -0.1441,
22.6964

 36.9933, 2.6118,
11.2800

146.7183, -0.6772,
24.0982

 28.1104, 2.7048,
9.7197

161.6545, -1.2442,
25.5045

 20.0805, 2.7144,
8.0665

177.0657, -1.8435,

 13.0063, 2.6208,

26.9166

6.4931

192.9378, -2.4739,
28.3357

■ 6.4671, 3.7856,
4.5269

0.0000, NaN, NaN

■ 79.7727, 1.6128,
17.0908

■ 79.7727, 1.6128,
17.0908

■ 75.5449, 5.0563,
21.6738

■ 84.1687, -1.4610,
11.9503

■ 71.4957, 8.9014,
25.6279

■ 88.7130, -4.1848,
6.3102

■ 67.6445, 13.1633,
28.8821

■ 93.3950, -6.5890,
0.2261

■ 64.0103, 17.8487,
31.3634

■ 97.5902, -12.0918,
2.4449

■ 60.6133, 22.9462,
33.0065

■ 97.9265, -12.6260,
2.8401

■ 57.4735, 28.4181,
33.7670

■ 54.6093, 34.1890,
33.6456

■ 52.6229, 38.6630,
33.1028

Harmonies

Analogous

The Analogous color harmony consists of three colors that are next to each other on the color wheel.



79.7745, 8.4776, 13.1381



79.7727, 1.6128, 17.0908



79.7745, -6.5806, 17.8159

Triad

The Triadic color harmony groups three colors that are evenly spaced from another and form a triangle on the color wheel.



79.7745, 1.6102, 17.0920



79.7745, -19.2852, 2.0909



79.7745, 5.8082, -8.3312

Complementary

The Complementary color scheme is a pair of colors which are on the opposite of each other on the color wheel.



79.7727, 1.6128, 17.0908



77.8715, -8.0398, -10.2839

Split Complementary

Split-complementary colors differ from the complementary color scheme. The scheme consists of three colors, the original color and two neighbors of the complement color.



79.7745, -1.9143, -11.9884



79.7727, 1.6128, 17.0908



79.7745, -16.2470, -5.5852

Square

The Square scheme is like the rectangle color scheme, but the four colors are evenly spaced on the color wheel.



79.7745, 1.6102, 17.0920



79.7745, -18.4273, 9.6546



79.7745, -9.9669, -10.9357



79.7745, 10.9688, -1.3623

Rectangle

The Rectangle color scheme consists of four colors that form a rectangle on the color wheel.



79.7727, 1.6128, 17.0908



79.7745, -11.6558, 16.4478



79.7745, -9.9669, -10.9357



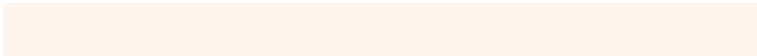
79.7745, 3.4137, -10.0191

Sweetspot

The Sweet Spot groups the original color and five complimentary colors.



79.7745, 1.6102, 17.0920



96.3972, -3.3029, 9.9920



73.7447, 18.7427, -2.5208



44.4557, -1.4431, 4.7992

0.0000, NaN, NaN



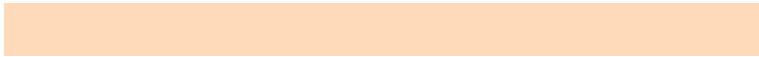
46.2646, -2.4686, 2.5136

Same Dimension

The Same Dimension uses a secret algorithm to generate beautiful new colors.



79.7745, 1.6102, 17.0920



86.5561, 3.5518, 21.5196



87.5853, -11.3316, 24.5404



39.3178, -1.0592, 4.7494



39.5214, 28.0455, 24.8439



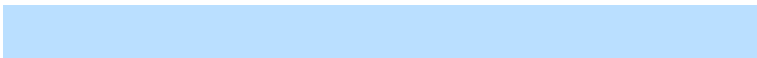
11.5689, 5.7148, 7.2287

Inverse Universe

The Inverse Universe completely reimagines the original color for something new.



77.8715, -8.0398, -10.2839



84.0055, -9.3573, -15.1729



70.1659, 5.0181, -21.1870



38.9436, -2.9626, -0.6340



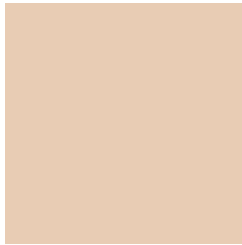
34.0858, 4.6479, -52.6378



10.2177, -0.4105, -11.8850

Previews

White Background



This preview shows how the HunterLab color 79.7727, 1.6128, 17.0908 looks on a white background.

Color Contrast Check

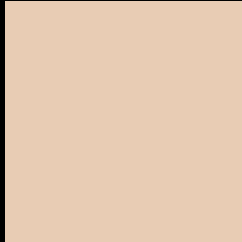
Large Text (above 18pt) WCAG AA × Fail

Any Text WCAG AA × Fail

Large Text (above 18pt) WCAG AAA × Fail

Any Text WCAG AAA × Fail

Black Background



This preview shows how the HunterLab color 79.7727, 1.6128, 17.0908 looks on a black background.

Color Contrast Check

Large Text (above 18pt) WCAG AA ✓ Pass

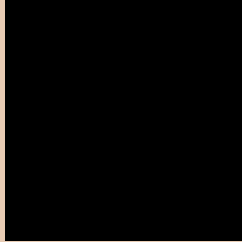
Any Text WCAG AA ✓ Pass

Large Text (above 18pt) WCAG AAA ✓ Pass

Any Text WCAG AAA ✓ Pass

If you want to check with other color combinations, try the [Color Contrast Checker](#).

HunterLab 79.7727, 1.6128, 17.0908 Background



This preview shows how black text looks on a background with the HunterLab color 79.7727, 1.6128, 17.0908.



This preview shows how white text looks on a background with the HunterLab color 79.7727, 1.6128,

Color Blindness Simulation

Color vision deficiency is a very complex topic, and I could not describe the different causes any better than Wikipedia does, so if you want to learn more, you should check out their [article about color blindness](#).

Dichromacy



Original Color

79.7727, 1.6128, 17.0908

Protanopia

79.7178, -4.6806, 16.1244

Deuteranopia

79.6619, 5.8435, 16.6530



Tritanopia

79.7408, 11.0627, 1.5278

Trichromacy



Original Color

79.7727, 1.6128, 17.0908

Protanomaly

79.8806, -2.6015, 16.7290

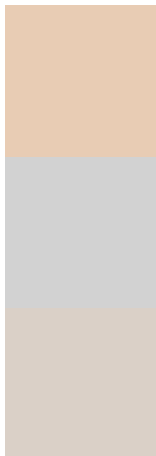
Deuteranomaly

79.6305, 4.2283, 16.5925

Tritanomaly

79.8121, 7.5092, 7.8019

Monochromacy



Original Color

79.7727, 1.6128, 17.0908

Achromatopsia

80.2795, -4.2835, 4.3617

Achromatomaly

80.0879, -2.4626, 9.3055

CSS Examples

Text

The CSS property to change the color of the text to HunterLab 79.7727, 1.6128, 17.0908 is called "color". The color property can be set on classes, ids or directly on the HTML element.

This example shows how text in the color `rgb(232, 204, 180)` looks like.

```
.text, #text, p{  
    color:rgb(232, 204, 180)  
}
```

If you want to add a text shadow in that color use the text-shadow property, you can generate a text shadow directly with our [CSS Text Shadow Generator](#).

Here you see how black text with a 4 pixel rgb(232, 204, 180) colored shadow looks like.

```
.shadow{ text-shadow: 4px 4px 2px rgb(232, 204, 180) }
```

Border

The CSS property to change the border of an element to HunterLab 79.7727, 1.6128, 17.0908 is called "border". The border property can be set on classes, ids or directly on the HTML element.

This example shows the color as border, it can be applied via the CSS property "border" or "border-color".

```
.border, #border, table{ border:4px solid rgb(232, 204, 180) }
```


If only the border color should be changed use the property `border-color`.

```
.border{ border-color:rgb(232, 204, 180) }
```

If you want to add a box shadow in that color use:

Here you see how a box with a 4 pixel `rgb(232, 204, 180)` colored shadow looks like.

```
.boxshadow{ -moz-box-shadow:4px 4px 4px  
4px rgb(232, 204, 180); -webkit-box-  
shadow:4px 4px 4px 4px rgb(232, 204, 180);  
box-shadow:4px 4px 4px 4px rgb(232, 204,  
180) }
```

Background

The CSS property to change the background color of an element to HunterLab 79.7727, 1.6128, 17.0908 is called "background". The background property can be set on classes, ids or directly on the HTML element.

```
.background, #background, body{  
background: rgb(232, 204, 180) }
```

If only the background color should be changed can be used:

```
.background{ background-color: rgb(232,  
204, 180) }
```

This example shows the color as background, it is applied via the CSS property "background".

To optimize and compress your CSS code, you can use our [online CSS compressor and optimizer](#) based on csstidy. If you want to create a linear or radial gradient as background or border, check our [CSS Gradient Generator](#).

Hey! You found this booklet interesting? Support Converting Colors with the new Membership Option!

The pro membership hides all ads, plus gives you double the colors in the color bucket, and more awesome pro features!

[Learn more, Memberships starting at \\$2.50/m!](#)

**Follow me
on Twitter!**

@ConvertingColor