

Converting Colors

HunterLab(79.7262, 39.2782,
30.5255)

Have a look what the booklet for
HunterLab(79.7262, 39.2782,
30.5255) contains.

HunterLab(73.6844, 20.5767, 24.8541)	3
<i>Conversions</i>	4
<i>Details</i>	6
<i>Harmonies</i>	12
<i>Previews</i>	24
<i>Color Blindness Simulation</i>	28
<i>CSS Examples</i>	31

Color

**HunterLab(73.6844, 20.5767,
24.8541)**

Conversions

Conversions Part 1

Format	Color
Hex	FFB08F
RGB	255, 176, 143
RGB Percent	100%, 69%, 56%
CMY	0.0000, 0.3098, 0.4392
CMYK	0.00, 0.31, 0.44, 0.00
HSL	18°, 100%, 78%
HSV	18°, 44%, 100%
XYZ	61.7233, 54.2939, 33.2133
YIQ	195.8590, 57.6770, 6.4850

Conversions

Conversions Part 2

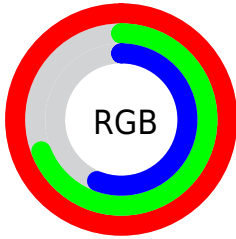
Format	Color
RYB	255, 190, 143
Decimal	16756879
CIELab	78.63, 25.08, 28.53
CIELCh	79, 37.988, 48.679
Yxy	54.2966, 0.4136, 0.3638
Android (android.graphics.Color)	4294946959 (0xFFFFB08F)
YUV	195.8590, -26.0595, 51.8667
Hunter-Lab	73.6844, 20.5767, 24.8541

Details

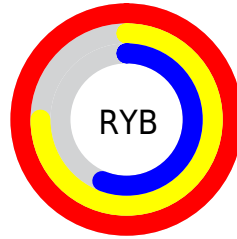
The HunterLab color **73.6844, 20.5767, 24.8541** is a light color, and the websafe version is hex **FFCC99**. A complement of this color would be **80.8081, -18.8230, -19.9508**, and the grayscale version is **74.3290, -3.9660, 4.0384**.

A 20% lighter version of the original color is **91.1068, -2.3555, 21.7222**, and **51.6473, 19.4522, 20.5418** is the 20% darker color. If you saturate the color by 10%, you get **68.5691, 27.6348, 28.0495**, and if you desaturate by 10%, it is **79.1745, 13.9507, 21.1055**.

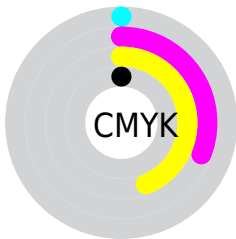
Distribution



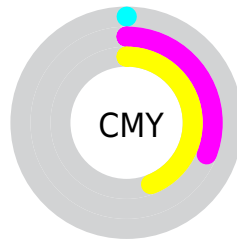
- Red (100%)
- Green (69%)
- Blue (56%)



- Red (100%)
- Yellow (75%)
- Blue (56%)



- Cyan (0%)
- Magenta (31%)
- Yellow (44%)
- Black (0%)




- Cyan (0%)
- Magenta (31%)
- Yellow (44%)

Brightness & Saturation Gradients


These gradients show how the HunterLab color 73.6844, 20.5767, 24.8541 changes by changing the brightness by 10 percent. The first figure shows a shift by +10% for each color and the second figure -10%.


Similar to the brightness gradients but the following saturation gradients show a change of the HunterLab color 73.6844, 20.5767, 24.8541 by changing the saturation by 10% instead.


 73.6844, 20.5767,
24.8541


 73.6844, 20.5767,
24.8541


200.8083, 22.5129,
42.7544

 62.3208, 20.0145,
22.6771


 98.2393, 21.4451,
29.0374

 51.6085, 19.3622,
20.4191


 111.3704, 21.7724,
31.0649

 41.5918, 18.6049,
18.0570


125.0394, 22.0347,
33.0611

 32.3230, 17.7289,
15.5565

139.2259, 22.2366,
35.0323

 23.8680, 16.7178,
12.8681

153.9118, 22.3822,
36.9835

 16.3145, 15.5555,
10.5058

169.0806, 22.4748,

 9.7864, 14.2418,

38.9188

6.8505

184.7173, 22.5175,
40.8415

0.0000, INF, NaN

0.0000, NaN, NaN

■ 73.6844, 20.5767,
24.8541

■ 73.6844, 20.5767,
24.8541

■ 68.5691, 27.6348,
28.0495

■ 79.1745, 13.9507,
21.1055

■ 63.8745, 35.0875,
30.5746

■ 84.9887, 7.7733,
16.8991

■ 59.6581, 42.8192,
32.3108

■ 91.0900, 2.0221,
12.3173

■ 55.9767, 50.6309,
33.1568


■ 97.4451, -3.3349,
7.4248

■ 52.8813, 58.2204,

100.0000, -5.3358,

33.0765

5.4332

 51.2953, 62.5324,
32.7027

Harmonies

Analogous

The Analogous color harmony consists of three colors that are next to each other on the color wheel.



73.6862, 32.1569, 13.8782



73.6844, 20.5767, 24.8541



73.6862, 3.0469, 29.7184

Triad

The Triadic color harmony groups three colors that are evenly spaced from another and form a triangle on the color wheel.



73.6862, 20.5732, 24.8552



73.6862, -35.1512, 10.2397



73.6862, 7.5874, -34.9169

Complementary

The Complementary color scheme is a pair of colors which are on the opposite of each other on the color wheel.



73.6844, 20.5767, 24.8541



80.8081, -18.8230, -19.9508

Split Complementary

Split-complementary colors differ from the complementary color scheme. The scheme consists of three colors, the original color and two neighbors of the complement color.



73.6862, -10.6675, -36.5715



73.6844, 20.5767, 24.8541



73.6862, -34.1901, -7.4432

Square

The Square scheme is like the rectangle color scheme, but the four colors are evenly spaced on the color wheel.



73.6862, 20.5732, 24.8552



73.6862, -28.3750, 22.7493



73.6862, -25.6084, -25.5596



73.6862, 24.1730, -21.4723

Rectangle

The Rectangle color scheme consists of four colors that form a rectangle on the color wheel.



73.6844, 20.5767, 24.8541



73.6862, -9.1324, 29.8764



73.6862, -25.6084, -25.5596



73.6862, 1.4093, -36.9734

Sweetspot

The Sweet Spot groups the original color and five complimentary colors.



73.6862, 20.5732, 24.8552



91.6651, 1.5128, 11.8789



68.0056, 50.0738, -18.2484



41.7724, 1.2672, 5.9798

0.0000, NaN, NaN



46.2646, -2.4686, 2.5136

Same Dimension

The Same Dimension uses a secret algorithm to generate beautiful new colors.



73.6862, 20.5732, 24.8552



69.0235, 26.9670, 27.7815



89.5802, -7.9170, 37.8602



43.4272, -0.1806, 4.7151



37.3794, 44.3261, 23.8090



12.4104, 11.7571, 7.8531

Inverse Universe

The Inverse Universe completely reimagines the original color for something new.



80.8081, -18.8230, -19.9508



77.3893, -19.8301, -25.1418



63.8714, 9.0834, -48.3054



44.1862, -4.3026, -0.0199



45.9019, -10.0196, -35.7440



14.9710, -4.0783, -9.9085

Previews

White Background



This preview shows how the HunterLab color 73.6844, 20.5767, 24.8541 looks on a white background.

Color Contrast Check

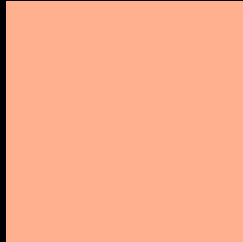
Large Text (above 18pt) WCAG AA × Fail

Any Text WCAG AA × Fail

Large Text (above 18pt) WCAG AAA × Fail

Any Text WCAG AAA × Fail

Black Background



This preview shows how the HunterLab color 73.6844, 20.5767, 24.8541 looks on a black background.

Color Contrast Check

Large Text (above 18pt) WCAG AA ✓ Pass

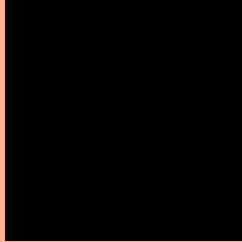
Any Text WCAG AA ✓ Pass

Large Text (above 18pt) WCAG AAA ✓ Pass

Any Text WCAG AAA ✓ Pass

If you want to check with other color combinations, try the [Color Contrast Checker](#).

HunterLab 73.6844, 20.5767, 24.8541 Background



This preview shows how black text looks on a background with the HunterLab color 73.6844, 20.5767, 24.8541.



This preview shows how white text looks on a background with the HunterLab color 73.6844, 20.5767, 24.8541.

Color Blindness Simulation

Color vision deficiency is a very complex topic, and I could not describe the different causes any better than Wikipedia does, so if you want to learn more, you should check out their [article about color blindness](#).

Dichromacy



Original Color

73.6844, 20.5767, 24.8541

Protanopia

73.9422, -6.0085, 21.9812

Deuteranopia

73.7920, 5.1961, 25.3143



Tritanopia

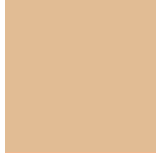
73.6381, 27.8320, 9.3511

Trichromacy



Original Color

73.6844, 20.5767, 24.8541



Protanomaly

73.5609, 3.2243, 22.8027



Deuteranomaly

73.7192, 10.8271, 25.0328



Tritanomaly

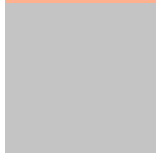
73.4927, 25.2411, 15.4456

Monochromacy



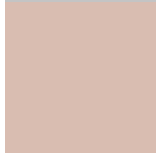
Original Color

73.6844, 20.5767, 24.8541



Achromatopsia

74.2975, -3.9643, 4.0367



Achromatomaly

73.7029, 3.6148, 12.0178

CSS Examples

Text

The CSS property to change the color of the text to HunterLab 73.6844, 20.5767, 24.8541 is called "color". The color property can be set on classes, ids or directly on the HTML element.

This example shows how text in the color `rgb(255, 176, 143)` looks like.

```
.text, #text, p{  
    color:rgb(255, 176, 143)  
}
```

If you want to add a text shadow in that color use the text-shadow property, you can generate a text shadow directly with our [CSS Text Shadow Generator](#).

Here you see how black text with a 4 pixel rgb(255, 176, 143) colored shadow looks like.

```
.shadow{ text-shadow: 4px 4px 2px rgb(255, 176, 143) }
```

Border

The CSS property to change the border of an element to HunterLab 73.6844, 20.5767, 24.8541 is called "border". The border property can be set on classes, ids or directly on the HTML element.

This example shows the color as border, it can be applied via the CSS property "border" or "border-color".

```
.border, #border, table{ border:4px solid rgb(255, 176, 143) }
```


If only the border color should be changed use the property `border-color`.

```
.border{ border-color:rgb(255, 176, 143) }
```

If you want to add a box shadow in that color use:

Here you see how a box with a 4 pixel `rgb(255, 176, 143)` colored shadow looks like.

```
.boxshadow{ -moz-box-shadow:4px 4px 4px  
4px rgb(255, 176, 143); -webkit-box-  
shadow:4px 4px 4px 4px rgb(255, 176, 143);  
box-shadow:4px 4px 4px 4px rgb(255, 176,  
143) }
```

Background

The CSS property to change the background color of an element to HunterLab 73.6844, 20.5767, 24.8541 is called "background". The background property can be set on classes, ids or directly on the HTML element.

```
.background, #background, body{  
background: rgb(255, 176, 143) }
```

If only the background color should be changed can be used:

```
.background{ background-color: rgb(255,  
176, 143) }
```

This example shows the color as background, it is applied via the CSS property "background".

To optimize and compress your CSS code, you can use our [online CSS compressor and optimizer](#) based on csstidy. If you want to create a linear or radial gradient as background or border, check our [CSS Gradient Generator](#).

Hey! You found this booklet interesting? Support Converting Colors with the new Membership Option!

The pro membership hides all ads, plus gives you double the colors in the color bucket, and more awesome pro features!

[Learn more, Memberships starting at \\$2.50/m!](#)

**Follow me
on Twitter!**

@ConvertingColor