

Converting Colors

HunterLab(79.7411, 2.9058,
9.1063)

Have a look what the booklet for
HunterLab(79.7411, 2.9058, 9.1063)
contains.

HunterLab(79.7748, 2.6580, 9.0452)	3
<i>Conversions</i>	4
<i>Details</i>	6
<i>Harmonies</i>	12
<i>Previews</i>	24
<i>Color Blindness Simulation</i>	28
<i>CSS Examples</i>	31

Color

**HunterLab(79.7748, 2.6580,
9.0452)**

Conversions

Conversions Part 1

Format	Color
Hex	E3CCC7
RGB	227, 204, 199
RGB Percent	89%, 80%, 78%
CMY	0.1098, 0.2000, 0.2196
CMYK	0.00, 0.10, 0.12, 0.11
HSL	11°, 33%, 84%
HSV	11°, 12%, 89%
XYZ	63.5802, 63.6402, 62.9657
YIQ	210.3070, 15.3130, 3.3210

Conversions

Conversions Part 2

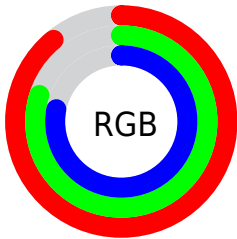
Format	Color
R _Y B	227, 205, 199
Decimal	14929095
CIE Lab	83.78, 7.20, 5.41
CIE LCh	84, 9.007, 36.881
Yxy	63.6430, 0.3343, 0.3346
Android (android.graphics.Color)	4293119175 (0xFFE3CCC7)
YUV	210.3070, -5.5744, 14.6398
Hunter-Lab	79.7748, 2.6580, 9.0452

Details

The HunterLab color $79.7748, 2.6580, 9.0452$ is a light color, and the websafe version is hex `CCCCCC`. A complement of this color would be $83.6238, -10.7131, -0.1853$, and the grayscale version is $80.4316, -4.2916, 4.3700$.

A 20% lighter version of the original color is $100.0000, -5.3358, 5.4332$, and $57.0219, 2.9249, 7.3342$ is the 20% darker color. If you saturate the color by 10%, you get $73.7071, 8.9798, 12.4090$, and if you desaturate by 10%, it is $86.1260, -3.3260, 5.5822$.

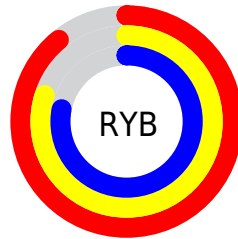
Distribution



Red (89%)

Green (80%)

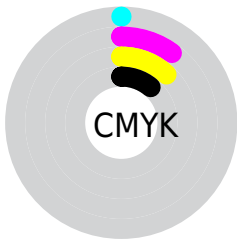
Blue (78%)



Red (89%)

Yellow (80%)

Blue (78%)

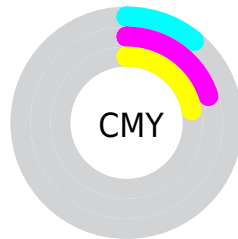


Cyan (0%)

Magenta (10%)

Yellow (12%)

Black (11%)



Cyan (11%)

Magenta (20%)

Yellow (22%)

Brightness & Saturation Gradients

These gradients show how the HunterLab color 79.7748, 2.6580, 9.0452 changes by changing the brightness by 10 percent. The first figure shows a shift by +10% for each color and the second figure -10%.

Similar to the brightness gradients but the following saturation gradients show a change of the HunterLab color 79.7748, 2.6580, 9.0452 by changing the saturation by 10% instead.

■ 79.7748, 2.6580,
9.0452

■ 79.7748, 2.6580,
9.0452

209.2604, -1.7131,
17.9762

■ 68.0893, 2.9363,
8.1526

104.9270, 1.9529,
10.8928

■ 57.0362, 3.1642,
7.2775

118.3375, 1.5373,
11.8457

■ 46.6558, 3.3337,
6.4199

132.2752, 1.0825,
12.8185

■ 36.9949, 3.4376,
5.5780

146.7208, 0.5907,
13.8111

■ 28.1119, 3.4661,
4.7479

161.6571, 0.0636,
14.8233

■ 20.0818, 3.4053,
3.9233

177.0684, -0.4969,

■ 13.0074, 3.2338,

15.8551

3.0909

192.9405, -1.0896,
16.9061

6.4685, 4.5080,
3.8163

0.0000, NaN, NaN

79.7748, 2.6580,
9.0452

79.7748, 2.6580,
9.0452

73.7071, 8.9798,
12.4090

86.1260, -3.3260,
5.5822

67.9599, 15.6695,
15.6308

92.7204, -8.9984,
2.0424

62.5865, 22.7253,
18.6548

97.5044, -14.1294,
2.3058

57.6479, 30.1047,
21.4001

■ 53.2146, 37.6939,
23.7582

■ 49.3633, 45.2755,
25.5967

■ 46.1697, 52.5059,
26.7792

■ 43.6942, 58.9299,
27.2137

■ 42.2933, 62.9719,
27.1634

Harmonies

Analogous

The Analogous color harmony consists of three colors that are next to each other on the color wheel.



79.7766, 4.3584, 5.3056



79.7748, 2.6580, 9.0452



79.7766, -0.8945, 11.4298

Triad

The Triadic color harmony groups three colors that are evenly spaced from another and form a triangle on the color wheel.



79.7766, 2.6557, 9.0465



79.7766, -11.9322, 7.4538



79.7766, -3.2395, -4.1134

Complementary

The Complementary color scheme is a pair of colors which are on the opposite of each other on the color wheel.



79.7748, 2.6580, 9.0452



83.6238, -10.7131, -0.1853

Split Complementary

Split-complementary colors differ from the complementary color scheme. The scheme consists of three colors, the original color and two neighbors of the complement color.



79.7766, -7.5725, -3.4614



79.7748, 2.6580, 9.0452



79.7766, -12.5292, 3.3671

Square

The Square scheme is like the rectangle color scheme, but the four colors are evenly spaced on the color wheel.



79.7766, 2.6557, 9.0465



79.7766, -9.3007, 10.5459



79.7766, -10.9497, -0.6667



79.7766, 0.9071, -2.4029

Rectangle

The Rectangle color scheme consists of four colors that form a rectangle on the color wheel.



79.7748, 2.6580, 9.0452



79.7766, -3.7978, 12.0050



79.7766, -10.9497, -0.6667



79.7766, -4.7231, -4.1647

Sweetspot

The Sweet Spot groups the original color and five complimentary colors.



79.7766, 2.6557, 9.0465



97.0214, -2.6664, 7.0444



79.0383, 9.2294, -3.1521



44.6297, -0.9984, 3.3985

0.0000, NaN, NaN



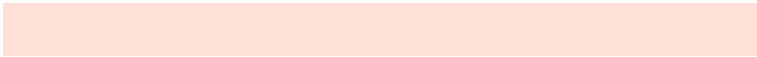
46.2646, -2.4686, 2.5136

Same Dimension

The Same Dimension uses a secret algorithm to generate beautiful new colors.



79.7766, 2.6557, 9.0465



89.0762, 4.9826, 11.3946



83.9198, -4.4056, 13.4585



38.4478, 0.4258, 3.7990



32.4837, 47.4985, 20.8479



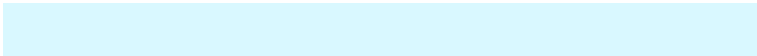
9.4956, 10.9063, 6.0421

Inverse Universe

The Inverse Universe completely reimagines the original color for something new.



83.6238, -10.7131, -0.1853



94.4294, -13.6326, -1.4537



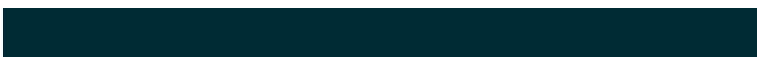
79.3496, -3.7625, -5.4728



39.8436, -4.4218, 0.4502



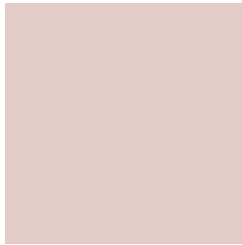
48.9667, -18.4075, -21.4677



13.7362, -5.5668, -5.1519

Previews

White Background



This preview shows how the HunterLab color 79.7748, 2.6580, 9.0452 looks on a white background.

Color Contrast Check

Large Text (above 18pt) WCAG AA × Fail

Any Text WCAG AA × Fail

Large Text (above 18pt) WCAG AAA × Fail

Any Text WCAG AAA × Fail

Black Background



This preview shows how the HunterLab color 79.7748, 2.6580, 9.0452 looks on a black background.

Color Contrast Check

Large Text (above 18pt) WCAG AA ✓ Pass

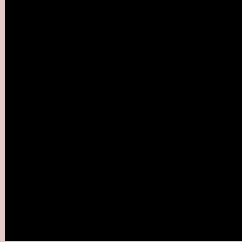
Any Text WCAG AA ✓ Pass

Large Text (above 18pt) WCAG AAA ✓ Pass

Any Text WCAG AAA ✓ Pass

If you want to check with other color combinations, try the [Color Contrast Checker](#).

HunterLab 79.7748, 2.6580, 9.0452 Background



This preview shows how black text looks on a background with the HunterLab color 79.7748, 2.6580, 9.0452.



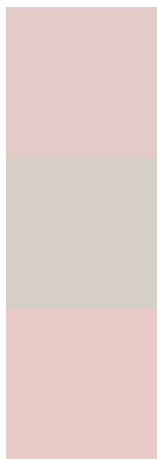
This preview shows how white text looks on a background with the HunterLab color 79.7748, 2.6580,

9.0452.

Color Blindness Simulation

Color vision deficiency is a very complex topic, and I could not describe the different causes any better than Wikipedia does, so if you want to learn more, you should check out their [article about color blindness](#).

Dichromacy



Original Color

79.7748, 2.6580, 9.0452

Protanopia

79.7652, -3.4627, 8.0165

Deuteranopia

79.8049, 5.8024, 9.1340



Tritanopia

79.6499, 7.9042, 0.3528

Trichromacy



Original Color

79.7748, 2.6580, 9.0452

Protanomaly

79.9099, -1.4569, 8.6712

Deuteranomaly

79.8901, 4.5734, 9.2078

Tritanomaly

79.6167, 5.8359, 3.7556

Monochromacy



Original Color

79.7748, 2.6580, 9.0452

Achromatopsia

80.2795, -4.2835, 4.3617

Achromatomaly

80.1043, -1.9908, 6.1052

CSS Examples

Text

The CSS property to change the color of the text to HunterLab 79.7748, 2.6580, 9.0452 is called "color". The color property can be set on classes, ids or directly on the HTML element.

This example shows how text in the color `rgb(227, 204, 199)` looks like.

```
.text, #text, p{  
    color:rgb(227, 204, 199)  
}
```

If you want to add a text shadow in that color use the text-shadow property, you can generate a text shadow directly with our [CSS Text Shadow Generator](#).

Here you see how black text with a 4 pixel rgb(227, 204, 199) colored shadow looks like.

```
.shadow{ text-shadow: 4px 4px 2px rgb(227, 204, 199) }
```

Border

The CSS property to change the border of an element to HunterLab 79.7748, 2.6580, 9.0452 is called "border".

The border property can be set on classes, ids or directly on the HTML element.

This example shows the color as border, it can be applied via the CSS property "border" or "border-color".

```
.border, #border, table{ border:4px solid rgb(227, 204, 199) }
```


If only the border color should be changed use the property `border-color`.

```
.border{ border-color:rgb(227, 204, 199) }
```

If you want to add a box shadow in that color use:

Here you see how a box with a 4 pixel `rgb(227, 204, 199)` colored shadow looks like.

```
.boxshadow{ -moz-box-shadow:4px 4px 4px  
4px rgb(227, 204, 199); -webkit-box-  
shadow:4px 4px 4px 4px rgb(227, 204, 199);  
box-shadow:4px 4px 4px 4px rgb(227, 204,  
199) }
```

Background

The CSS property to change the background color of an element to HunterLab 79.7748, 2.6580, 9.0452 is called "background". The background property can be set on classes, ids or directly on the HTML element.

```
.background, #background, body{  
background: rgb(227, 204, 199) }
```

If only the background color should be changed can be used:

```
.background{ background-color: rgb(227,  
204, 199) }
```

This example shows the color as background, it is applied via the CSS property "background".

To optimize and compress your CSS code, you can use our [online CSS compressor and optimizer](#) based on csstidy. If you want to create a linear or radial gradient as background or border, check our [CSS Gradient Generator](#).

Hey! You found this booklet interesting? Support Converting Colors with the new Membership Option!

The pro membership hides all ads, plus gives you double the colors in the color bucket, and more awesome pro features!

[Learn more, Memberships starting at \\$2.50/m!](#)

**Follow me
on Twitter!**

@ConvertingColor