

Converting Colors

HunterLab(79.7667, 7.9364,
3.4775)

Have a look what the booklet for
HunterLab(79.7667, 7.9364, 3.4775)
contains.

| | |
|---|----|
| HunterLab(79.7698, 7.9185, 3.4866) | 3 |
| <i>Conversions</i> | 4 |
| <i>Details</i> | 6 |
| <i>Harmonies</i> | 12 |
| <i>Previews</i> | 24 |
| <i>Color Blindness Simulation</i> | 28 |
| <i>CSS Examples</i> | 31 |

Color

**HunterLab(79.7698, 7.9185,
3.4866)**

Conversions

Conversions Part 1

| Format | Color |
|-------------|---------------------------|
| Hex | E8C9D3 |
| RGB | 232, 201, 211 |
| RGB Percent | 91%, 79%, 83% |
| CMY | 0.0902, 0.2117, 0.1725 |
| CMYK | 0.00, 0.13, 0.09, 0.09 |
| HSL | 341°, 40%, 85% |
| HSV | 341°, 13%, 91% |
| XYZ | 65.9232, 63.6322, 70.4356 |
| YIQ | 211.4090, 15.2660, 9.6820 |

Conversions

Conversions Part 2

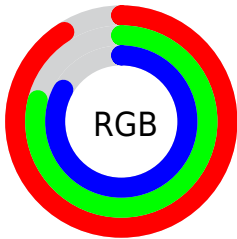
| Format | Color |
|-------------------------------------|-------------------------------|
| R _Y B | 232, 201, 211 |
| Decimal | 15256019 |
| CIE Lab | 83.78, 12.53, -0.95 |
| CIE LCh | 84, 12.565, 355.683 |
| Yxy | 63.6350, 0.3296, 0.3182 |
| Android (android.graphics.Color) | 4293446099 (0xFFE8C9D3) |
| YUV | 211.4090, -0.2016, 18.0583 |
| Hunter-Lab | 79.7698, 7.9185, 3.4866 |

Details

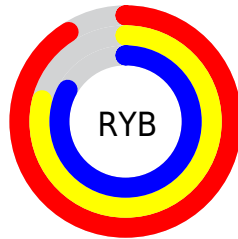
The HunterLab color $79.7698, 7.9185, 3.4866$ is a light color, and the websafe version is hex `FFCCCC`. A complement of this color would be $86.8368, -16.0263, 6.0406$, and the grayscale version is $80.8835, -4.3157, 4.3946$.

A 20% lighter version of the original color is $100.0000, -5.3358, 5.4332$, and $57.0367, 7.9179, 2.1259$ is the 20% darker color. If you saturate the color by 10%, you get $72.7133, 17.6934, 2.8799$, and if you desaturate by 10%, it is $87.2401, -1.6362, 4.4762$.

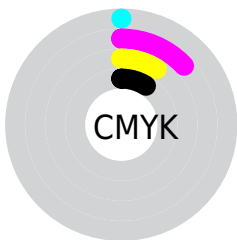
Distribution



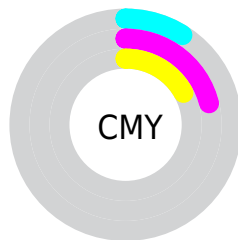
- Red (91%)
- Green (79%)
- Blue (83%)



- Red (91%)
- Yellow (79%)
- Blue (83%)



- Cyan (0%)
- Magenta (13%)
- Yellow (9%)
- Black (9%)



- Cyan (9%)
- Magenta (21%)
- Yellow (17%)

Brightness & Saturation Gradients

These gradients show how the HunterLab color 79.7698, 7.9185, 3.4866 changes by changing the brightness by 10 percent. The first figure shows a shift by +10% for each color and the second figure -10%.

Similar to the brightness gradients but the following saturation gradients show a change of the HunterLab color 79.7698, 7.9185, 3.4866 by changing the saturation by 10% instead.

79.7698, 7.9185,
3.4866

79.7698, 7.9185,
3.4866

209.2535, 5.3884,
10.2152

68.0846, 7.9512,
2.8953

104.9215, 7.6735,
4.7761

57.0317, 7.9211,
2.3395

118.3318, 7.4747,
5.4682

46.6516, 7.8181,
1.8234

132.2693, 7.2292,
6.1903

36.9910, 7.6325,
1.3499

146.7147, 6.9397,
6.9414

28.1083, 7.3510,
0.9234

161.6508, 6.6089,
7.7204

20.0787, 6.9553,
0.5491

177.0619, 6.2388,

13.0047, 6.4187,

8.5262

0.2352

192.9338, 5.8314,
9.3581

6.4650, 8.0998,
-0.2546

0.0000, NaN, NaN

79.7698, 7.9185,
3.4866

79.7698, 7.9185,
3.4866

72.7133, 17.6934,
2.8799

87.2401, -1.6362,
4.4762

66.1400, 27.6398,
2.7393

95.0595, -10.9555,
5.7733

60.1435, 37.6143,
3.1668

97.9265, -12.6258,
2.8402

54.8330, 47.3381,
4.2648

■ 50.3299, 56.3437,
6.1098

■ 46.7516, 63.9725,
8.7053

■ 44.1817, 69.4976,
11.9284

■ 42.6252, 72.4157,
15.5049

■ 42.0256, 73.1730,
17.8318

Harmonies

Analogous

The Analogous color harmony consists of three colors that are next to each other on the color wheel.



79.7716, 5.7753, -2.2854



79.7698, 7.9185, 3.4866



79.7716, 6.7139, 9.0796

Triad

The Triadic color harmony groups three colors that are evenly spaced from another and form a triangle on the color wheel.



79.7716, 7.9162, 3.4880



79.7716, -9.3369, 13.8572



79.7716, -10.8390, -5.5516

Complementary

The Complementary color scheme is a pair of colors which are on the opposite of each other on the color wheel.



79.7698, 7.9185, 3.4866



86.8368, -16.0263, 6.0406

Split Complementary

Split-complementary colors differ from the complementary color scheme. The scheme consists of three colors, the original color and two neighbors of the complement color.



79.7716, -14.6723, -0.7048



79.7698, 7.9185, 3.4866



79.7716, -13.8238, 10.4458

Square

The Square scheme is like the rectangle color scheme, but the four colors are evenly spaced on the color wheel.



79.7716, 7.9162, 3.4880



79.7716, -3.3657, 14.7950



79.7716, -15.7483, 5.1870



79.7716, -5.1518, -7.7498

Rectangle

The Rectangle color scheme consists of four colors that form a rectangle on the color wheel.



79.7698, 7.9185, 3.4866



79.7716, 4.1972, 12.0015



79.7716, -15.7483, 5.1870



79.7716, -12.3802, -4.1610

Sweetspot

The Sweet Spot groups the original color and five complimentary colors.



79.7716, 7.9162, 3.4880



96.5540, -1.1271, 4.8989



79.4226, 8.1671, -7.9096



44.3737, -0.1531, 2.2228

0.0000, NaN, NaN



46.2646, -2.4686, 2.5136

Same Dimension

The Same Dimension uses a secret algorithm to generate beautiful new colors.



79.7716, 7.9162, 3.4880



86.6142, 11.7521, 3.6529



80.9929, 3.5763, 9.5163



38.0056, 1.9096, 1.7628



31.3453, 54.6403, 12.8091



8.6172, 15.2071, 2.0815

Inverse Universe

The Inverse Universe completely reimagines the original color for something new.



79.7716, 7.9162, 3.4880



86.6142, 11.7521, 3.6529



85.4942, -11.6521, -0.4678



38.0056, 1.9096, 1.7628



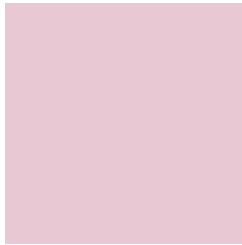
31.3453, 54.6403, 12.8091



8.6172, 15.2071, 2.0815

Previews

White Background



This preview shows how the HunterLab color 79.7698, 7.9185, 3.4866 looks on a white background.

Color Contrast Check

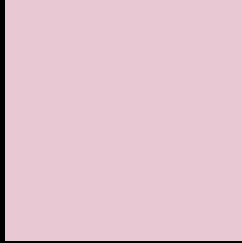
Large Text (above 18pt) WCAG AA × Fail

Any Text WCAG AA × Fail

Large Text (above 18pt) WCAG AAA × Fail

Any Text WCAG AAA × Fail

Black Background



This preview shows how the HunterLab color 79.7698, 7.9185, 3.4866 looks on a black background.

Color Contrast Check

Large Text (above 18pt) WCAG AA ✓ Pass

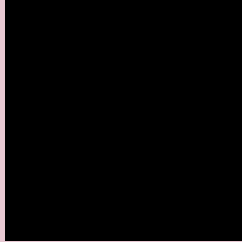
Any Text WCAG AA ✓ Pass

Large Text (above 18pt) WCAG AAA ✓ Pass

Any Text WCAG AAA ✓ Pass

If you want to check with other color combinations, try the [Color Contrast Checker](#).

HunterLab 79.7698, 7.9185, 3.4866 Background



This preview shows how black text looks on a background with the HunterLab color 79.7698, 7.9185, 3.4866.



This preview shows how white text looks on a background with the HunterLab color 79.7698, 7.9185,

3.4866.

Color Blindness Simulation

Color vision deficiency is a very complex topic, and I could not describe the different causes any better than Wikipedia does, so if you want to learn more, you should check out their [article about color blindness](#).

Dichromacy



Original Color

79.7698, 7.9185, 3.4866

Protanopia

79.9168, -2.0751, 1.5115

Deuteranopia

79.6481, 6.0039, 3.3080



Tritanopia

79.7434, 9.6477, 1.0037

Trichromacy



Original Color

79.7698, 7.9185, 3.4866

Protanomaly

79.7357, 1.9056, 1.8607

Deuteranomaly

79.7510, 6.3484, 3.4367

Tritanomaly

79.6789, 9.3054, 1.9215

Monochromacy



Original Color

79.7698, 7.9185, 3.4866

Achromatopsia

80.7097, -4.3065, 4.3851

Achromatomaly

80.2427, 0.3510, 3.9154

CSS Examples

Text

The CSS property to change the color of the text to HunterLab 79.7698, 7.9185, 3.4866 is called "color". The color property can be set on classes, ids or directly on the HTML element.

This example shows how text in the color `rgb(232, 201, 211)` looks like.

```
.text, #text, p{  
    color:rgb(232, 201, 211)  
}
```

If you want to add a text shadow in that color use the text-shadow property, you can generate a text shadow directly with our [CSS Text Shadow Generator](#).

Here you see how black text with a 4 pixel rgb(232, 201, 211) colored shadow looks like.

```
.shadow{ text-shadow: 4px 4px 2px rgb(232, 201, 211) }
```

Border

The CSS property to change the border of an element to HunterLab 79.7698, 7.9185, 3.4866 is called "border". The border property can be set on classes, ids or directly on the HTML element.

This example shows the color as border, it can be applied via the CSS property "border" or "border-color".

```
.border, #border, table{ border:4px solid rgb(232, 201, 211) }
```


If only the border color should be changed use the property `border-color`.

```
.border{ border-color:rgb(232, 201, 211) }
```

If you want to add a box shadow in that color use:

Here you see how a box with a 4 pixel `rgb(232, 201, 211)` colored shadow looks like.

```
.boxshadow{ -moz-box-shadow:4px 4px 4px  
4px rgb(232, 201, 211); -webkit-box-  
shadow:4px 4px 4px 4px rgb(232, 201, 211);  
box-shadow:4px 4px 4px 4px rgb(232, 201,  
211) }
```

Background

The CSS property to change the background color of an element to HunterLab 79.7698, 7.9185, 3.4866 is called "background". The background property can be set on classes, ids or directly on the HTML element.

```
.background, #background, body{  
background: rgb(232, 201, 211) }
```

If only the background color should be changed can be used:

```
.background{ background-color: rgb(232,  
201, 211) }
```

This example shows the color as background, it is applied via the CSS property "background".

To optimize and compress your CSS code, you can use our [online CSS compressor and optimizer](#) based on csstidy. If you want to create a linear or radial gradient as background or border, check our [CSS Gradient Generator](#).

Hey! You found this booklet interesting? Support Converting Colors with the new Membership Option!

The pro membership hides all ads, plus gives you double the colors in the color bucket, and more awesome pro features!

[Learn more, Memberships starting at \\$2.50/m!](#)

**Follow me
on Twitter!**

@ConvertingColor